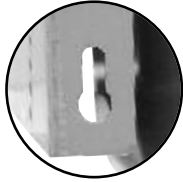


Keyhole Bracket for  
easier installation  
and greater stability.



**7-PS-22**

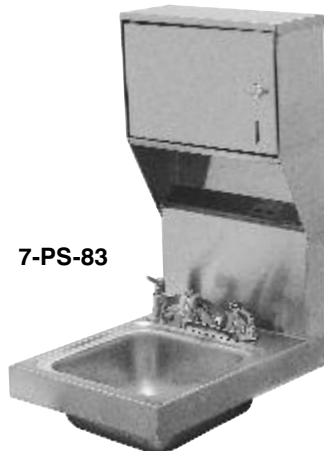


**7-PS-23**

**WITH SOAP & TOWEL DISPENSERS**



**7-PS-84**



**7-PS-83**

**Item #:** \_\_\_\_\_ **Qty #:** \_\_\_\_\_

**Model #:** \_\_\_\_\_

**Project #:** \_\_\_\_\_

**FEATURES:**

One piece **Deep Drawn** sink bowl design.

Sink bowl is 9" x 9" x 5".

All sink bowls have a large liberal radii with a minimum dimension of 1" and are square in design.

Keyhole wall mount bracket.

1 1/2" stainless steel drain with strainer plate.

**Specific Features:**

**7-PS-22** and **7-PS-83** 4" O.C. centerset faucet furnished with aerator.

**7-PS-23** and **7-PS-84** 4" O.C. splash mounted gooseneck faucet furnished with aerator.

**7-PS-83** and **7-PS-84** liquid soap & towel dispenser with hinged towel box. Unit uses standard C-fold towels.

**CONSTRUCTION:**

All TIG welded.

Welded areas blended to match adjacent surfaces and to a satin finish.

Die formed Countertop Edge with a No-Drip offset.

One sheet of stainless steel - No Seams.

**MATERIAL:**

Heavy gauge type 304 series stainless steel.

Wall mounting bracket is stainless steel and of offset design.

All fittings are brass / chrome plated unless otherwise indicated.

**MECHANICAL:**

Faucet supply is 1/2" IPS male thread hot and cold.

**FOR REPLACEMENT FAUCET, DRAINS  
AND ACCESSORIES  
SEE PAGE B-13 & SECTION G**

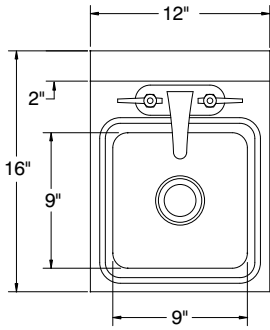
# DIMENSIONS and SPECIFICATIONS

TOL Overall:  $\pm .500$ " Interior:  $\pm .250$ "

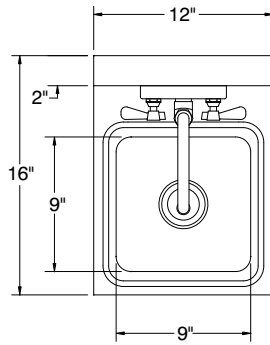
FITTINGS SUPPLIED AS SHOWN

ALL DIMENSIONS ARE TYPICAL

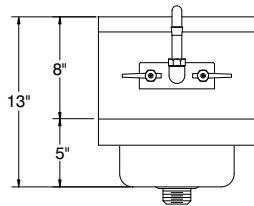
TOP VIEW FOR 7-PS-22



TOP VIEW FOR 7-PS-23

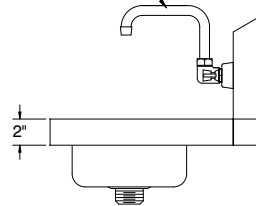


7-PS-23

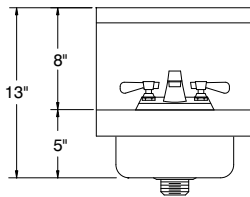


12 lbs.

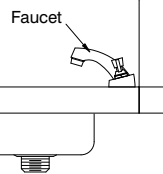
"D" Spout Faucet



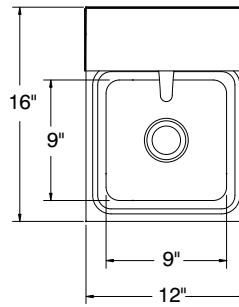
7-PS-22



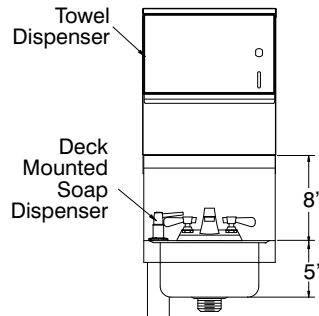
12 lbs.



TOP VIEW FOR 7-PS-83

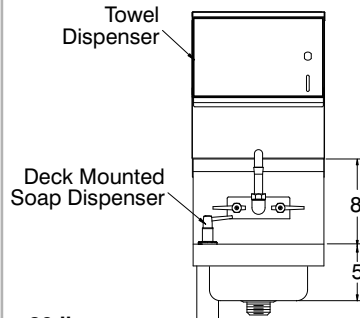


7-PS-83



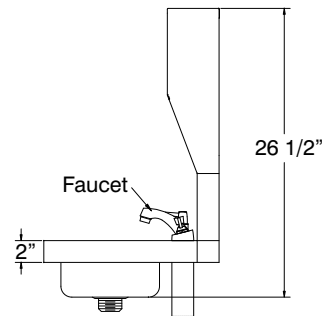
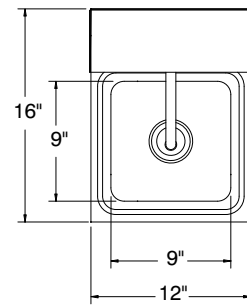
20 lbs.

7-PS-84



20 lbs.

TOP VIEW FOR 7-PS-84



## SUGGESTED PLUMBING

