



Model RVW40

ASME HOT WATER SAFETY RELIEF VALVE

(10410 Series)

Job Name:	Contractor:
Job Location:	P.O. Number:
Engineer:	Representative:
Tag:	Wholesale Distributor:

DESCRIPTION

ASME Section IV capacity certified bronze safety relief valve for protection of hot water heating boilers, systems and similar equipment. It can be Pre-set to any pressure ranging between 20 to 80 psig (1.4 to 5.5 bar) at 250°F (121°C) max.

FEATURES

- ASME Section IV Certified Capacity
- Corrosion Resistant Construction
- Male or Female NPT inlet,
- Optional Polished or Satin Chrome Finish
- MADE IN THE USA

MATERIALS

Body: ASTM B584 Bronze
 Spring: Stainless Steel
 Seat: Silicone

CAPACITY

Set Pressure PSIG (bar)	Capacity BTU/Hr
20 (1.38)	377,000
25 (1.72)	427,000
30 (2.07)	477,000
35 (2.41)	532,000
40 (2.76)	587,000
45 (3.10)	642,000
50 (3.45)	697,000
55 (3.79)	752,000
60 (4.14)	807,000
65 (4.48)	862,000
70 (4.83)	917,000
75 (5.17)	972,000
80 (5.52)	1,027,000

APPROVALS



ASME Section IV Heating Boilers
 Canadian Registration Number 0G8547.5C

Conbraco Industries, Inc. 701 Matthews Mint Hill Rd. Matthews NC 28105 USA ; www.Apollovalves.com ; 704-841-6000



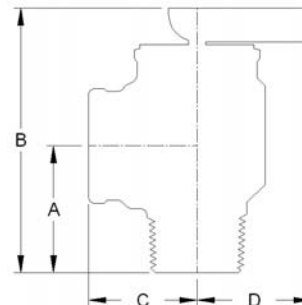
OPTIONS

- 3/4" Male NPT 3/4" Female NPT
- B = Brass finish
- P = Polished chrome finish
- S = Satin chrome finish
- Set pressure (20-80 psig)

DIMENSIONS

Model	Series	Size	A	B	C	D
RVW40	10417	3/4M	1.39 (35)	2.90 (74)	1.19 (30)	1.25 (32)
RVW40F	10418	3/4F	1.23 (31)	2.74 (70)	1.19 (30)	1.25 (32)

All dims in inches (mm)



This specification is provided for reference only. Conbraco reserves the right to change any portion of this specification without notice and without incurring obligation to make such changes to Conbraco products previously or subsequently sold.