



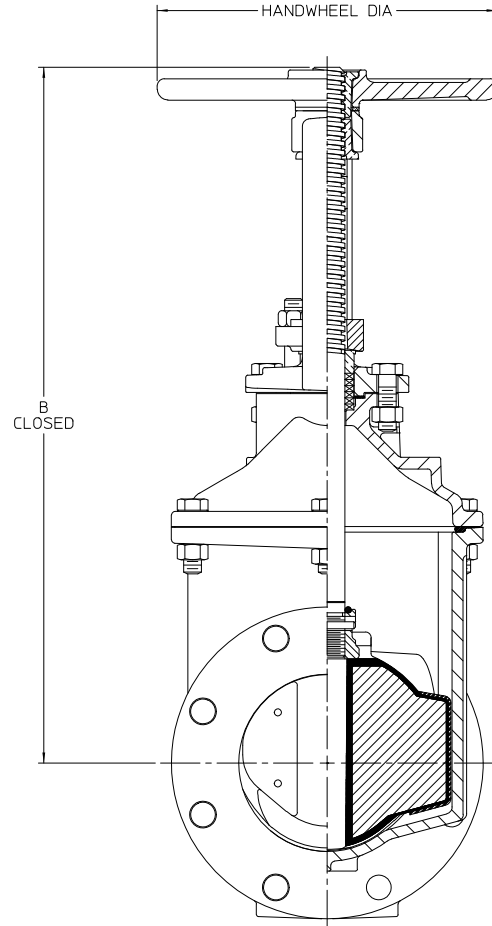
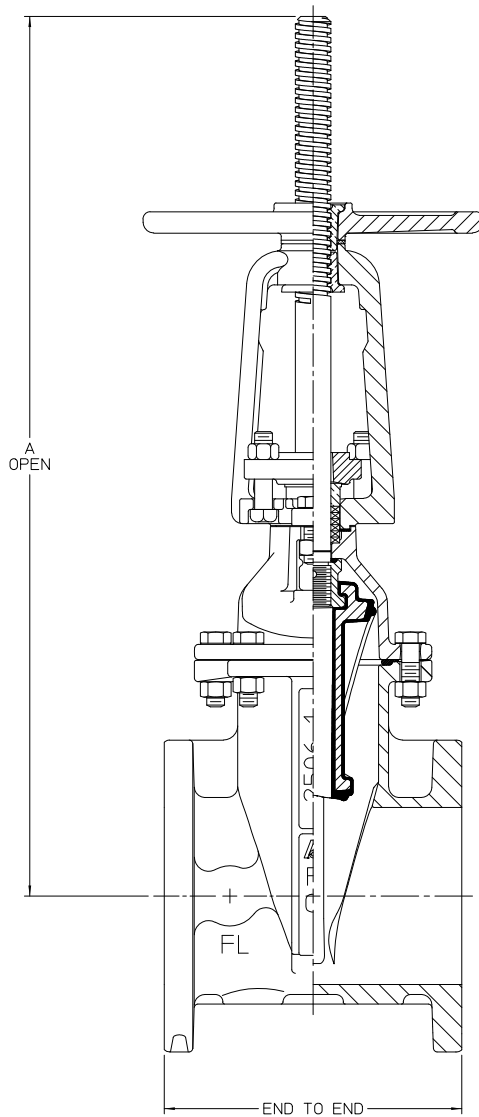
## 2500 SPECIFICATIONS

Valves 2 in.—66in. shall be resilient wedge type rated for 250 psig cold water working pressure. All ferrous components shall be ductile iron. All NRS valves, in applicable configurations, 2-1/2in.—24in. in diameter shall be Listed by Underwriters Laboratories, Inc. All OS&Y valves in applicable configurations, 3in.—24in. in diameter shall be Listed by Underwriters Laboratories, Inc. Valves 3 in.—54 in. shall be in full compliance with ANSI/AWWA C515. The words "DI" or "Ductile Iron" shall be cast on the valve. The wedge shall be ductile iron encapsulated with EPDM rubber and provided with male type guides and polymer guide covers. Bolting shall be Type 304 stainless steel and shall be provided with hexagonal heads with dimensions conforming to ANSI B18.2.1. Metric size, socket head cap screws therefore are not allowed.

- Operating nut shall be constructed of ductile iron and shall have four flats at stem connection to assure even input torque to the stem.
- All gaskets shall be pressure energized O-rings.
- Stem shall be sealed by three O-rings. The top two O-rings shall be replaceable with valve fully open and while subject to full rated working pressure. O-rings set in a cartridge shall not be allowed.
- Valve shall have thrust washers located with (1) above and (1) below the thrust collar to assure trouble-free operation of the valve.
- All internal and external surfaces of the valve body and bonnet shall have a fusion-bonded epoxy coating, complying with ANSI/AWWA C550, applied electrostatically prior to assembly.
- Valves shall be certified to NSF/ANSI Standard 61 and NSF/ANSI 372.
- Valves shall be AMERICAN Flow Control's **Series 2500 or 2500-1 Resilient Wedge Gate Valve**.

# AMERICAN Flow Control Submittal Information

## 4" - 12" SERIES 2500-1 RESILIENT WEDGE GATE VALVE, OS&Y



SK20041102-1

DIMENSION	VALVE SIZE				
	4"	6"	8"	10"	12"
A (Valve Open) $\pm 1/4$	23.47	30.97	38.16	48.41	53.28
B (Valve Closed) $\pm 1/4$	19.12	24.59	29.91	38.16	41.41
Handwheel Diameter	10.00	12.00	14.00	16.00	16.00
End to End	9.00	10.50	11.50	13.00	14.00
No. of Turns to Open	14	20	25	31	38



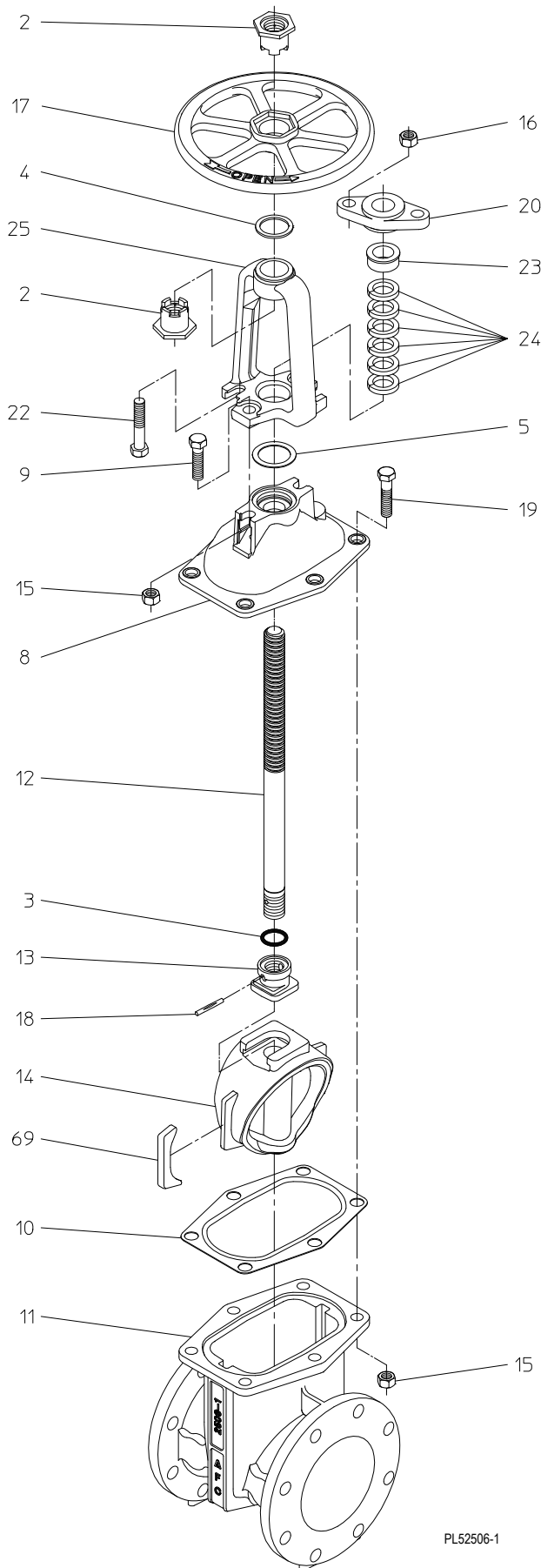
**AMERICAN**  
FLOW CONTROL

**THE RIGHT WAY**

AMERICAN Flow Control  
P.O. Box 2727  
Birmingham, Al. 35202-2727  
Phone: 1-800-326-8051  
Fax: 1-800-610-3569  
E-mail: [afcsales@american-usa.com](mailto:afcsales@american-usa.com)

Waterous Company  
125 Hardman Avenue South  
South St. Paul, Mn. 55075-1191  
Phone: 1-888-266-3686  
Fax: 1-800-601-2809  
E-mail: [afcsales@american-usa.com](mailto:afcsales@american-usa.com)

[WWW.AMERICAN-USA.COM](http://WWW.AMERICAN-USA.COM)



REF NO.	DESCRIPTION	MATERIAL
2	Stem Nut	Forging Brass, ASTM B124, UNS C37700
3	O-Ring	Rubber
4	Handwheel Washer	Brass, ASTM B36, UNS C26000
5	Stuffing Box Gasket	Rubber
8	Bonnet	Ductile Iron, ASTM A536
9	Hex Head Bolt, 5/8-11 x 2"	304 Stainless Steel
10	Bonnet Gasket	Rubber
11	Body	Ductile Iron, ASTM A536
12	Stem	Free Cutting Brass, ASTM B16, UNS C36000
13	Wedge Nut	Ductile Iron, ASTM A536
14	Resilient Wedge	EPDM Rubber Encapsulated Ductile Iron ASTM A536
15	Hex Nut, 5/8-11	304 Stainless Steel
16	Hex Nut, 5/8-11	Brass, ASTM F467, UNS C27000
17	Handwheel	Ductile Iron, ASTM A536
18	Groove Pin	303 Stainless Steel
19	Hex Head Bolt, 5/8-11 x 2-1/4"	304 Stainless Steel
20	Gland Follower	Ductile Iron, ASTM A536
22	Hex Head Bolt, 5/8-11 x 2-3/4"	304 Stainless Steel
23	Gland	Sintered Bronze, Oil Impregnated, ASTM B438, Group 1, Type II
24	Packing Ring	PTFE Impregnated Braided Graphite
25	Yoke	Ductile Iron, ASTM A536
69	Wedge Cover	Acetal Polymer

#### OPTIONAL MATERIALS ARE AS FOLLOWS

BOLTS and NUTS: 316 Stainless Steel

STEM: Cast NDZ-S Bronze, ASTM B763, UNS C99500

STEM: Stainless Steel

Open Direction: ☐ Left (C.C.W.) ☐ Right (C.W.)

#### NOTES:

1. Available in configurations that are UL Listed and FM Approved with 250 psig rated working pressure.
2. Meets requirements of ANSI/AWWA C515 with 250 psig rated working pressure.
3. Fusion-bonded epoxy-coated in accordance with ANSI/AWWA C550.
4. Certified to NSF/ANSI 61 & 372.



**AMERICAN**  
FLOW CONTROL

**THE RIGHT WAY**

AMERICAN Flow Control  
P.O. Box 2727  
Birmingham, Al. 35202-2727  
Phone: 1-800-326-8051  
Fax: 1-800-610-3569  
E-mail: [afcsales@american-usa.com](mailto:afcsales@american-usa.com)

Waterous Company  
125 Hardman Avenue South  
South St. Paul, Mn. 55075-1191  
Phone: 1-888-266-3686  
Fax: 1-800-601-2809  
E-mail: [afcsales@american-usa.com](mailto:afcsales@american-usa.com)

[WWW.AMERICAN-USA.COM](http://WWW.AMERICAN-USA.COM)

Construction shown is typical of the 6-inch size with flanged end connections and is illustrative only. Construction of other sizes and end connection types vary slightly. See elsewhere on this submittal for specific details.

PL52506-1