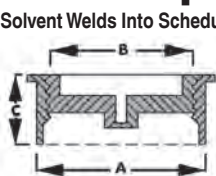


Internal Pipe Cleanout

Solvent Welds Into Schedule 40 DWV Pipe



MADE IN THE USA

- Allows pipe to be cut flush with floor or wall
- Countersunk plug included

A	B	C
Inside 2"	1-1/2"	1"
Inside 3"	2-1/2"	1-1/8"
Inside 4"	3-1/2"	1-1/4"

PVC

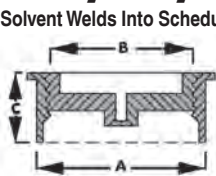
PART NO.	PIPE SIZE	PLUG SIZE	OD	CTN QTY
C60106	2"	1-1/2" IPS	1-7/8"	10
C60007	3"	2-1/2" IPS	2-13/16"	10
C60008	4"	3-1/2" IPS	4"	50
C60116	2"	1-1/2" with insert	—	10
C60117	3"	2-1/2" with insert	—	10
C60118	4"	3-1/2" with insert	—	10

ABS

PART NO.	PIPE SIZE	PLUG SIZE	OD	CTN QTY
C60107	2"	1-1/2" IPS	1-7/8"	10
C60011	3"	2-1/2" IPS	2-13/16"	10
C60012	4"	3-1/2" IPS	4"	10

Heavy Duty Internal Pipe Cleanout

Solvent Welds Into Schedule 40 DWV Pipe



MADE IN THE USA

- Allows pipe to be cut flush with floor or wall
- Countersunk plug included

A	B	C
Inside 3"	2-1/4"	1-7/8"
Inside 4"	3-1/2"	2"

PVC

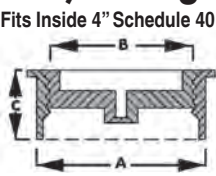
PART NO.	SIZE	PLUG SIZE	CTN QTY
C60207	3"	2" IPS	10
C60108	4"	3" IPS	10

ABS

PART NO.	SIZE	PLUG SIZE	CTN QTY
C60211	3"	2" IPS	10
C60112	4"	3" IPS	10

Hub/Fitting Cleanouts

Fits Inside 4" Schedule 40 DWV Fittings



MADE IN THE USA

- 3-1/2" IPS countersunk plug
- Solvent welds into 4" fitting hubs

A	B	C
4-1/2"	3-7/8"	2-3/16"

PVC

PART NO.	DESCRIPTION	CTN QTY
C60009	4"	10

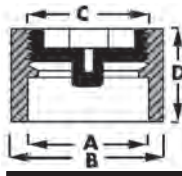
ABS

PART NO.	DESCRIPTION	CTN QTY
C60010	4"	10

Fit-Flush Cleanout

2" x 3" Fits Over 2" or Inside 3" Schedule 40 DWV Pipe
3" x 4" Fits Over 3" or Inside 4" Schedule 40 DWV Pipe

MADE IN THE USA



- Built-in stop
- Fits flush everytime

A	B	C	D
Over 2"	Inside 3"	2"	2"
Over 3"	Inside 4"	3"	2-1/2"

PVC

PART NO.	SIZE	PLUG SIZE	OD	CTN QTY
C61023	2" x 3"	2" IPS	2-3/8"	1
C61034	3" x 4"	3" IPS	3-1/2"	1
C61223	2" x 3"	2" IPS brass	2-3/8"	1
C61234	3" x 4"	3" IPS brass	3-1/2"	1
C61432	2" x 3"	2" with insert	2-3/8"	1
C61434	3" x 4"	3" with insert	3-1/2"	1

ABS

PART NO.	SIZE	PLUG SIZE	OD	CTN QTY
C61123	2" x 3"	2" IPS	2-3/8"	1
C61134	3" x 4"	3" IPS	3-1/2"	1

Countersunk Cleanout Plugs w/Insert



- White plastic
- With threaded brass insert for cleanout covers

MADE IN THE USA

PART NO.	DESCRIPTION	CTN QTY
P49915	1-1/2"	25
P49920	2"	25
P49925	2-1/2"	25
P49930	3"	25
P49935	3-1/2"	25
P49940	4"	25

Raised Head Cleanout Plugs



- White plastic

MADE IN THE USA

PART NO.	DESCRIPTION	CTN QTY
P49150	1-1/2"	50
P49200	2"	50
P49250	2-1/2"	25
P49350	3-1/2"	25
P49400	4"	10
P49600	6"	10

Countersunk Cleanout Plugs



- White plastic

MADE IN THE USA

PART NO.	DESCRIPTION	CTN QTY
P49015	1-1/2"	25
P49002	2"	25
P49025	2-1/2"	25
P49003	3"	25
P49035	3-1/2"	25
P49004	4"	25