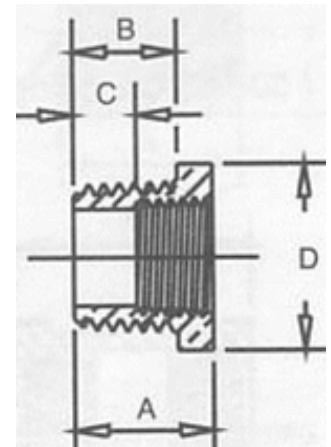


DIMENSIONAL SPECIFICATIONS

LEADED DOMESTIC BRASS FITTINGS** 125 LB.

HEX BUSHING CONTINUED

Part #	Size (IN.)	Approx. Net WT. (LB.)	A	B	C	D
114-2412	1-1/2 X 3/4	0.50	1.20	0.83	0.70	1.63
114-2416	1-1/2 X 1	0.45	1.14	0.83	0.56	2.00
114-2420	1-1/2 X 1-1/4	0.35	1.14	0.83	0.43	2.00
114-3204	2 X 1/4	1.10	1.25	0.25	0.73	2.38
114-3208	2 X 1/2	1.00	1.31	0.88	0.88	1.34
114-3212	2 X 3/4	0.95	1.31	0.88	0.81	1.63
114-3216	2 X 1	0.77	1.36	0.91	0.78	1.96
114-3220	2 X 1-1/4	0.75	1.22	0.88	0.55	2.50
114-3224	2 X 1-1/2	0.65	1.22	0.88	0.52	2.50
114-4016	2-1/2 X 1	1.45	1.53	1.09	0.94	1.97
114-4020	2-1/2 X 1-1/4	1.10	1.53	1.09	0.84	2.97
114-4032	2-1/2 X 2	1.15	1.44	1.07	0.69	2.41
114-4816	3 X 1	1.95	1.63	1.13	1.03	3.50
114-4820	3 X 1-1/4	1.75	1.63	1.13	0.94	3.50
114-4824	3 X 1-1/2	1.55	1.63	1.13	0.91	3.50
114-4832	3 X 2	1.65	1.61	1.13	0.86	3.50
114-4840	3 X 2-1/2	1.80	1.53	1.13	0.61	3.88



**⚠️WARNING: This product can expose you to Lead, which is known to the State of California to cause cancer and birth defects or other reproductive harm. For more information go to www.P65Warnings.ca.gov. Leaded product is not for use in potable water.

**MERIT
BRASS**

DIRECTING THE FLOW OF *Quality*