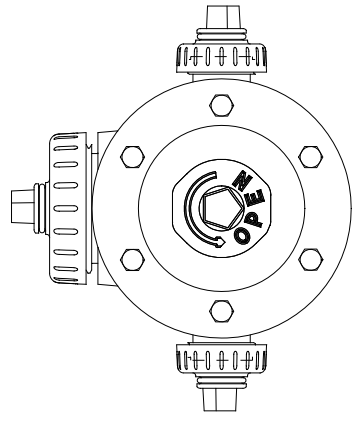
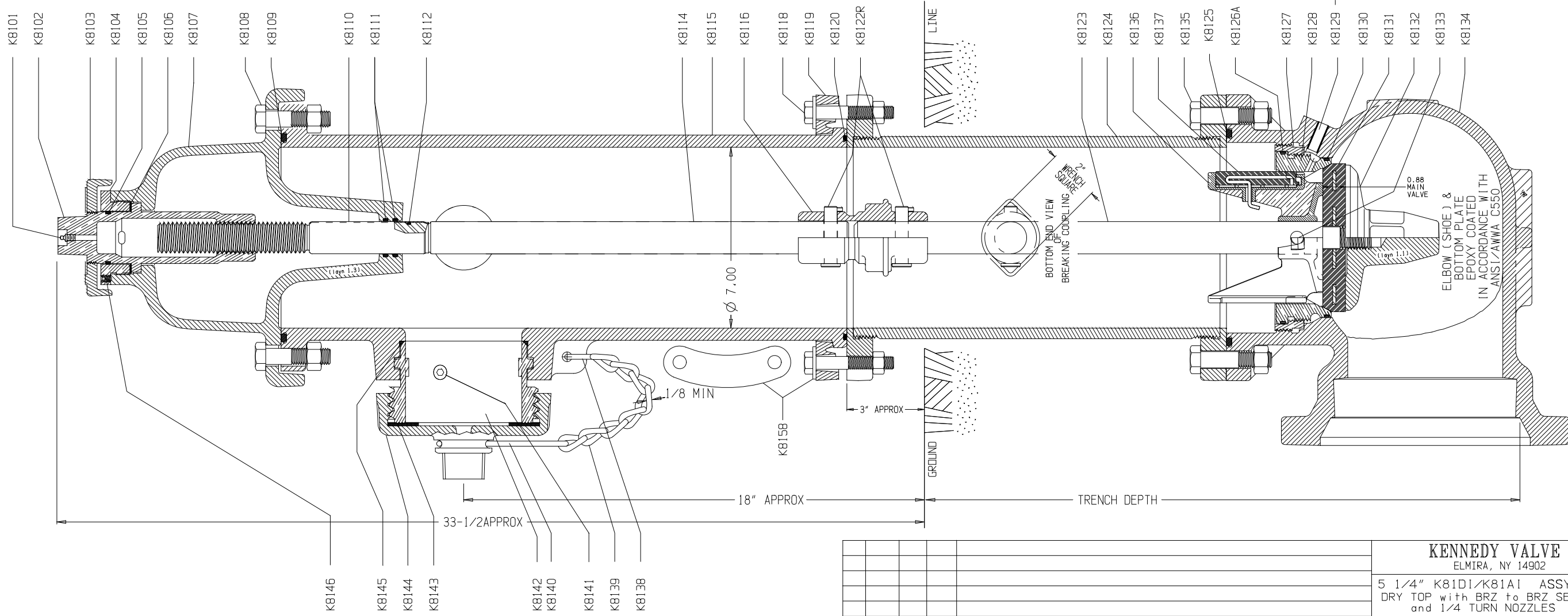


# AWWA GUARDIAN HYDRANT

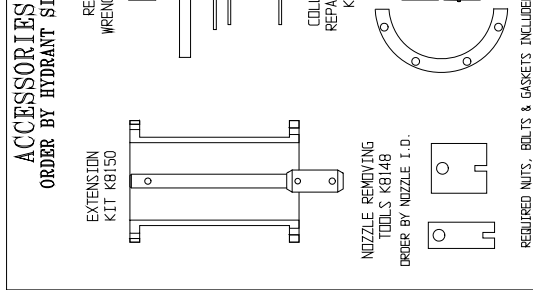
## KENNEDY VALVE

Division of McWane, Inc

### HYDRANT MEETS or EXCEEDS the REQUIREMENTS of AWWA C-502



TWO HOSE & ONE STEAMER SHOWN,  
TWO HOSE at 90 deg and OTHER CONFIGURATIONS AVAILABLE



#### ACCESSORIES

ORDER BY HYDRANT SIZE

SEAT

REMOVING

WRENCH K8147

STEM

NUT

COLLISION

REPAIR KIT

K8149

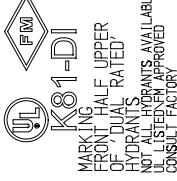
NOZZLE REMOVING  
TOOLS: K8146  
ORDER BY NOZZLE I.D.

#### PARTS LIST

REQUIRED NUTS, BOLTS & GASKETS INCLUDED WITH KIT

DETAIL	PART	MATERIAL	ASTM SPEC (or as noted)
K8101	ALEMITE FITTING	STAINLESS STEEL	A276 (.304)
† K8102	OPERATING STEM NUT	BRONZE	B594 C87850
K8103	DIRT SHIELD	CAST IRON	A126 CLASS B
K8104	STEM LOCK NUT	BRONZE	B594 C87850
† K8105	O-RING	VITON	D2000
† K8106	THRUST WASHER	NYLON IRON GS	MIL LP-410
K8107	HYDRANT CAP	DUCTILE IRON	A536 GRADE 70-50-5
K8108	CAP BOLTS & NUTS	STEEL (ZINC PLATED)	A 307, SAE GRADE 2
† K8109	CAP SEAL	RUBBER	D2000
† K8110	STEM FERRULE	BRASS	B135 C26000
† K8111	O-RING	BUNA-N (SYN. RUBBER)	D2000
† K8112	O-RING	BUNA-N (SYN. RUBBER)	D2000
K8114	UPPER STEM	COLD DRAWN STEEL	A108 C1018/C1020
K8115	UPPER BARREL	DUCTILE IRON	A536 GRADE 70-50-5
K8116	STEM BREAKING COUPLING	CAST IRON	A126 CLASS B
K8118	BOLTS & NUTS	STEEL (ZINC PLATED)	A 307, SAE GRADE 2
K8119	BREAKING RING	DUCTILE IRON	A536 GRADE 70-50-5
K8120	O-RING	BUNA-N (SYN. RUBBER)	D2000
K8122R	COUPLING PINS	STAINLESS STEEL	302HQ
K8123	LOWER STEM	COLD DRAWN STEEL	A108 C1018/C1020
K8124	LOWER BARREL	DUCTILE IRON	ANSI/AWA C151/A21.51
† K8125	ELBOW SEAL	RUBBER	D2000
† K8126A	O-RING	BUNA-N (SYN. RUBBER)	D2000
† K8127	SEAT RING INSERT	BRONZE	B806 C95400 or B594 C89833
† K8128	SEAT RING	BRASS	B135 C23000
† K8130	O-RING	BUNA-N (SYN. RUBBER)	D2000
† K8131	MAIN VALVE	E.P.D.M. STEEL INSERT	D2000
K8132	BOTTOM PLATE	CAST IRON	A126 CLASS B
K8133	DRAIN VALVE PIN	STAINLESS STEEL	A102/A16
K8134	ELBOW	DUCTILE IRON	A536 GRADE 70-50-5
† K8135	ELBOW BOLTS AND NUTS	18-8 STAINLESS STEEL	F593C/F594
† K8136	DRAIN VALVE	ALUMINUM BRONZE	B806 C95400/C95500
K8137	DRAIN VALVE FACING w/INSERT	EPDM, SBR, or BUNA-N w/SST	D2000/A276 (.304)
K8138	NOZZLE CHAIN "S" HOOK	ZINC PLATED STEEL	A108
† K8139	NOZZLE CAP CHAIN W/3 BANDS	BRONZE	B806 C95400 or B594 C89833
† K8140	HOSE NOZZLE	STAINLESS STEEL	A276 (.304)
† K8141	NOZZLE RETAINING SCREW	NEOPRENE	D 2000
† K8142	NOZZLE	CAST IRON	A126 CLASS B
† K8143	NOZZLE CAP GASKET	BUNA-N (SYN. RUBBER)	D2000
† K8144	NOZZLE CAP	CAST IRON	A126 CLASS B
† K8145	O-RING	BUNA-N (SYN. RUBBER)	D2000
† K8146	ALLEN HEAD SET SCREW	STAINLESS STEEL	A276 (.410)
† K8147	SEAT REMOVAL WRENCH	STEEL	
† K8148	NOZZLE REMOVAL TOOLS		
† K8149	COLLISION REPAIR KIT		
K8150	GRADE-EXTENSION KIT		
K8158	BREAKER RING STRAP		

\* Denotes that part is available only as part of an assembly.  
# Must specify type of Nozzle, Hose or Steamer.  
† Recommended spare parts.



NOZZLE ARRANGEMENTS  
2 HOSE & 1 STEAMER  
2 HOSE at 90°  
2 STEAMERS at 90°  
4 HOSE at 90°



20 16  
CURRENT YEAR  
ON FRONT



KENNEDY  
ELMIRA, NY  
AWWA  
K81-AJ

MARKING  
FRONT HALF UPPER  
OF AWWA ONLY  
HYDRANTS

MARKING  
BACK HALF ALL UPERS  
HYDRANTS

The GUARDIAN Hydrant meets or exceeds  
all requirements of AWWA C-502.

(2) DRAIN HOLES

(1) SHOWN ROTATED 90°

#### SPECIFICATIONS

CUSTOMER: GENERIC

Spec: -----

No TURNS/DIRECTION OPEN: 15 1/2-OPEN LEFT

CAP & OPERATING NUT SHAPE - SIZE: 1-1/2" PENTAGON

HOSE NOZZLE THUS: TWO - 2 1/2" NST (Ref NFPA No 1963)

STEAMER NOZZLE THUS: 4-1/2" NST (Ref NFPA No 1963)

TRENCH DEPTH: PER ORDER

SIZE & TYPE of PIPE CONN. to MAIN: PER ORDER

PAINT: PER ORDER

OTHER: -----

-----

-----

-----

-----

-----

-----

-----

KENNEDY VALVE  
ELMIRA, NY 14902

5 1/4" K81DI/K81AI ASSY DWG  
DRY TOP with BRZ to BRZ SEAT  
and 1/4 TURN NOZZLES  
- 3 Way Upper

CUSTOMER: GENERIC

DRAWN BY: JPF  
DWG NO: 81754

SCALE: NONE FILE PATH: DRAFT\HYD Revision 01

NO	Date	INIT	ECN	REVISION
01	5/16	SJH	2951	RELEASED FOR PRODUCTION

5 1/4" MVO

Drain holes are shown rotated 90° for clarity.

6" MECHANICAL JOINT ELBOW SHOWN IN  
DUCTILE IRON, ASTM A536 70-50-5, AVAILABLE  
PAINTED ELBOWS & PLATE TO A126 CLASS B MAT'L.  
BUT IN GRAY IRON, ASTM A126 CLASS B MAT'L.