

150# Malleable Fittings • Spec Sheet

CHINESE

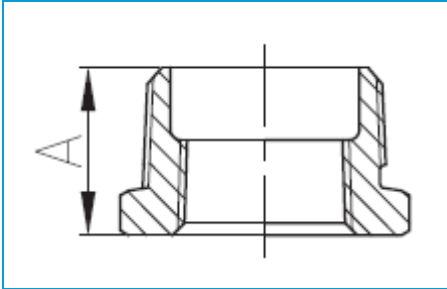


- Black & Galvanized
- Material: ASTM A197/A197M
- Dimensions:
 - ASME B16.3 covering 90° Elbows, 45° Elbows, Couplings, Reducers, 90° Street Elbows, 45° Street Elbows, Caps, Tees
 - ASME B16.39 covering Unions
 - ASME B16.14 covering Bushings, Plugs
- Threads: ASME B1.201
- Available: 1/8" through 6"
- Approvals: UL & FM approved

150# Malleable Fittings • Spec Sheet

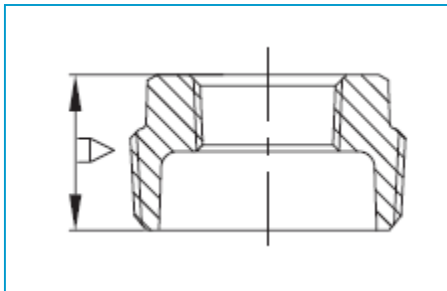
CHINESE

Outside Hex Bushing



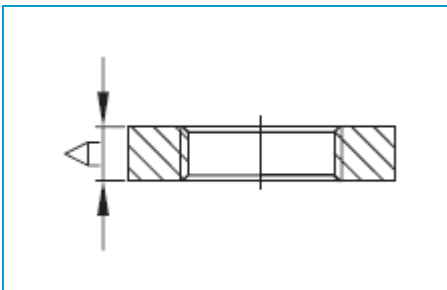
Size	1/4x1/8	3/8x1/8	3/8x1/4	1/2x1/8	1/2x1/4	1/2x3/8	3/4x1/8
A	0.58	0.64	0.64	0.75	0.75	0.75	0.85
Size	3/4x1/4	3/4x3/8	3/4x1/2	1x1/2	1x3/4	1-1/4x3/4	1-1/4x1
A	0.85	0.85	0.85	1.00	1.00	1.08	1.08
Size	1-1/2x1	1-1/2x1-1/4	2x1-1/4	2x1-1/2	2-1/2x1-1/2	2-1/2x2	
A	1.14	1.14	1.22	1.22	1.51	1.44	
Size	3x2	3x2-1/2	4x3	5x4	6x5		
A	1.61	1.53	1.72	1.81	2.03		

Inside Hex Bushing



Size	1x1/8	1x1/4	1x3/8	1-1/4x3/8	1-1/4x1/2	1-1/2x1/4	1-1/2x3/8	
A	1.05	1.05	1.05	1.14	1.14	1.20	1.20	
Size	1-1/2x1/2	1-1/2x3/4	2x1/4	2x3/8	2x1/2	2x3/4	2x1	
A	1.20	1.20	1.29	1.29	1.29	1.29	1.29	
Size	2-1/2x1/2	2-1/2x3/4	2-1/2x1/2	2-1/2x3/4	3x1	3x1-1/4	3x1-1/2	
A	1.51	1.51	1.51	1.51	1.61	1.61	1.61	
Size	4x1	4x1-1/4	4x1-1/2	4x2	4x2-1/2	6x2	6x3	6x4
A	1.82	1.82	1.82	1.82	1.82	2.16	2.16	2.16

Locknut



Size	1/2	3/4	1	1-1/4	1-1/2	2
A	0.31	0.34	0.38	0.42	0.47	0.53

 **MATCO-NORCA**
Global sourcing. National compliance. Local service.

CALIFORNIA 5593 Fresca Dr., La Palma CA 90623
TEXAS 1150 Silber Rd., Houston TX 77055
ILLINOIS 278 Windy Point Dr., Glendale Heights, IL 60139
NEW YORK PO Box 27, Rt.22, Brewster NY 10509
 WEB: www.matco-norca.com

• Phone: 866-532-8306 • Fax: 866-532-8307
 • Phone: 800-935-5456 • Fax: 713-680-2999
 • Phone: 844-412-5068 • Fax: 800-640-2252
 • Phone: 800-431-2082 • Fax: 845-278-9056
 EMAIL: mail@matco-norca.com