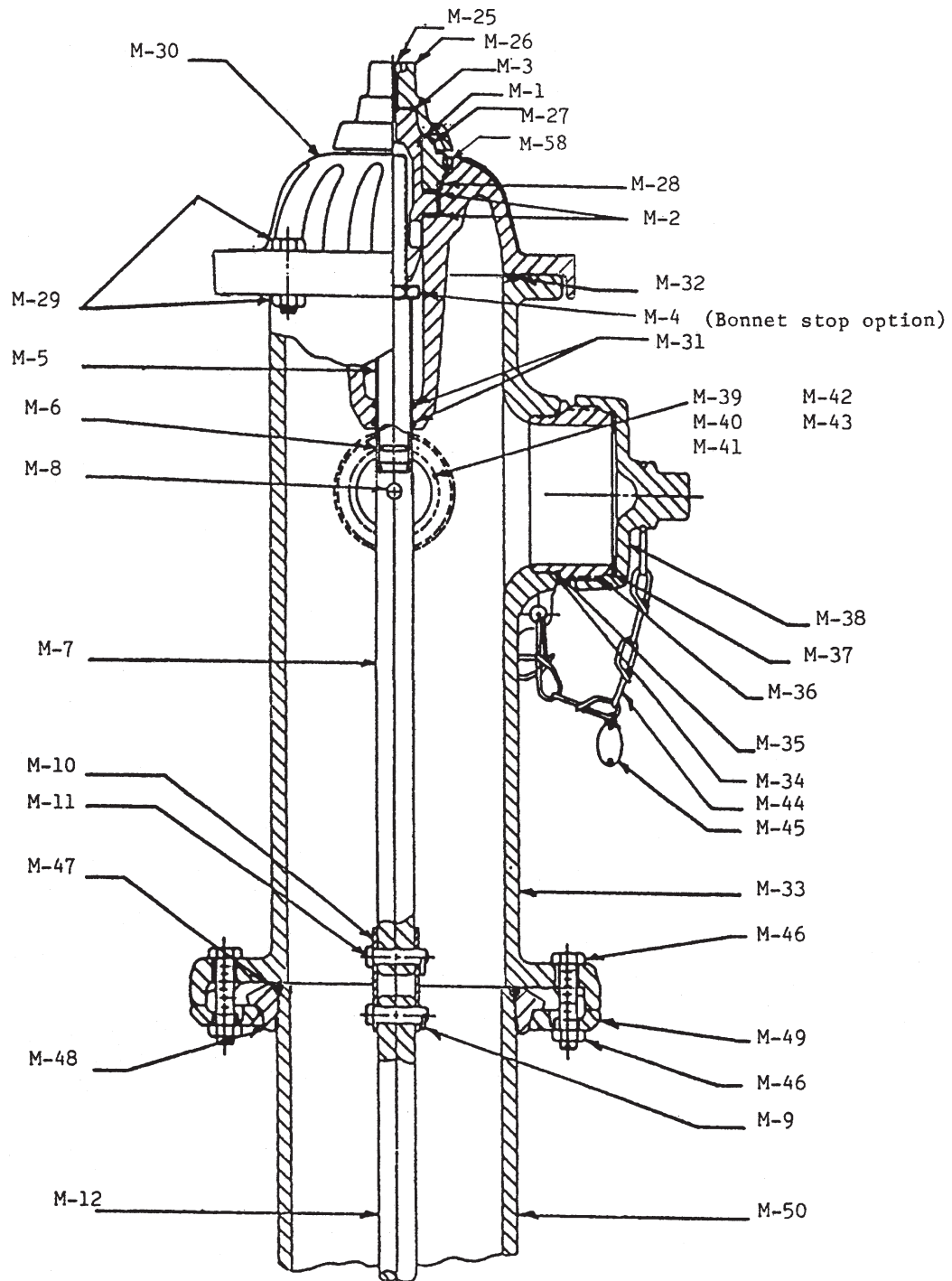


MEDALLION HYDRANT ASSEMBLY

CLOW VALVE COMPANY

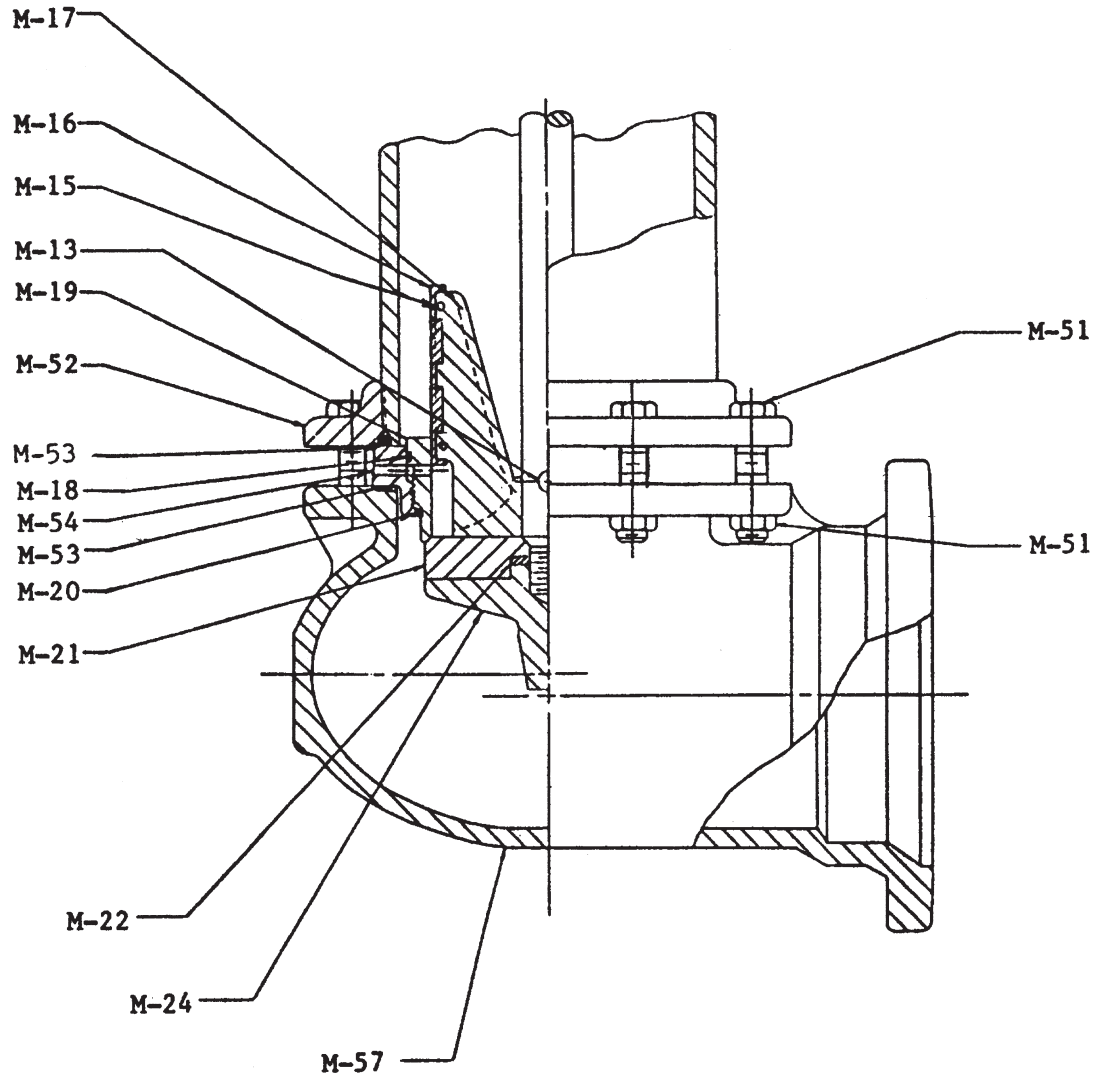
F-2545



MEDALLION HYDRANT
ASSEMBLY

CLOW VALVE COMPANY

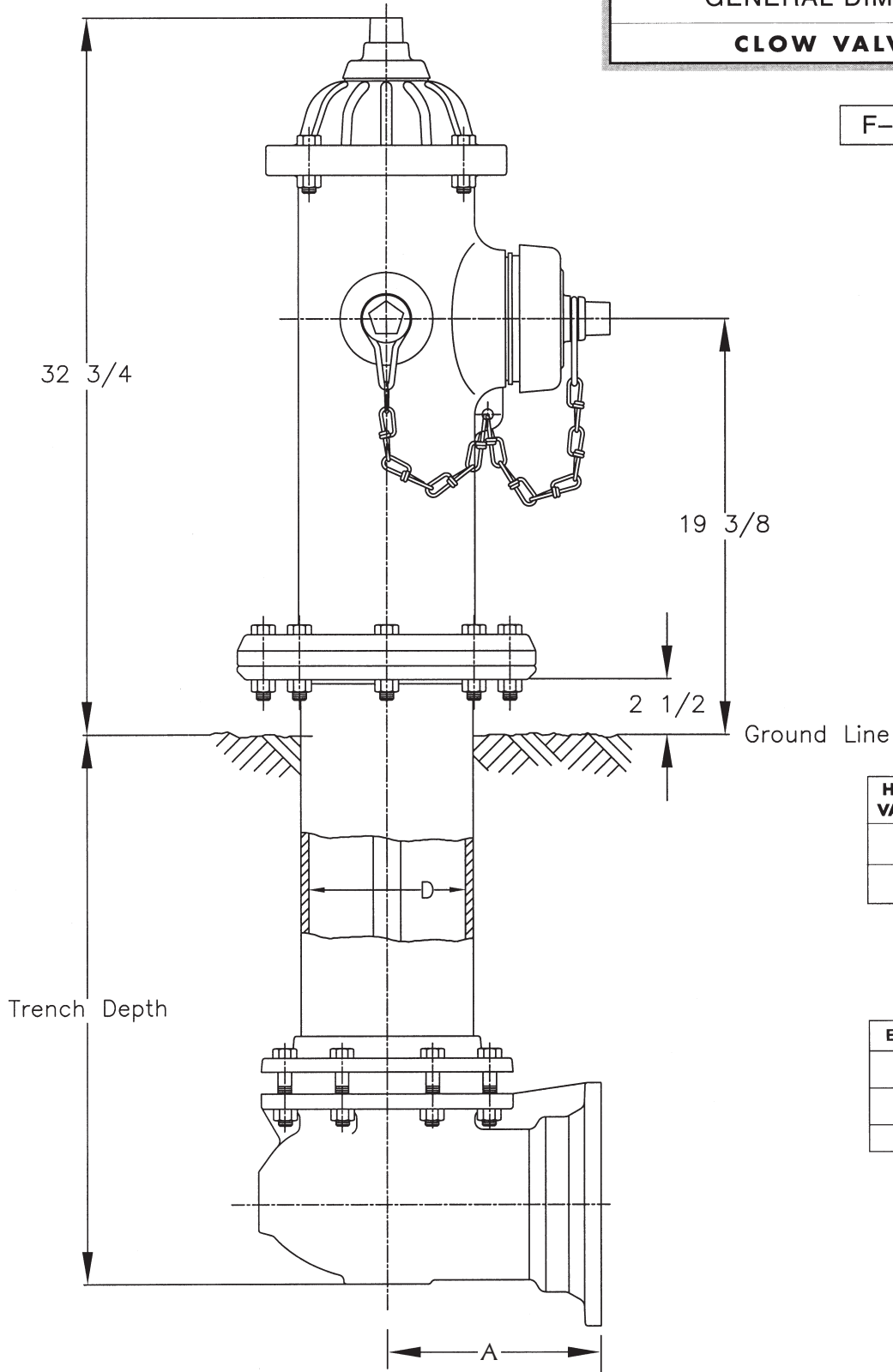
F-2545



MEDALLION HYDRANT GENERAL DIMENSION LAYOUT

CLOW VALVE COMPANY

F-2545



HYDRANT VALVE SIZE	D
4 $\frac{1}{2}$ "	6.16 ± .14
5 $\frac{1}{4}$ "	7.04 ± .14

END TYPE	A
Flange	8 $\frac{1}{8}$ "
SMJ	9"
Tyton	9 $\frac{5}{8}$ "

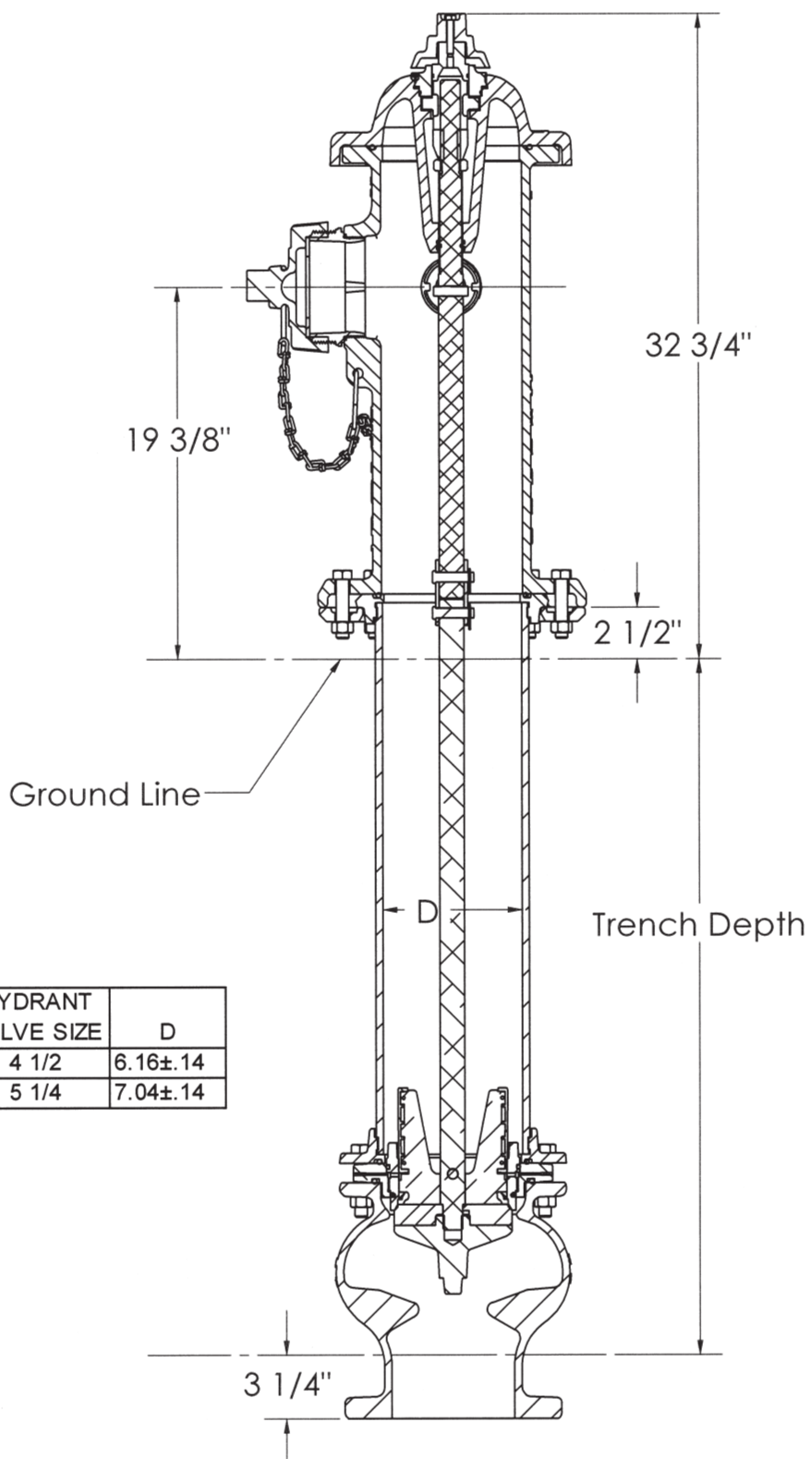
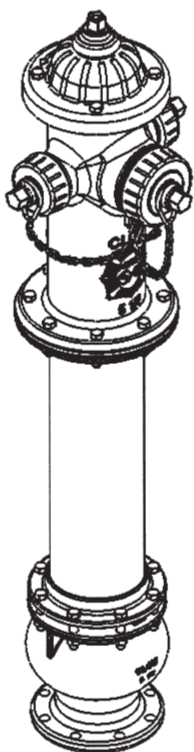
MEDALLION HYDRANT Vertical Bottom General Dimension Layout

CLOW VALVE COMPANY

Hydrant complies with AWWA C502 & C550 standards.

Hydrant complies with UL 246 and FM standard.

Hydrant has a rated working pressure of 250 psig.

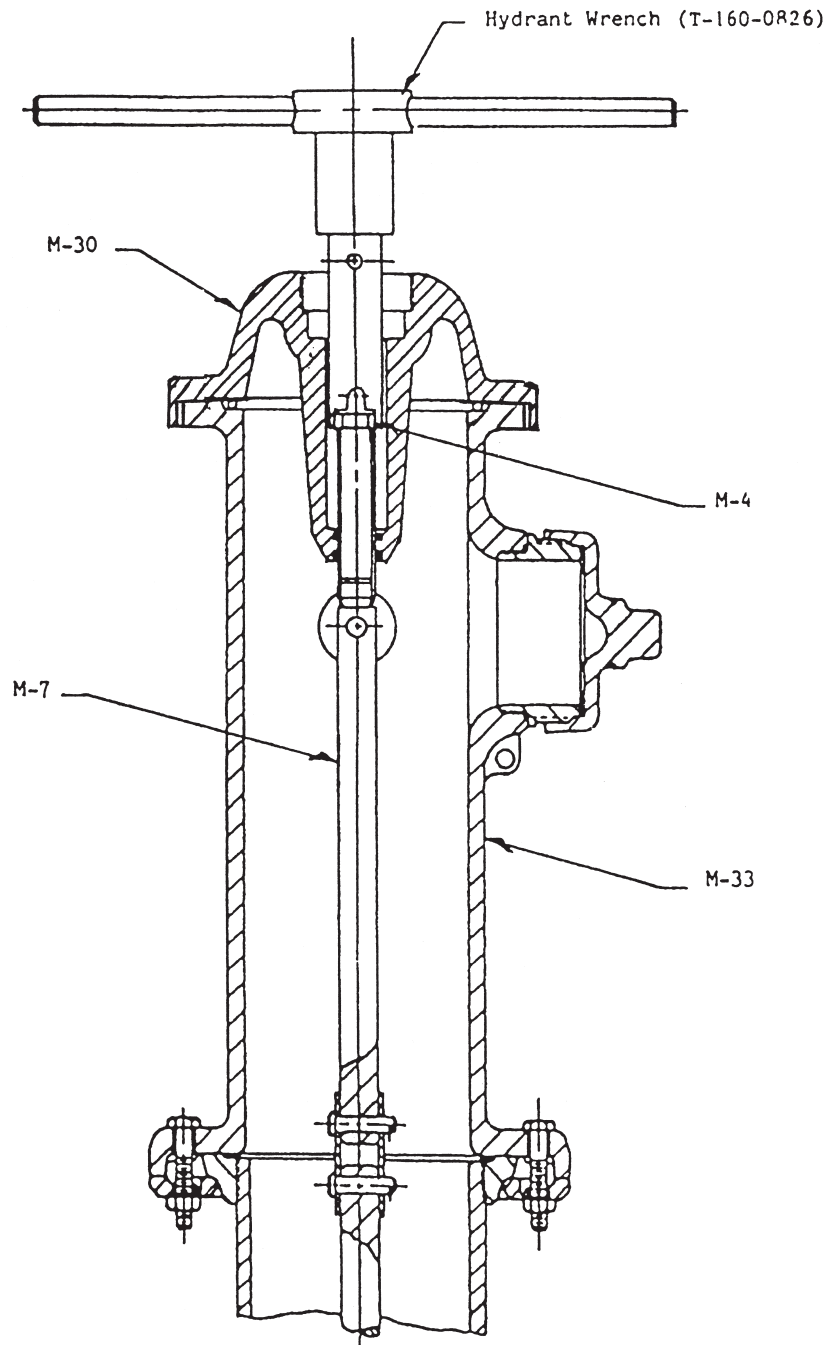


HYDRANT VALVE SIZE	D
4 1/2	6.16±.14
5 1/4	7.04±.14

MEDALLION HYDRANT
MAIN VALVE SEAT REMOVAL
HYDRANT WRENCH-BONNET STOP OPTION

CLOW VALVE COMPANY

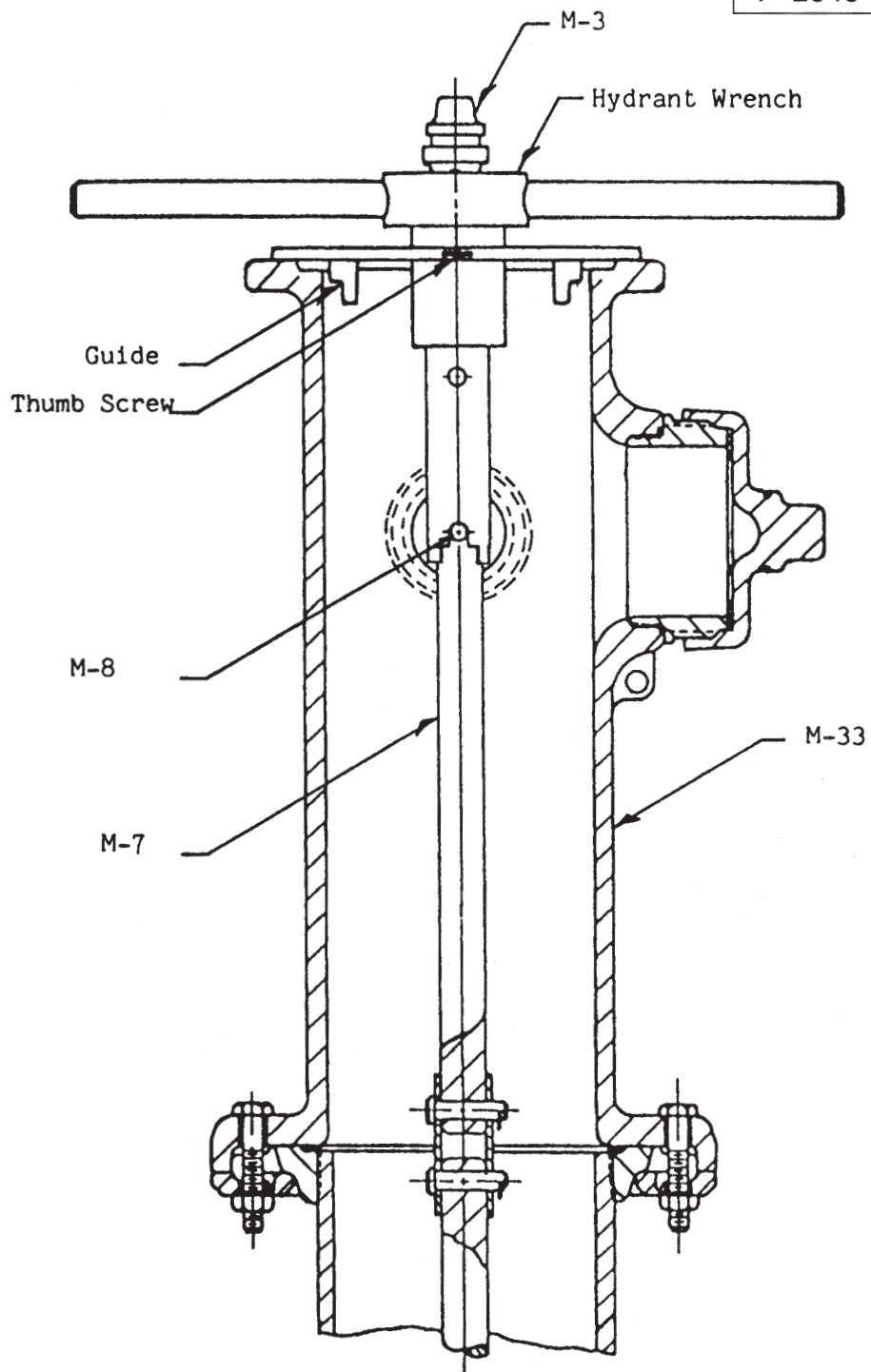
F-2545



MEDALLION HYDRANT
MAIN VALVE SEAT REMOVAL
HYDRANT WRENCH

CLOW VALVE COMPANY

F-2545



MEDALLION HYDRANT
AWWA UL/FM
SAMPLE SPECIFICATIONS

CLOW VALVE COMPANY

1. Fire Hydrant shall be manufactured in accordance with AWWA Standard C502, be listed by Underwriters Laboratories, Inc. and have Factory Mutual Research approval.
2. Fire Hydrant shall be designed for 250 psi working pressure and tested to 500 psi Hydrostatic pressure.
3. Fire Hydrant shall be backed by manufacturers 10-year limited warranty.
4. Fire Hydrant shall be dry-top center stem construction having an O-Ring sealed lubrication reservoir.
5. Fire Hydrant shall be manufactured with operating nut and thrust nut made of copper alloy with bearings located both above and below the thrust collar and with operating nut protected by a cast-iron weather shield.
6. Fire Hydrant shall be manufactured with nozzles mechanically locked into the barrel coupling. Nozzle section must rotate 360 degrees.
7. Fire Hydrant shall be a "Traffic Model", complete with safety flanges and steel stem coupling. Nozzle section must rotate 360 degrees.
8. Fire Hydrant shall be manufactured with a main valve seat ring of copper alloy threaded into a copper alloy drain ring. A 360 degree drain channel shall have a minimum of two drain outlets.
9. Fire Hydrant shall have a copper alloy upper valve plate and two urethane rubber facings that activate the drain ports.
10. Fire Hydrant shall be manufactured with a lower valve plate that bottoms out in the shoe for maximum opening.
11. Fire Hydrant shall be manufactured with a minimum main valve opening of 4½ or 5¼ inches.
12. Fire Hydrant shall be the CLOW MEDALLION as manufactured by the Clow Valve Company or approved equal.