

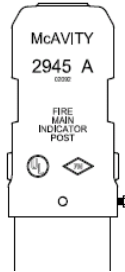
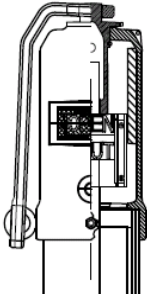
CLOW
CANADA

**2945A / 2945 HD / 2945 HDG
TELESCOPING INDICATOR POSTS**

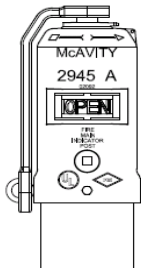
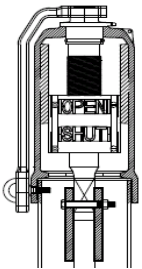
**UL/ULC Listed,
FM Approved**

October 2013

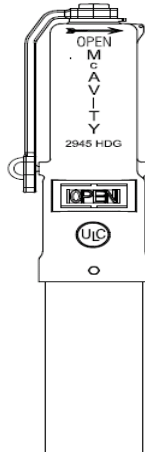
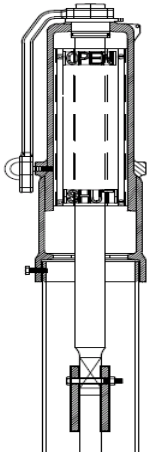
**CLOW CANADA TELESCOPING
INDICATOR POSTS:**



2945A – 3 – 12" VALVES
60 turns maximum
24" telescoping length



2945HD – 14 & 16" VALVES
60 turns maximum
24" telescoping length



2945 HDG – 18 – 24" GEARED VALVES
242 turns maximum
24" telescoping length

- Fully complies with ULC Standard 789
- FM Standard Class #1110
- Meets NFPA24 standards
- Made for AWWA C509/C515 gate valves with a post indicator mounting plate and a 2" square wrench nut
- Indicator posts are extendable after installation
- Indicator posts are tapped (plugged) for control valve supervisory switch installation
- Post indicators can also be affixed to the Kennedy KS300 – Class 250 flanges 300 PSI Maximum WWP resilient wedge gate valves 3 – 12" sizes
- Weather proofing kits available
- Thermal break flange kits available
- Working top portion interchangeable with older McAvity 6225 / 6221 models
- Corrosion resistant KEN-GUARD TGIC heat fused polyester coated
- Epoxy coated lower pipe available

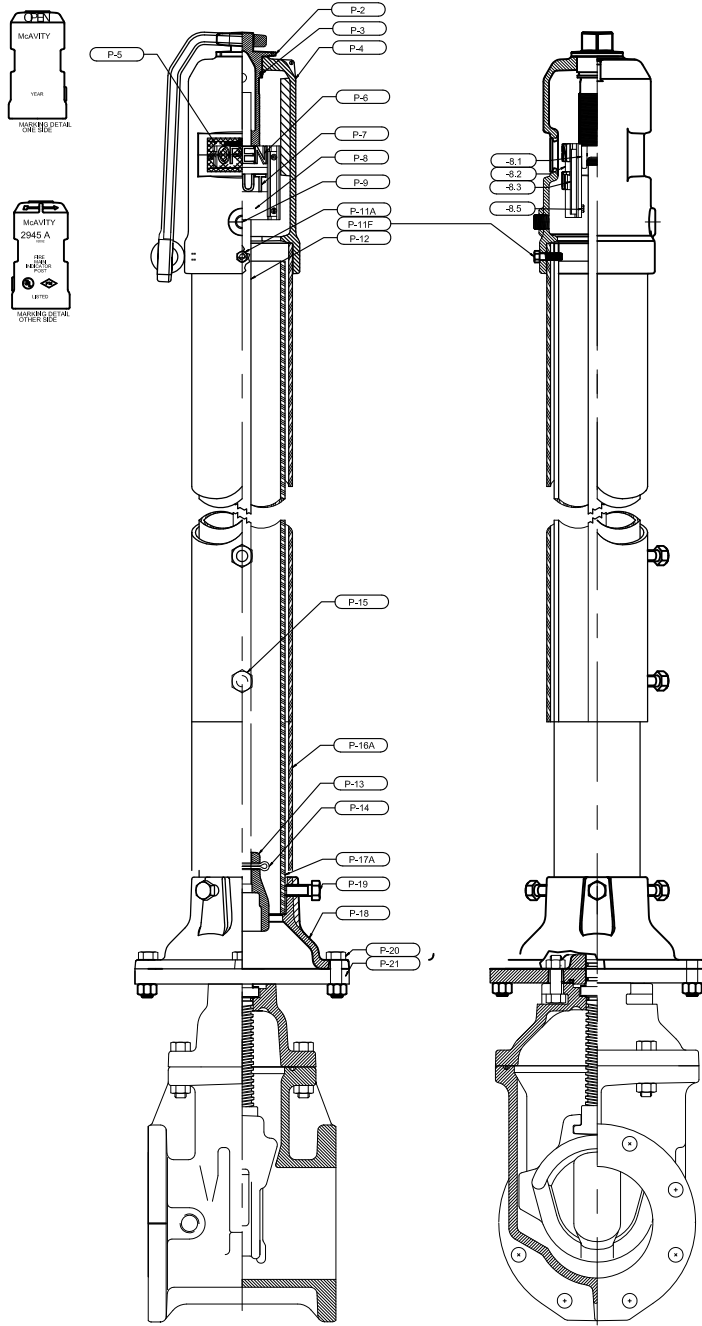
McAvity

CLOW

CONCORD

A division of Canada Pipe Company Ltd.

DO NOT SCALE



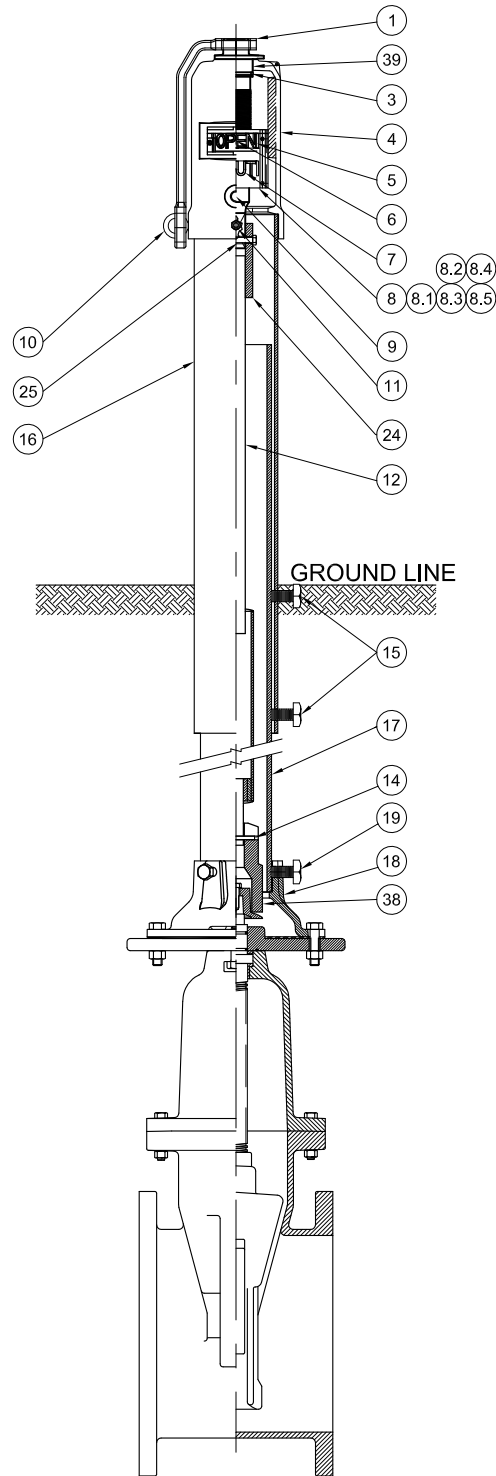
REF. No.	DESCRIPTION	MATERIAL	ASTM / ANSI	QUANTITY
1	WRENCH	CAST IRON	A-126-B	1
2	OPERATING NUT	BRONZE	B584 / CDA864	1
3	OPERATING NUT "O" RING	BUNA N		1
4	2945A INDICATOR POST CAP	CAST IRON	A-126-B	1
5	WINDOW GLASS	LEXAN		2
6	TARGET OPEN	CAST ALUMINUM		2
7	TARGET SHUT	CAST ALUMINUM		2
8	TARGET CARRIER ASSEMBLY			
8.1	TARGET CARRIER NUT	BRONZE	B584 / CDA864	1
8.2	TARGET CARRIER PLATE	1/16" STEEL SHEET		2
8.3	TARGET RETAINER CLAMP	16GA ST. STEEL		
8.4	PAN HEAD SCREW #10-24 x 1/2"	STEEL Z.P.		
8.5	HEX NUT #10-24	STEEL Z.P.		
9	PIPE PLUG 1/2" NPT	STEEL		1
10	EYEBOLT 3/8" x 1" LG	STEEL		1
11	HEX HEAD BOLT 3/8"-16 x 1" LG	STEEL Z.P.		1
12	OPERATING STEM	1" SQUARE STEEL	A-107	1
13	BOTTOM NUT	CAST IRON	A-126-B	1
14	SPRING PIN 1/4" x 2 1/2" LG	STEEL		1
15	3/4"-10 SQUARE HEAD SET SCREW	STEEL		2
16	ADJUSTABLE INDICATOR POST BODY	5" DUCTILE IRON PIPE	CL 52 ANSI A21.51	1
17	ADJUSTABLE LOWER SECTION PIPE	4" DUCTILE IRON PIPE	CL 52 ANSI A21.51	1
18	BASE FLANGE	CAST IRON	A-126-B	1
19	5/8"-11 SQUARE HEAD SET SCREW	STEEL Z.P.		3

WEIGHT
MATERIAL
FINISH
UNLESS OTHERWISE SPECIFIED DECIMAL DIM'S IN 2 PLACES + or - .02 DIM'S IN 3 PLACES + or - .01 FRACTION DIM'S UNDER 6" + or - DIM'S OVER 6" + or -

PROJECT :	DRAWN	2945A INDICATOR POST ASSEMBLY AND MATERIAL LIST CLOW CANADA SCALE _____ DATE SEPT. 04/13 DRAWING No. McM-551509
PURCHASE ORDER No.	CHECKED	
OWNER :	EXAMINED	
PROJECT No.	NOTED	
	APPROVED	

REF. NOS.

DO NOT SCALE



REF. No.	DESCRIPTION	MATERIAL	ASTM / ANSI	QTY.
1	WRENCH	CAST IRON	A-126-B	1
3	OPERATING NUT "O" RING	BUNA N		1
4	2945A INDICATOR POST CAP	CAST IRON	A-126-B	1
5	WINDOW GLASS	LEXAN		2
6	TARGET OPEN	CAST ALUMINUM		2
7	TARGET SHUT	CAST ALUMINUM		2
8	TARGET CARRIER ASSEMBLY			
8.1	TARGET CARRIER NUT	BRONZE	B584 / CDA864	1
8.2	TARGET CARRIER PLATE	1/16" STEEL SHEET		2
8.3	TARGET RETAINER CLAMP	16GA ST. STEEL		4
8.4	PAN HEAD SCREW #10-24 x 1/2"	STEEL Z.P.		8
8.5	HEX NUT #10-24	STEEL Z.P.		4
9	PIPE PLUG 1/2" NPT	STEEL		1
10	EYEBOLT 3/8" x 1" LG	STEEL		1
11	HEX HEAD BOLT 3/8"-16 x 1" LG	STEEL Z.P.		1
12	OPERATING PIPE STEM	STEEL	A-107	1
14	SPRING PIN 1/4" x 2 1/2" LG	STEEL		1
15	3/4"-10 SQUARE HEAD SET SCREW	STEEL		2
16	ADJUSTABLE INDICATOR POST BODY	5" DUCTILE IRON PIPE	CL 52 ANSI A21.51	1
17	ADJUSTABLE LOWER SECTION PIPE	4" DUCTILE IRON PIPE	CL 52 ANSI A21.51	1
18	BASE FLANGE	CAST IRON	A-126-B	1
19	5/8"-11 SQUARE HEAD SET SCREW	STEEL		3
24	HEAVY DUTY STEM COUPLING	DUCTILE IRON		1
25	3/8" x 3" LG HEX BOLT AND NUT	STEEL Z.P.		1
38	HEAVY DUTY BOTTOM NUT	DUCTILE IRON	A-536	1
39	2945A HEAVY DUTY OPERATING NUT	BRONZE	B584 / CDA864	1

WEIGHT
MATERIAL
FINISH
UNLESS OTHERWISE SPECIFIED DECIMAL DIM'S IN 2 PLACES + or - .02 DIM'S IN 3 PLACES + or - .01 FRACTION DIM'S UNDER 6" + or - DIM'S OVER 6" + or -

PROJECT	DRAWN	2945 HD INDICATOR POST ASSEMBLY AND MATERIAL LIST CLOW CANADA SCALE NTS DATE SEPT. 09,2013 DRAWING No. McH-551342
OWNER	CHECKED	
DISTRIBUTOR	EXAMINED	
CONSULTANT	NOTED	
	APPROVED	
	<i>Ken McLauney</i>	

REF. NOS.



1757 Burlington St. E.

Hamilton, ON L8N 3R5

PH: 905-548-9604 / 1-800-561-9931

FX: 905-547-0113

www.clowcanada.com

KENNEDY /CLOW ULC/FM 2945A INDICATOR POSTS & INDICATOR POST VALVES STANDARD STOCK MODELS & BURY DEPTHS & GENERAL INFORMATION

MODEL 2945A : The length of bury is the distance measured to the nearest half foot from the bottom of the connecting pipe to the finished grade.

McAVITY POST INDICATORS

MODEL 2945A Weight Lbs

BURY CODE	B	C	D	E
KENNEDY 2945A (BURY RANGE B THROUGH E) TELESCOPING INDICATOR POST (3 - 14" valve) ULC/ FM approved - 60 TURNS MAXIMUM				
WEIGHT & LENGTH	160 lbs / 71" long	190 lbs / 89" long	219 lbs / 107" long	265 lbs / 137" long
size	bury range (ft / metres)	bury range (ft / metres)	bury range (ft / metres)	bury range (ft / metres)
3"	2'5"-4'1" / 0.76-1.25	3'8"-5'6" / 1.16-1.7	5'4"-7' / 1.64-2.13	7'4"-9'4" / 2.25-2.86
4"	2'7"- 4'3" / 0.79-1.30	4'0"- 5'8" / 1.23- 1.73	5'6"- 7'2" / 1.68- 2.18	7'6"- 9'6" / 2.29-2.9
6"	2'11"- 4'7" / 0.89-1.40	4'5"- 6'1" / 1.32- 1.85	5'11"- 7'7" / 1.80- 2.31	7'11"- 9'11" / 2.41- 3.02
8"	3'4"- 5'0" / 1.02-1.52	4'10"- 6'6" / 1.47- 1.98	6'4"- 8'0" / 1.93- 2.44	8'4"-10'4" / 2.54-3.15
10"	3'9"- 5'5" / 1.14-1.65	5'3"- 6'11" / 1.60- 2.12	6'9"- 8'5" / 1.60- 2.57	8'9"- 10'8" / 2.67-3.25
12"	4'1"- 5'9" / 1.24-1.75	5'7"- 7'3" / 1.70- 2.21	7'1"- 8'9" / 2.16- 2.67	9'1"- 11'1" / 2.77-3.38
14"	4'10"-6'6" / 1.47-1.98	6'4"-8'0" / 1.93-2.44	7'10"-9'6" / 2.39-2.89	9'10"-11'10" / 2.99-3.6

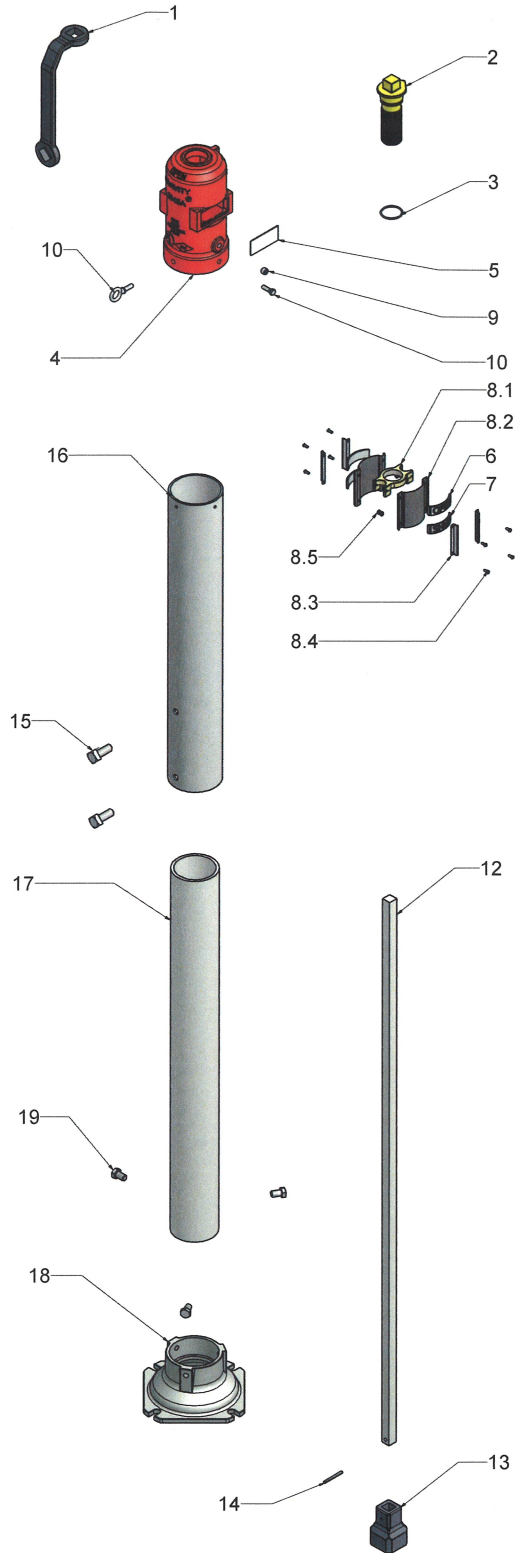
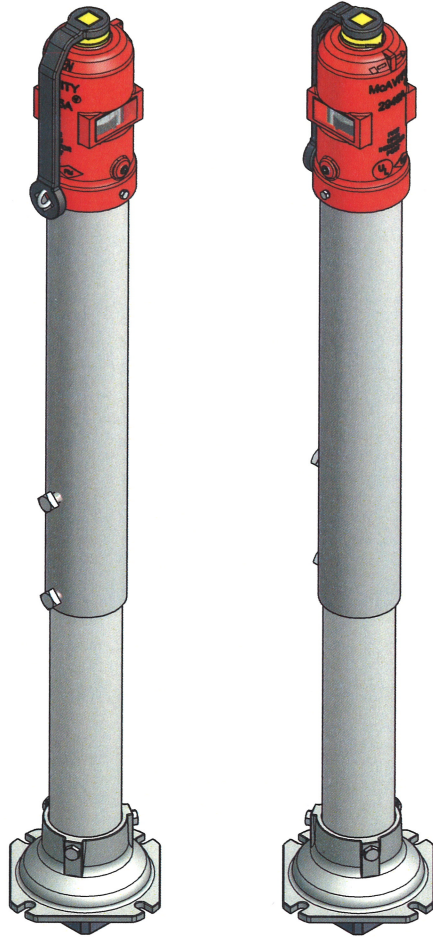
INDICATOR POST VALVES /AWWA C509 3 - 12 AWWA C515 14 & LARGER /DUCTILE IRON or CAST IRON CLASS 125 , FLANGED, FF ANSI B16.1(all standard end connections available)/ ULC& FM APPROVED 3- 16" Dia./ EPOXY COATED ULC/FM RATED TO 200 PSI WWP

Post Indicator Valves

SIZE	PIV CAST & DUCTILE IRON - TURNS TO FULL	WEIGHT
3"	10.00	78
4"	13.50	103
6"	19.50	150
8"	25.50	228
10"	31.50	385
12"	37.75	539
14"	52.00	700

** Weight is for Flange Valves - other styles weight may be + or - 5%

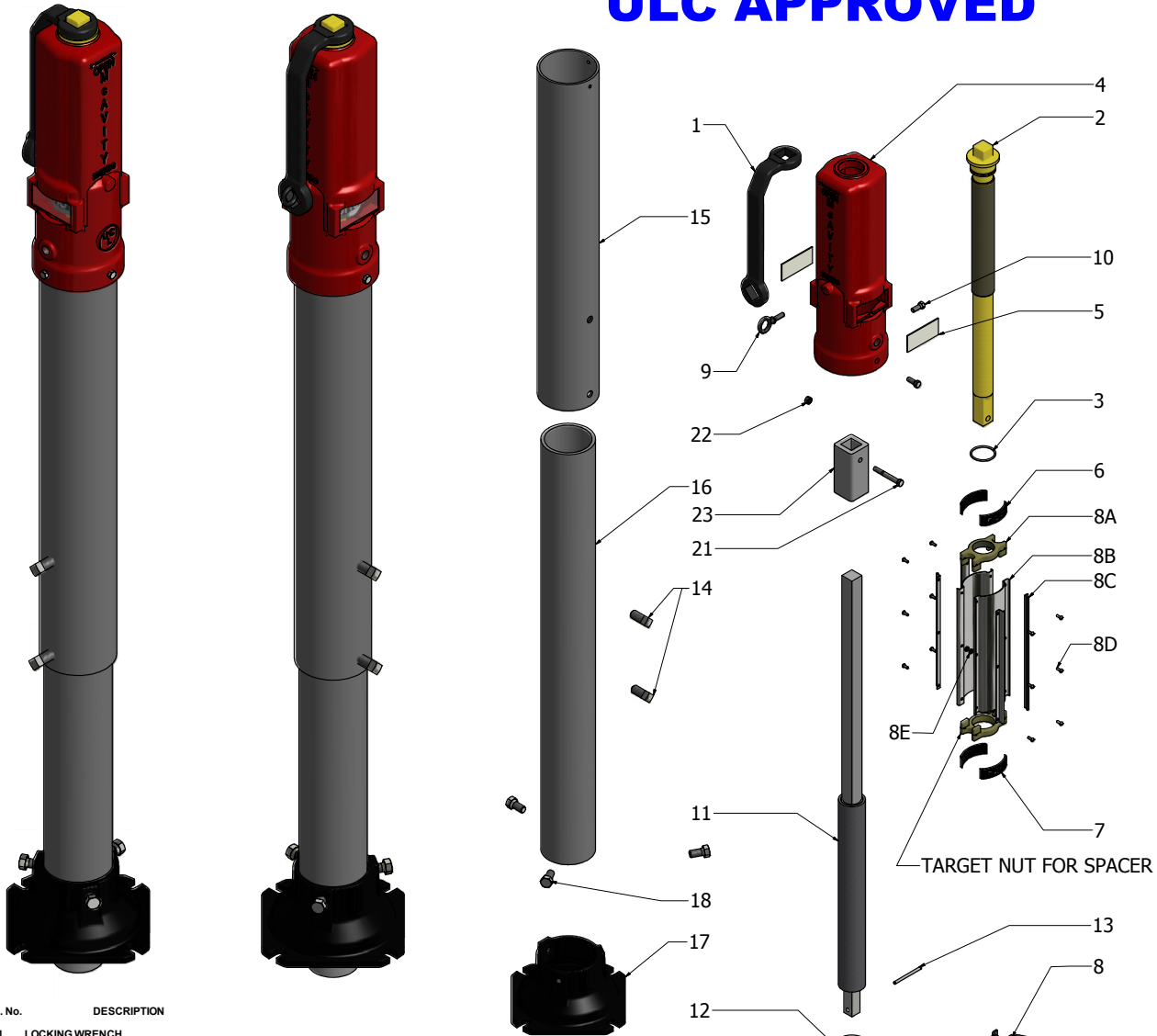
** NOTE: 16" & LARGER VALVES USE 2945A HD OR HDG INDICATOR POST



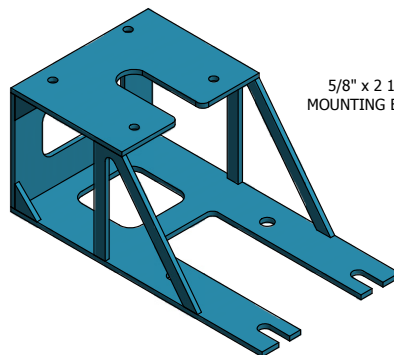
REF. No.	DESCRIPTION
1	WRENCH
2	OPERATING NUT
3	OPERATING NUT "O" RING
4	2945A INDICATOR POST CAP
5	WINDOW GLASS
6	TARGET OPEN
7	TARGET SHUT
8	TARGET CARRIER ASSEMBLY
8.1	TARGET CARRIER NUT
8.2	TARGET CARRIER PLATE
8.3	TARGET RETAINER CLAMP
8.4	PAN HEAD SCREW #10-24 x 1/2"
8.5	HEX NUT #10-24
9	PIPE PLUG 1/2" NPT
10	EYEBOLT 3/8" x 1" LG
11	HEX HEAD BOLT 3/8"-16 x 1" LG
12	OPERATING STEM
13	BOTTOM NUT
14	SPRING PIN 1/4" x 2 1/2" LG
15	3/4"-10 SQUARE HEAD SET SCREW
16	ADJUSTABLE INDICATOR POST BODY
17	ADJUSTABLE LOWER SECTION PIPE
18	BASE FLANGE
19	5/8"-11 SQUARE HEAD SET SCREW



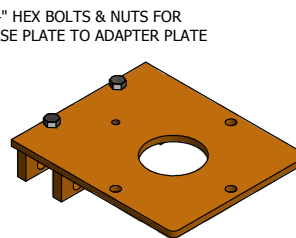
2945HDG INDICATOR POST ULC APPROVED



REF. No.	DESCRIPTION
1	LOCKING WRENCH
2	2945HDG OPERATING NUT
3	RETAINER "O" RING
4	2945HDG INDICATOR POST CAP
5	WINDOW GLASS
6	TARGET "OPEN"
7	TARGET "SHUT"
8	2945HDG TARGET CARRIER ASSEMBLY
8A	TARGET CARRIER NUT
8B	2945HDG TARGET CARRIER PLATE
8C	2945HDG TARGET RETAINER CLAMP
8D	PAN HEAD SCREW #10-24 x 1/2"
8E	HEX NUT #10-24
9	EYEBOLT 3/8" x 1" LG
10	HEX HEAD BOLT 3/8"-16 x 1" LG
11	2945HDG OPERATING STEM
12	BOTTOM NUT (COUPLE STEM TO VALVE)
13	SPRING PIN 1/4" x 2 1/2" LG
14	3/4"-10 SQUARE HEAD SET SCREW
15	ADJUSTABLE INDICATOR POST BODY
16	ADJUSTABLE LOWER SECTION PIPE
17	BASE FLANGE
20	HEX NUT 5/8-11
21	3/8" x 3 HEX BOLT
22	HEX NUT 3/8-16
23	1 1/4" SQ. STEM COUPLING



SPUR GEAR ADAPTER



BEVEL GEAR ADAPTER

5/8" x 2 1/4" HEX BOLTS & NUTS FOR MOUNTING BASE PLATE TO ADAPTER PLATE

