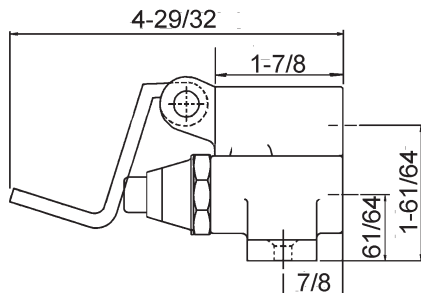
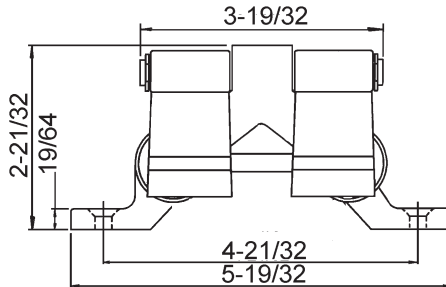




JFVC-301

**FAUCET GROUP**  
FOOT PEDAL VALVE

SUBMITTAL DATA



**TECHNICAL DATA**  
**CONSTRUCTION:**

Floor mount  
Solid, heavy duty cast brass body  
Renewable self-closing valve unit  
Replaceable seats  
Replaceable reinforced nitrile rubber packing  
Chrome plated cast brass foot pedals  
Pedals flip-up and stay put to clear floor for cleaning  
Equipped with water saving aerator  
Conforms with ANSI standard 112.18.1

**FINISH**

Polished chrome plate

**A.D.A. COMPLIANT**

No

**VARIANTS**

None

**OPTIONS**

**SPOUTS**

JS-10 - Wall Mount Gooseneck Spout  
JS-20 - Deck mount Spout  
2.2 GPM flow restricting aerator

**Dimensions tolerance +/- 1/4".**

APPROVED FOR MANUFACTURING

MODEL NO.: \_\_\_\_\_ QTY: \_\_\_\_\_

JOB NAME: \_\_\_\_\_

TAG/ITEM: \_\_\_\_\_

CUSTOMER: \_\_\_\_\_

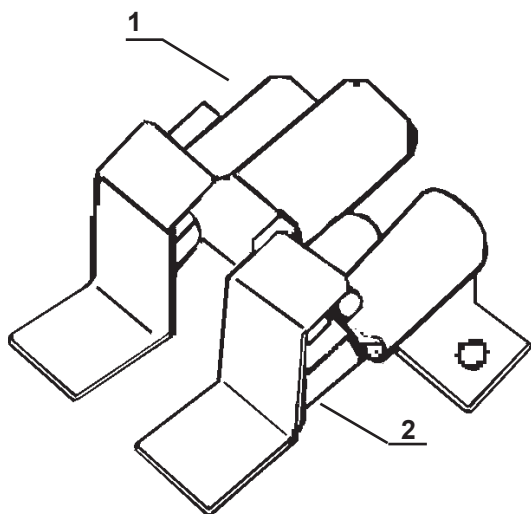
SIGNATURE: \_\_\_\_\_

JUST MFG. COMPANY CONTINUES TO MAKE QUALITY AND FUNCTIONALITY A MARK OF THE JUST PRODUCT LINE. TO DO SO REQUIRES THAT WE RESERVE THE RIGHT TO CHANGE PRODUCT INFORMATION WITHOUT NOTICE. DIMENSIONS MAY VARY AND ARE SUBJECT TO CHANGE WITHOUT NOTICE. NO RESPONSIBILITY IS ASSUMED FOR USE OF SUPERCEDED OR VOIDED DATA. FOR THE MOST CURRENT AND ACCURATE INFORMATION REGARDING THE COMPLETE LINE OF JUST SINKS, FAUCETS AND DRAINS, CLICK ON THE **SPEC LINE DRAWINGS** LINK ON OUR WEB SITE AT [www.justmfg.com](http://www.justmfg.com)

JUST MANUFACTURING COMPANY

9233 KING STREET . FRANKLIN PARK . ILLINOIS . 60131-2111

PH: 847-678-5150 . FAX: 847-678-6817 . E-MAIL: [custserv@justmfg.com](mailto:custserv@justmfg.com) . [www.justmfg.com](http://www.justmfg.com)



Item No.	Part No.	Description
1	FK-2510	Double pedal valve body
2	FY5002	Cartridge