



J-7220

INSTITUTIONAL GROUP

MULTI-STATION SURGEON'S WASH-UP SINK with SENSOR FAUCETS

SUBMITTAL DATA



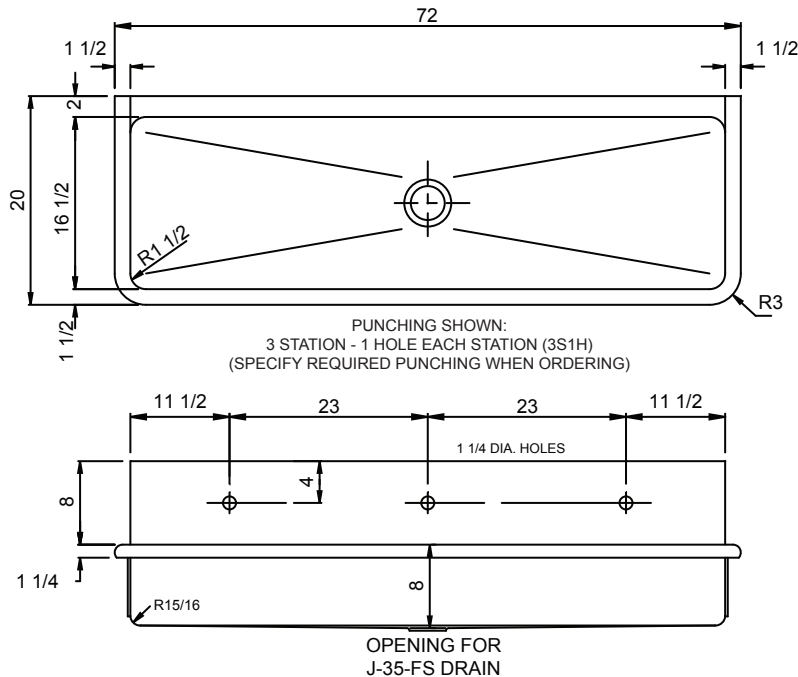
SPECIFICATION

Seamless welded construction of 14 ga. type 304 stainless steel. 1-1/2" roll rim on front and sides. Interior surfaces polished with a Hand-Blended Just Finish. Exposed exterior surfaces to have a brush standard finish. Supported by two two 14 gauge, type 304 stainless steel wall brackets and 14 gauge stainless steel wall clips. Drain punched for Just J-35-FS drain. Certified to ASME/CSA B45.4; UPC; IPC.



U.P. Code
ASME A112.19.3/CSA B45.4

Sink certified to ASME A112.19.3/CSA B45.4; Uniform Plumbing Code (UPC); International Plumbing Code (IPC), by NSF International. Certified less fittings.



APPROVED FOR MANUFACTURING

MODEL NO.: **J-7220** QTY: _____
 JOB NAME: _____
 TAG/ITEM: _____
 CUSTOMER: _____
 SIGNATURE: _____



JUST MFG. COMPANY CONTINUES TO MAKE QUALITY AND FUNCTIONALITY A MARK OF THE JUST PRODUCT LINE. WE RESERVE THE RIGHT TO CHANGE PRODUCT INFORMATION WITHOUT NOTICE. DIMENSIONS MAY CHANGE AND MAY BE SUBJECT TO CHANGE WITHOUT NOTICE. NO RESPONSIBILITY IS ASSUMED FOR USE OF SUPERCEDED OR VOIDED DATA. JUST MFG. CO. SINKS ARE MADE IN THE U.S.A. WHEN COMPARING OTHER BRAND PRODUCTS, BE SURE TO COMPARE USA QUALITY ALONG WITH FEATURES AND DIMENSIONS.

JUST MANUFACTURING COMPANY

9233 KING STREET . FRANKLIN PARK . ILLINOIS . 60131-2111

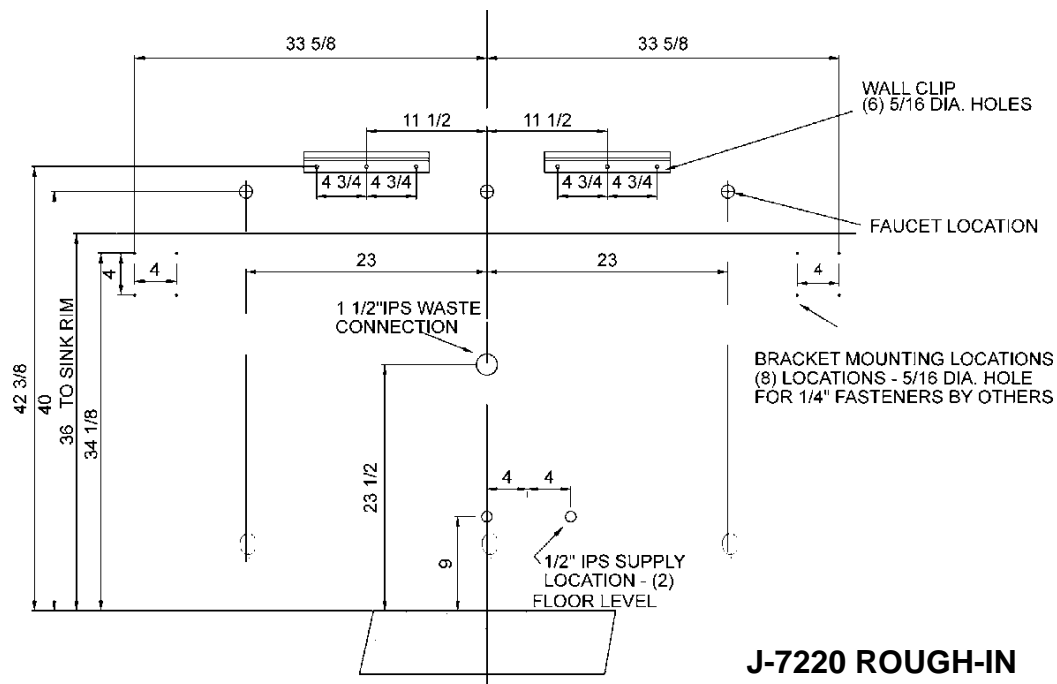
PH: 847-678-5150 . FAX: 847-678-6817 . E-MAIL: custserv@justmfg.com . www.justmfg.com



INSTITUTIONAL GROUP

J-7220 ROUGH-IN DATA

SUBMITTAL DATA



J-7220 ROUGH-IN

JUST MFG. COMPANY CONTINUES TO MAKE QUALITY AND FUNCTIONALITY A MARK OF THE JUST PRODUCT LINE. TO DO SO REQUIRES THAT WE RESERVE THE RIGHT TO CHANGE PRODUCT INFORMATION WITHOUT NOTICE. FOR THE MOST CURRENT AND ACCURATE INFORMATION REGARDING THE COMPLETE LINE OF JUST SINKS, FAUCETS AND DRAINS, CLICK ON THE **SPEC LINE DRAWINGS** LINK ON OUR WEB SITE AT www.justmfg.com

JUST MANUFACTURING COMPANY

9233 KING STREET . FRANKLIN PARK . ILLINOIS . 60131-2111

PH: 847-678-5150 . FAX: 847-678-6817

E-MAIL: custserv@justmfg.com . www.justmfg.com