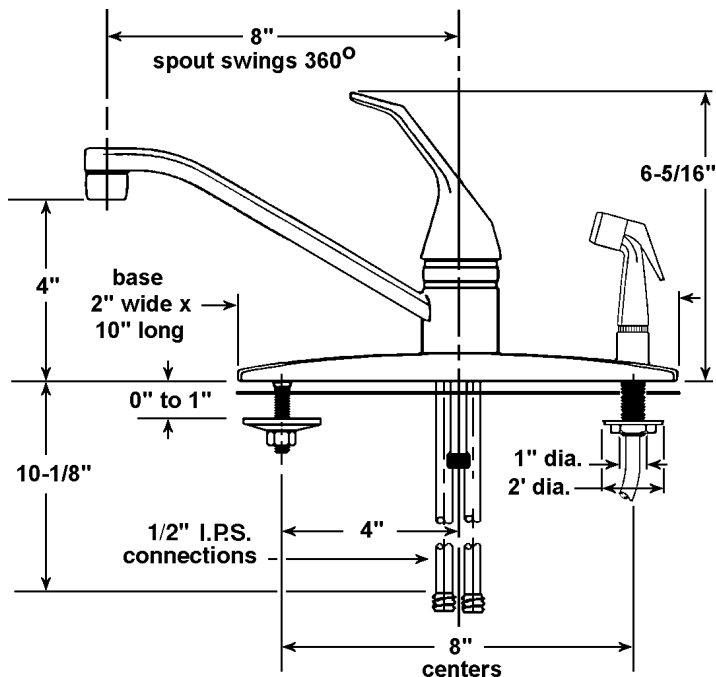




## FAUCET GROUP



### OPTIONS

#### AERATOR

Duo Stream Swivel "B"

#### VANDAL RESISTANT

Aerator "VR-A"

Job Name \_\_\_\_\_

Customer \_\_\_\_\_

Architect/Engineer \_\_\_\_\_

APPROVED FOR MANUFACTURING

MODEL NO. \_\_\_\_\_ QTY. \_\_\_\_\_

COMPANY \_\_\_\_\_

TITLE \_\_\_\_\_ DATE \_\_\_\_\_

SIGNATURE \_\_\_\_\_

REVISED-5/2004

# J-902

## DECKMOUNT SINK FAUCET



### TECHNICAL DATA CONSTRUCTION:

Single lever deck mounted kitchen sink faucet  
Spray mounted on faucet base  
8" brass swing spout  
Brass body  
Chrome plated die cast lever handle  
Replaceable washerless valve cartridge  
1/2" I.P.S. copper connections  
Equipped with water saving aerator  
Conforms with ANSI standard 112.18.1  
Certified to NSF/ANSI 61

### FINISH

Polished chrome

### FLOW RATE

2.2 GPM max.

### A.D.A. COMPLIANT

Yes

### VARIANTS

None

JUST MFG. COMPANY CONTINUES TO MAKE QUALITY AND FUNCTIONALITY A MARK OF THE JUST PRODUCT LINE. TO DO SO REQUIRES THAT WE RESERVE THE RIGHT TO CHANGE PRODUCT INFORMATION WITHOUT NOTICE. DIMENSIONS MAY VARY AND ARE SUBJECT TO CHANGE WITHOUT NOTICE. NO RESPONSIBILITY IS ASSUMED FOR USE OF SUPERCEDED OR VOIDED DATA. FOR THE MOST CURRENT AND ACCURATE INFORMATION REGARDING THE COMPLETE LINE OF JUST SINKS, FAUCETS AND DRAINS, CLICK ON THE **SPEC LINE DRAWINGS** LINK ON OUR WEB SITE AT [www.justmfg.com](http://www.justmfg.com)

JUST MANUFACTURING COMPANY

9233 KING STREET . FRANKLIN PARK . ILLINOIS . 60131-2111

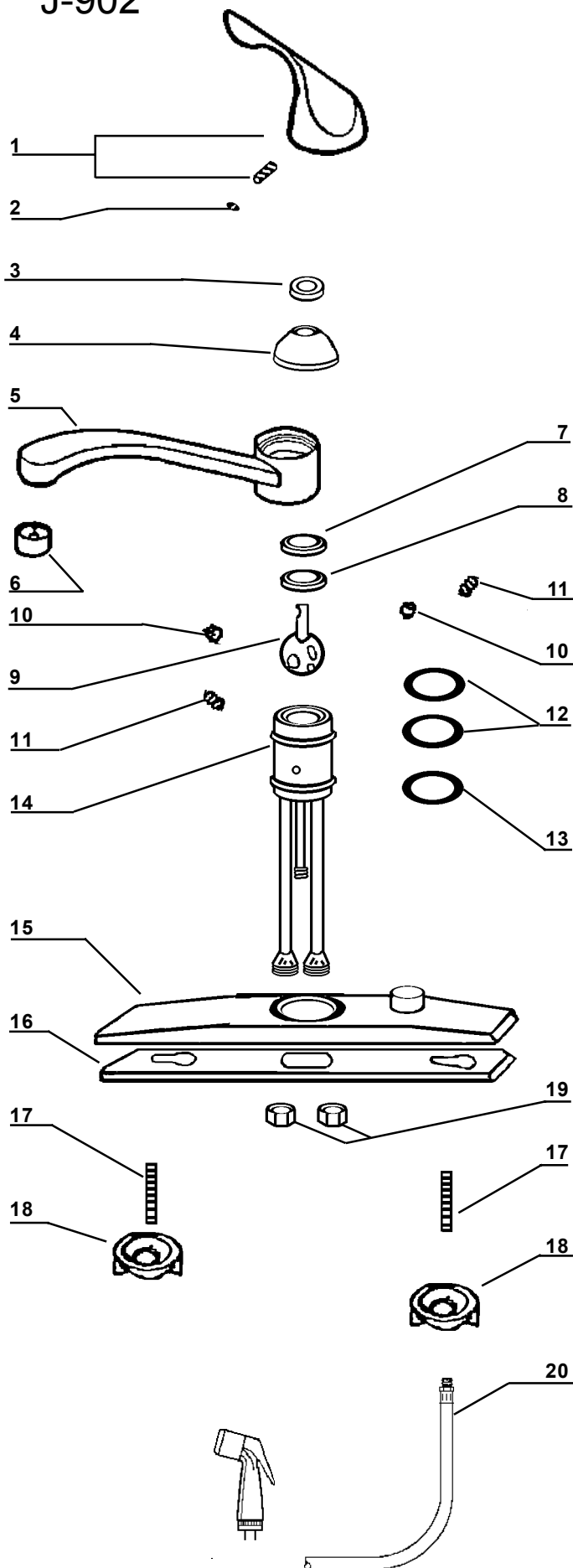
PH: 847-678-5150

FAX: 847-678-6817

E-MAIL: [custserv@justmfg.com](mailto:custserv@justmfg.com)

[www.justmfg.com](http://www.justmfg.com)

J-902



# Just FAUCET GROUP

## DECKMOUNT SINK FAUCET



Item No.	Part No.	Description
1	15C-812-01	Lever handle assembly - Chrome
2	10-822-02	Hot/Cold Index
3	01-812-03	Bonnet Ring
4	15C-812-04	Bonnet
5	O3C-812-05	Spout
6	01C-407-099	Aerator assembly
7	20-812-06	Bonnet Cap
8	30-812-07	Cartridge gasket
9	10-812-08	Cartridge
10	30-425-16	Port seal ring
11	10-425-17	Port spring
12	30-812-16	O-Ring
13	20-812-17	Poly gasket
14	- -	Core(not available)
15	20-735-16	Deck cover
16	20-735-17	Deck base
17	- -	Core screws (not available)
18	20-812-13	Mounting hardware parts bag (2 sets per bag)
19	01-408-26B	Nuts (2 required)
20	LT7714	Spray and hose assembly

JUST MFG. COMPANY CONTINUES TO MAKE QUALITY AND FUNCTIONALITY A MARK OF THE JUST PRODUCT LINE. TO DO SO REQUIRES THAT WE RESERVE THE RIGHT TO CHANGE PRODUCT INFORMATION WITHOUT NOTICE. DIMENSIONS MAY VARY AND ARE SUBJECT TO CHANGE WITHOUT NOTICE. NO RESPONSIBILITY IS ASSUMED FOR USE OF SUPERCEDED OR VOIDED DATA. FOR THE MOST CURRENT AND ACCURATE INFORMATION REGARDING THE COMPLETE LINE OF JUST SINKS, FAUCETS AND DRAINS, CLICK ON THE **SPEC LINE DRAWINGS** LINK ON OUR WEB SITE AT [www.justmfg.com](http://www.justmfg.com)

**JUST MANUFACTURING COMPANY**

9233 KING STREET . FRANKLIN PARK . ILLINOIS . 60131-2111

PH: 847-678-5150

FAX: 847-678-6817

E-MAIL: [custserv@justmfg.com](mailto:custserv@justmfg.com)

[www.justmfg.com](http://www.justmfg.com)