

# Style 65 Compression Couplings & Fittings

## For Use on Steel Pipe

### Why use Dresser® Style 65 Fittings?

- **Simple** - No disassembly required. Dresser Style 65 compression couplings and fittings install onto plain-end pipe or tubing, eliminating the need for threading, flaring or an exact pipe fit.
- **Fast** - Just a few turns with a wrench and the connection is complete.... Average time: 30 seconds!
- **Every Joint is a Union** - The pipe joint can be easily disassembled for cleaning or repairs.
- **Flexible** - The resilient Dresser gasket provides permanent flexibility and provides pipeline protection from vibration and expansion-contraction movements.
- **Saves Money** - Style 65 compression fittings save time and money by assembling quickly onto the pipe with no threading, flaring or exact pipe fitting required.
- **Proven Working Principle** - Dresser compression fittings have been used in connecting and sealing pipe joints for many years. They employ the same sealing principle that was developed by Dresser in 1891.

Dresser® Style 65 bodies are made of either steel or malleable iron. All coupling and fitting bodies constructed of malleable iron conform to ANSI specifications for 150 psi rated fittings. The gasket retainer ring is made of steel.

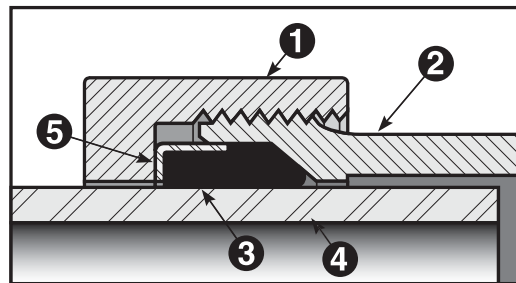
Dresser Grade 27 ARMORED® gaskets are supplied as standard, with Grade 42 ARMORED oil resistant gaskets available for special applications.

Regular Style 65 couplings and fittings should not be used for temperatures over 150° F. For temperatures above 150° F. and up to 350° F., Style 165 Plus-Temp™ couplings and fittings are recommended.



### Style 65 Components

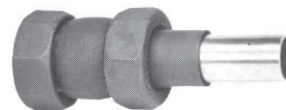
Illustrated below is a Dresser® Style 65 coupling in cut-away section to show the working principle.



Threaded end-nuts (1) screw onto the threaded body (2), compressing the gaskets (3) against the pipe (4) to make a flexible, bottle-tight seal. Note the heavy body construction and ample seating area of the resilient gasket. Note also the manner in which the gasket is confined and protected from damage by the retainer ring (5).

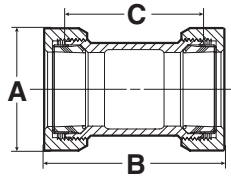
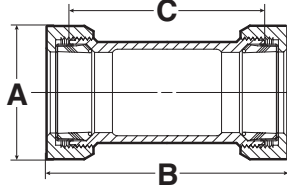
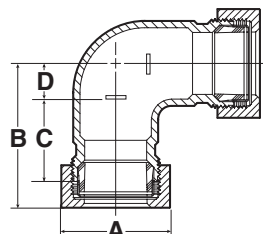
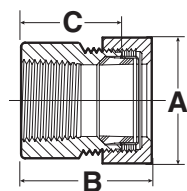
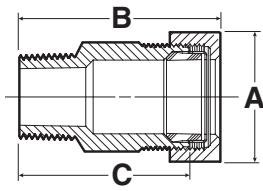
### Insulating Adapters

Insulating Adapter Gaskets are used with Style 65 couplings to insulate between dissimilar metals to prevent galvanic corrosion, or to break current flow along the pipe. Gasket sleeves are particularly convenient when connecting steel pipe and copper tubing of the same nominal size.



# Style 65 Compression Couplings & Fittings

## SIZE SPECIFICATIONS

Nominal Size Steel (In.)	Outside Diameter (O.D.) (In.)	PART NUMBER Dresser E-Coat (001) Galvanized (003)	Overall Dimensions				Dimension Drawings
			A	B	C	D	
<b>REGULAR COUPLINGS</b>							
1/2	.840	0065-0002-001(003)	1-17/32	2-5/8	2	--	
3/4	1.050	0065-0003-001(003)	1-27/32	2-21/32	2	--	
1	1.315	0065-0004-001(003)	2-3/16	2-13/16	2-1/4	--	
1-1/4	1.660	0065-0005-001(003)	2-5/8	3-1/4	2-1/2	--	
1-1/2	1.900	0065-0006-001(003)	2-15/16	3-9/16	2-3/4	--	
2	2.375	0065-0007-001(003)	3-19/32	3-7/8	3	--	
<b>LONG COUPLINGS</b>							
1/2	.840	0065-0030-001(003)	1-17/32	4-1/8	3-1/2	--	
3/4	1.050	0065-0031-001(003)	1-27/32	4-13/32	3-3/4	--	
1	1.315	0065-0032-001(003)	2-3/16	4-11/16	4	--	
1-1/4	1.660	0065-0033-001(003)	2-5/8	5	4-1/4	--	
1-1/2	1.900	0065-0034-001(003)	2-15/16	5-3/16	4-1/2	--	
2	2.375	0065-0035-001(003)	3-19/32	5-1/8	4-3/4	--	
<b>90° ELLS</b>							
1/2	.840	0065-0090-003	1-17/32	2-1/32	1-1/4	15/32	
3/4	1.050	0065-0091-003	1-27/32	2-5/16	1-13/32	9/16	
1	1.315	0065-0092-003	2-3/16	2-11/16	1-5/8	23/32	
1-1/4	1.660	0065-0093-003	2-15/16	3-3/32	1-27/32	7/8	
1-1/2	1.900	0065-0094-003	2-15/16	3-13/32	2	1	
2	2.375	0065-0095-003	3-19/32	3-31/32	2-9/32	1-1/4	
<b>FEMALE ADAPTERS</b>							
3/4	1.050	0065-0201-003	1-27/32	1-15/16	1-1/32	--	
1	1.315	0065-0202-003	2-3/16	2-3/16	1-5/32	--	
1-1/4	1.660	0065-0203-003	2-5/8	2-7/16	1-5/16	--	
1-1/2	1.900	0065-0204-003	2-15/16	2-19/32	1-13/32	--	
2	2.375	0065-0205-003	3-19/32	2-7/8	1-9/16	--	
<b>MALE ADAPTERS</b>							
1/2	.840	0065-0207-003	1-17/32	2-11/16	1-1/4	--	
3/4	1.050	0065-0208-003	1-27/32	2-19/32	1-1/4	--	
1	1.315	0065-0209-003	2-3/16	2-27/32	1-15/32	--	
1-1/4	1.660	0065-0210-003	2-5/8	2-11/16	1-1/8	--	
1-1/2	1.900	0065-0211-003	2-15/16	3-1/32	1-7/32	--	
2	2.375	0065-0211-003	3-19/32	3-1/16	1-3/8	--	

All dimensions are maximum, approximate and given in inches.

Gaskets included with all fittings are Dresser ARMORED®. A few services may require plain or special gaskets; priced on application.

Dimension "A" is measurement across the corner of octagonal end nut. The "across flats" dimension of nut is slightly less.

Standard finishes of e-coat and galvanized for regular and long couplings; galvanized only for 90 Ells, female and male adapters.