

# SHALLOW ESCUTCHEON

# 920-921 Series

## SPECIFICATION:

Sioux Chief 920-921 Series Trim Tite shallow escutcheon shall be used where necessary on copper or steel stub outs. Escutcheons shall be 100% corrosion proof. Escutcheon shall be molded out of a "shape-memory" material which will retain its shape and grip on tube permanently. Escutcheon shall be designed to work with either CTS or IPS tubing and be available in grey or appliance white.

Item Number  
Submitted: \_\_\_\_\_

## MATERIAL:

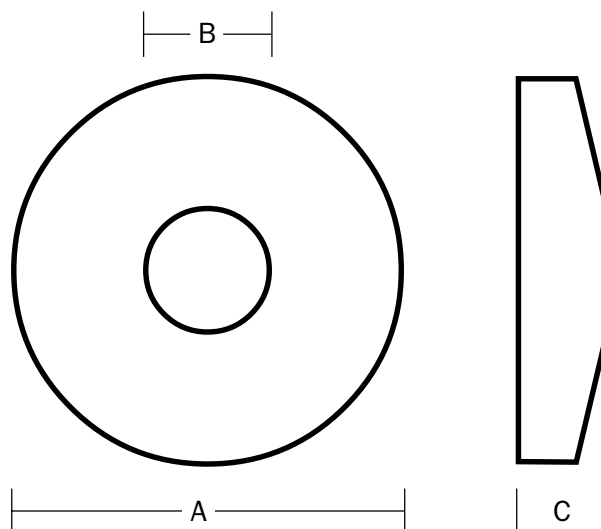
Polyethylene

## DIMENSIONS:

	920 Series	921 Series
<b>Outer Diameter A:</b>		
3/8" escutcheon:	2 1/2"	2 1/2"
1/2" escutcheon:	2 1/2"	2 1/2"
3/4" escutcheon:	2 1/2"	2 1/2"
1" escutcheon:	3 1/2"	3 1/2"
1 1/4" escutcheon:	3 1/2"	3 1/2"
1 1/2" escutcheon:	3 1/2"	3 1/2"
2" escutcheon:	3 1/2"	3 1/2"
<b>Inner Diameter B:</b>		
3/8" escutcheon:	1/2"	0.675"
1/2" escutcheon:	5/8"	0.840"
3/4" escutcheon:	7/8"	1.050"
1" escutcheon:	1 1/8"	1.315"
1 1/4" escutcheon:	1 3/8"	1.660"
1 1/2" escutcheon:	1 5/8"	1.900"
2" escutcheon:	2 1/8"	2.375"
<b>Thickness C:</b>		
3/8" escutcheon:	9/16"	1/2"
1/2" escutcheon:	9/16"	1/2"
3/4" escutcheon:	9/16"	1/2"
1" escutcheon:	9/16"	9/16"
1 1/4" escutcheon:	9/16"	9/16"
1 1/2" escutcheon:	9/16"	9/16"
2" escutcheon:	9/16"	9/16"



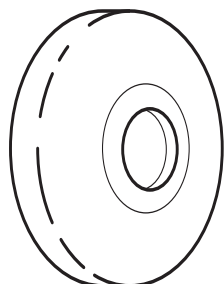
**TRIM TITE™**  
920-2W shown



## Create Item Number Below

### A-B-C

e.g. 920-2W = An appliance white escutcheon for 1/2" CTS tube.



#### A Tubing Type

- 920** = CTS tube
- 921** = IPS tube

#### B Tubing Size

- 1** = 3/8" CTS or IPS
- 2** = 1/2" CTS or IPS
- 3** = 3/4" CTS or IPS
- 4** = 1" CTS or IPS
- 5\*** = 1 1/4" IPS only
- 6\*** = 1 1/2" IPS only
- 7\*** = 2" IPS only

#### C Escutcheon Color

- G** = Medium Grey
- W** = Appliance White

\* Available only in 921 Series for IPS