

5

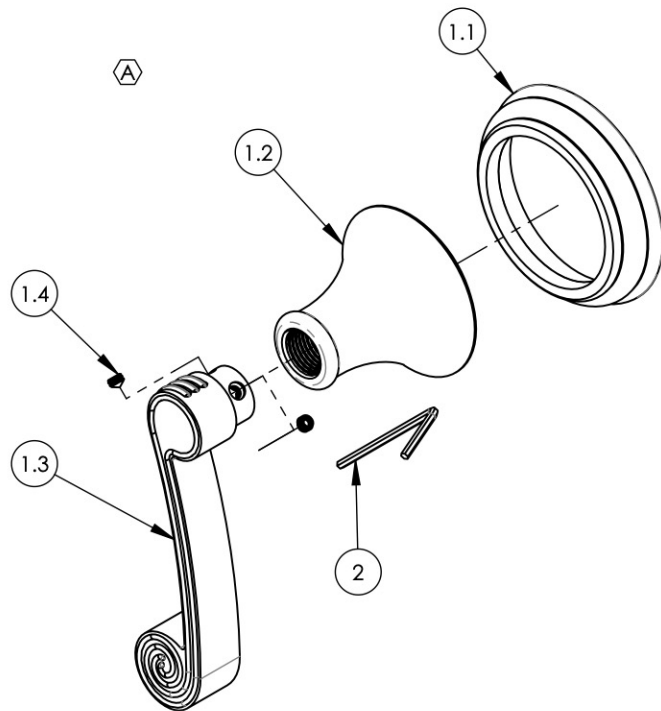
4

3

2

1

ITEM NO.	PART NUMBER	DESCRIPTION	QTY.
1	3-477/00	ASSY. RIGHT CURVED LEVER HANDLE, 3 RING SERIES	1
1.1	11188/00	ESCUTCHEON, HANDLE BASE 3RING	1
1.2	10972/00	HUB, TRANSITIONAL 3RING	1
1.3	P01080	3 RING CURVED HANDLE, RIGHT	1
1.4	92163	SET SCREW, CONE PT 8-32 X 1/8"L	2
2	P39001	HEX KEY 5/64, FOR 8-32 SET SCREW	1



ALL	REV.	DESCRIPTION	DATE	APPROVED
A		UPATE TEMPLATE, ADD HANLDE ASSY	4/14/2020	AMM
REVISIONS				

1261 LOGAN AVENUE
COSTA MESA, CALIFORNIA 92626
PHONE: 714.361.4800
FAX: 714.617.3120

PHYLIRICH[®]
Defining Luxury Since 1959

PROPRIETARY AND CONFIDENTIAL

THE INFORMATION CONTAINED IN THIS DRAWING IS THE SOLE PROPERTY OF PHYLIRICH. ANY REPRODUCTION IN PART OR AS A WHOLE WITHOUT THE WRITTEN PERMISSION OF PHYLIRICH IS PROHIBITED.

-	-	INTERPRET GEOMETRIC DIMENSIONING & TOLERANCING IN ACCORDANCE WITH ASME Y14.5-2009 & ASME Y14.41-2003 STANDARDS, UNLESS OTHERWISE SPECIFIED. DIMENSIONS ARE IN INCHES. TOLERANCES ARE:		
-	-			
-	-			
NEXT ASSY	USED ON	FRACTIONS ±1/16"	DECIMALS X.X: ±.1 X.XX: ±.01 X.XXX: ±.005	ANGULAR ±2°
APPLICATION				
MATERIAL			NAME	DATE
FINISH		DRAWN	CA	9/20/2013
DO NOT SCALE DRAWING		CHECKED		

VOLUME CONTROL / DIV. TRIM 3RING SERIES, CURVED LEVER (205-36/00)

SIZE **A** ASM/PRT NO. **D2PV206A/00** REV **A**

SCALE: 1:2 WEIGHT: lbs. SHEET 1 OF 1

5

4

3

2

1