

SUPPLY

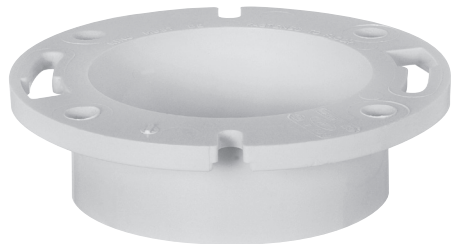
DRAINAGE

SUPPORT

APPENDIX



887-PM



886-4P

All models UPC listed except 3" inside fit models. cUPC where indicated



## Open Closet Flange

### Stainless Steel Swivel Ring

- Corrosion-resistant 430 stainless steel swivel ring is engineered for maximum strength

### One-Piece Plastic

- Solid ABS or PVC

PVC Item No	ABS Item No	Connection	Pkg	Min Qty	Case Qty
<b>ONE-PIECE PLASTIC RING</b>					
888-P	888-A	3" inside fit <sup>1</sup>	B*	20	20
888-PPK	888-APK	3" inside fit <sup>1</sup>	C*	10	10
886-P	886-A	3" hub/inside 4", flush to floor <sup>1</sup>	B*	20	20
886-PPK	886-APK	3" hub/inside 4", flush to floor <sup>1</sup>	C*	10	10
886-4P	886-4A	4" hub, flush to floor	B*	25	25
886-4PPK	886-4APK	4" hub, flush to floor	C*	6	6
886-4PS	—	4" spigot, flush to floor	B*	25	25
<b>STAINLESS STEEL SWIVEL RING</b>					
888-PM	888-AM	3" inside fit, 4" long tailpiece <sup>1</sup>	B*	12	12
887-PM	887-AM	3" hub/inside 4", flush to floor <sup>1</sup>	B*	25	25
886-4PM	886-4AM	4" hub, flush to floor	B*	25	25
886-4PMSPK	886-4AMSPK	4" spigot, flush to floor	C*	6	6

<sup>1</sup> The inside diameter of pipe can vary significantly. These flanges are designed to fit inside most, but may not fit all types of pipe.

## Full Flush™

### Offset Closet Flange

- Full-flow, 3" I.D. throat – no restriction
- Allows for 1½" offset in any direction for closet bowl setting
- Corrosion-resistant 430 stainless steel swivel ring is engineered for maximum strength



889-POM



889-POTM



889-GPOM



Full Flush™ is the only offset closet flange that will allow a 3" ball to pass freely – no obstructions.

PVC Item No	ABS Item No	Connection	Pkg	Min Qty	Case Qty
<b>OPEN FLANGE</b>					
889-POM	889-AOM	3" hub/inside 4", flush to floor <sup>1</sup>	B*	20	20
889-POMPK	889-AOMPK	3" hub/inside 4", flush to floor <sup>1</sup>	C*	6	6
889-GPOM	889-GAOM	Inside 4" gasket fit	B*	4	4
<b>WITH KNOCKOUT</b>					
889-POTM	889-AOTM	3" hub/inside 4", flush to floor <sup>1</sup>	B*	20	20

<sup>1</sup> The inside diameter of pipe can vary significantly. These flanges are designed to fit inside most, but may not fit all types of pipe.