

Tub & Shower Repair Bañera y Ducha Reparación

- Featuring a comprehensive line of tub spouts, single lever escutcheons, shower heads, tub repair accessories, and more

Con una línea completa de caños de tina, escudos monomando, cabezales de ducha, accesorios de reparación de bañera, y más

- Parts are organized by application and faucet manufacturer

Las piezas están organizadas por la aplicación y el grifo fabricante

	Products compliant with federal and state drinking water legislation.
	Identifies water-efficient products and programs that meet WaterSense® water efficiency and performance criteria. Products carrying the WaterSense® label perform well, help save money, and encourage innovation in manufacturing.
	See what's new since our March 2011 Catalog!
	Signifies compliance with The Americans with Disabilities Act (ADA)

MIXET®

TUB SPOUTS

CONSERVE WATER AND MONEY WITH MIXET SPOUTS

POSITIVE ACTION SHUT-OFF Diverter Spouts #71, #73, #81 and #83 Series

Now more than ever, water has become a precious commodity that needs to be conserved. National, regional and local building codes mandate the use of flow restricted shower heads to 2.5 G.P.M. @ 80psi. Most tub diverter spouts have a simple lift gate that diverts the flow of water to the shower head. Unfortunately, higher water pressure causes some water to flow directly through the tub spout, instead of the shower head. The result is wasted water and wasted energy to heat that water, which is like pouring money down the drain. START conserving water and money TODAY with Mixet Positive Action shut-off diverter spouts. These water pressure activated diverter spouts are available in both Quikspout® slip-on and iron pipe fit diverter applications and offer many great features. (Check out those features below.)

QUIKLIFT® Diverter Spouts #61 and #64

The Quiklift® diverter spouts feature a top-pull knob with gravity-assisted return. These spouts are available in both slip-on and iron pipe fit diverter applications.

TUB FILLER Spouts #70, #72, #80 and #82 Series

These tub filler spouts are available in both Quikspout® slip-on and iron pipe fit applications

All Mixet Diverter Tub Spouts offer the following features:

- CSA certified - B125.1
- Meet requirement of withstanding an operating supply pressure of 125 PSI (862kPa)
- Meet or exceed ANSI/ASME A112.181
- Comply with section 1601-1608, Title 20 of California Energy Commission Appliance Efficiency Regulations
- 1/2"-14 NPSM connection point for iron pipe fit applications
- Available in bagged, carded or clamshell packaging

POSITIVE SHUT-OFF
SHOWER DIVERTER.
AUTOMATICALLY CLOSES WHEN
WATER IS TURNED OFF.

FULLY ADJUSTABLE. MORE THAN
1 INCH INSTALLATION TOLERANCE

QUIKSPOUT® INLET
CONNECTION
FOR STUB-OUT

ZINC DIE-CAST
OUTER SHELL

O-RING SEAL

SPRING ACTIVATED
SEALING WASHER

NON-CORROSIVE HIGH
STRENGTH PLASTIC LINER

O-RING SEALS

PRESSURE SCREW CLAMP.
TIGHTENING SCREW CLAMPS
QUIKSPOUT® FIRMLY
AROUND STUB-OUT.



BATH ACCESSORIES

NON OEM	ITEM	PKG
	SW0300	1 Per Card



- Bath Strainers for Gerber Faucets
- 2-1/2" OD
- Finish: Chrome
- Material: Stainless Steel

BATH ACCESSORIES

NON OEM	ITEM	PKG
	SW0301	1 Per Card



- Bath Strainers for Gerber Faucets
- 2-1/2" OD
- Finish: PVD Satin Nickel
- Material: Stainless Steel

BATH ACCESSORIES

NON OEM	ITEM	PKG
	SW2000	1 Set Per Slide Card



- Bathtub Lift & Turn Drain and Drain Overflow Face Plate
- Single-Hole Round Face Plate
- For 1-7/8" to 2-1/4" Drains
- Stopper: 2-3/4" OD and Faceplate: 3-1/8" OD
- Finish: Chrome
- Material: Aluminum, Rubber, and Zinc
- Includes (1) Bathtub Lift & Turn Drain, (1) Bathtub Drain Washer, (1) Drain Overflow Face Plate, (1) Bracket, and (1) Screw

BATH ACCESSORIES

NON OEM	ITEM	PKG
	SW2001	1 Set Per Slide Card



- Bathtub Lift & Turn Drain and Drain Overflow Face Plate
- Single-Hole Round Face Plate
- For 1-7/8" to 2-1/4" Drains
- Stopper: 2-3/4" OD and Faceplate: 3-1/8" OD
- Finish: Polished Brass
- Material: Aluminum, Rubber, and Zinc
- Includes (1) Bathtub Lift & Turn Drain, (1) Bathtub Drain Washer, (1) Drain Overflow Face Plate, (1) Bracket, and (1) Screw

BATH ACCESSORIES

NON OEM	ITEM	PKG
	SW2002	1 Set Per Slide Card



- Bathtub Lift & Turn Drain and Drain Overflow Face Plate
- Single-Hole Round Face Plate
- For 1-7/8" to 2-1/4" Drains
- Stopper: 2-3/4" OD and Faceplate: 3-1/8" OD
- Finish: PVD Satin Nickel
- Material: Aluminum, Rubber, and Zinc
- Includes (1) Bathtub Lift & Turn Drain, (1) Bathtub Drain Washer, (1) Drain Overflow Face Plate, (1) Bracket, and (1) Screw

BATH ACCESSORIES

NON OEM	ITEM	PKG
	SW2011	1 Per Slide Card



- Bathtub Lift & Turn Drain
- For 1-7/8" to 2-1/4" Drains
- 2-3/4" OD
- Finish: Polished Brass
- Material: Rubber and Zinc
- Includes (1) Bathtub Lift & Turn Drain, and (1) Bathtub Drain Washer

BATH ACCESSORIES

NON OEM	ITEM	PKG
	SW2012	1 Per Slide Card



- Bathtub Lift & Turn Drain
- For 1-7/8" to 2-1/4" Drains
- 2-3/4" OD
- Finish: PVD Satin Nickel
- Material: Rubber and Zinc
- Includes (1) Bathtub Lift & Turn Drain, and (1) Bathtub Drain Washer
- Available in SK0236 B and SK0288 B


BATH ACCESSORIES

NON OEM	ITEM	PKG
	SW2016	1 Set Per Card



- Bathtub Drain Overflow Face Plate
- Single-Hole Round Face Plate
- 3-1/8" OD
- Finish: PVD Satin Nickel
- Material: Aluminum, Stainless Steel, and Zinc
- Includes (1) Drain Overflow Face Plate, (1) Bracket, and (1) Screw
- Available in SK0236 B and SK0288 B


ESCUTCHEONS

OEM	ITEM	PKG	REF #
 DELTA GENUINE PARTS	SWD0201	1 Per Bag	RP21633



- Delta Escutcheon
- For Single Handle Faucets
- Monitor® 1300, 1400, and 1700 Series
- 6-3/4" OD
- Finish: Chrome
- Material: Brass


ESCUTCHEONS

OEM	ITEM	PKG	REF #
 DELTA GENUINE PARTS	SWD0221	1 Per Bag	RP5883



- Delta Escutcheon
- For Single Handle Faucets
- 600/1600 Series
- 6-3/4" OD
- Finish: Chrome
- Material: Brass
- Available in SKD0095 D

ESCUTCHEONS

OEM	ITEM	PKG	REF #
 DELTA GENUINE PARTS	SWD0228	1 Per Bag	RP6046



- Delta Escutcheon
- For Single Handle Faucets
- 600 Series Push Button Diverter
- 6-3/4" OD
- Finish: Chrome
- Material: Brass

ESCUTCHEONS

OEM	ITEM	PKG	REF #
MIXET™	SWD0400 D	1 Per Slide Card	
	SWD0400	1 Per Bag	MLF



- Mixet Escutcheon
- For Single Handle Faucets
- For Non-Pressure Balance Valves
- 4-1/2" OD
- Finish: Chrome
- Material: Stainless Steel
- Available in SKD0207 and SKD0218

ESCUTCHEONS

OEM	ITEM	PKG	REF #
MIXET®	SWD0401	1 Per Bag	MDF-5 1/2



- Mixet Escutcheon
- For Single Handle Faucets
- Deep Escutcheon For Non-Pressure Balance Valves
- 5-1/2"OD
- Finish: Chrome
- Material: Steel

ESCUTCHEONS

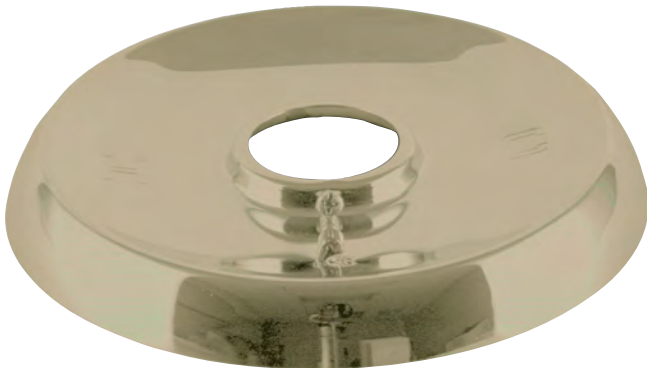
OEM	ITEM	PKG	REF #
MIXET®	SWD0402 D	1 Per Slide Card	
	SWD0402	1 Per Bag	MLF-5 1/2



- Mixet Escutcheon
- For Single Handle Faucets
- For Non-Pressure Balance Valves
- 5-1/2"OD
- Finish: Chrome
- Material: Stainless Steel
- Available in SKD0200, SKD0201 D, SKD0210, SKD0212, SKD0212, SKD0216, and SKD0224

ESCUTCHEONS

OEM	ITEM	PKG	REF #
MIXET®	SWD0403	1 Per Bag	MLF-5 1/2PB



- Mixet Escutcheon
- For Single Handle Faucets
- For Non-Pressure Balance Valves
- 5-1/2"OD
- Finish: Polished Brass
- Material: Stainless Steel
- Available in SKD0213 and SKD0215

ESCUTCHEONS

OEM	ITEM	PKG	REF #
MIXET®	SWD0404	1 Per Bag	MVF-5 1/2



- Mixet Escutcheon
- For Single Handle Faucets
- Shallow Escutcheon (for deep rough-in) for Non-Pressure Balance Valves
- 5-1/2"OD
- Finish: Chrome
- Material: Stainless Steel

ESCUTCHEONS

OEM	ITEM	PKG	REF #
MIXET	SWD0405	1 Per Bag	MLF-7



- Mixet Escutcheon
- For Single Handle Faucets
- Escutcheon for Pressure Balance Valves
- 7-1/2"OD
- Finish: Stainless Steel
- Material: Stainless Steel
- Available in SKD0220, SKD0221, SKD0222, and SKD0223

ESCUTCHEONS

OEM	ITEM	PKG	REF #
MIXET	SWD0452	1 Per Bag	MLF-5 1/S SN



- Mixet Escutcheon
- For Single Handle Faucets
- For Non-Pressure Balance Valves
- 5-1/2"OD
- Finish: PVD Satin Nickel
- Material: Stainless Steel
- Available in SKD0202, SKD0203, SKD0204, and SKD0217

SHOWER HEADS

OEM	ITEM	PKG	REF #
DELTA GENUINE PARTS	SWD0209 D	1 Per Clamshell	
	SWD0209	1 Per Bag	RP28599



- Delta Shower Head
- Push Clean Feature with Brass Nut
- 2.0 GPM Max Flow Rate
- Finish: Chrome

SHOWER HEADS

OEM	ITEM	PKG	REF #
MIXET	SWD0413	1 Per Bag	5300 BULK



- Mixet Shower Head
- Full Spray
- 2.5 GPM Max Flow Rate
- Finish: Chrome
- Material: Brass, Plastic, and Stainless Steel
- Includes (1) Shower Head, (1) Shower Arm, and (1) Flange

SHOWER HEADS

OEM	ITEM	PKG	REF #
MIXET®	SWD0414	1 Set Per Bag	5400 Bulk



- Mixet Shower Head
- Adjustable Spray
- 2.5 GPM Max Flow Rate
- Finish: Chrome
- Material: Brass, Plastic, and Stainless Steel
- Includes (1) Shower Head, (1) Shower Arm, and (1) Flange

SHOWER HEADS

OEM	ITEM	PKG	REF #
MIXET®	SWD0415	1 Per Bag	5400 H/O



- Mixet Shower Head
- Adjustable Spray
- 2.5 GPM Max Flow Rate
- Finish: Chrome
- Material: Plastic

SHOWER HEADS

OEM	ITEM	PKG	REF #
MIXET®	SWD0416	1 Per Bag	5600 H/O



- Mixet Shower Head
- 4-Spray Setting with Brass Ball
- 2.5 GPM Max Flow Rate
- Finish: Chrome
- Material: Brass and Plastic

SHOWER HEADS

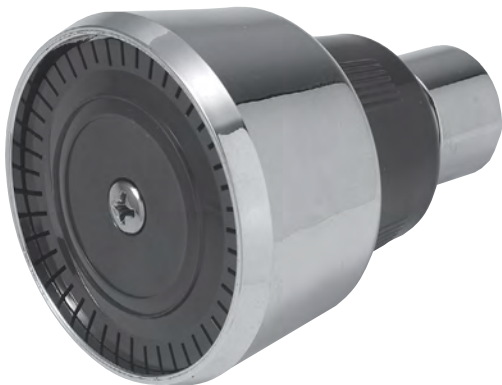
OEM	ITEM	PKG	REF #
MIXET®	SWD0417	1 Per Bag	5653 BULK



- Mixet Shower Head
- Full Spray
- 2.5 GPM Max Flow Rate
- Finish: Chrome
- Material: Brass, Plastic, and Stainless Steel
- Includes (1) Shower Head, (1) Shower Arm, and (1) Flange
- Available in SKD0200

SHOWER HEADS

OEM	ITEM	PKG	REF #
MIXET™	SWD0419 D	1 Per Slide Card	
	SWD0419	1 Per Bag	5653 H/O



- Mixet Shower Head
- Full Spray
- 2.5 GPM Max Flow Rate
- Finish: Chrome
- Material: Brass and Plastic

SHOWER HEADS

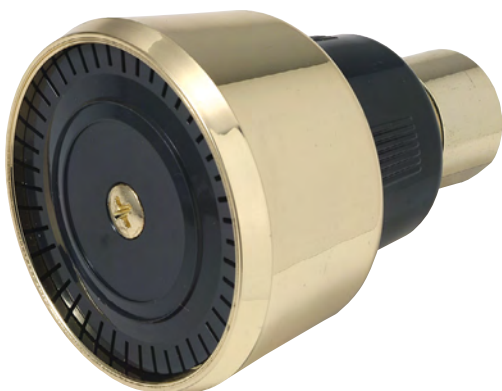
OEM	ITEM	PKG	REF #
MIXET™	SWD0420	1 Per Bag	5653 PB BULK



- Mixet Shower Head
- Full Spray
- 2.5 GPM Max Flow Rate
- Finish: Polished Brass
- Material: Brass, Plastic, and Stainless Steel
- Includes (1) Shower Head, (1) Shower Arm, and (1) Flange

SHOWER HEADS

OEM	ITEM	PKG	REF #
MIXET™	SWD0421	1 Per Bag	5653 PB H/O



- Mixet Shower Head
- Full Spray
- 2.5 GPM Max Flow Rate
- Finish: Polished Brass
- Material: Brass and Plastic

SHOWER HEADS

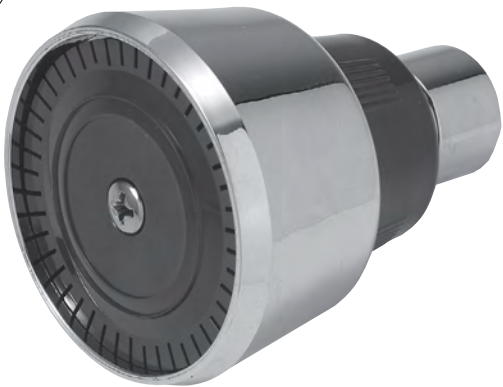
OEM	ITEM	PKG	REF #
MIXET™	SWD0455	1 Set Per Box	5653 SN



- Mixet Shower Head, Arm, & Flange
- Full Spray
- 2.5 GPM Max Flow Rate
- Finish: PVD Satin Nickel
- Material: Brass, Plastic, and Stainless Steel
- Includes (1) Shower Head, (1) Shower Arm, and (1) Flange
- Available in SKD0201

SHOWER HEADS

OEM	ITEM	PKG	REF #
MIXET™	SWD0470 D	1 Per Slide Card	
	SWD0470	1 Per Bag	5653 WS



- Mixet Shower Head
- Full Spray
- 2.0 GPM Max Flow Rate
- Finish: Chrome
- Material: Brass and Plastic

TUB SPOUTS

OEM	ITEM	PKG	REF #
DELTA GENUINE PARTS	SWD0205 D	1 Per Slide Card	
	SWD0205	1 Per Bag	RP17453



- Delta Diverter Tub Spouts
- Pull Down Diverter Feature
- Fits 1/2" Nominal (5/8" OD) Slip-On or 1/2" Pipe Thread
- 6-1/8" Length
- Finish: Chrome
- Includes Adaptor

TUB SPOUTS

OEM	ITEM	PKG	REF #
DELTA GENUINE PARTS	SWD0220 D	1 Per Slide Card	
	SWD0220	1 Per Bag	RP5834



- Delta Diverter Tub Spouts
- Fits 1/2" Iron Pipe
- 5-5/8" Length
- Finish: Chrome

TUB SPOUTS

OEM	ITEM	PKG	REF #
DELTA GENUINE PARTS	SWD0204	1 Per Bag	RP5836



- Delta Diverter Tub Spouts
- Fits 1/2" Nominal (5/8" OD) Slip-On
- 6" Length
- Finish: Chrome

TUB SPOUTS

OEM	ITEM	PKG	REF #
MIXET™	SWD0448 D	1 Per Slide Card	
	N/A	Bag	51



- Mixet Diverter Tub Spouts
- Fits 1/2" Nominal (5/8" OD) Slip-On or 1/2" or 3/4" Pipe Thread
- 5-1/8" Length
- Finish: Chrome
- Material: Zinc, Plastic, and Brass
- Available in SKD0200

TUB SPOUTS

OEM	ITEM	PKG	REF #
MIXET™	SWD0450 D	1 Per Slide Card	
	N/A	Bag	51 SN



- Mixet Diverter Tub Spouts
- Fits 1/2" Nominal (5/8" OD) Slip-On or 1/2" or 3/4" Pipe Thread
- 5-1/8" Length
- Finish: PVD Satin Nickel
- Material: Zinc, Plastic, and Brass
- Available in SKD0201

TUB SPOUTS

OEM	ITEM	PKG	REF #
MIXET™	SWD0422 D	1 Per Slide Card	
	SWD0422	1 Per Bag	61



- Mixet Quiklift® Diverter Tub Spouts
- Fits 1/2" Nominal (5/8" OD) Slip-On
- 5-1/8" Length
- Finish: Chrome
- Material: Zinc

TUB SPOUTS

OEM	ITEM	PKG	REF #
MIXET™	SWD0423	1 Per Bag	61 PB Bulk



- Mixet Quiklift® Diverter Tub Spouts
- Fits 1/2" Nominal (5/8" OD) Slip-On
- 5-1/8" Length
- Finish: Polished Brass
- Material: Zinc

TUB SPOUTS

OEM	ITEM	PKG	REF #
MIXET®	SWD0424	1 Per Bag	64 Bulk



- Mixet Quiklift® Diverter Tub Spouts
- Fits 1/2" Iron Pipe
- 5-1/8" Length
- Finish: Chrome
- Material: Zinc
- Thread at Nose End

TUB SPOUTS

OEM	ITEM	PKG	REF #
MIXET®	SWD0425	1 Per Bag	64 PB Bulk



- Mixet Quiklift® Diverter Tub Spouts
- Fits 1/2" Iron Pipe
- 5-1/8" Length
- Finish: Polished Brass
- Material: Zinc
- Thread at Nose End

TUB SPOUTS

OEM	ITEM	PKG	REF #
MIXET®	SWD0411 D	1 Per Slide Card	71
	SWD0411	1 Per Bag	
	MXT01	1 Per Slide Card	



- Mixet Diverter Tub Spouts
- Fits 1/2" Nominal (5/8" OD) Slip-On. Quikspout®
- 5-1/8" Length
- Finish: Chrome
- Material: Zinc
- Positive Action Shut-Off Feature

TUB SPOUTS

OEM	ITEM	PKG	REF #
MIXET®	SWD0428	1 Per Bag	71 AB Bulk



- Mixet Diverter Tub Spouts
- Fits 1/2" Nominal (5/8" OD) Slip-On. Quikspout®
- 5-1/8" Length
- Finish: Antique Brass
- Material: Zinc
- Positive Action Shut-Off Feature

TUB SPOUTS

OEM	ITEM	PKG	REF #
MIXET™	SWD0429	1 Per Bag	71 PB Bulk



- Mixet Diverter Tub Spouts
- Fits 1/2" Nominal (5/8" OD) Slip-On. Quikspout®
- 5-1/8" Length
- Finish: Polished Brass
- Material: Zinc
- Positive Action Shut-Off Feature

TUB SPOUTS

OEM	ITEM	PKG	REF #
MIXET™	SWD0451	1 Per Box	71 SN



- Mixet Diverter Tub Spouts
- Fits 1/2" Nominal (5/8" OD) Slip-On. Quikspout®
- 5-1/8" Length
- Finish: PVD Satin Nickel
- Material: Zinc, Plastic, and Brass
- Positive Action Shut-Off Feature

TUB SPOUTS

OEM	ITEM	PKG	REF #
MIXET™	SWD0406 D	1 Per Slide Card	73
	SWD0406	1 Per Bag	
	MXT02	1 Per Slide Card	



- Mixet Diverter Tub Spouts
- Fits 1/2" and 3/4" Iron Pipe
- 5-1/8" Length
- Finish: Chrome
- Material: Zinc
- Positive Action Shut-Off Feature

TUB SPOUTS

OEM	ITEM	PKG	REF #
MIXET™	SWD0431	1 Per Bag	73 PB Bulk



- Mixet Diverter Tub Spouts
- Fits 1/2" and 3/4" Iron Pipe
- 5-1/8" Length
- Finish: Polished Brass
- Material: Zinc
- Positive Action Shut-Off Feature

TUB SPOUTS

OEM	ITEM	PKG	REF #
MIXET®	SWD0407 D	1 Per Slide Card	
	SWD0407	1 Per Bag	81



- Mixet Diverter Tub Spouts
- Fits 1/2" Nominal (5/8" OD) Slip-On. Quikspout®
- 6-1/2" Length
- Finish: Chrome
- Material: Zinc
- Positive Action Shut-Off Feature

TUB SPOUTS

OEM	ITEM	PKG	REF #
MIXET®	SWD0433	1 Per Bag	81 PB



- Mixet Diverter Tub Spouts
- Fits 1/2" Nominal (5/8" OD) Slip-On. Quikspout®
- 6-1/2" Length
- Finish: Polished Brass
- Material: Zinc
- Positive Action Shut-Off Feature

TUB SPOUTS

OEM	ITEM	PKG	REF #
MIXET®	SWD0436	1 Per Bag	83 BX



- Mixet Diverter Tub Spouts
- Fits 1/2" and 3/4" Iron Pipe
- 6-1/2" Length
- Finish: Chrome
- Material: Zinc
- Positive Action Shut-Off Feature

TUB SPOUTS

OEM	ITEM	PKG	REF #
MIXET®	SWD0447 D	1 Per Slide Card	
	N/A	Bag	50



- Mixet Tub Filler Spouts
- Fits 1/2" Nominal (5/8" OD) Slip-On or 1/2" or 3/4" Pipe Thread
- 5-1/8" Length
- Finish: Chrome
- Material: Zinc

TUB SPOUTS

OEM	ITEM	PKG	REF #
MIXET™	SWD0449 D	1 Per Slide Card	
	N/A	Bag	50 SN



- Mixet Tub Filler Spouts
- Fits 1/2" Nominal (5/8" OD) Slip-On or 1/2" or 3/4" Pipe Thread
- 5-1/8" Length
- Finish: PVD Satin Nickel
- Material: Zinc, Plastic, and Brass

TUB SPOUTS

OEM	ITEM	PKG	REF #
MIXET™	SWD0412 D	1 Per Clamshell	
	SWD0412	1 Per Bag	72



- Mixet Tub Filler Spouts
- Fits 1/2" Nominal (5/8" OD) Slip-On. Quikspout®
- 5-1/8" Length
- Finish: Chrome
- Material: Zinc

TUB SPOUTS

OEM	ITEM	PKG	REF #
MIXET™	SWD0426	1 Per Bag	70 Bulk



- Mixet Tub Filler Spouts
- Fits 1/2" Iron Pipe
- 5-1/8" Length
- Finish: Chrome
- Material: Zinc
- Thread at Nose End

TUB SPOUTS

OEM	ITEM	PKG	REF #
MIXET™	SWD0430	1 Per Bag	72 PB Bulk



- Mixet Tub Filler Spouts
- Fits 1/2" Nominal (5/8" OD) Slip-On. Quikspout®
- 5-1/8" Length
- Finish: Polished Brass
- Material: Zinc

TUB SPOUTS

OEM	ITEM	PKG	REF #
MIXET®	SWD0432	1 Per Bag	80 BX



- Mixet Tub Filler Spouts
- Fits 1/2" Iron Pipe
- 6-1/2" Length
- Finish: Chrome
- Material: Zinc
- Thread at Nose End

TUB SPOUTS

OEM	ITEM	PKG	REF #
MIXET®	SWD0434	1 Per Bag	82 BX



- Mixet Tub Filler Spouts
- Fits 1/2" Nominal (5/8" OD) Slip-On. Quikspout®
- 6-1/2" Length
- Finish: Chrome
- Material: Zinc

TUB SPOUTS

OEM	ITEM	PKG	REF #
MIXET®	SWD0435	1 Per Bag	82 PB BX



- Mixet Tub Filler Spouts
- Fits 1/2" Nominal (5/8" OD) Slip-On. Quikspout®
- 6-1/2" Length
- Finish: Polished Brass
- Material: Zinc

TUB SPOUTS

NON OEM	ITEM	PKG
	SW2100	1 Per Slide Card



- Tub Filler Spout Universal Fit
- Fits 1/2" Nominal (5/8" OD) Slip-On or 1/2" or 3/4" Pipe Thread
- 5-1/8" Length
- Finish: Chrome
- Material: Zinc, Plastic, and Brass

TUB SPOUTS

NON OEM	ITEM	PKG
	SW2101	1 Per Slide Card



- Diverter Tub Spout Universal Fit
- Fits 1/2" Nominal (5/8" OD) Slip-On or 1/2" or 3/4" Pipe Thread
- 5-3/8" Length
- Finish: Chrome
- Material: Zinc, Plastic, and Brass
- Available in SK0239 B

TUB SPOUTS

NON OEM	ITEM	PKG
	SW2102	1 Per Slide Card



- Tub Filler Spout Universal Fit
- Fits 1/2" Nominal (5/8" OD) Slip-On or 1/2" or 3/4" Pipe Thread
- 5-1/8" Length
- Finish: PVD Satin Nickel
- Material: Zinc, Plastic, and Brass

TUB SPOUTS

NON OEM	ITEM	PKG
	SW2103	1 Per Slide Card



- Diverter Tub Spout Universal Fit
- Fits 1/2" Nominal (5/8" OD) Slip-On or 1/2" or 3/4" Pipe Thread
- 5-3/8" Length
- Finish: PVD Satin Nickel
- Material: Zinc, Plastic, and Brass
- Available in SK0236 B and SK0288 B

TUB SPOUTS

NON OEM	ITEM	PKG
	SW2105	1 Per Slide Card



- Diverter Tub Spout Universal Fit
- Fits 1/2" Nominal (5/8" OD) Slip-On or 1/2" Pipe Thread
- 6-1/8" Length
- Finish: Chrome
- Material: Zinc, Plastic, and Brass
- With 1/2" Pipe Thread for Personal Shower Connection

TUB SPOUTS

NON OEM	ITEM	PKG
	SW2104	1 Per Slide Card



- Diverter Tub Spouts
- Fits 1/2" Iron Pipe
- 5-3/8" Length
- Finish: Chrome
- Material: Zinc
- Thread at Nose End

TUB SPOUT REPAIR

OEM	ITEM	PKG	REF #
MIXET	SWD0440	1 Per Bag	MDB-CP



- Mixet Tub Spout Diverter Button
- Finish: Chrome
- Material: Brass

TUB SPOUT REPAIR

NON OEM	ITEM	PKG
	SW2200	1 Per Card



- Decorator Tub Spout Ring
- 2-7/8" OD
- Finish: Chrome
- Material: Zinc

VALVE REPAIR

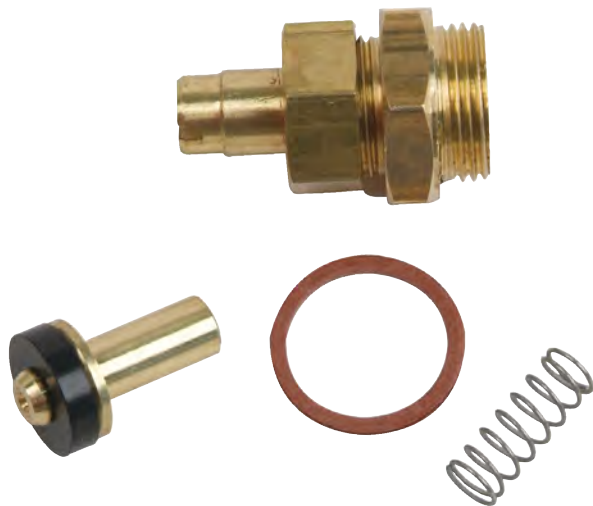
OEM	ITEM	PKG	REF #
DELTA GENUINE PARTS	SWD0227	1 Per Bag	RP5893



- Delta Sleeve
- For Single Handle Faucets
- Sleeve for 600 Series
- Finish: Chrome
- Material: Brass

VALVE REPAIR

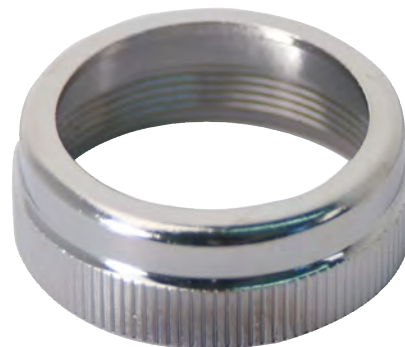
OEM	ITEM	PKG	REF #
DELTA GENUINE PARTS	SWD0229	1 Per Bag	RP2090



- Delta Check Valve Kit
- For Single Handle Faucets
- Finish: Brass
- Material: Brass

VALVE REPAIR

OEM	ITEM	PKG	REF #
DELTA GENUINE PARTS	SWD0230	1 Per Bag	RP6079



- Delta Bonnet Nut
- For Single Handle Faucets
- 1600 Series Faucets
- Finish: Chrome
- Material: Metal

VALVE REPAIR

OEM	ITEM	PKG	REF #
MIXET	SWD0408	1 Per Bag	900 Sleeve Course



- Mixet Sleeve
- For Single Handle Faucets
- Old Style
- Finish: Chrome
- Material: Brass

VALVE REPAIR

OEM	ITEM	PKG	REF #
MIXET	SWD0409 D	1 Per Card	
	SWD0409	1 Per Bag	MSRNC



- Mixet Retainer Nut
- For Single Handle Faucets
- For Non-Pressure Balance Valves
- Finish: Chrome
- Material: Brass
- Available in SKD0200

VALVE REPAIR

OEM	ITEM	PKG	REF #
MIXET®	SWD0410	1 Per Bag	MSRN-PB



- Mixet Retainer Nut
- For Single Handle Faucets
- For Non-Pressure Balance Valves
- Finish: Polished Brass
- Material: Brass
- Available in SKD0213 and SKD0215

VALVE REPAIR

OEM	ITEM	PKG	REF #
MIXET®	SWD0453	1 Per Bag	MSRN-SN



- Mixet Retainer Nut
- For Single Handle Faucets
- For Non-Pressure Balance Valves
- Finish: PVD Satin Nickel
- Material: Brass
- Available in SKD0201 D, SKD0202 D, SKD0203 D, SKD0204 D, and SKD0205 D

VALVE REPAIR

OEM	ITEM	PKG	REF #
MIXET®	SWD0441	1 Per Bag	MLSRNC



- Mixet Retainer Nut
- For Single Handle Faucets
- For Non-Pressure Balance Valves. For Long Stems.
- Finish: Chrome
- Material: Brass

VALVE REPAIR

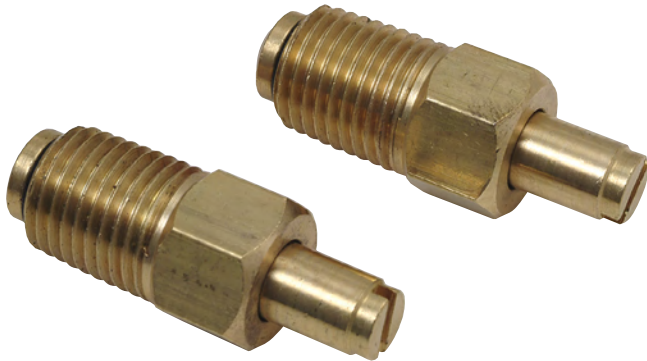
OEM	ITEM	PKG	REF #
MIXET®	SWD0438	1 Set Per Bag	MCHK



- Mixet Screwdriver Check Stops
- For Single Handle Faucets
- Finish: Brass
- Material: Brass

VALVE REPAIR

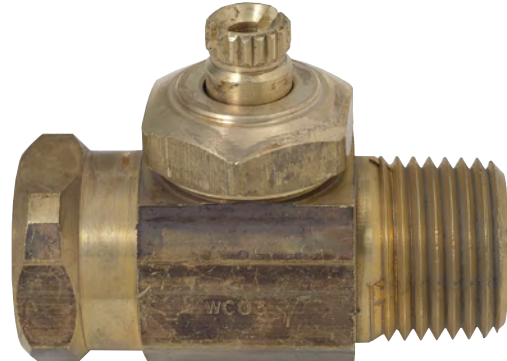
OEM	ITEM	PKG	REF #
MIXET®	SWD0439	1 Set Per Bag	MCSVS



- Mixet Concealed Stops
- For Single Handle Faucets
- Finish: Brass
- Material: Brass

VALVE REPAIR

OEM	ITEM	PKG	REF #
MIXET®	SWD0442	1 Per Bag	MSS



- Mixet Shut Off Valve
- For Single Handle Faucets
- Short Stem with Screwdriver Slot.
- 1/2" MIP x 1/2" FIP
- Finish: Brass
- Material: Brass