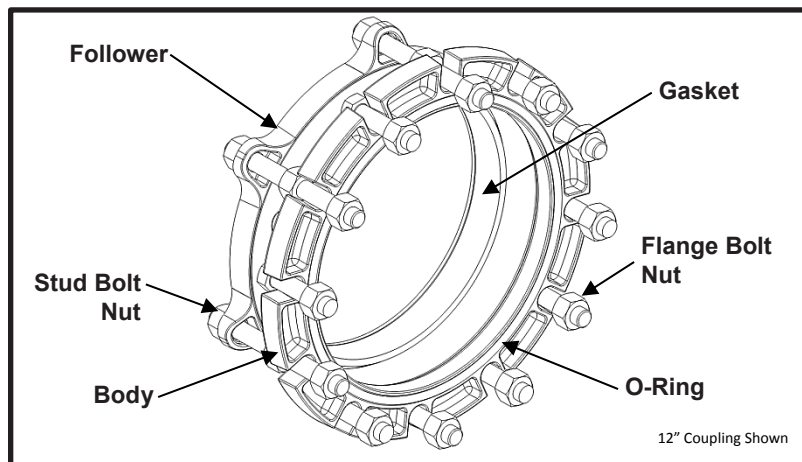


SPECIFICATION

OMNI™ CAST FLANGED COUPLING ADAPTER MODEL 912-90



APPLICATIONS

- **Typical Uses**
 - Joining plain-end pipe to flanged fittings, meters, valves, or other miscellaneous flanged service equipment
 - Replace cracked pipe or spooled flanges
- **Standard Pipe Sizes**
 - 3" to 12" nominal
- **Type of Pipe**
 - Carbon Steel, Stainless Steel, Ductile Iron, Asbestos Cement, PVC, Cast Iron
(see notes for thin wall PVC applications)
- **Working Pressure**
 - Up to 250 psi

MATERIALS

- **Follower**
 - Cast using Ductile Iron 65-45-12 per ASTM A536
 - Flexi-Coat® fusion bonded epoxy finish which meets application methods AWWA C213
 - Flanges color coded for rapid and correct installation: Red for iron pipe size, Blue for ductile, and Gray for asbestos cement
 - Permanently marked with part number and pipe size range for proper selection
- **Body**
 - Cast using Ductile Iron 65-45-12 per ASTM A536
 - Flexi-Coat® fusion bonded epoxy finish which meets application methods AWWA C213
 - Single body design for each nominal pipe size reducing inventory
 - Flange connection compatible with ANSI 125# and 150# bolt hole patterns
- **Gasket and O-ring**
 - Nitrile (Buna-N) per ASTM D2000
 - NSF/ANSI 61 and 372 certified
 - Compounded to resist water, oil, natural gas, acids, alkalies, most (aliphatic) hydrocarbon fluids, and many other chemicals
 - Temperature range: -20°F to +180°F
 - For ductile iron and asbestos cement pipe, the gaskets sealing surface has molded in ribs for maximum sealing on textured pipe
 - Gasket permanently marked with part number and pipe size range for proper selection



SPECIFICATION

OMNI™ CAST FLANGED COUPLING ADAPTER

MODEL 912-90

- **Flange Bolt**
 - Carbon Steel per ASTM A307
 - Fe/Zn coated per ASTM F1941-10
 - Size:
 - 3"-4" nominal pipe size = 5/8"-11UNC Hex Head
 - 6"-8" nominal pipe size = 3/4"-10UNC Hex Head
 - 10"-12" nominal pipe size = 7/8"-09UNC Hex Head
 - Rolled threads for improved physical characteristics, greater thread accuracy and smooth surface finish
- **Nut**
 - Carbon Steel per ASTM A307
 - Fe/Zn coated per ASTM F1941-10
 - Size:
 - 3"-4" nominal pipe size = 5/8" Heavy Hex Semi-Finished
 - 6"-8" nominal pipe size = 3/4" Heavy Hex Semi-Finished
 - 10"-12" nominal pipe size = 7/8" Heavy Hex Semi-Finished
- **Stud Bolt**
 - Carbon Steel per ASTM A193 grade B7
 - Fe/Zn coated per ASTM F1941-10
 - Size:
 - 3"-4" nominal pipe size = 5/8"-11UNC x 7" long, All Thread
 - 6"-8" nominal pipe size = 3/4"-10UNC x 8" long, All Thread
 - 10"-12" nominal pipe size = 7/8"-09UNC x 9" long, All Thread
 - Rolled threads for improved physical characteristics, greater thread accuracy and smooth surface finish

LISTINGS

- UL certified to NSF/ANSI 61 and 372
- Meets applicable AWWA C219 standards

OPTIONS

- Type 304 Stainless Steel hardware with fluoropolymer coated nuts to prevent galling
- Type 316 Stainless Steel hardware with fluoropolymer coated nuts to prevent galling
- Alternative gasket material (e.g. Buna-N, EPDM, etc.)
- Anode connector
- Anchor Studs (Pipe Restraint)
- Transition gasket for undersized pipe



SPECIFICATION

OMNI™ CAST FLANGED COUPLING ADAPTER

MODEL 912-90

NOTES

- This product **does not** restrain the pipe from pulling out of the fitting unless optional anchor studs are specified
- Pipe stiffeners **are required** when this product is used on thin wall PVC pipe
- OMNI™ is a trademark of Smith-Blair Inc.
- These product specifications were correct at the time of publication and are subject to change without notice
- See the Smith-Blair® web site for part numbers and ordering information
- See the Smith-Blair® web site for warranty information
- See the Smith-Blair® web site for corrosion warnings

Minimum 3" pipe insertion required

Total Maximum Allowable Axial Pipe Movement per Coupling

Coupling Size	Allowable Movement
3/4" to 2"	1/16"
2-1/2" to 10"	1/8"
10-3/4" and Larger	3/16"

Pipe End Tolerances

Pipe OD	Minus Tolerance	Plus Tolerance
1/2" up to 16"	-0.06	+0.06
>16" up to 24"	-0.08	+0.08
>24" up to 42"	-0.10	+0.10
>42"	-0.06	+0.12

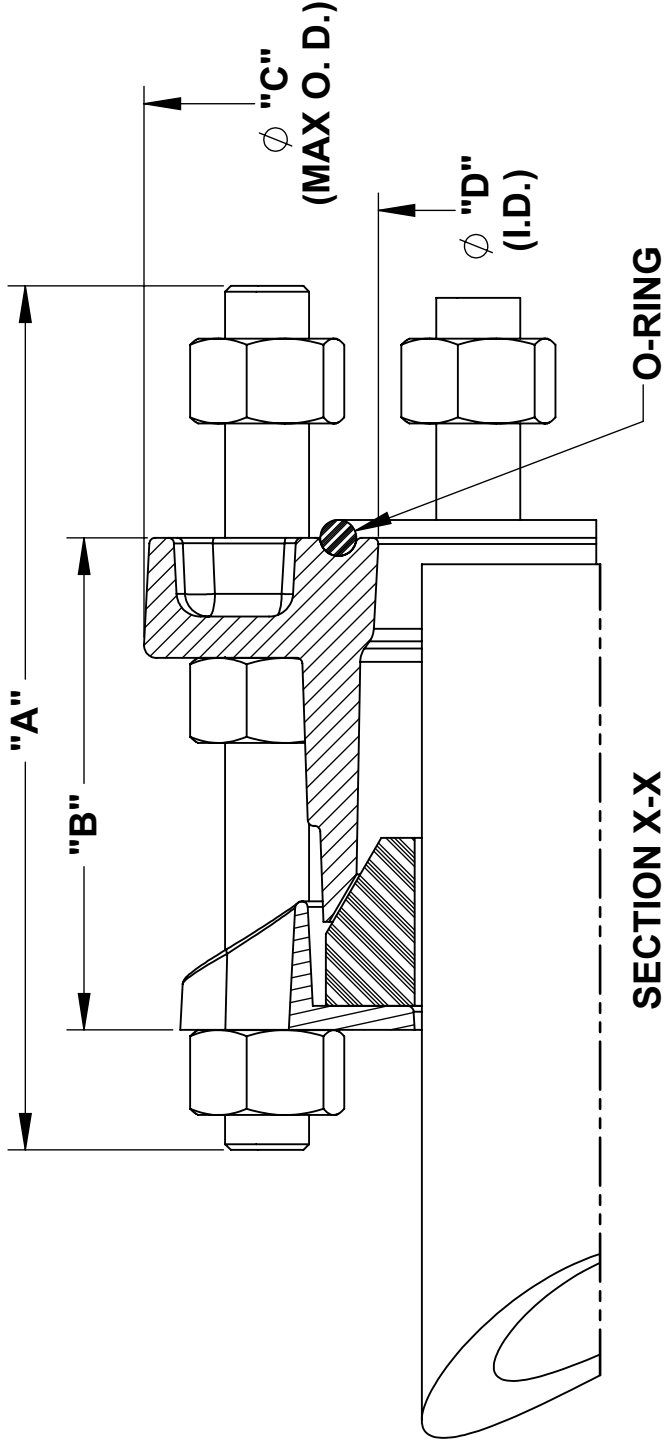
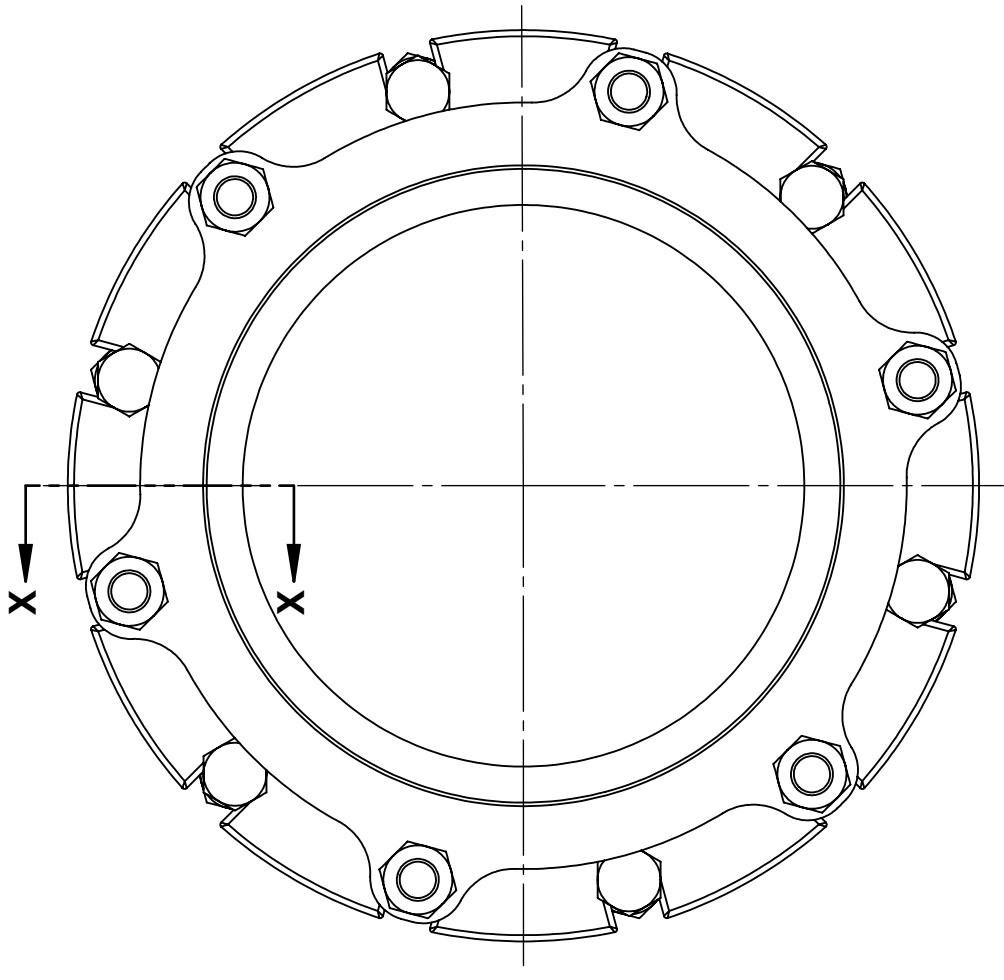
Maximum Angular Deflection per Coupling

Nominal Pipe Size	Center Sleeve Length		
	5"	7"	10" and Larger
1/2" up to 2"	3-1/2°	3-1/2°	3-1/2°
>2" up to 12"	2°	2-1/4°	2-1/4°
>12" up to 24"	3/4°	1°	1-1/8°
>24" up to 36"	-	1-3/4°	2°
>36" up to 42"	-	1-1/2°	1-3/4°
>42" up to 60"	-	1-1/4°	1-1/2°
>60" up to 80"	-	-	1-1/4°
>80" up to 100"	-	-	1°
>100"	-	-	-

30 Globe Ave, Texarkana, AR 71854
 Ph: 870-773-5127 • Fax: 870-773-5212
 Toll-Free Numbers: Ph: 800-643-9705 • Fax: 800-648-6792

WRENCH SIZE CHART

NUT	SIZE
5/8"-11UNC HH	1-1/16"
3/4"-10UNC HH	1-1/4"
7/8"-9UNC HH	1-7/16"



- NOTES:**
1. SEE SMITH-BLAIR CATALOG FOR ADDITIONAL DETAILS
 2. 12" COUPLING SHOWN OTHER SIZES SIMILAR
 3. MATING FLANGE NOT SHOWN

NOMINAL SIZE	A	B	C	D	STUD BOLT		FLANGE BOLT		APPROX. WT. (LB)
					QTY.	SIZE	QTY.	SIZE	
3	7	3.00	7.75	3.88	4	5/8" X 7"	-	-	17
4			9.03	5.24					
6	8	3.50	10.88	7.25	4	3/4" X 8"	4	3/4"	29
8			13.38	9.41					
10	9	4.00	15.88	11.63	6	7/8" X 9"	6	7/8"	60
12			18.75	14.00					

CERTIFIED TO NSF/ANSI 61-G & 372

TOLERANCES U.N.O. XX= ±.03 XXX= ±.015 FRACTIONS= ±.01 ANGLES= ±1° MACH. FIN=	NOTES: REMOVE BURRS AND SHARP EDGES DO NOT SCALE DWG.	APP'D	DATE
SCALE: N/A		CK'D	DATE
ALL DIMENSIONS ARE IN INCHES.		DRN	DATE

TITLE		P/N	
SPECIFICATION		N/A	
OMNI™ CAST FLANGED COUPLING ADAPTER		SPEC_912-90.DRW	
MODEL 912-90		1 OF 1 SHEET	
SMITH-BLAIR, Inc.		REV. 3/8/16	
TEXARKANA, ARKANSAS		DWG. NO.	