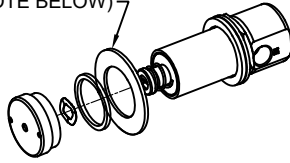


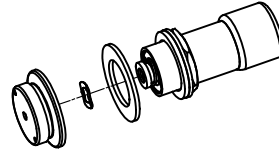
# PARTS BREAKDOWN

\*\*\* OPTIONAL PCP WASHER FOR FLUSH MOUNT SURFACES (SEE NOTE BELOW)



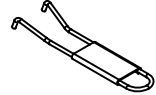
**5874PB** [1] [4]

POLISHED CHROME PLATED PUSH BUTTON WITH VALVE FOR BOTH RECESSED AND FLUSH MOUNT SURFACES. (ALSO USED FOR REPLACEMENT OF OLDER VALVE MODELS 5871, 5872, AND 5872HF - SEE NOTE 4.)



**5874PBF** [1]

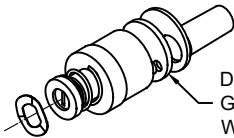
POLISH CHROME PLATED FLANGE PUSH BUTTON WITH VALVE FOR FLUSH MOUNT SURFACES ONLY.



**0006983506**  
SPANNER WRENCH  
(ONLY INCLUDED WITH MODELS:  
5874PB & 5874PBF)



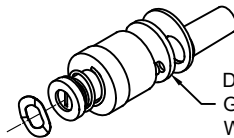
**0003244389**  
THREADLOCKER TO SECURE PUSH BUTTON  
(ONLY INCLUDED W/PB SERIES)



**VRK5874** [1] [2]

VALVE REPAIR KIT  
(STANDARD FLOW)

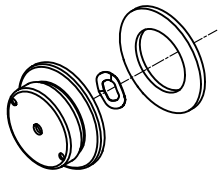
DO NOT REMOVE GASKET WHICH COMES WITH CARTRIDGE.



**VRK5874HF** [2] [3] [5]

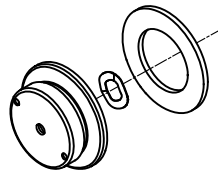
VALVE CARTRIDGE  
(HIGH FLOW)

DO NOT REMOVE GASKET WHICH COMES WITH CARTRIDGE.



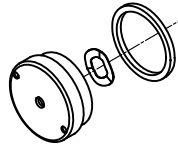
**PBA6**

POLISHED CHROME PLATED FLANGED PUSH BUTTON FOR FLUSH MOUNT SURFACES ONLY.



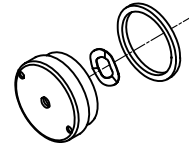
**PBA6C**

COPPER PLATED PUSH BUTTON WITH CHROME FLANGE FOR FLUSH MOUNT SURFACES ONLY.



**PBA7**

POLISHED CHROME PLATED PUSH BUTTON FOR BOTH RECESSED AND FLUSH MOUNT SURFACES.



**PBA7C**

COPPER PLATED PUSH BUTTON WITH CHROME OPERATOR FOR BOTH RECESSED AND FLUSH MOUNT SURFACES.



\*\*\* IF NEEDED, USE 1-3/4" O.D. X .050 THICK PCP WASHER PN 0006729529 (NOT SUPPLIED) IN SITUATIONS WHERE THE PUSH BUTTON HOLE IS SLIGHTLY OVERSIZED FOR THE 5874PB RING NUT.



**0002568123** [3]  
GASKET W/SCREEN



**0006626653**

WAVE WASHER FOR USE WITH BOTH RECESSED AND FLANGED STYLE PUSH BUTTON ASSEMBLIES. (MUST BE IN PLACE FOR PROPER PUSH BUTTON OPERATION)

**NOTES:**

- [1] **MODELS 5874PB, 5874PBF, AND VRK5874 ARE EQUIPPED WITH A STANDARD FLOW CARTRIDGE.** ORDER THESE MODELS WHEN REPLACING/REPAIRING VALVES WITH A STANDARD FLOW APPLICATION. **DO NOT USE ON ANY MODELS THAT FEATURE A CUSPIDOR OR HAVE A HIGH FLOW APPLICATION WITHOUT IMPLEMENTING ADDITIONAL REQUIRED STEPS (SEE NOTES 2 AND 3).**
- [2] **MODELS 1025/G AND 3300/G EQUIPPED WITH A POP-UP BUBBLER HEAD (MODEL 5725) AND MODEL VRK5874HF, 2406 (EQUIPPED WITH A CUSPIDOR) AND 1920 SERIES BOTTLE FILLER MODELS ALL UTILIZE A HIGH FLOW CARTRIDGE TO ENSURE PROPER FLOW.**
- [3] **WHEN REPLACING A HIGH FLOW CARTRIDGE ASSEMBLY, DO NOT USE VRK5874; USE VRK5874HF.**
- [4] **FOR VALVE REPLACEMENT ON UNITS WITH OLDER 5871, 5872 (STANDARD FLOW) AND 5872HF (HIGH FLOW) VALVES:** CONTACT HAWS TECHNICAL SUPPORT.
- [5] **VRK5874HF IS ALSO USED ON 1920 SERIES BOTTLE FILLER MODELS (SEE NOTE 2).**

WHEN ORDERING PARTS PLEASE SPECIFY MODEL NUMBER.

		1455 KLEPPE LANE SPARKS, NEVADA 89431 (775) 359-4712 FAX (775) 359-7424 E-MAIL: HAWS@HAWS.CO.COM WEBSITE: WWW.HAWS.CO.COM	
		ECN NO. 4250 ECN: 5664 FV	MODEL(S) 5874PB/5874PBF/VRK5874/VRK5874HF/ PBA6/PBA6C/PBA7/PBA7C
DRAWN LM DATE 06/08/16 CHKD JL	APPROVED FV DATE 03/02/21	SCALE: NA DRAWING TYPE: PARTS BREAKDOWN	REVISION 10