

# AB&A for Commercial & Residential Applications

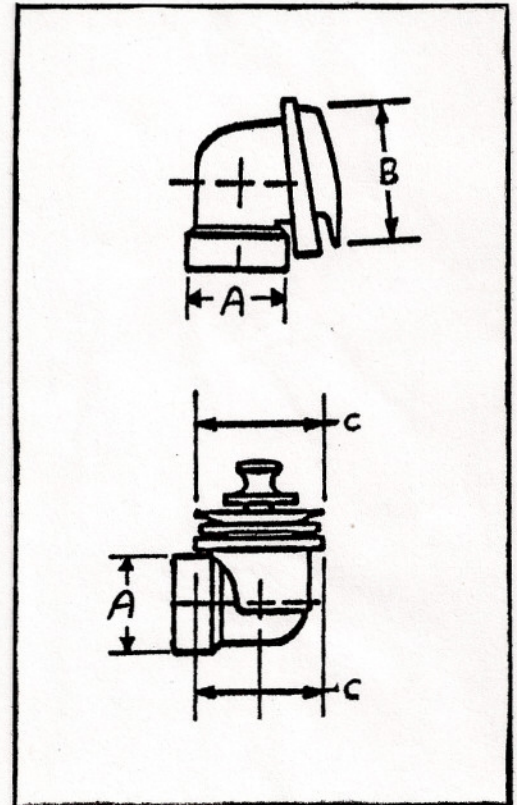
Job Name \_\_\_\_\_ Contractor \_\_\_\_\_  
 Job Location \_\_\_\_\_ Approval \_\_\_\_\_  
 Engineer \_\_\_\_\_ Contractor's P.O. No. \_\_\_\_\_  
 Approval \_\_\_\_\_ Representative \_\_\_\_\_

## Series 951

**Bath Waste and Overflow  
 Brass Push eN Lift Closure  
 Less Pipe and Tee, 1 Hole Overflow Plate**

UPC Listed  
 Manufactured to ASME Standard  
 ASME A 112.18.2-2005 / CSA B 125.2-05

Part #	To Submit	Quantity
951		
955		
956		
960		



Part #	Description		Dimensions		
	Material	Finish	A	B	C
951	ABS	Chrome Plated Finish on Trim ONLY	1-1/2" Schedule 40 DWV	3-3/8"	2-7/8"
955	ABS	Special Finish on Trim ONLY	1-1/2" Schedule 40 DWV	3-3/8"	2-7/8"
956	PVC	Chrome Plated Finish on Trim ONLY	1-1/2" Schedule 40 DWV	3-3/8"	2-7/8"
960	PVC	Special Finish on Trim ONLY	1-1/2" Schedule 40 DWV	3-3/8"	2-7/8"

AB&A's product specifications are approximate and for Reference Only. AB&A products are based on the United States of America customary units of measure. AB&A reserves the right to change or modify product design, specifications, materials, or construction without prior notice. AB&A reserves the right to not incur any obligation to make such changes and modifications on all previously or subsequently sold AB&A products.



**AMERICAN BRASS & ALUMINUM  
 FOUNDRY, INC.**

2060 GARFIELD AVE., CITY OF COMMERCE, CA 90040

800-545-9988

FAX 800-835-7020

WWW.ABAFOUNDRY.COM

WWW.ABAINC.NET