

Features

- Catalyzed polyurethane provides a durable moisture-resistant finish.
- Double doors with adjustable hinges.
- Two pullout storage extensions, each with adjustable shelf.
- Includes cabinet hardware.
- Express™ vanities are easy to transport and set up in minutes.
- Coordinates with the Westmore mirror.

Material

- Ailanthus solids and ash veneers.



Codes/Standards

CARB P2

KOHLER® One-Year Limited Warranty

See website for detailed warranty information.

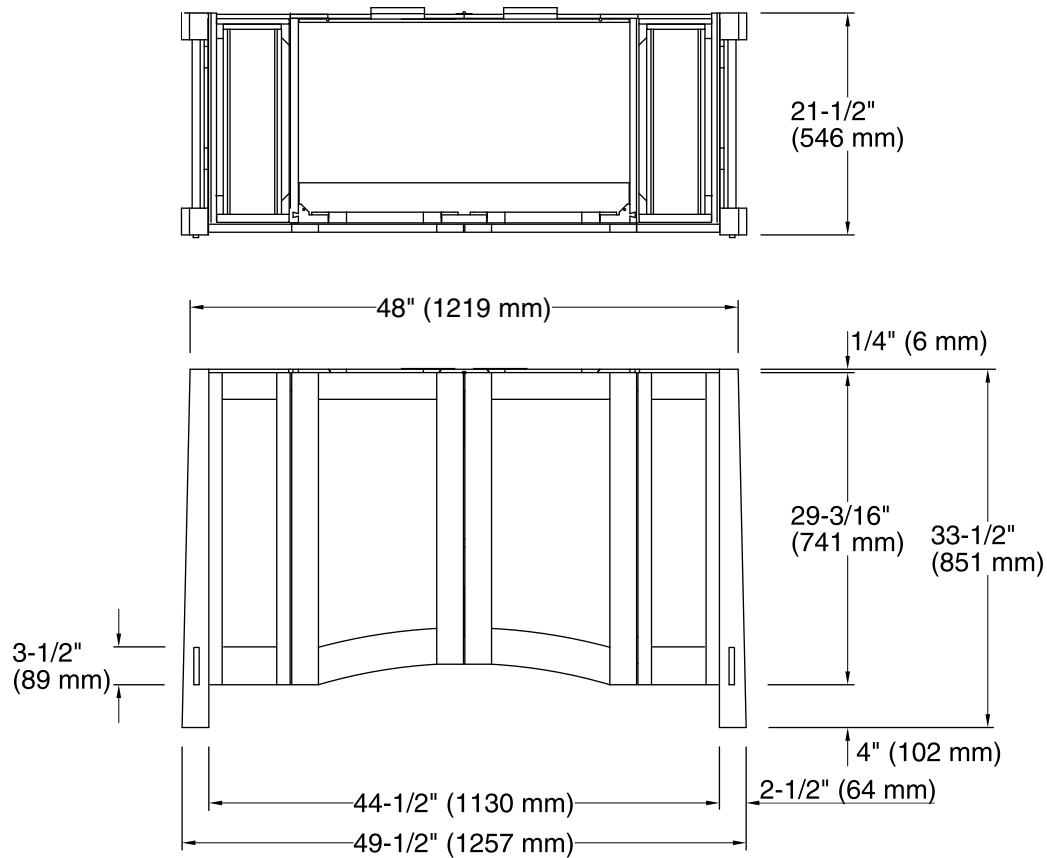
Available Color/Finishes

Color tiles intended for reference only.

Color	Code	Description
-------	------	-------------



F41	Westwood
-----	----------



Technical Information

All product dimensions are nominal.

Notes

Install this product according to the installation guide.