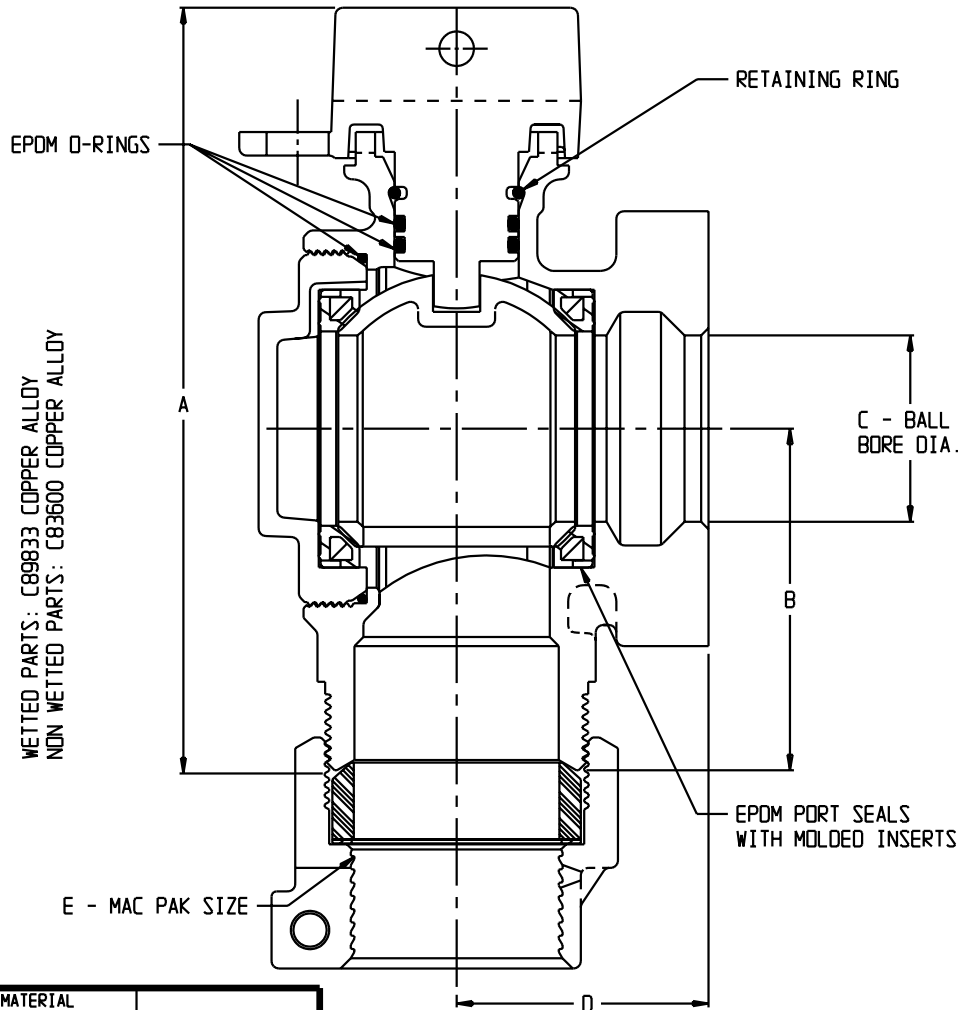


5133-151 -

PATT. No.

CORE No.

PART NO.	MODEL	SIZE	A	B	C	D	E
5149-067	74602B-22	1 1/2	6.14	2.75	1.50	2.03	1 1/2
5149-224	74602B-22	2	6.92	3.22	2.00	2.84	2

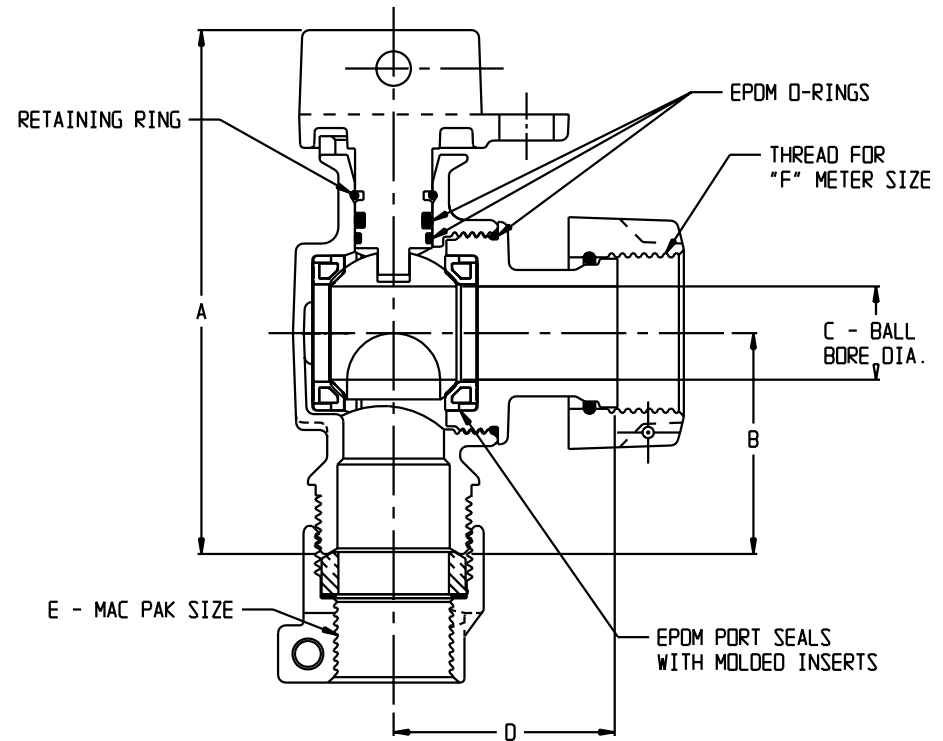


MATERIAL SPECIFICATIONS	
UNLESS OTHERWISE SPECIFIED - TOLERANCES, ETC.	
CASTINGS: +/- .025	
2 PLACE DECIMALS (.00) +/- .015	
3 PLACE DECIMALS (.000) +/- .005	
FINISH 125 max.	RADII:
DRAFT:	
CONCENTRICITY T.I.R. max.	DIMENSIONS IN INCHES

A. Y. McDONALD CONSIDERS THE INFORMATION ON THIS ASSEMBLY DRAWING CORRECT WHEN PUBLISHED. ITEM AND OPTION AVAILABILITY INCLUDING SPECIFICATIONS, ARE SUBJECT TO CHANGE WITHOUT NOTICE. PLEASE VERIFY THAT PRODUCT INFORMATION IS CURRENT.

PART NO.	MODEL	SIZE	A	B	C	D	E	F
5133-151	74602B-22	3/4	4.22	1.78	.75	1.78	3/4	5/8 X 3/4, 3/4
5133-162	74602B-22	1	5.03	2.25	1.00	2.71	1	1
5149-059	74602B-22	1 X 3/4 X 3/4	4.65	2.21	.75	1.78	1	5/8 X 3/4, 3/4
5133-015	74602B-22	1 1/4 X 3/4 X 3/4	4.99	2.54	.75	1.78	1 1/4	5/8 X 3/4, 3/4

WETTED PARTS: C89833 COPPER ALLOY
NON WETTED PARTS: C83600 COPPER ALLOY



5133-151	09-239	---	RELEASED TO SALES ASSY DIRECTORY	DRAWN	CHECKED
				DJC	
				10-13-09	
				SCALE	APPROVED
	C.O. No.	SYM.	REVISIONS		
	This print is the property of A.Y. McDONALD MFG. CO., Dubuque, Iowa and is loaned subject to return upon demand. It is issued with the expressed agreement that it will not be issued directly or indirectly in any way detrimental to our interests. The acceptance of this drawing will be construed as an acceptance of the foregoing agreement.				
	A.Y. McDonald Mfg. Co.			5133-151	-
	DUBUQUE, IOWA				