

ElectriFLEX MD™ (Medium Duty) Commercial Electric Water Heater



Photo is of
E32-50S-3

Bradford White ElectriFLEX MD™ Electric Models Feature:

- **Fully Automatic Controls**—Designed to provide outlet water at a thermostatically controlled temperature greater than 180°F (82°C).
- **Direct Heat Transfer With Three Immersed INCOLOY® Elements**—Transfers heat directly and efficiently to the water. Screw-in style element.
- **Vitraglas® Lining with Microban®**—An exclusively engineered enamel formula that provides superior tank protection from the corrosive effects of water; and with Microban® antimicrobial product protection to help prevent the growth of bacteria, mold and mildew on the surface of the tank lining.
- **Hydrojet® Sediment Reduction System**—Cold water inlet sediment build-up reducing device helps prevent sediment build up in the tank.
- **Insulation System**—2" (51mm) Non-CFC foam insulation cover the sides and top of the tank, reducing heat loss. This results in less energy consumption, improved efficiencies, and jacket rigidity.
- **Water Connections**—1¼" (32mm) NPT factory-installed true dielectric fittings extend water heater life and simplify water line connections.
- **Conversion Kits**—Design certified by UL® for field conversion. Conversion kits are available to convert any one model to a variety of voltages, kW inputs and phase. (kit part numbers on reverse side.)
- **Protective Anode Rod**—Provides added protection against corrosion for long-term, trouble-free service.
- **Steel Tank**—Heavy gauge steel automatically formed, rolled and welded.
- **T&P Relief Valve**—Supplied.
- **Low Restrictive Brass Drain Valve**—Durable tamper proof design.

FEATURING:



3 or 5-Year Limited Tank Warranties / 1-Year Limited Warranty on Component Parts.

For more information on warranty, please visit www.bradfordwhite.com

For products installed in USA, Canada, and Puerto Rico. Some states do not allow limitations on warranties. See complete copy of the warranty included with the heater.



Microban® antimicrobial product protection helps prevent the growth of bacteria, mold and mildew that may affect the product. The built-in antimicrobial properties do not protect users or others from disease-causing organisms. Microban® is a registered trademark of Microban Products Company.

Commercial Electric Water Heater

ElectriFLEX MD™ Electric Models

Meet or exceed ASHRAE 90.1 (latest edition), C.E.C. Listed

Model Number	Rated Nominal Capacity		Recovery at 100°F Rise*		A Floor to Heater Top	B Jacket Dia.	C Floor to Water Conn.	F Floor to T&P Conn.	G Floor to Top of Control Box	H Depth	C/L of Water Conn.	Water Conn. NPT	Approx. Shipping Weight
	U.S. Gal.	Imp. Gal.	U.S. GPH	Imp. GPH	in.	in.	in.	in.	in.	in.	in.	in.	lbs.
E32-50S-3	50	42	74	62	47 1/4	22	47 7/8	48 1/8	44 1/2	24 5/8	8	1 1/4	137
E32-80R-3	80	67	74	62	59 3/4	24	61	61 3/8	57	26 5/8	8	1 1/4	190
E32-120R-3	119	99	74	62	63	28 1/4	64 5/8	65	61 1/2	30 7/8	8	1 1/4	312

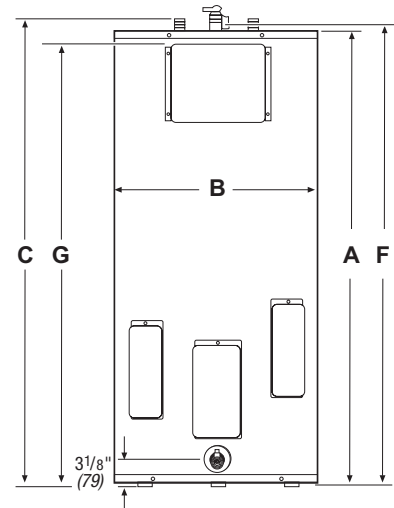
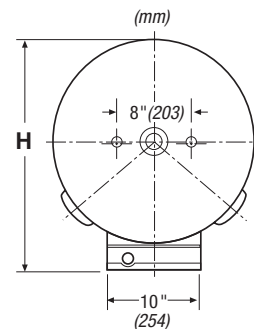
Model Number	Rated Nominal Capacity		Recovery at 56°C Rise*		A Floor to Heater Top	B Jacket Dia.	C Floor to Water Conn.	F Floor to T&P Conn.	G Floor to Top of Control Box	H Depth	C/L of Water Conn.	Water Conn. NPT	Approx. Shipping Weight
	Liters	Liters/Hour	mm.	mm.	mm.	mm.	mm.	mm.	mm.	mm.	mm.	mm.	kg.
E32-50S-3	189	280	1200	559	1216	1222	1130	625	203	32	62		
E32-80R-3	303	280	1518	610	1550	1559	1448	676	203	32	86		
E32-120R-3	450	280	1600	730	1641	1651	1562	784	203	32	142		

All models are wired 240V, 3-phase, 18kW.
 Other voltages, wattages and kW are available and must be specified when ordering.
 For 5 year models, change suffix "3" to "5".
 * Based on 18kW operation. NSF Kits available.

Required Total Heater kW	Each Element Wattage	Kit Part Numbers				
		208V	240V	380V	415V	480V
13.5	4500	415-43942-43	415-43942-10	415-43942-47	N/A	415-43942-37
15	5000	415-43942-44	415-43942-40	415-43942-48	N/A	415-43942-38
18	6000	415-43942-45*	415-43942-41	415-43942-49	N/A	415-43942-39

* 415-43942-45 will require control box replacement (included in kit). Other wattages, wiring phase and kW are available and must be specified when ordering. 277 volt cannot be ordered as 3 phase operation.

Input kW	Full Load Amperes - (Single Phase / Three Phase) and Recovery						GPH at °F Rise			LPH at °C Rise		
	208V	240V	277V	380V	415V	480V	40°F	100°F	140°F	23°C	56°C	78°C
13.5	64.9/37.5	56.3/32.5	48.7	20.5	18.8	28.1/16.2	139	56	40	526	212	151
15	72.1/41.6	62.5/36.1	54.2	22.8	20.9	31.3/18.0	155	62	44	587	235	167
18	86.5/50.0	75.0/43.3	65.0	27.3	25.0	37.5/21.7	186	74	53	704	280	201



Sample Specification

Water heater shall be a Bradford White model with a rated storage capacity of not less than _____ gallons/liters, a minimum kW input of _____, and a minimum recovery of _____ GPH/LPH at 100°F (56°C) temperature rise. It shall be designed certified either with or without a separate storage tank. The tank shall be lined with Vitraglas® vitreous enamel with Microbar® antimicrobial technology. The tank should consist of three screw type elements with a combined maximum input of 18 kW. The tank shall have one anode rod. The units should be design certified by UL® for field conversions with specific kits available from the factory. The heater shall be insulated with not less than 2" (51mm) of Non-CFC foam. This water heater shall be equipped with an ASME rated T&P relief valve. The entire installation shall be made in compliance with state and local codes and ordinances.

General

All models UL® listed. All potable water connections are 1/4" NPT (32mm) on 8" (203mm) centers. All electrical connections are 3/4" (19mm) NPT. All models certified at 300 PSI test pressure (2068 kPa) and 150 PSI working pressure (1034 kPa).

Dimensions and specifications subject to change without notice in accordance with our policy of continuous product improvement.

— BRADFORD WHITE IS —



Sales: 800-523-2931 ■ Fax 215-641-1612

24/7 Technical Support: 800-334-3393 ■ Email techserv@bradfordwhite.com

Products made by Bradford White are manufactured in the United States using the finest raw materials and components from around the world.

Built to be the Best®