



Available in 38, 40 and 50 Gallon Tall – 40 and 50 Gallon Short Gas Models

- ▶ **8-Year\* Limited Tank and Parts Warranty with a Professional Installation.**
- ▶ **With ProtectionPlus™ the 8-Year Limited Tank Warranty Becomes 12 Years!**

### Guardian System™

- One-of-a-kind air/fuel shut-off device offers double protection
- Maintenance free – no filter to clean
- Standard replacement parts

### Environmentally Friendly Burner

- Low NOx design for low nitrous oxide emissions

### Self-Cleaning

- EverKleen™ patented system fights sediment build-up
- Reduces fuel costs
- Provides more hot water

### Easy to Light

- No matches required

### Energy Efficient

- More hot water at low operating cost

### High Altitude Compliant

- All models are certified for applications up to 6,000 feet above sea level. Some models are certified up to 10,200 feet above sea level. Check factory for listings

### Longer Life

- Patented magnesium anode rod design incorporates a special resistor that protects the tank from rust

### Plus...

- Brass drain valve and temperature and pressure relief valve are included
- Meets or exceeds National Appliance Energy Conservation Act (NAECA) requirements

\*See Residential Warranty Information Brochure for complete warranty information.

Energy Factor and Average Annual Operating Costs based on D.O.E. (Department of Energy) test procedures. D.O.E. national average fuel rate natural gas 91¢/therm; LP \$1.23/gallon.



**Get 4 MORE YEARS with ProtectionPlus™**



DESCRIPTION			FEATURES				ROUGHING IN DIMENSIONS (SHOWN IN INCHES)									ENERGY INFO.		
TYPE	GAL. CAP.	MODEL NUMBER	GAS INPUT IN THOUS. BTU/HR.		RECOVERY IN G.P.H. 90° RISE		FIRST HOUR DEL. G.P.H. NAT.	HT. TO VENT A	TANK HT. B	DIAM. C	HT. TO GAS CONN. D	VENT SIZE E	WATER CONN. CNTR. F	HT. TO SIDE T&P G	WATER CONN. H	SHIP. WT. (LBS)	ENERGY FACTOR NAT.	AVG. ANN. OPER. COST NAT.
			NAT.	LP	NAT.	LP												
TALL	40	22V40 PROF	38	—	38.4	—	73	61-3/4	58-3/8	18-1/8	14-1/2	3	8	52-1/4	3/4	120	0.59	\$231
	38	42V40 PROF	40	34	40.4	34.3	68	61-1/2	57-3/4	19-3/4	14-1/2	3	8	52-1/4	3/4	125	0.60	\$227
	40	RHG PRO40-40F	40	34	40.4	34.3	68	63-1/4	59-3/4	21	14-1/2	3	8	53-1/2	3/4	135	0.62	\$220
	50	22V50 PROF	38	—	38.4	—	90	61-1/2	58-1/4	20-1/8	14-1/2	3	8	51-3/8	3/4	130	0.58	\$235
	50	42V50-40 PROF	40	36	40.4	36.4	83	61-1/2	58	21-3/4	14-1/2	3	8	52-1/2	3/4	150	0.58	\$235
	50	RHG PRO50-40F	40	36	40.4	36.4	83	62-1/4	58-3/4	23	14-1/2	3	8	52-1/2	3/4	165	0.62	\$220
	50	RHG PRO50-50F	50	—	50.5	—	83	62	58	21-3/4	14-1/2	4	8	52-1/2	3/4	150	0.58	\$235
SHORT	40	42V40SPROF	40	36	40.4	36.4	72	53-7/8	50-1/2	20-1/8	14-1/2	3	8	44	3/4	130	0.59	\$231
	50	42V50SPROF	40	36	40.4	36.4	84	54-1/4	49-3/4	22-1/4	14-1/2	3	8	44	3/4	158	0.59	\$231

**SPECIFY LP GAS WHEN ORDERING.** Add "P" suffix to the model number. Example: RHG PRO40-40PF.

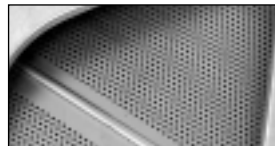
• For SCAQMD rule 1121 compliance models (California only), add "SQ" suffix to the model number. Example: 22V40 PROFSQ.

## Rheem Guardian System Features...



### Exclusive Combustion Shut-off System

Should a spill incident occur, the Guardian System shuts off the gas supply and the air supply preventing a sustained vapor burn in the combustion chamber.



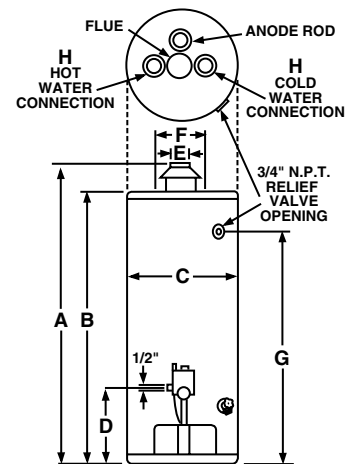
### Flame Arrestor Plate

A specially-designed flame arrestor prevents ignition of vapors outside the combustion chamber.



### Maintenance Free

Superior air filtration prevents the flame arrestor from becoming clogged by lint, dust and oil.



These units are designed to meet or exceed ANSI (American National Standards Institute) requirements and have been tested according to D.O.E. test procedures and meet or exceed the energy efficiency requirements of NAECA, ASHRAE standard 90, ICC Code and all state energy efficiency performance criteria for energy consuming appliances.

Before purchasing this appliance, read important energy cost and efficiency information available from your supplier.

## Exclusive Professional Installation Warranty

When this Rheem PROFESSIONAL water heater is installed by a licensed contractor, the consumer can upgrade his limited tank and parts warranty from 6 to 8 years by returning to Rheem the warranty registration card and a copy of the contractor's invoice.

This Rheem exclusive warranty upgrade feature enhances your value as a plumbing professional. A professional installation is a better installation.

Refer to the warranty certificate enclosed with each heater for specific details.

**PROTECTIONPLUS™**

**8 YEAR LIMITED TANK WARRANTY BECOMES 12**

For more details, see form 101-7.

*In keeping with its policy of continuous progress and product improvement, Rheem reserves the right to make changes without notice.*