

2720SKWP – EVERYDAY BATHS

72 x 36 x 20 inches

SOAKER MODEL #2720SK

WHIRLPOOL MODEL #2720SKWP



FEATURES

- Alcove bath
- Integral arm rest
- Ergonomic backrest
- Integral tiling flange (3T)
- Integral skirt
- Slip-resistant textured bottom
- Left or right hand drain
- AcrylX™ applied acrylic surface
- Lifetime limited warranty

Whirlpool Features:

- 4 directional hydrotherapy jets
- Color matched or clear trim
- Pneumatic on/off control
- Advanced safety suction system

OPTIONS

- Designer drain, waste & overflow

AQUATIC ADVANTAGE

- National distribution
- 6 manufacturing facilities
- Private fleet
- Centralized customer service
- Field support

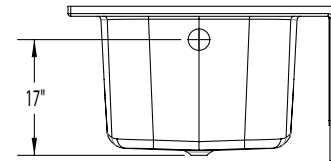
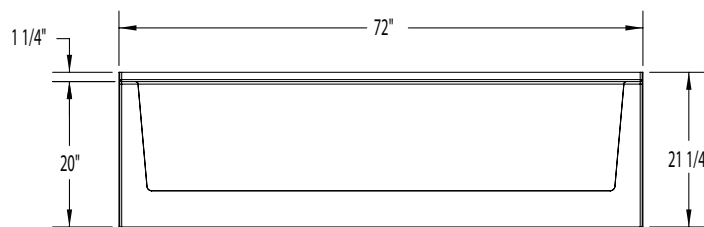
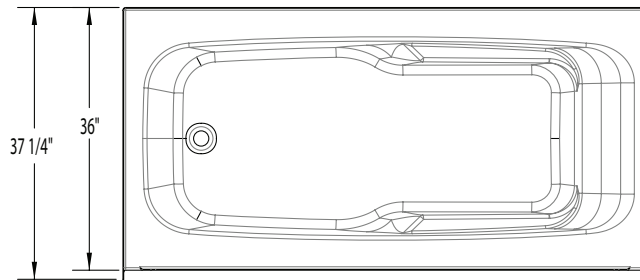
COLOR OPTIONS

| Stock | Upgraded | Premium |
|-----------|--|--|
| White (C) | Almond (NA) Linen/Biscuit (C) Bone (C) | Black (NA) Mexican Sand (NA) Sand Bar (NA) Sterling Silver (NA) |



2720SKWP

72 x 36 x 20
inches



FEATURES lbs Dimensional Tolerance $\pm \frac{3}{16}$ ". Dimensions needed for site preparation should be measured from the unit. Aquatic assumes no responsibility for preparatory work.

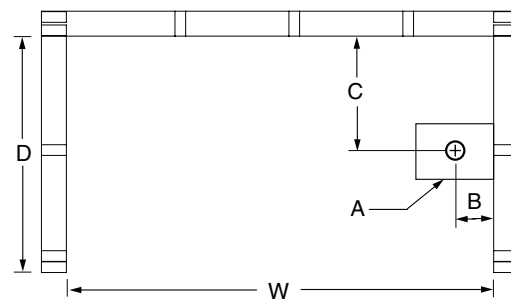
| Model # | Material | Jets | Motor | Controls | Drain | Net Wt. | Pkg. Wt. |
|---------------------|----------|------|--------|-----------|----------|---------|----------|
| Soaker #2720SK | AcrylX™ | – | – | – | LH or RH | 130 | 140 |
| Whirlpool #2720SKWP | AcrylX™ | 4 | 63 GPM | Pneumatic | LH or RH | 130 | 140 |

DIMENSIONS

| Specifications | inches |
|---------------------------------|-------------|
| Width: Overall / Net | 72 |
| Depth: Overall / Net | 37 1/4 / 36 |
| Height: Overall / Net | 21 1/4 / 20 |
| Enclosure Opening | – |
| Skirt Height | 20 |
| Drain Rough-In (from Back Wall) | 18 |
| Drain Rough-In (from Side Wall) | 2 1/2 |
| Drain: Diameter / Clearance | 2 / 3/4 |

FRAMING DIMENSIONS inches

| Type | D Depth | W Width | H Height | A | B | C |
|--------|------------|------------|-------------|---------|-------|----|
| Alcove | 37 1/4 | 72 1/8 | 19 3/4 | Box Out | 2 1/2 | 18 |



SUMP DATA

| Top of Drain to Bottom of Overflow | Capacity to Overflow gal | Min. Operating Capacity gal | WIDTH @ centerline | | DEPTH @ centerline | |
|---------------------------------------|--------------------------------|-----------------------------------|--------------------|--------|--------------------|--------|
| | | | Top | Bottom | Top | Bottom |
| 14 3/8 | 80 | 60 | 65 | 49 | 26 1/2 | 22 |