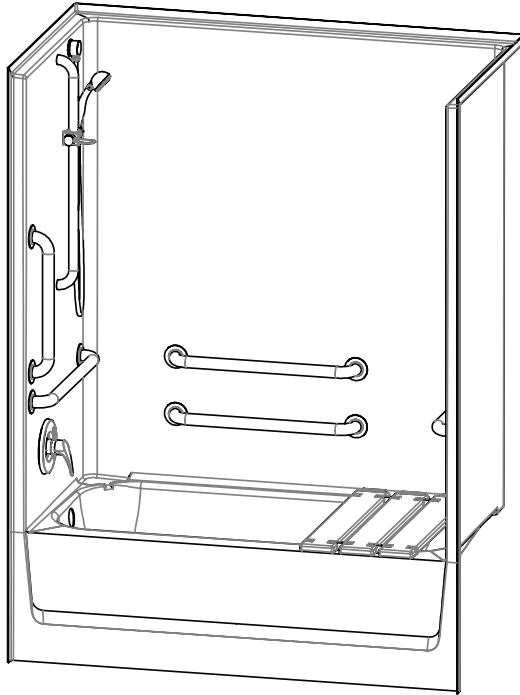


2603SMTE – ACCESSIBLE TUB-SHOWERS

inches

Interior: 56 x 30 1/4 x 78

Exterior: 60 x 33 1/4 x 79 1/4



AQUATIC ADVANTAGE

- National distribution
- 6 manufacturing facilities
- Private fleet
- Centralized customer service
- Field support

COLOR & TRIM OPTIONS

Stock	Upgraded
White	Almond Biscuit Bone

**Additional custom colors available.
(Contact Customer Service)

FEATURES

- AcrylX™ applied acrylic surface
- 17" skirt
- Smooth wall
- LH or RH drain
- Partial reinforcement to accommodate standard grab bar locations.
- Additional reinforcement available.
- Lifetime limited warranty (30 year commercial)

OPTIONS

- Grab bars
- Removable seat
- Hand-held shower assembly with slide bar
- Pressure balancing mixing valve
- Curtain rod and/or shower curtain

CODE COMPLIANCE

- ADA
- FHA
- ICC/ANSI A117.1
- IAPMO Z124-2011
- HUD UM73a
- CAN/CSA-B651-04
- CSA-B45-11

**Code compliant when fully equipped and installed according to guidelines.



Aquatic products may be
specified as Lasco Bathware.



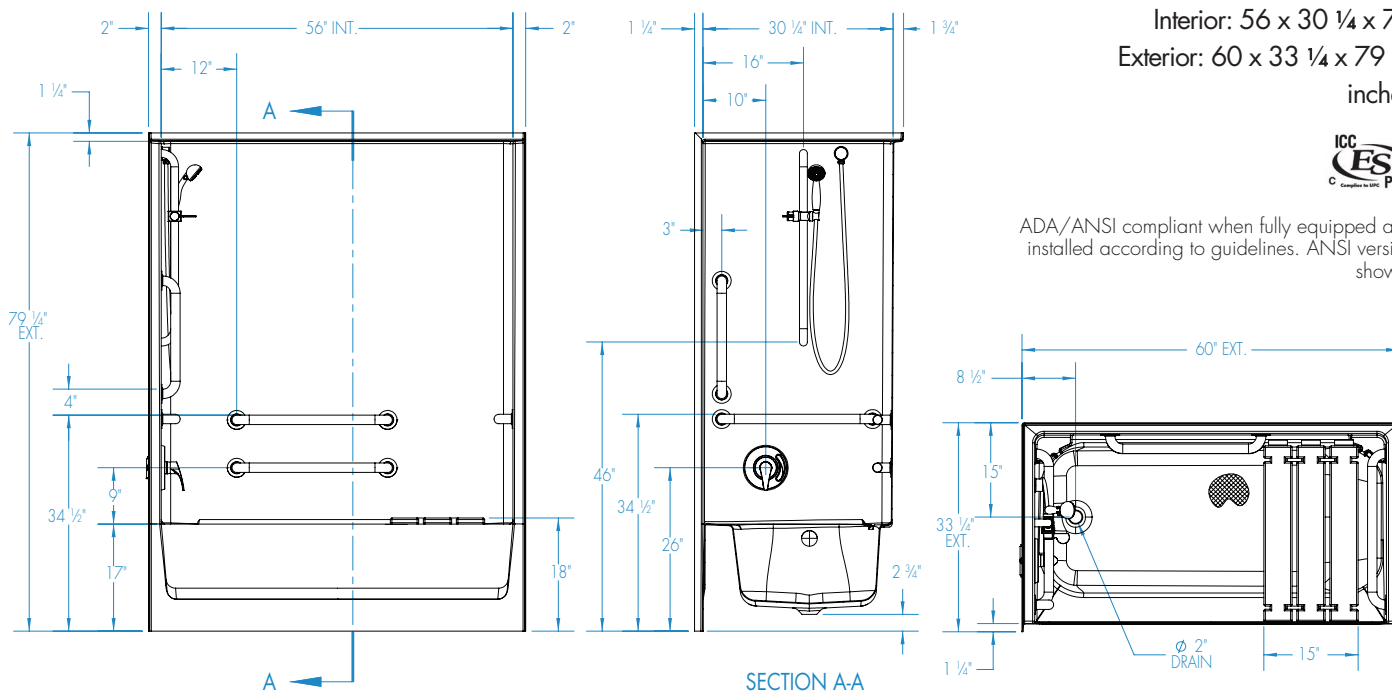
Aquatic products may be specified as Lasco Bathware.

2603SMTE

Interior: 56 x 30 1/4 x 78
Exterior: 60 x 33 1/4 x 79 1/4
inches



ADA/ANSI compliant when fully equipped and installed according to guidelines. ANSI version shown.



FEATURES

Dimensional Tolerance $\pm \frac{3}{8}$ ". Dimensions needed for site preparation should be measured from the unit. Aquatic assumes no responsibility for preparatory work.

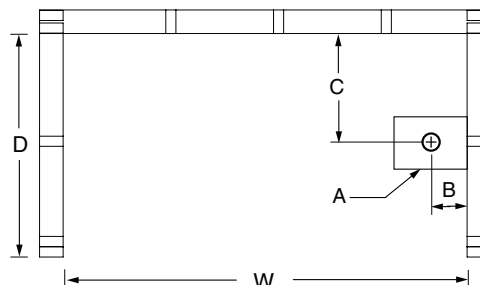
Type and Model #	Material	Wall Finish	Pieces	Drain	Skirt Height	Net Wt. lbs	Pkg. Wt. lbs
Tub-shower #2603SMTE	AcrylX™	Smooth	1	LH/RH	17" skirt	199	209

DIMENSIONS

Specifications	inches
Width: Overall / Net	60 / 56
Depth: Overall / Net	33 1/4 / 32
Height: Overall / Net	79 1/4 / 78
Enclosure Opening:	56
Skirt Height:	17
Drain Rough-In (from Back Wall)	8 1/2
Drain Rough-In (from Side Wall)	15
Drain: Diameter / Clearance	2 / 2 3/4

FRAMING DIMENSIONS inches

Type	D Depth	W Width	H Height	A	B	C
Alcove	33 1/4	60 1/8	-	6 x 12 (150 x 305)	1 1/2 (40)	15



SUMP DATA

Top of Drain to Bottom of Overflow	Capacity to Overflow gal (ltr)	WIDTH @ centerline		DEPTH @ centerline	
		Top	Bottom	Top	Bottom
12	38	23 1/4	21 1/4	53 3/4	45 1/4