

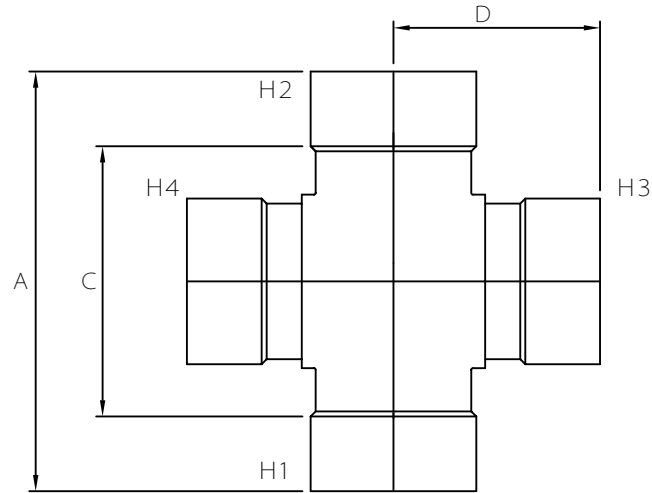


MULTI FITTINGS

# LAYING LENGTH

ISSUE DATE: 2018 02 07  
SUPERCEDES: 2005 06 30

## CROSS TEE (HxHxHxH)



FABRICATED FITTING (F)

	SIZE H1xH2xH3xH4	PART NUMBER	A REF	C REF	D REF
P	4x4x4x4	026227	-	-	-
F	6x6x4x4	294377	16.00	10.00	6.75
F	6x6x6x6	294359	18.25	12.25	8.25
F	8x8x4x4	294379	18.50	10.50	7.75
F	8x8x6x6	294381	20.50	12.50	9.25
F	8x8x8x8	294361	22.50	14.50	10.25
F	10x10x4x4	294383	20.50	10.50	9.00
F	10x10x6x6	294385	22.75	12.75	10.25
F	10x10x8x8	294387	24.75	14.75	11.25
F	10x10x10x10	294363	26.75	16.75	13.00
F	12x12x4x4	294389	22.75	10.75	10.00
F	12x12x6x6	294391	25.00	13.00	11.25
F	12x12x8x8	294393	27.00	15.00	12.25
F	12x12x10x10	294395	29.00	17.00	14.00
F	12x12x12x12	294365	31.00	19.00	15.00

NOTE: Refer to Page LPD5 for Molded hub detail  
Refer to Page LPD5 - 1 for Fabricated hub detail