

SCHEDULE 40 PVC DWV FITTINGS



FEATURES & BENEFITS

Lower Installation Costs

PVC pipe and fittings are easily handled, stored, cut and joined, meaning significant reductions in labor and transportation costs on typical installations.

Superior Chemical Resistance

PVC DWV pipe and fittings handle exceptionally well against such chemicals as acids, alkalis and normally diluted hydrocarbons. Aggressive industrial effluents and acid rain are easily tolerated as well.

Corrosion Resistance

PVC DWV fittings are immune to damage from naturally corrosive, soil conditions as well as electrochemical and galvanic corrosion. Our fittings' non-corroding properties ensure improved flow, lower maintenance costs and longer performance life.

Lower Thermal Conductivity

With a dramatically lower thermal conductivity factor as compared to metal, plastic systems have less heat loss or gain and sustain the temperature of the service with less variation than metal piping. As a result, pipe insulation is often not required.

Multi Fittings offers a wide range of injection molded and fabricated Schedule 40 DWV fittings for the sewer market.

PVC DWV fittings are typically used for drainage and effluent piping and rainwater leaders for buildings such as parking garages or from roof tops in commercial and industrial applications.

For over 50 years, Multi Fittings has been an industry leader in offering the most comprehensively engineered and tested fittings for plastic pipe in North America.

Multi Fittings produces the widest range of injection molded fittings for pressurized water mains and sewer forcemains, gravity flow sewers and drain, waste and vent applications.

SIZES

Injection Molded
4" – 12"

Fabricated Molded
10" – 24"

MULTI FITTINGS

Telephone: 519 681-2140

Toll Free: 800 265-1815

Fax: 519 681-2156

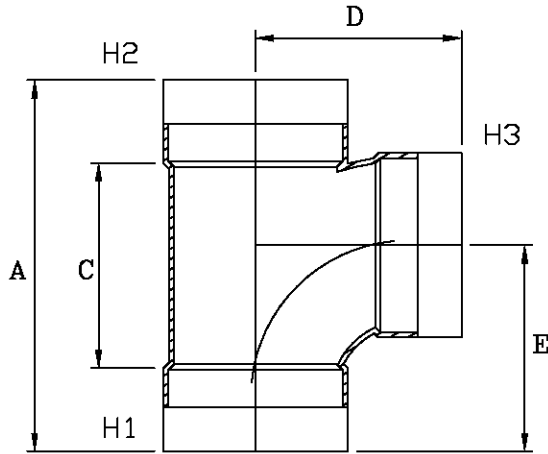


MULTI FITTINGS

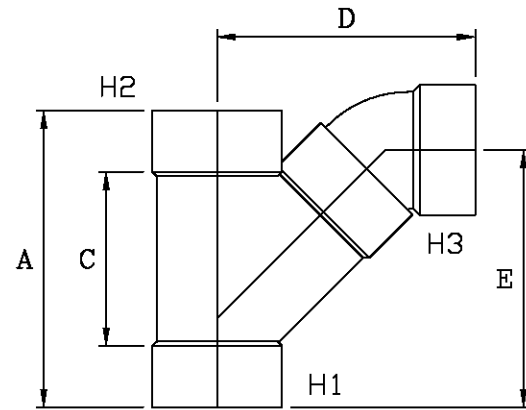
LAYING LENGTH

ISSUE DATE: 2018 02 07
SUPERCEDES: 2005 06 30

SANITARY TEE (HxHxH)



INJECTION MOLDED FITTING (M)



FABRICATED FITTING

	SIZE H1xH2xH3	PART NUMBER	A REF	C REF	D REF	E REF
M	4x4x4	026470	9.625	6.125	5.625	5.625
M	6x6x4	026079	12.000	6.000	6.125	6.875
M	6x6x6	026080	15.500	9.500	8.500	9.250
M	6x6x6	226052	15.500	9.500	8.500	9.250
F	8x8x4	294217	19.00	11.00	13.25	15.00
F	8x8x6	294219	22.00	14.00	17.00	18.75
P	8x8x8	026013	-	-	-	-
F	10x10x4	294221	21.25	11.25	14.25	16.25
F	10x10x6	294223	24.25	14.25	18.00	20.00
F	10x10x8	294225	27.00	17.00	21.25	23.00
F	10x10x10	294201	30.00	20.00	24.75	26.75
F	12x12x4	294227	23.50	11.50	15.25	17.25
F	12x12x6	294229	26.75	14.75	19.00	21.25
F	12x12x8	294231	29.50	17.50	22.25	24.25
F	12x12x10	294233	32.50	20.50	25.75	27.75
F	12x12x12	294203	35.25	23.25	29.00	31.00

NOTE: Refer to Page LPD5 for Molded hub detail
Refer to Page LPD5-1 for Fabricated hub detail