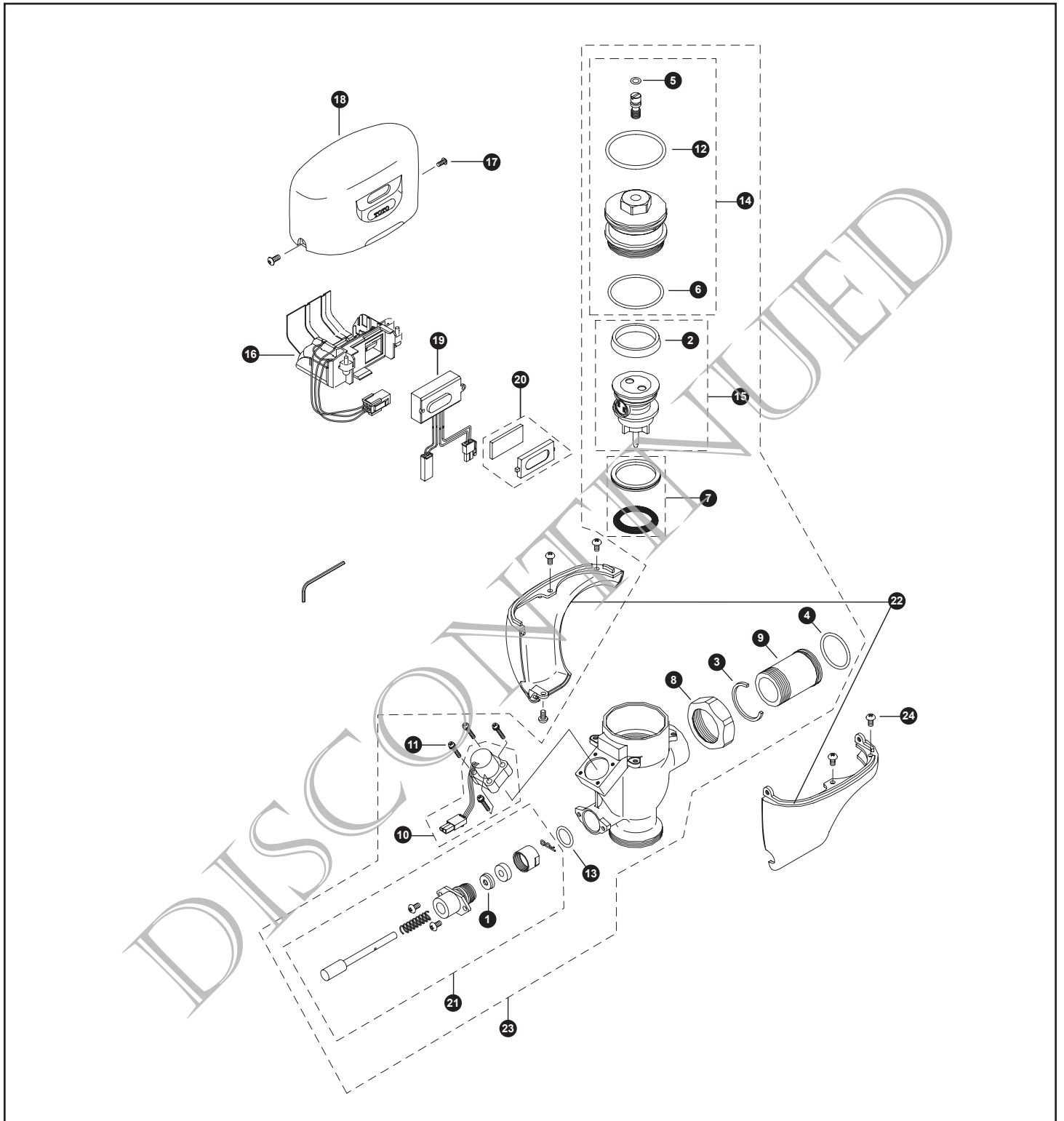


Reliance Commercial Line
Sensor Toilet Flush Valve, Exposed 3.5 Gpf
Battery Powered (6V DC)



**Reliance Commercial Line
Sensor Toilet Flush Valve, Exposed 3.5 Gpf
Battery Powered (6V DC)**

Item	Part	Description
1	TH302RV100	Gaskets (U-Packing)
2	TH305SV103	U-Packing (For Piston)
3	TH305SV105	Locking Rings
4	TH305SV106	O-Rings (Tail Piece)
5	TH305SV111	O-Rings (Cap Screw)
6	TH305SV112	O-Rings (Valve Guide)
7	TH321	Seat Packing Set
8	TH305SV113	Nut
9	TH305SV114	Tail Piece
10	TH559EDV300	Solenoid Unit & Diaphragm Assembly
11	TH559EDV301	Double Sems Screws M3
12	TH559EDV302	O-Ring (Valve Cap)
13	TH559EDV303	O-Ring (Push Rod)
14	TH559EDV304	Valve Cap Assembly - Toilet
15	TH559EDV307R	Piston Assembly (1.0GPF & 3.5GPF)
16	TH559EDV308	Battery Case - DC
17	TH559EDV310	Hex Socket Pan Head Cap Screw Set
18	TH559EDV311	Top Cover DC Type
19	TH559EDV313	Sensor Controller - DC Toilet
20	TH559EDV317	Glass & Packing Set
21	TH559EDV319	Push Rod Assembly
22	TH559EDV320	Lower Toilet Cover Set
23	TH559EDV323	Valve Body for Exposed (Toilet 3.5 GPF)
24	TH559EDV325	Screw Set 8-32 UNC

Vacuum Breaker Sets

VB9CP-32 Exposed - Top Spud (1-1/2" Outlet)

Note: For additional information, refer to the individual vacuum breaker parts sheets.

Note: Allen Wrench 3/32" is for reference purposes only.

MODEL LEGEND

- T - Fitting
- E - Electronic
- W - Toilet 3.5
- 1 - Exposed
- D - DC Battery
- N - Neutral Rough-In
- C - Chrome Finish
- R - Revision
- 3 - 1-1/2" Outlet
- 2 - Top Spud