

# CHARLOTTE

## PIPE AND FOUNDRY COMPANY®

### Certifications

This is to verify that products manufactured by Charlotte Pipe and Foundry, Cast Iron Division, are manufactured in the United States and conform to the following standards:

#### **SERVICE HUB AND SPIGOT PIPE AND FITTINGS**

All cast iron soil pipe and fittings shall be marked with the collective trademark of the Cast Iron Soil Pipe Institute (CISPI).  
ASTM A 74  
Listed by NSF® International to the UP Code  
ISO 9001:2015 Certified

#### **EXTRA HEAVY HUB AND SPIGOT PIPE AND FITTINGS**

All cast iron soil pipe and fittings shall be marked with the collective trademark of the Cast Iron Soil Pipe Institute (CISPI).  
ASTM A 74  
Listed by NSF® International to the UP Code  
ISO 9001:2015 Certified

#### **NO-HUB PIPE AND FITTINGS**

All cast iron soil pipe and fittings shall be marked with the collective trademark of the Cast Iron Soil Pipe Institute (CISPI).  
CISPI Standard 301  
ASTM A 888  
Listed by NSF® International to the UP Code  
ISO 9001:2015 Certified

#### **NO-HUB STANDARD COUPLINGS**

CISPI Standard 310  
ASTM C 1277  
Certified by NSF® International

#### **NO-HUB HEAVY DUTY (MD) COUPLINGS**

ASTM C 1540  
Factory Mutual 1680

#### **NO-HUB HEAVY DUTY (HD) COUPLINGS**

ASTM C 1540  
Factory Mutual 1680

#### **COMPRESSION GASKETS**

ASTM C 564  
CISPI HSN 85

Very truly yours,



Hooper Hardison, President



Notary Public  
My commission expires July 02, 2022

LC-CI (10-15-19)

TERRI L WILSON  
NOTARY PUBLIC  
UNION COUNTY, NC  
My Commission Expires 7-2-2022



## Reference Standards Cast Iron

### AMERICAN SOCIETY FOR TESTING AND MATERIALS

ASTM	TITLE
A 74	SPECIFICATION FOR CAST IRON SOIL PIPE AND FITTINGS HUB AND SPIGOT (SERVICE AND EXTRA HEAVY)
SCOPE:	THIS SPECIFICATION COVERS CAST IRON PIPE AND FITTINGS USED IN SANITARY DRAIN, WASTE, AND VENT (DWV), SEWER, AND STORM DRAINAGE APPLICATION. THIS SYSTEM IS INTENDED FOR USE IN NONPRESSURE APPLICATIONS.
C 564	SPECIFICATION FOR RUBBER GASKETS FOR CAST IRON SOIL PIPE AND FITTINGS
SCOPE:	THIS SPECIFICATION COVERS PREFORMED RUBBER GASKETS USED TO SEAL JOINTS IN CAST IRON SOIL PIPE AND FITTINGS.
C 1277	SPECIFICATION FOR COUPLING FOR USE IN CONNECTION WITH HUBLESS CAST IRON PIPE AND FITTINGS FOR SANITARY AND STORM DRAIN, WASTE, AND VENT PIPING APPLICATION (REGULAR HUBLESS COUPLING)
SCOPE:	THE PURPOSE OF THIS SPECIFICATION IS TO ESTABLISH CRITERIA FOR MATERIAL DIMENSIONS AND TOLERANCES FOR ONE TYPE OF COUPLING USED IN HUBLESS CAST IRON SOIL PIPE AND FITTING FOR SANITARY AND STORM DRAIN, WASTE AND VENT PIPING APPLICATIONS.
C 1540	SPECIFICATION FOR SHIELDED COUPLINGS JOINING HUBLESS CAST IRON SOIL PIPE AND FITTINGS (HEAVY DUTY COUPLINGS)
SCOPE:	THIS SPECIFICATION COVERS THE EVALUATION OF THE PERFORMANCE OF SHIELDED HUBLESS COUPLINGS TO JOIN CAST IRON SOIL PIPE AND FITTINGS.

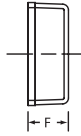
### CAST IRON SOIL PIPE INSTITUTE

CISPI	TITLE
301	SPECIFICATION FOR HUBLESS CAST IRON SOIL PIPE AND FITTINGS FOR SANITARY AND STORM DRAIN, WASTE, AND VENT PIPING APPLICATIONS
SCOPE:	THE PURPOSE OF THIS STANDARD IS TO ESTABLISH STANDARDS COVERING MATERIAL, DIMENSIONS, AND TOLERANCE FOR PIPE AND FITTINGS FOR HUBLESS CAST IRON SANITARY AND STORM DRAIN, SANITARY WASTE, AND VENT PIPING APPLICATIONS.
310	SPECIFICATION FOR COUPLING FOR USE IN CONNECTION WITH HUBLESS CAST IRON PIPE AND FITTINGS FOR SANITARY AND STORM DRAIN, WASTE, AND VENT PIPING APPLICATION (REGULAR HUBLESS COUPLING)
SCOPE:	THE PURPOSE OF THIS SPECIFICATION IS TO ESTABLISH CRITERIA FOR MATERIAL DIMENSIONS AND TOLERANCES FOR ONE TYPE OF COUPLING USED IN HUBLESS CAST IRON SOIL PIPE AND FITTING FOR SANITARY AND STORM DRAIN, WASTE AND VENT PIPING APPLICATIONS.

**PART NO. NH 50**

**Blind Plug**

Size	F	Weight
1 1/2	1 3/4	0.6
2	1 3/4	0.7
3	1 3/4	1.1
4	1 3/4	2.0
5	1 3/4	2.9
6	1 3/4	3.2
8	2 1/4	6.5
10	3	14.7
12	3 1/2	17.6
15	3 1/2	28.0

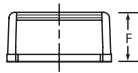


**PART NO. NH 52**

**Tapped Ferrule Less Brass Plug  
and PART NO. NH 52S**

**Tapped Ferrule with Southern  
Raised-Head Brass Plug Installed**

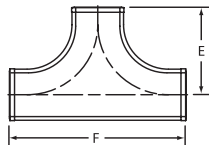
Size	F	IPS Tapping	Weight
2	2 3/16	1 1/2	0.9
3	2 3/16	2 1/2	1.9
4	2 3/16	3 1/2	2.5
5	4 1/2	4	6.5
6	4 1/2	5	8.0
8	4 1/2	6	12.1



**PART NO. NH 53**

**Single Two-Way Cleanout**

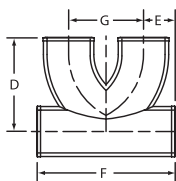
Size	E	F	Weight
4	7 1/2	15	16.0



**PART NO. NH 53A**

**Two-Way Cleanout**

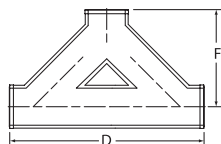
Size	D	E	F	G	Weight
4	8 1/4	2 3/4	12	6 1/2	15.0



**PART NO. NH 54**

**Two-Way Baffle Cleanout**

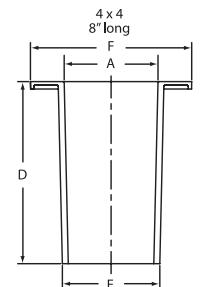
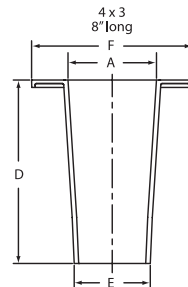
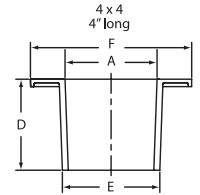
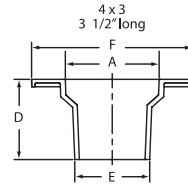
Size	D	F	Weight
3 x 3 x 4	15	9	14.2
4 x 4 x 4	18 3/8	9 1/2	22.0



**PART NO. NH 56**

**Notched and Slotted Closet Collar**

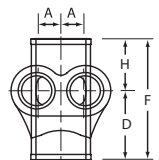
Size	D	E	F	A	Weight
4 x 3	3 1/2	3 3/8	7 1/4	4 7/32	3.3
4 x 3	8	3 27/64	7 1/4	4	6.1
4 x 4	4	4 3/8	7 1/4	4 9/64	4.7
4 x 4	8	4 3/8	7 1/4	4 7/32	7.0



**PART NO. NH 57**

**Horizontal Twin Tapped Tee**

Size	A	D	F	H	Weight
3 x 1 1/2	1 3/8	4	7	3	7.3
4 x 1 1/2	1 3/8	4	7	3	8.0



**PART NO. NH 457**

**Vented Closet Tee  
with 2" Top Vent**

(Left or Right; Designed for use below the floor;  
Fitting does not require a baffle)

Size	B	C	D	E	F	G	Wt.
4x4x2x4(L)	4 1/4	5 1/4	3 3/4	4	10 1/2	3 3/4	12.1
4x4x2x4(R)	4 1/4	5 1/4	3 3/4	4	10 1/2	3 3/4	11.

