



FEA4X Product Specifications

APARTMENT FAN COILS WITH FACTORY INSTALLED 5, 7, & 11 kW ELECTRIC HEAT R-410A SYSTEMS 1-1/2 THRU 3 TONS

FEATURES

- TXV metering device factory installed on all models
- Upflow only
- 22" (559mm) wide galvanized steel cabinet fits between studs (24" (610mm) stud spacing)
- All electrical and refrigerant lines enter through top of cabinet
- Service access through front of cabinet
- Primary and secondary drain fittings exit bottom, left, or right side of cabinet
- Replaceable air filter factory supplied with all models
- Copper tube / aluminum fin coil
- Sweat connections
- High efficiency ECM motor on all models
- 5 amp automotive type fuse inline on harness
- Time delay relay (TDR) programmed in motors
- Decorative grille available as accessory
- Factory installed electric heater packages from 5 kW – 11 kW
- Units tested and certified by manufacturer to achieve a 2% or less leakage rate at 1.0 inch water column
- 208/230-1-60 supply voltage



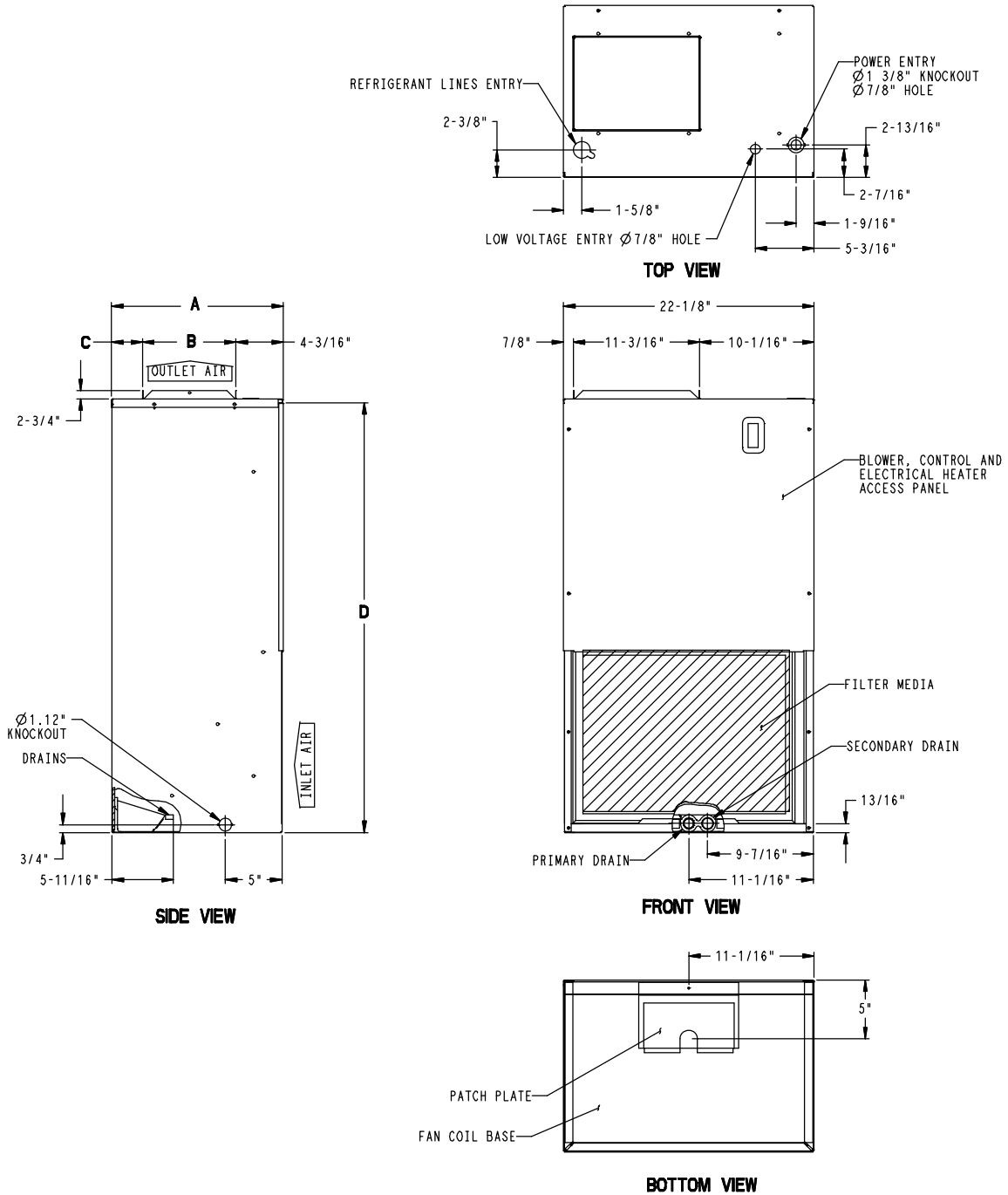
Use of the AHRI Certified TM Mark indicates a manufacturer's participation in the program. For verification of certification for individual products, go to www.ahridirectory.org.



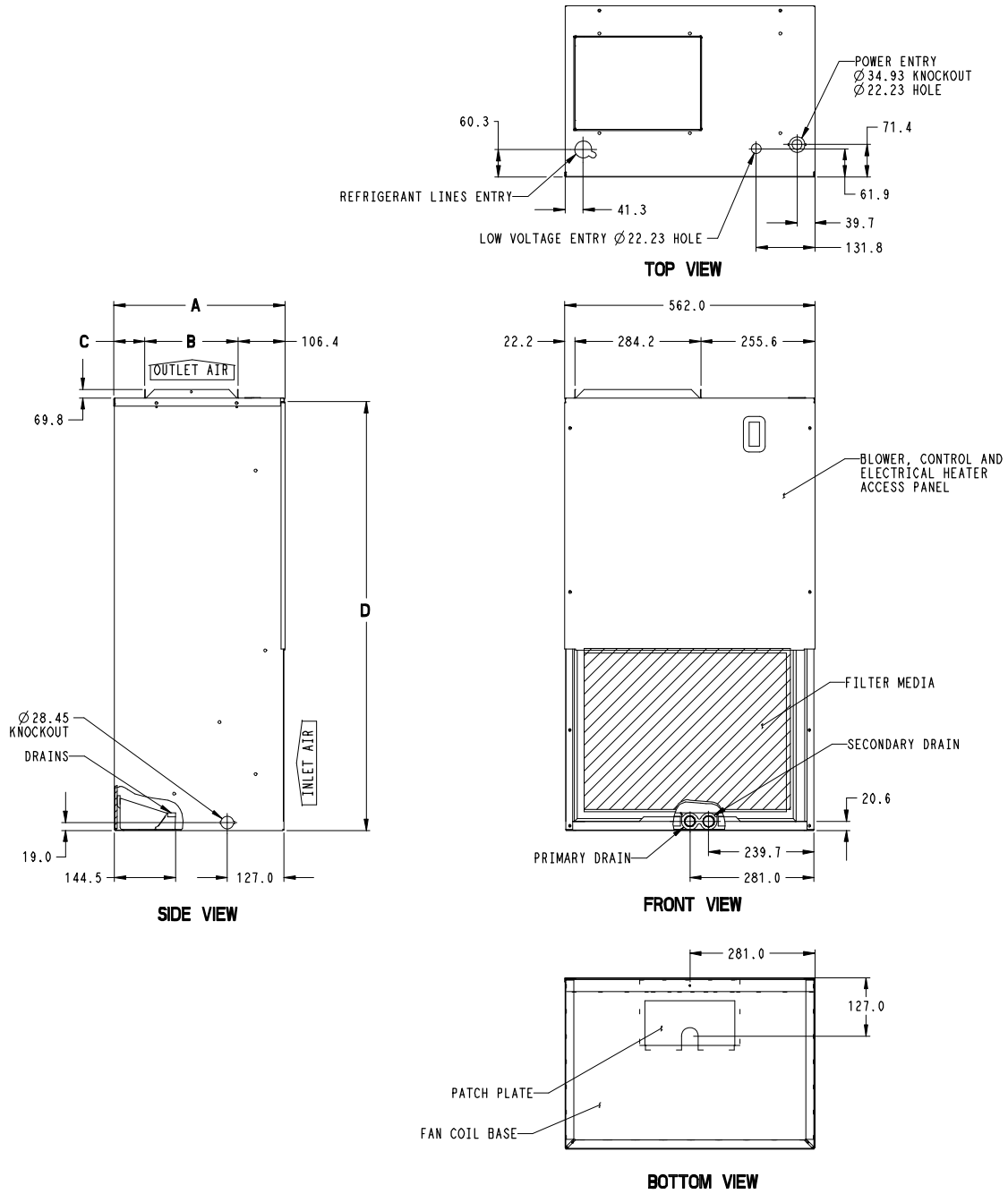
Model	Tons	Heat (kW)	Nom. CFM	Dimensions H x W x D in. (mm)	Filter Size in. (mm)	Ship. Weight lbs. (kg)
FEA4X1805A	1-1/2	5	600	38-1/16 x 22-1/8 x 15-3/16 (967 x 562 x 386)	16 x 20 x 1 (406 x 508 x 25)	90 (41)
FEA4X1807A	1-1/2	7	600			90 (41)
FEA4X2405A	2	5	800			92 (42)
FEA4X2407A	2	7	800			92 (42)
FEA4X2411A	2	11	800			92 (42)
FEA4X3005A	2-1/2	5	1000	43-3/16 x 22-1/8 x 18-3/8 (1097 x 562 x 467)	20 x 20 x 1 (508 x 508 x 25)	105 (48)
FEA4X3007A	2-1/2	7	1000			105 (48)
FEA4X3011A	2-1/2	11	1000			105 (48)
FEA4X3605A	3	5	1200			110 (50)
FEA4X3607A	3	7	1200			110 (50)
FEA4X3611A	3	11	1200			110 (50)

FAN COIL MODEL NUMBER IDENTIFICATION GUIDE									
	F	E	A	4	X	18	05	A	1
F = Fan Coil		MOTOR TYPE		REFRIGERANT		NOMINAL CAPACITY		HEAT	
E = High Efficiency ECM		A = Apartment		4 = R-410A		X = TXV		18 = 18,000 BTUH = 1-1/2 tons	
24 = 24,000 BTUH = 2 tons		30 = 30,000 BTUH = 2-1/2 tons		36 = 36,000 BTUH = 3 tons		05 = kW electric heat (factory installed)		07 = kW electric heat (factory installed)	
11 = kW electric heat (factory installed)		Sales Code		Engineering Revision					

ACCESSORY MODEL NUMBER IDENTIFICATION GUIDE							
	A	M	WK	001	WG	A	1
A = Accessory		PRODUCT TYPE		Product Identifier Codes			
C = Cooling		H = Heating		M = Multi-use (Cooling and/or Heating)		X = Special	
Series		Product Identifier		Product Identifier (see below)		Sales Code	
Engineering Revision							
WG = Louvered Wall Panel with Frame							



DIMENSIONAL DATA Inches (English)				
Model Size	A	B	C	D
FEA4X18	15-3/16	8-1/4	2-3/4	38-1/16
FEA4X24	15-3/16	8-1/4	2-3/4	38-1/16
FEA4X30	18-3/8	9-1/4	5	43-3/16
FEA4X36	18-3/8	9-1/4	5	43-3/16



DIMENSIONAL DATA mm (SI Metric)

Model Size	A	B	C	D
FEA4X18	386	210	70	967
FEA4X24	386	210	70	967
FEA4X30	467	235	127	1097
FEA4X36	467	235	127	1097

PHYSICAL DATA				
Model Size	FEA4X18	FEA4X24	FEA4X30	FEA4X36
TXV factory installed, hard shut-off, bi-flow type for heat pump application				
TXV Size	2 ton		3 ton	
Blower Data (direct drive)				
CFM (nominal)	600	800	1000	1200
Motor type	High Efficiency (ECM)			
HP	1/3			1/2
Filter Data (replaceable filter factory supplied with unit)				
Filter Size	16 x 20 x 1 (406 x 508 x 25)		20 x 20 x 1 (508 x 508 x 25)	
Coil Data (Slope)				
Face area ft ² (m ²)	2.23 (0.21)	2.72 (0.25)	3.46 (0.32)	
Connections				
Refrigerant Liquid	3/8" (9.5mm) sweat			
Refrigerant Suction	3/4" (19mm) sweat			
Condensate Drain	3/4" (19mm) female NPT, Primary and Secondary			

ELECTRICAL DATA					
208 / 230V, single phase, 60 Hz					
Model	Motor Full Load Amps (FLA)	Factory Installed Heater Model	Heater Amps 208V / 230V	Minimum Circuit Ampacity (MCA) 208V / 230V	Maximum Fuse/Circuit Breaker Amps (MOCP) 208V / 230V
FEA4X1805	2.8	5 kW	18.1 / 19.8	26.1 / 28.3	30 / 30
FEA4X1807	2.8	7 kW	27.1 / 30.0	37.4 / 41.0	40 / 50
FEA4X2405	2.8	5 kW	18.1 / 19.8	26.1 / 28.3	30 / 30
FEA4X2407	2.8	7 kW	27.1 / 30.0	37.4 / 41.0	40 / 50
FEA4X2411	2.8	11 kW	39.8 / 43.8	53.3 / 58.3	60 / 60
FEA4X3005	2.8	5 kW	18.1 / 19.8	26.1 / 28.3	30 / 30
FEA4X3007	2.8	7 kW	27.1 / 30.0	37.4 / 41.0	40 / 50
FEA4X3011	2.8	11 kW	39.8 / 43.8	53.3 / 58.3	60 / 60
FEA4X3605	4.1	5 kW	18.1 / 19.8	27.8 / 29.9	30 / 30
FEA4X3607	4.1	7 kW	27.1 / 30.0	39.0 / 42.6	40 / 50
FEA4X3611	4.1	11 kW	39.8 / 43.8	54.9 / 59.9	60 / 60

AIRFLOW PERFORMANCE - CFM at a given Speed and Static reading							
Model Size	Blower Speed	Measured Static Pressure, inlet to outlet (inches water column)					
		0.10	0.20	0.30	0.40	0.50	0.60
FEA4X18	High	995	955	910	862	811	-
	Low	738	711	678	641	600	-
FEA4X24	High	950	908	861	810	754	693
	Low	732	699	662	621	576	527
FEA4X30	High	1128	1082	1030	973	911	845
	Low	1053	1011	964	911	854	791
FEA4X36	High	1408	1355	1295	1227	1152	1068
	Low	1191	1157	1113	1061	1000	931

NOTES:

1. Airflow based on dry coil at 230V with factory approved filter and 2 element electric heater.
2. Not recommended for use above 0.60 inches water column external static pressure.
3. Shaded cells indicate airflow is greater than 450 CFM per ton.

STATIC PRESSURE CORRECTION FROM DRY TO WET COIL (inches of water column)									
AIRFLOW PERFORMANCE chart was developed using fan coils with DRY coils.									
When taking a static reading across a WET coil, adjust the static pressure numbers in the AIRFLOW PERFORMANCE chart by adding the values in this table.									
Model Size	CFM								
	500	600	700	800	900	1000	1100	1200	1300
FEA4X18	0.034	0.049	0.063	-	-	-	-	-	-
FEA4X24	0.021	0.033	0.045	0.056	0.068	-	-	-	-
FEA4X30	-	-	-	0.056	0.068	0.079	0.090	-	-
FEA4X36	-	-	-	-	-	0.055	0.064	0.073	0.081

STATIC PRESSURE CORRECTION FOR ELECTRIC HEATERS (inches of water column)

AIRFLOW PERFORMANCE chart was developed using fan coils with 2–element electric heaters. When using a 1–element electric heater or no electric heater, adjust the static pressure numbers in the AIRFLOW PERFORMANCE chart by **subtracting** the values in this table.

Electric Heater	CFM							
	400	500	600	700	800	900	1000	1100
5 kW	0.007	0.010	0.015	0.025	0.035	0.55	0.070	0.080
7 kW and 11 kW	0.010	0.012	0.018	0.028	0.050	0.075	0.100	0.130

ACCESSORIES

Description	Part Number
Louvered Wall Panel (Decorative Grille) with Frame for model sizes 18, 24 (package of 6)	AMWK001WG
Louvered Wall Panel (Decorative Grille) with Frame for model size 30, 36 (package of 6)	AMWK002WG
Wall Mounting (Suspended) Brackets Kit	AMWK001MK