

### Features

- 23-gauge stainless steel
- Includes SilentShield® sound-absorption technology
- Single bowl, ledge back sink
- Top-mount, rolled rim
- Satin deck finish
- Luster bowl finish
- 25" (63.5 cm) x 22" (55.9 cm) x 6" (15.2 cm)

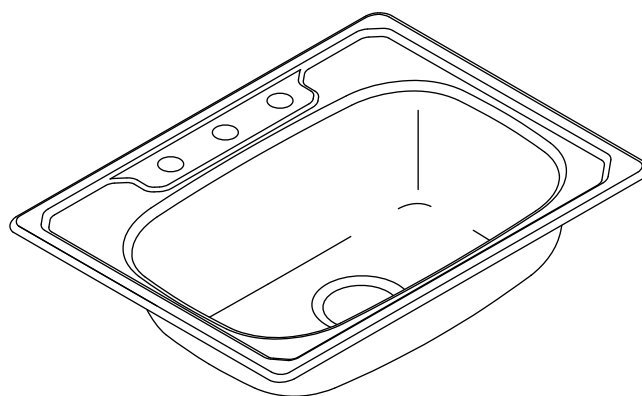
### Codes/Standards Applicable

Specified model meets or exceeds the following:

- ADA
- ASME A112.19.3/CSA B45.4
- ICC/ANSI A117.1

## TOP-MOUNT KITCHEN SINK 14631

ADA



### Colors/Finishes

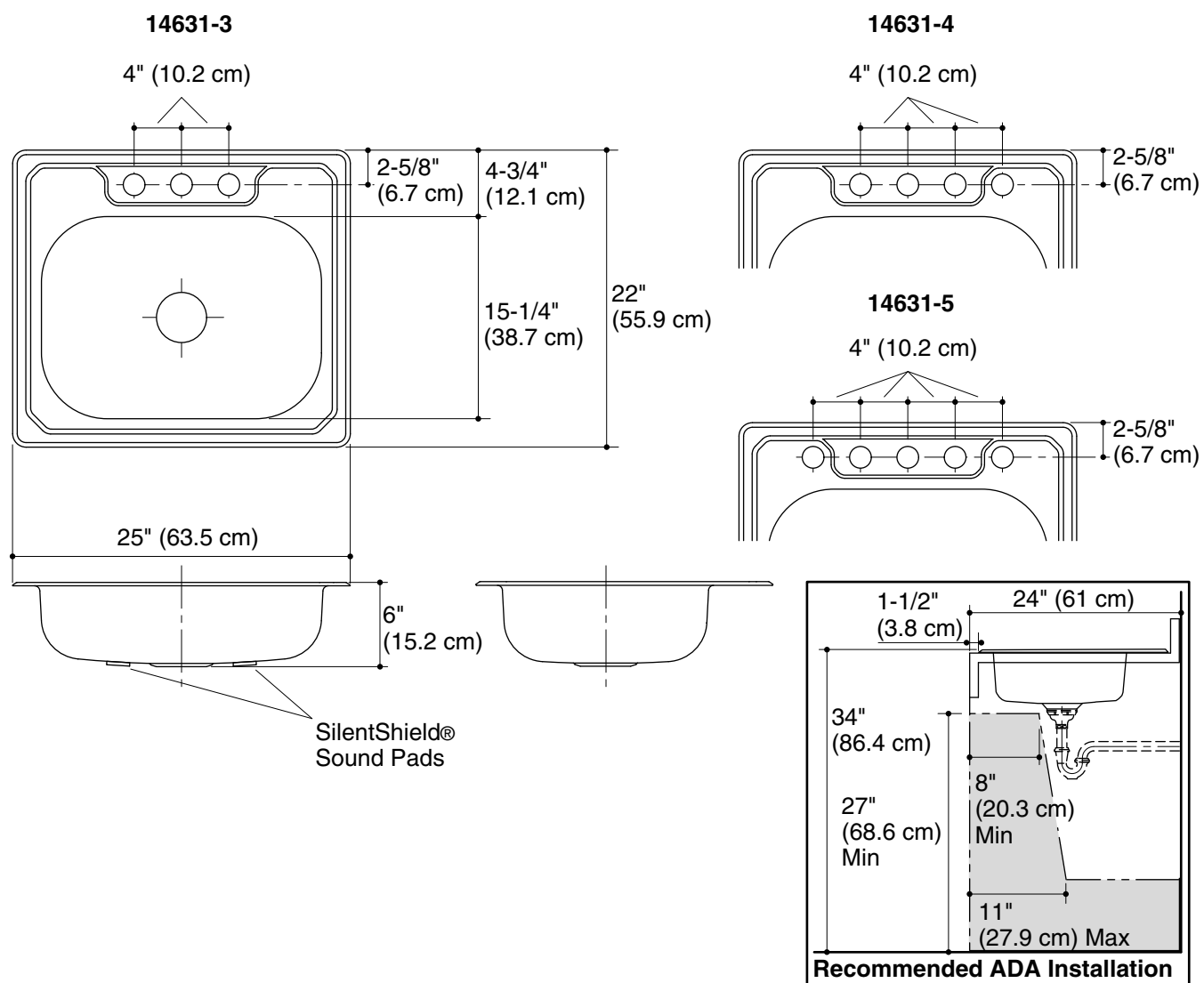
- NA: None applicable

### Specified Model

Model	Description	Faucet Holes	Quantity	Bowl Depth	Colors/Finishes
14631-3	Top-mount kitchen sink (shown)	3	1	6" (15.2 cm)	<input type="checkbox"/> NA
14631-4	Top-mount kitchen sink	4	1	6" (15.2 cm)	<input type="checkbox"/> NA
14631-5	Top-mount kitchen sink	5	1	6" (15.2 cm)	<input type="checkbox"/> NA
14631-3F	Top-mount kitchen sink, multi-pack	3	40	6" (15.2 cm)	<input type="checkbox"/> NA
14631-4F	Top-mount kitchen sink, multi-pack	4	40	6" (15.2 cm)	<input type="checkbox"/> NA
14631-5F	Top-mount kitchen sink, multi-pack	5	40	6" (15.2 cm)	<input type="checkbox"/> NA

## Technical Information

Fixture*:	
Sink	
Cutout size	24-1/2" (62.2 cm) x 21-1/2" (54.6 cm)
Drain holes	3-5/8" (9.2 cm) D.
Faucet holes	1-7/16" (3.7 cm) D.
* Approximate measurements for comparison only.	



## Product Diagram