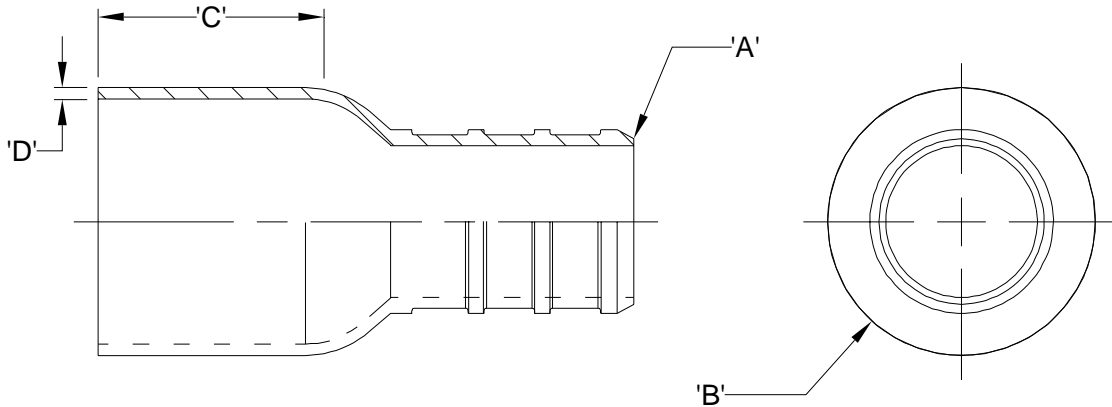




Copper Female Sweat X PEX Adapter QQ__CX Specification Sheet

Tag _____

Dimensional Data: Inches and [mm] are subject to manufacturing tolerances and change without notice.



Part Number	Description	'A'	'B'	'C'	'D'
QQ750CX	1/2" Female Sweat x 1/2" Barb	1/2" Barb	0.69" [17.5]	0.50" [12.7]	0.03" [0.8]
QQ770CX	3/4" Female Sweat x 1/2" Barb	1/2" Barb	0.95" [24.0]	0.75" [19.1]	0.03" [0.8]
QQ775CX	3/4" Female Sweat x 3/4" Barb	3/4" Barb	0.95" [24.0]	0.75" [19.1]	0.03" [0.8]
QQ800CX	1" Female Sweat x 1" Barb	1" Barb	1.21" [30.7]	0.91" [23.1]	0.04" [1.0]

Engineering Specification: Zurn PEX® Copper Female Sweat x Zurn PEX® Adapter. The QQ__X adapter solders directly to copper tubing. These fittings, as a system with Zurn PEX® tube, are pressure rated at 160 PSI at 73°F, 100 PSI at 180°F, and 80 PSI at 200°F. These fittings are listed as complying with the following standards: NSF/ANSI Standard 61, CSA B137.5, and ASTM F1807.

Accessories

- ___ QCLP3X 1/2" QuickClamp® Crimp Ring
- ___ QCLP4X 3/4" QuickClamp® Crimp Ring
- ___ QCLP5X 1" QuickClamp® Crimp Ring
- ___ QCR3X 1/2" Copper Crimp Ring
- ___ QCR4X 3/4" Copper Crimp Ring
- ___ QCR5X 1" Copper Crimp Ring
- ___ QSOET3X 1/2" Stainless Steel Crimp Ring
- ___ QSOET4X 3/4" Stainless Steel Crimp Ring
- ___ QSOET5X 1" Stainless Steel Crimp Ring

Rev.	Date: 11/23/2009	C.N. No.110449
Dwg. No. 84398		Prod. No. QQ__CX