

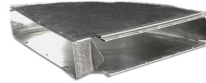
WALLSTACK FITTINGS — SX21, SX23, SX24, SX25, SX27



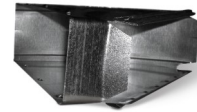
**SX21 VERT
ELBOW**



**SX23 VERT
ANGLE**



**SX25 HORIZ
ELBOW**



**SX27 HORIZ
ANGLE**



**SX24 RE-
VERSE EL-**

PRODUCT CHARACTERISTICS

Standard 28/26GA galvanized steel (ASTM A653)
One end with stack clips installed, other button-punch
Riveted construction, 4 Pc design

PRODUCT PART NUMBERING

SX21xxyy, SX23xxyy, SX24xxyyA, SX25xxyy, SX27xxyy

Where: xx = Stack Height (inches: 03 = 3.25", 02 = 2.25")
yy = Stack Width (inches: 10", 12" & 14")
A = L (Left), R (Right)

Example: SX210312

Wallstack VERTICAL ELBOW 3.25" x 12"

PROJECT: _____	COMPANY: _____	DATE : _____
LOCATION: _____	SUBMITTED BY: _____	