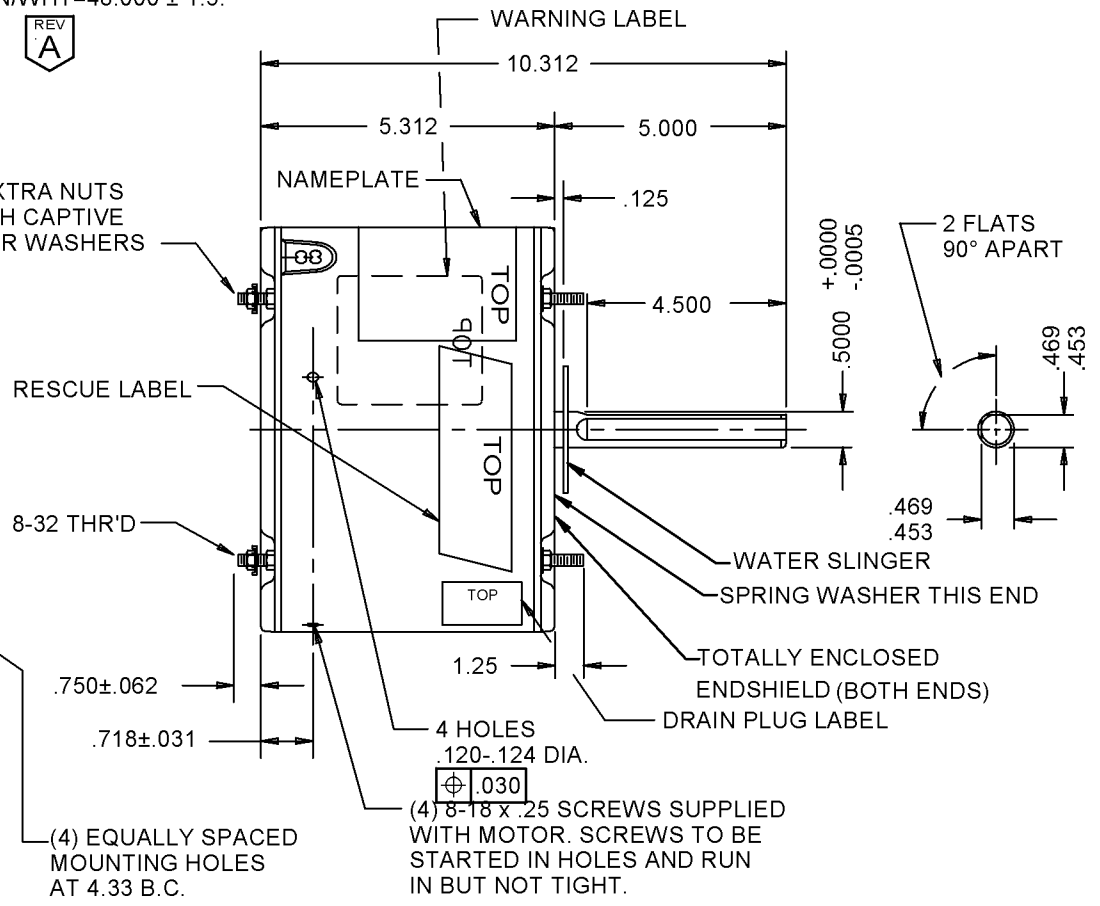


5 LEADS, #18, .062 THICK INSUL. TO EXTEND BEYOND MOTOR:
 BRN=48.000 ± 1.5, BLK=48.000 ± 1.5,
 RED=48.000 ± 1.5, WHT=48.000 ± 1.5,
 BRN/WHT=48.000 ± 1.5.

REV
A

NOTE: INSTRUCTION FORM &
 (4) SCREWS INCLUDED IN CARTON



(4) EQUALLY SPACED MOUNTING HOLES AT 4.33 B.C.

© EMERSON ELECTRIC CO. 11/1/2005

| MODEL | REF. | CUSTOMER | HP. | VOLTS | AMPS | HZ. | R.P.M. | ROTATION | CUST. PT. NO. | |
|--|----------------------------|----------------------------------|-------------------------|-----------|--|-----|-------------|--------------------|---------------|--|
| K55HXWDB-0372 | | STANDARD | 1/3 - 1/6 | 208 - 230 | 1.9 / 1.2 | 60 | 825 / 2SPD | CCW LEAD END REV. | 5464 | |
| SHEET NUMBER 1 of 1 | REV -- | REVISION RECORD FOR: ECO 228189 | | | INFORMATION DISCLOSED ON THIS DOCUMENT IS CONSIDERED PROPRIETARY AND SHALL NOT BE REPRODUCED OR DISCLOSED WITHOUT WRITTEN CONSENT OF EMERSON ELECTRIC COMPANY. | | | | | |
| REVISION DATE 11-4-05 | | LEADS LENGTH WAS 36.000 | | | | | | | | |
| ALL DIMENSIONS ARE FOR REFERENCE ONLY UNLESS TOLERANCE IS GIVEN. | | | | | | | | | | |
| ISSUED BY R. GUZMAN | REVIEWED BY T. SARANITA | ENGINEER APPROVED T. SARANITA | TITLE ASSEMBLED VIEW | | | | CODE V01 | ITEM NO. 762961 | SIZE A | |