

## Model 550, 660 & Flapper Installation Instructions

Visit our website: [www.goMJSI.com](http://www.goMJSI.com) to view an installation video, and get plumber's tips, frequently asked questions and troubleshooting advice.

There are no special skills required to install this product. If water line or toilet appear to be leaking after installation, you should call a plumber immediately.

NOTE: SAVE INSTRUCTIONS FOR FUTURE USE.

### PLUMBER'S TIP:

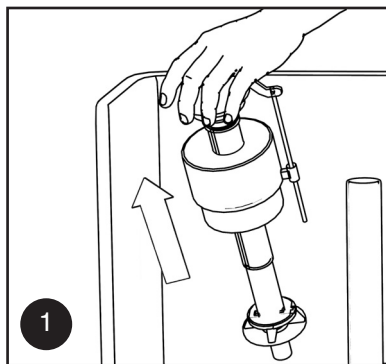
To check if you have a leaky flapper, slide the HydroClean Float Lock in the off position after the tank is full of water. Do not use the toilet for 1 hour. After the hour, recheck the water level inside the tank. If the water level has dropped, you have a bad flapper.

### PLUMBER'S TIP:

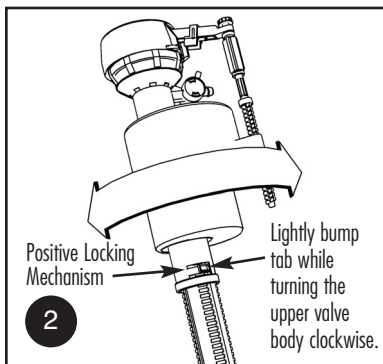
It is recommended to disregard the Cone Washer and Supply Nut and replace the supply line with a new braided stainless steel flexible supply.

### PLUMBER'S TIP:

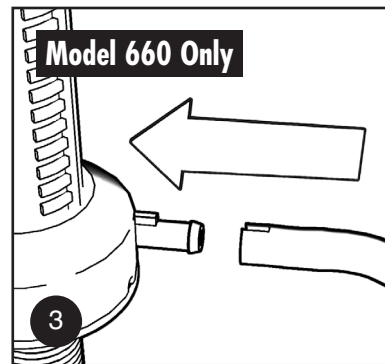
Anytime you turn off the main the water supply to the building, debris can get into your faucets, aerators and toilet fill valves when the water is turned back on. To prevent this problem, engage HydroClean's patented Float Lock and run the bath tub until the water is clear, then disengage the Float Lock to fill the tank.



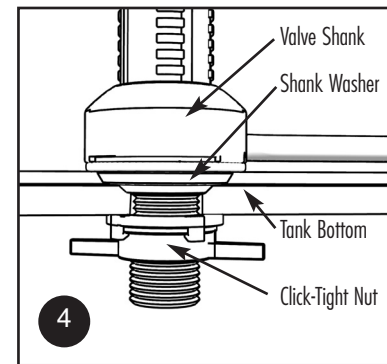
Shut water off, flush toilet to empty tank, and remove old toilet fill valve.



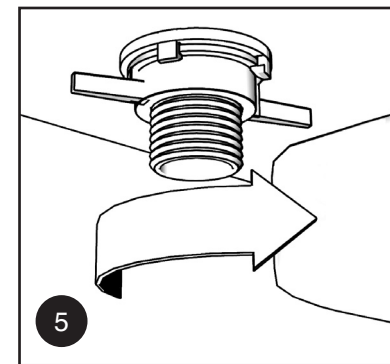
Familiarize yourself with the Positive Locking Mechanism and note how it locks the valve into position. No need to adjust now. HydroClean adjusts after installation.



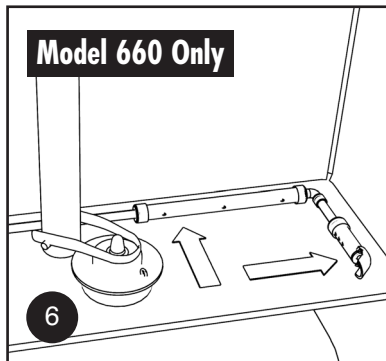
Push J-Tube over bottom port of valve, making sure that grooves are lined up. Place valve in tank making sure the J-Tube lays flat on the bottom and up against the back and right hand side wall.



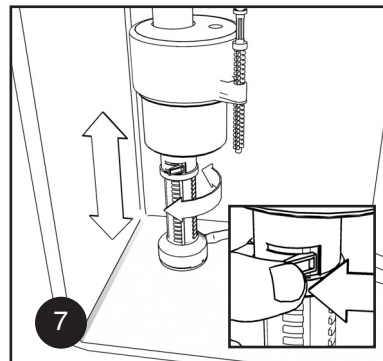
Position valve inside of tank making sure the rubber shank washer is seated as shown.



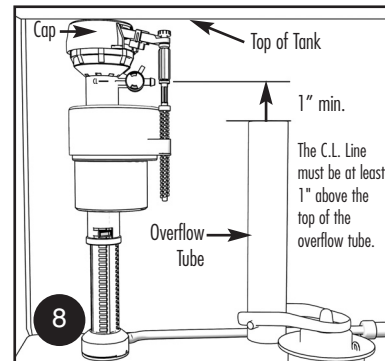
Our Click-Tight™ nut should only be hand tightened and should make 1-3 audible clicks to signal it is tight. The wings are engineered to bend if the nut is overtightened, preventing leaks and cracking.



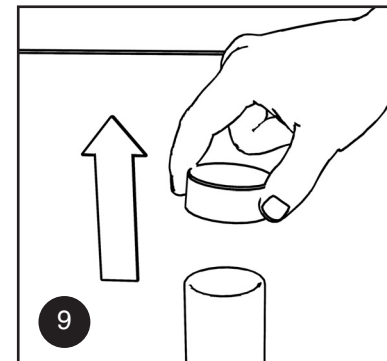
Make sure the J-Tube lays flat on the bottom of the tank, and is pushed up against the back and the right hand side of the tank.



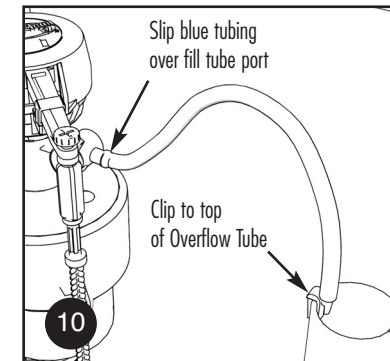
Lightly bump tab while turning the upper valve body clockwise 1/4 turn, then adjust the valve up or down to the proper height.



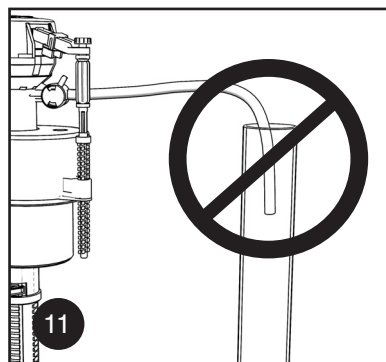
Adjust the float height so that the top of the cap is even with the top of the tank. This height should allow the final float adjustment to be achieved with the thumb screw. Lock valve into place by turning upper body counterclockwise.



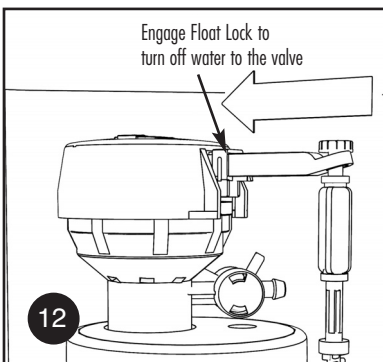
If the overflow tube has a cap remove it and discard before installing the bowl refill tubing.



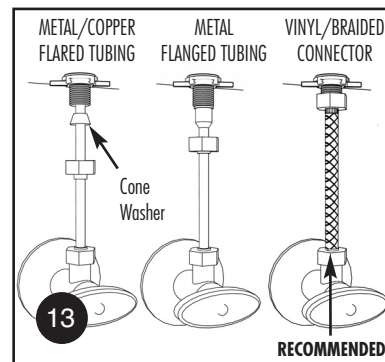
Install the single blue tubing with the clip, and attach clip to the overflow tube. Trim the blue tubing to size to prevent kinking and install tubing onto the Mini-Valve refill port.



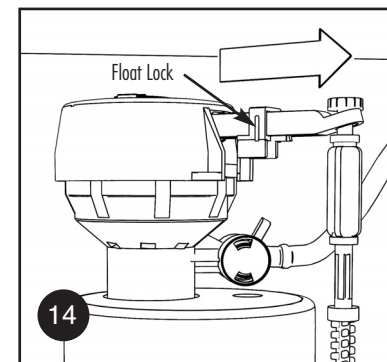
NOTE: Refill tubing must be positioned above the overflow tube. DO NOT INSERT REFILL TUBING DOWN THE OVERFLOW PIPE. This improper installation violates the plumbing code and could result in a leak.



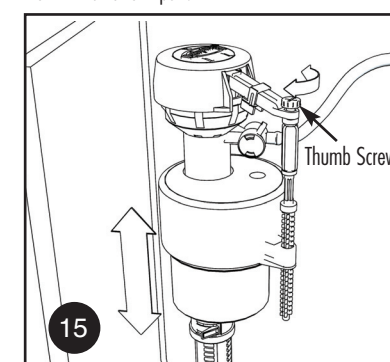
If you have turned off the buildings water supply, make sure the Float Lock is engaged before attaching the water supply to the tank.



Determine the type of water supply line that you have. DO NOT OVERTIGHTEN. Only use the cone washer and coupling if you have a metal/copper flared tubing. DO NOT USE PLUMBER'S PUTTY TO SEAL FITTINGS.



Turn on the water and run the bath tub water to flush debris. When water is clear, disengage float lock to fill tank.



If you have turned off the water at the toilet, disengage the float lock and turn on the water supply to fill the tank. Use the thumbscrew to adjust the proper water level inside the tank as indicated on the tank or 1/2" to 1" below the overflow tube.

### GUARANTEE:

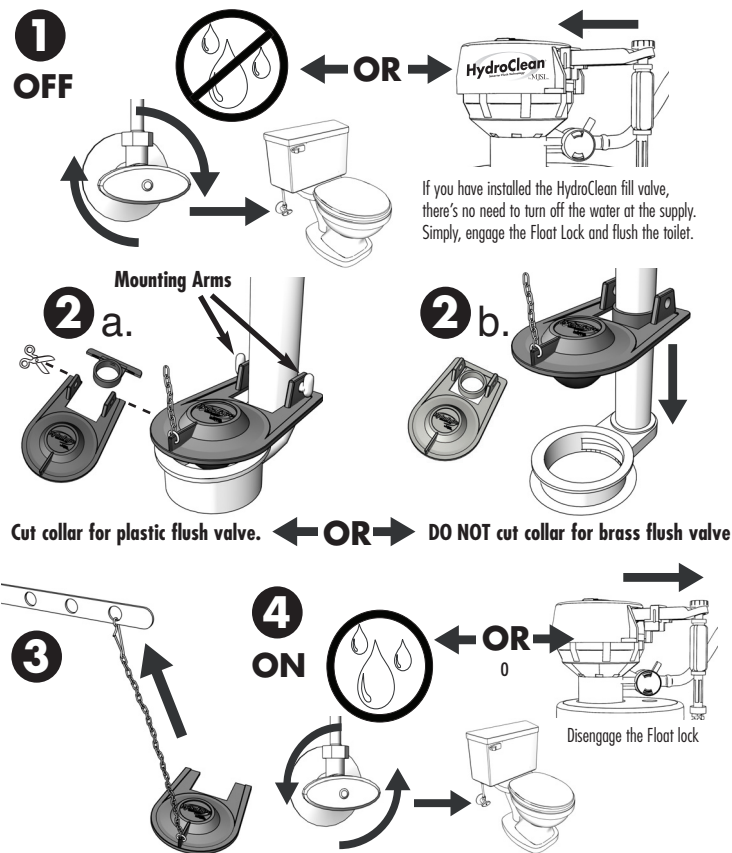
This MJSI, Inc. product is guaranteed to be free from defective materials and workmanship for a period of five years. Defective units returned to MJSI, Inc. will be replaced without charge.

MJSI, Inc. shall not be responsible or liable for any damages caused by products that were used in MJSI, Inc. valves that were not manufactured by MJSI, Inc. or damages caused by improper installation.

### WARNING

DO NOT USE IN-TANK DROP-IN TOILET BOWL COLORERS OR CLEANERS. Use of such products will RESULT IN DAMAGE to tank components and MAY CAUSE FLOODING and PROPERTY DAMAGE and VOID HYDROCLEAN WARRANTY. DO NOT overtighten nuts or tank/bowl may crack.

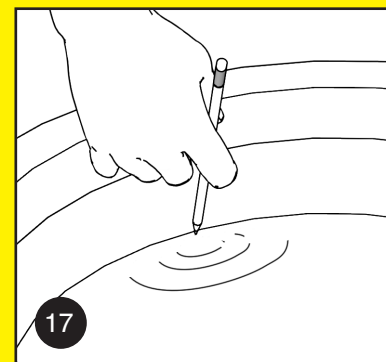
### Flapper Installation



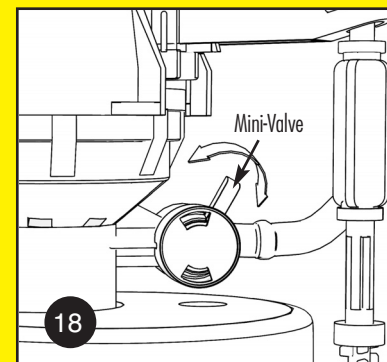
**PLUMBER'S TIP:**  
Taking the time to adjust the Mini-Valve for the proper amount of water added to the bowl can make your toilet up to 30% more efficient without effecting flushing power.



Slowly Add water to the bowl until it no longer raises, and wait 2 minutes for the excess water to runoff down the drain.



Use a pencil to mark 1/8" below water level in the bowl, then flush the toilet. If the valve is still filling the bowl after the water reaches the pencil mark, you will need to adjust the Mini-Valve to control the amount of water filling the bowl.



HydroClean ships with the Mini-Valve in the horizontal full open position. Turn counterclockwise to decrease the amount of water filling the bowl. Start with the valve in the middle position and adjust up or down until the tank shuts off close to the same time as the bowl hits the pencil mark.

Go to  
[www.goMJSI.com](http://www.goMJSI.com)  
for more  
Plumber's TIPS.

MJSI, Inc.  
Innovations in Water Conservation

205 Earl Rd., Suite 2 • Shorewood, IL 60404  
**888-goMJSI-1** (888-466-5741)

©2007 MJSI, Inc.

HC318R00