

## SPECIFICATIONS

# FIGURE 7203

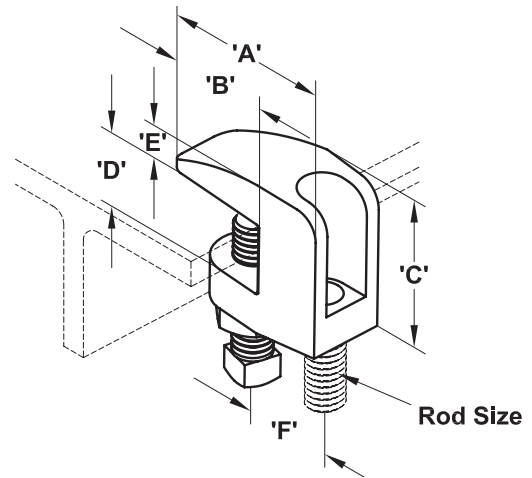
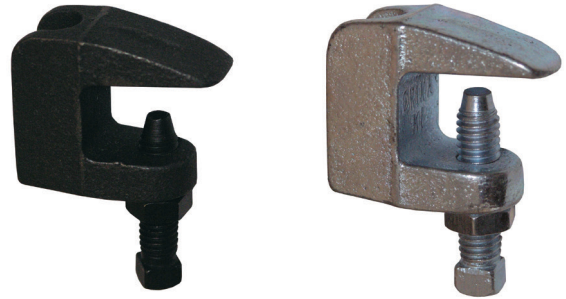
## BEAM CLAMPS



### JR. BEAM CLAMP

#### FEATURES

- Finish: Plain or zinc plated
- Material: Malleable Iron, ASTM A47 Grade 32510
- Per: MSS SP-58, type 19
- Hanger rod not included



#### REFERENCE CHART

Catalog Number	Finish	Rod Size	Max Load (lbs.)	Dimensions (in.)						Wt. (oz.)
				A	B	C	D	E	F	
FNW7203PC	Plain	3/8"-16*	560	1.88"	1.22"	1.56"	0.75"	0.41"	0.88"	4.94
FNW7203ZC	Zinc Plated	3/8"-16	560	1.88"	1.22"	1.56"	0.75"	0.41"	0.88"	4.94
FNW7203PD	Plain	1/2"-13	810	2.06"	1.20"	1.63"	0.75"	0.44"	0.97"	6.81
FNW7203ZD	Zinc Plated	1/2"-13	810	2.06"	1.20"	1.63"	0.75"	0.44"	0.97"	6.81
FNW7203PE	Plain	5/8"-11	1000	2.19"	1.20"	1.75"	0.75"	0.50"	1.06"	9.17
FNW7203PF	Plain	3/4"-10	1500	2.38"	1.20"	1.75"	0.75"	0.50"	1.06"	10.93

\* 3/8" Universal Design - Allows for use in an upright and inverted position on the top and bottom flange of beam.

**Note:** Do not overtighten the set screw or the clamp can be damaged. The set screw should be finger tight, then given approximately an additional 1/4 to 1/3 turn. The recommended set screw torque is 5 ft-lbs (60 in-lbs).