

SOCK-IT® PIPING METHOD FITTINGS

The Gruvlok® Sock-It® Piping Method provides a quick, secure and reliable method of joining plain-end steel pipe. Several Sock-It configurations are available: tees with NPT outlets, reducing run tees with NPT outlets, straight couplings, 90 elbows, straight tees and reducing elbows. Pressure energized elastomeric gaskets provide the Sock-It with a leak tight seal. Specially designed lock bolts secure the pipe in the Sock-It Fitting, providing a fast, dependable way of joining small diameter plain-end pipe.



Working pressure ratings shown are for reference only and are based on schedule 40 pipe. For the latest UL/ULC Listed and FM approved pressure ratings versus pipe schedule see www.anvilintl.com or contact your local Anvil Sales Representative.

See Installation & Assembly directions on page 174.

FITTING SIZE			
Nominal Size	O.D.	Nominal Size	O.D.
In./DN(mm)	In./mm	In./DN(mm)	In./mm
1/2	0.840	1 1/2	1.900
15	21.3	40	48.3
3/4	1.050	2	2.375
20	26.7	50	60.3
1	1.315	2 1/2	2.875
25	33.7	65	73.0
1 1/4	1.660		
32	42.4		

The Fitting Size Chart is used to determine the O.D. of the pipe that the fittings is to be used with. Gruvlok Fittings are identified by either the Nominal size in inches or the Pipe O.D. in mm.



For Listings/Approval Details and Limitations, visit our website at www.anvilintl.com or contact an Anvil® Sales Representative.

NOTE: All Sock-It® fittings are UL/ULC Listed and FM Approved for 175 psi working pressure when used to join XL Pipe and Dyna-Flow Pipe.

MATERIAL SPECIFICATIONS

HOUSING: Cast iron ASTM A 126 CLASS A

BOLTS: Case hardened carbon steel, dichromate finish.

GASKETS: EPDM, as specified in accordance with ASTM D 2000

FIG. 7107 - Coupling (Sock-It® x Sock-It®)

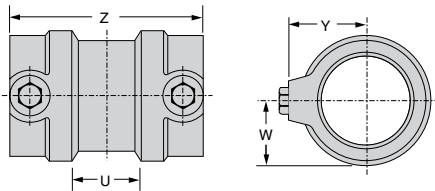


FIGURE 7107 SOCK-IT® COUPLING (S x S)								
Nominal Size	O.D.	Max. Working Pressure		Dimensions				Approx. Wt. Ea.
		UL/ULC Listed	FM Approved	U*	W	Y	Z	
In./DN(mm)	In./mm	PSI/bar	PSI/bar	In./mm	In./mm	In./mm	In./mm	Lbs./Kg
1	1.315	300	300	1/4	1 1/16	1 11/16	3 1/8	1.7
25	33.7	20.7	20.7	6	27	43	79	0.8
1 1/4	1.660	300	300	1/4	1 1/4	1 13/16	3 3/8	1.9
32	42.4	20.7	20.7	6	32	46	79	0.9
1 1/2	1.900	300	300	1/4	1 3/8	1 15/16	3 1/4	2.1
40	48.3	20.7	20.7	6	35	49	83	1.0
2	2.375	175	250	1/4	1 5/8	2 3/16	3 5/8	2.9
50	60.3	12.1	17.2	6	41	56	92	1.3

* "U" - Run take-out dimension.

PROJECT INFORMATION		APPROVAL STAMP	
Project:		<input type="checkbox"/> Approved	
Address:		<input type="checkbox"/> Approved as noted	
Contractor:		<input type="checkbox"/> Not approved	
Engineer:		Remarks:	
Submittal Date:			
Notes 1:			
Notes 2:			