

DOMESTIC

NON-DOMESTIC

SUBMITTAL: C110 FLANGE JOINT CLASS 125 PRODUCT

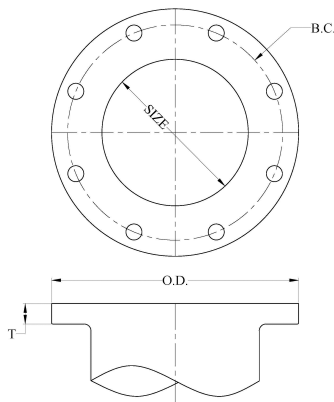
(Current revisions for the noted Standards apply)

- SIZES:** 2" - 64" (Contact Tyler Union for 54" - 64" flange fitting information)
- STANDARDS:** ANSI/AWWA C110/A21.10, NFPA 13/24, ASME B16.1, 3" - 12" UL listed and FM approved
- MATERIAL:** Cast of ASTM A536 qualified ductile iron. Date code is cast on and required for traceability.
- PRESSURE RATING:** *Flanged fittings *2" - 48" rated at 250 psi. 54" - 64" rated at 150psi.
*Note: With rubber annular ring flange gasket, 2" - 24" flanged fittings can be rated at 350 psi.
- DEFLECTION:** Deflection is "not" recommended for flange joint due to the rigidity of the joint.
- NSF-61 & NSF372:** Meets all requirements including Annex G, Tyler Union's Underwriters Laboratory listing MH16439.
- COATING:** Asphaltic or Primer per ANSI/AWWA C104/A21.4, Standard primer is Tnemec Pota Pox N140-1211. Contact Tyler Union for additional coating options.
- CEMENT LINING:** Per ANSI/AWWA C104/A21.4, with double cement lining available upon request.
- EPOXY COATING:** Fusion bonded epoxy per ANSI/AWWA C116/A21.16. Additional coatings available upon request.
- BARE FITTINGS:** Available upon request.
- FLANGES:** ANSI Class 125 per ASME B16.1 and ANSI/AWWA C111/A21.11. Bolt holes shall straddle the center line
- NOTE: Class 125 ASME B16.1 are not compatible with Class 250 Flanges**
- NOTE: Class 250 ASME B16.1 fittings are available upon request.**
- FASTNERS:** High strength low alloy weathering steel per ANSI/AWWA C111/A21.11 and ASTM A242
- INSTALLATION:** Install per AWWA C600/C651 using pipe conforming to ANSI/AWWA C151/A21.51.

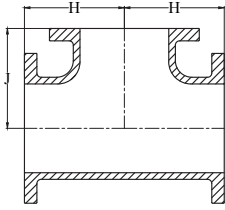
FLANGE DETAILS IN INCHES

BOLTS

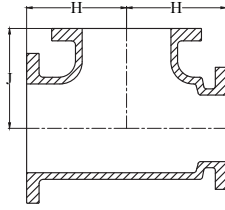
Size Inches	Diameter DI Pipe	Flange O.D.	B.C. Diameter	Flange Thickness T	Bolt Hole Diameter	Size	Qty
2	2.51	6.00	4.75	0.62	0.750	5/8 x 2-1/4	4
3	3.96	7.50	6.00	0.75	0.750	5/8 x 2-1/4	4
4	4.80	9.00	7.50	0.94	0.750	5/8 x 3	8
6	6.90	11.00	9.50	1.00	0.875	3/4 x 3-1/2	8
8	9.05	13.50	11.75	1.12	0.875	3/4 x 3-1/2	8
10	11.10	16.00	14.25	1.19	1.000	7/8 x 4	12
12	13.20	19.00	17.00	1.25	1.000	7/8 x 4	12
14	15.30	21.00	18.75	1.38	1.125	1 x 4-1/2	12
16	17.40	23.50	21.25	1.44	1.125	1 x 4-1/2	16
18	19.50	25.00	22.75	1.56	1.250	1-1/8 x 5	16
20	21.60	27.50	25.00	1.69	1.250	1-1/8 x 5	20
24	25.80	32.00	29.50	1.88	1.375	1-1/4 x 5-1/2	20
30	32.00	38.75	36.00	2.12	1.375	1-1/4 x 5-1/2	28
36	38.30	46.00	42.75	2.38	1.625	1-1/2 x 7	32
42	44.50	53.00	49.50	2.62	1.625	1-1/2 x 7-1/2	36
48	50.80	59.50	56.00	2.75	1.625	1-1/2 x 8	44
54	Available on Request						
60	Available on Request						
64	Available on Request						



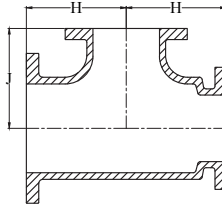
C110 DUCTILE IRON FULL BODY FITTINGS



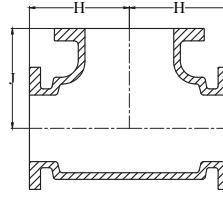
Straight Tees, Reducing on Branch Tees



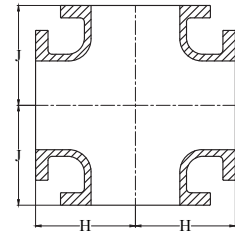
*Reducing on Run



*Reducing on Run and Branch



*Bullhead Tees



Straight and Reducing Crosses

TEES AND CROSSES									
Sizes					Domestic Weight		Import Weight		
Run	Run	Branch	H	J	Tee	Cross	Tee	Cross	
2	2	2	5.00	4.50	20	—	—	—	
3	3	2	5.50	5.50	35	—	—	—	
3	3	3	5.50	5.50	42	51	40	50	
4	4	2	6.50	5.50	53	—	—	—	
4	4	2	6.50	6.50	55	—	—	—	
4	4	3	6.50	6.50	54	76	60	70	
4	4	4	6.50	6.50	60	—	65	80	
4	4	6	8.00	8.00	88	—	—	—	
*6	4	4	8.00	8.00	85	—	—	—	
6	6	8	9.00	9.00	90	112	85	95	
6	6	4	8.00	8.00	90	141	90	110	
6	6	6	8.00	8.00	98	125	95	120	
*8	6	4	9.00	9.00	130	—	—	—	
*8	6	8	9.00	9.00	154	—	—	—	
8	8	3	9.00	9.00	128	140	—	—	
8	8	4	9.00	9.00	155	155	140	155	
8	8	6	9.00	9.00	148	172	145	165	
8	8	8	9.00	9.00	179	195	155	195	
*8	8	10	11.00	11.00	225	—	—	—	
*8	8	12	12.00	12.00	277	—	—	—	
*†10	6	6	13.00	13.00	278	—	—	—	
*†10	8	6	13.00	13.00	298	—	—	—	
*†10	8	8	13.00	13.00	278	—	—	—	
*†10	8	10	13.00	13.00	325	—	—	—	
10	10	4	11.00	11.00	239	220	205	220	
10	10	6	11.00	11.00	215	242	215	240	
10	10	8	11.00	11.00	254	294	225	265	
10	10	10	11.00	11.00	265	—	270	330	
10	10	12	12.00	12.00	337	—	—	—	
*†12	6	6	14.00	14.00	346	—	—	—	
*†12	6	8	14.00	14.00	362	—	—	—	
*†12	8	6	14.00	14.00	355	—	—	—	
*12	8	8	14.00	14.00	375	—	—	—	
*12	8	12	14.00	14.00	420	—	—	—	
*†12	10	6	14.00	14.00	390	—	—	—	
12	10	8	14.00	14.00	400	—	—	—	
12	10	10	14.00	14.00	420	—	—	—	
12	10	12	14.00	14.00	440	—	—	—	

* Not included in AWWA C110.

† H and J dimensions are two-inches longer than straight tees.