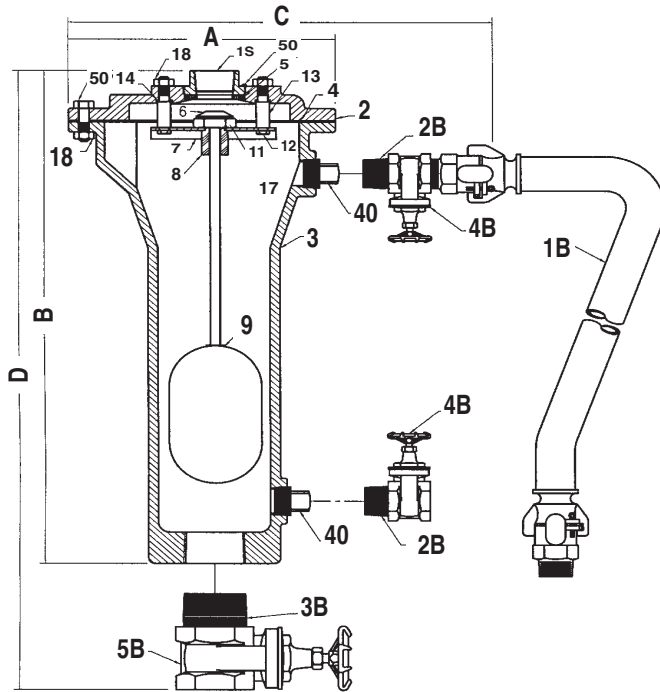


Submittal Sheet for Crispin SA Series

2" Air/Vacuum Sewer Valve (standard)

Manufactured in compliance with ANSI/AWWA C512

Date: October, 2001



Parts List

ITEM	DESCRIPTION	MATERIAL	ASTM
1S	TOP	CAST IRON	A126 CL.B
2	FLANGE	CAST IRON	A126 CL.B
3	BODY	CAST IRON	A126 CL.B
4	FLANGE GASKET	ARMSTRONG N-8092	N/A
5	SEAT	BUNA-N RUBBER	D2000
6	VALVE & FLOAT ROD	STAINLESS STEEL	A582
7	ROD GUIDE STAND	STAINLESS STEEL	A240
8	FLOAT ROD GUIDE	NYLATRON	D5989
9	FLOAT	STAINLESS STEEL	A240
11	ROD GUIDE NUT	STAINLESS STEEL	A194
12	STAND ROD SCREW	STAINLESS STEEL	A193
13	STAND ROD	STAINLESS STEEL	A582
14	STAND ROD GASKET	FIBER	D710
17	BOLT	STEEL	A307
18	NUT	STEEL	A563
*40	DRAIN PLUG	CAST IRON	A126 CL.B
50	INTERFERENCE PIN	STAINLESS STEEL	A582

OPTIONAL BACK FLUSH COMPONENTS

*1B	HOSE ASSEMBLY	CAD.PLT STEEL&RUBBER	N/A
*2B	NIPPLE	STEEL	A53
*3B	NIPPLE	STEEL	A53
*4B	GATE VALVE	BRASS	N/A
*5B	GATE VALVE	BRASS	N/A

Size Specifications

MODEL	INLET SIZE	OUTLET SIZE	A	B	C	D	WHT.
SL20A	2" NPT	1" NPT	9.75	21.50			49
SL20AB	2" NPT	1" NPT			11.75	25.75	60

Specifications

Air and Vacuum Release Valve(s) shall be installed at high points in the main line, or as directed by the engineer. This will permit the release of air as the main is filling, or relieve the vacuum as the main is draining or is under negative pressure.

The valve(s) shall be of the long body design, and shall operate by sealing the Buna-N Rubber seat with a stainless steel valve disc as the float rises when water enters the valve body. The valve(s) shall automatically open when the system drains, or is under negative pressure, so that air may enter the line.

Valve construction shall be _____" NPT screwed or ANSI Class (125, 250) flanged inlet connection, and shall be cast iron body, top and inlet flange (where required), stainless steel trim and float. The outlet connection shall be cast iron body, top and inlet float (where required), stainless steel trim and float. The outlet shall be _____" NPT screwed.

The valve(s) shall be Crispin Model _____ Air and Vacuum Sewer Valves, as manufactured by Crispin-Multiplex Manufacturing Co., Berwick, PA.

Option: The valve(s) shall be supplied with back flushing attachments so that the interior body can be flushed periodically for proper operation.

Option: A protectop shall be supplied to prevent debris from entering the outlet of the valve.

Option: Where pressures are greater than 300 PSIG, the valve(s) shall be ANSI Class _____ flanged inlet connection, and shall have a (steel, stainless steel, or ductile iron) body, top and inlet flange.

Standard operating pressure for Crispin Air Valves is 20 to 150 PSIG. Please check one of the following if your operating needs differ:
 _____ 2 to 40 PSIG _____ 151 to 300 PSIG

* Parts are interchangeable and optional at customer's request.



SUBMITTAL SHEET FOR SA SERIES