



Product Catalog

PLUMBING

(810) 503-9000 www.fernco.com



Commitment

Fernco is committed to giving the highest level of quality, Fernco quality, at the most competitive price. Our goal is to maintain standards of excellence in quality and service, while continuing to be the most innovative company in the industry.

Convenient Ordering, Fast Delivery

Fernco's phone ordering system ensures easy ordering and prompt delivery for our customers. When you call Fernco, you will be assisted by a trained professional who knows the industry and understands your individual needs. Your order will be quickly entered into our data processing system for accurate recording of specifications and costs.

Only Fernco offers you the industry's largest product line, highest fill rate and the most complete merchandising program. All of which is supported by over fifty years of design, manufacturing and distribution experience combined with an ongoing commitment to product innovation.

FLEXIBLE COUPLINGS *Page*

Standard Flexible Couplings	4-5
Proflex Specialty Couplings	6-7
1000 StrongBack RC	8
5000 StrongBack RC	9
XL Couplings	10
Flexible Chemical Couplings	11
The HULK Coupling	12-13
Puddle Flange	14
No Hub	15
Plastic Socket	15
Pipe Sleeves	15
Expansion Joints	16
Qwik Tee & Ell	16
Western Stop & Bushing	16
Corrugated	17
High Torque Corrugated	17
Ultra Rib	18
Eccentric Bushings	18
Large Diameter	18
Expanded Range LDC	18
Stainless Steel Clamps	19
Large Diameter Debris Caps	19
Qwik Caps	20

LATERAL CONNECTIONS

Tee & Wye Tap Saddles	21
Tap Saddle Pressure Kit	21
QwikSeal	22-23

INTERNAL SEALS

ICON Pushfit	24
Donuts	25
O-Rings	25
Multi-Tite Gaskets	26
Concrete Manhole Adapters	26
Large Diameter CMA's	26
Wax Free Toilet Seal	27
Wax Free Urinal Seal	27

WATER MANAGEMENT

StormDrain Plus	28
Sump Pump Check Valve	29
Water Well Debris Traps	29
Downspout Connectors	29

SEALANTS

Pow-R Patch	30
Pow-R Wrap	30
Pow-R Industrial	30

FLEXIBLE CONNECTORS

Hose Bibbs	31
Flexible Qwik Traps	31
Drain & Trap	31
Tubular Drain Pipe	32
Dishwasher Drain	32
Shower Drain	32
Fix-A-Flange	33
Utility Connectors	33
Hose Grip Washer	33

RESOURCES

Coupling Sizing Charts

- Clay to Clay	34
- Clay to Cast Iron (CI), Plastic or Steel	35-36
- Clay to Asbestos, Cement, or Ductile Iron (DI)	36-37
- Concrete to Concrete	37
- Concrete to Clay	38
- Concrete to Cast Iron, Plastic, or Steel	38-39
- AC, DI to CI, Plastic, or Steel	39-40
- AC or DI to AC or DI	40
- CI, Plastic, Steel to CI, Plastic, Steel	41-42
- Concrete to DI	43
Plumbing Market Sales Map	44-45
Waterworks Market Sales Map	46-47
Acid Resistance Chart	48
Terms & Warranty	49
Fernco Contact Information	49
Coupling Certification - QRS	50
Connection Solutions	51



A global company with a focus on the individual customer.

Established in 1964

In the 1950's, William Zopfi was looking for a reliable solution to fit his pipe connection needs for sewer lines in the Detroit, MI area. He developed a tar donut that would allow him to create more connections per day, increasing his efficiency in the field. In 1964, the Fernco Joint Sealer Company was formally established when the 'd-nut' became patented. When word spread of this invention, Zopfi, set up a small shop behind his plumbing business to begin producing the Donut. Thus, setting Fernco on it's course for the future.

When Darrell Cooper joined the team, he had a philosophy of working closely with wholesale distributors to provide products in a timely manner. This would prove to be a core value that was as important then as it is today.

In 1973, Dallas, Texas, requested a bid for the first Fernco Coupling to fit a pipe without a bell housing. Cooper saw this product as an opportunity for vast growth and established couplings in the market. Fernco then moved to its current headquarters in Davison, Michigan, allowing the company to expand and expedite its manufacturing and shipping process. In 1978, Cooper was named President of the company and purchased Fernco Joint Sealer Company, forming a new company, Fernco, Inc.



Industry Leaders

Fernco has continued to grow into different markets, while developing innovative and reliable products. Fernco has expanded throughout North and South America and acquired Flexseal Couplings LTD, the leading manufacturer of flexible couplings in the European market. The Flexseal acquisition positioned Fernco as the leading manufacturer and distributor of flexible couplings in the world.

In 2015, Fernco proudly invested in a new 150,000 sq. ft. manufacturing and distribution center in Davison, MI, along with state-of-the-art electric injection machines. Located a mile from its previous facility, the center allows Fernco to focus on additional product development and continue delivering exceptional customer service for the next fifty years.

Fernco's continuous growth is not to become the biggest company, but the best company. With resources from around the world, Fernco is able to create products that will meet the needs of the individual and the industry. It all comes down to Fernco's focus on the individual customer to provide a product that can be trusted with confidence.



Global Manufacturing



United States



Canada



United Kingdom



Germany



Australia

Global Distribution



United States



Canada



European Union



Australia



New Zealand



Puerto Rico



Mexico



Brazil

Standard Flexible Couplings



For a coupling to perform like a Fernco...

IT MUST SAY FERNCO

Manufactured of tough elastomeric polyvinyl chloride (PVC), Fernco couplings are strong, resilient and not affected by soil conditions. Due to the nature and physical properties of their material, they are also resistant to chemicals, ultra-violet rays, fungus growth and normal sewer gases. Our couplings are leak-proof, rot-proof and seal against infiltration and exfiltration.

Because of their quality and ease of installation, Fernco flexible couplings have found approval among plumbers, contractors and municipalities across the globe. Fernco couplings are used for all types of in-house and sewer applications such as drain, waste, vent piping, house-to-main, cut-ins, conductors, roof-drains and more.

All couplings are clearly marked with part number, size, and the materials that the coupling will connect to. Fernco has fast lead times with no minimum order required. For special applications, our custom design service can supply couplings for individual customer requirements. Our Flexible Couplings are the industry standard.

Fernco's specially formulated PVC compound positively seals any sewer and drain connection.



Coupling 1056-075

Available from 3/4" and larger

- Seals against infiltration and exfiltration
- Leak-proof, root-proof and resistant to many chemicals, ultra violet rays, fungus growth and normal sewer gas
- Connects pipes of same or different materials and sizes
- Corrosion-resistant and rust-proof stainless steel clamps
- Made of elastomeric polyvinyl chloride (PVC)
- 4.3 PSI maximum test pressure
- 140°F maximum intermittent operating temperature
- 120°F maximum consistent operating temperature

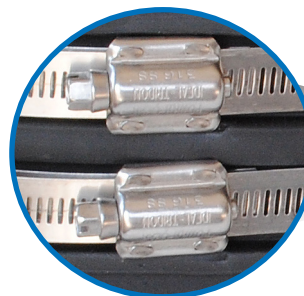
Coupling Series	Material Type	Chart Page Number
1001 & 5001	Clay to Clay	page 34
1002 & 5002	Clay to Cast Iron, Plastic or Steel	page 35-36
1003 & 5003	Clay to Asbestos, Cement or Ductile Iron	page 36-37
1004 & 5004	Concrete to Concrete	page 37
1005	Concrete to Clay	page 38
1006 & 5006	Concrete to Cast Iron, Plastic or Steel	page 38-39
1051 & 5051	AC, DI to CI, Plastic or Steel	page 39-40
1055 & 5055	AC or DI to AC or DI	page 40
1056 & 5056	CI, Plastic, Steel to CI, Plastic, Steel	page 41-42
1057 & 5057	Concrete to DI	page 43

CERTIFICATION:
Conforms to ASTM
D5926 and C1173,
CSA B602

Flexible Couplings

High Torque Clamps

Fernco makes the most complete line of couplings in the industry, from sizes 3/4" and larger. Custom large diameter couplings are available, along with shielded transitional couplings to ensure all pipes, underground and above-ground, can be connected with a Fernco coupling. Because Fernco couplings have earned a reputation for superior performance, you can have full confidence in our quality and reliability.



STANDARD on all 18" and larger couplings*



- * 5000 Series (316 Series) - 60lb. torque all sizes
- * 6000 Series (300 Series) - 60lb. torque all sizes



PROFLEX[®]

Specialty Couplings By **Fernco, Inc.** 

Above-ground transition couplings that create resilient pipe joints.

Connects 3/4" - 8" cast iron, plastic, steel, copper and tubular pipe

Technical Data

CERTIFICATION:

Proflex Shielded Couplings: Conforms to ASTM C 1460 and CSA B602

Gasket Material (Neoprene): Conforms to ASTM C 564

Shield Assembly Requirements

Clamp: 300 stainless steel

Band - 301 stainless steel .025 x .500 x length

Housing - 301 stainless steel

Screw - 305 stainless steel 5/16" hex - no slot

Shield: 301 stainless steel .012 x 2.125 x length

Eyelet: 305 stainless steel

Installation Torque: 60 in-lbs. installation torque

Maximum test pressure: 4.3 psi

Maximum operating temperature: 180° F



Shielded design to resist shear forces above-ground

3000 Series : CI to PL, ST, XHCI

Part Number	Description
3000-150	1.5" CI, PL or ST to 1.5" CI, PL, ST
3000-215	2" CI, PL, ST or XHCI to 1.5" CI, PL, ST
3000-22	2" CI, PL, ST or XHCI to 2" CI, PL, ST or XHCI
3000-33	3" CI to 3" PL, ST, XHCI
3000-43	4" CI to 3" PL, ST, XHCI
3000-44	4" CI to 4" PL, ST, XHCI
3000-55	5" CI to 5" PL, ST, XHCI
3000-66	6" CI to 6" PL, ST, XHCI
3000-88	8" CI to 8" PL, ST, XHCI

3001 Series : CI to CPR

Part Number	Description
3001-110	1.5" CI, PL or ST to 1" CPR or 3/4" PL
3001-1125	1.5" CI, PL or ST to 1.25" CPR or 1" PL
3001-150	1.5" CI, PL, ST to 1.5" CPR or 1.25" PL
3001-2125	2" CI, PL, ST to 1.25" CPR or 1" PL
3001-215	2" CI, PL, ST to 1.5" CPR or 1.25" PL
3001-22	2" CI, PL or ST to 2" CPR
3001-315	3" CI to 1.5" CPR or 1.25" PL
3001-32	3" CI to 2" CPR
3001-33	3" CI to 3" CPR
3001-43	4" CI to 3" CPR
3001-44	4" CI to 4" CPR

3002 Series : CI, PL, ST to Tubular

Part Number	Description
3002-150	1.5" CI, PL or ST to 1.5" Tubular
3002-155	1.5" Tubular to 1.5" Tubular
3002-215	2" CI, PL or ST to 1.5" Tubular

3003 Series : CPR to CPR

Part Number	Description
3003-150	1.5" CPR to 1.5" CPR or 1.25" PL
3003-215	2" CPR to 1.5" CPR or 1.25" PL
3003-22	2" CPR to 2" CPR
3003-33	3" CPR to 3" CPR

3004 Series : CI to CI, PL or ST

Part Number	Description
3004-320	3" CI to 2" CI, PL or ST
3004-420	4" CI to 2" CI, PL or ST
3004-430	4" CI to 3" CI
3004-540	5" CI to 4" CI

3005 Series : PL, ST or XHCI to PL, ST or XHCI

Part Number	Description
3005-33	3" PL, ST or XHCI to 3" PL, ST or XHCI
3005-43	4" PL, ST or XHCI to 3" PL, ST or XHCI
3005-44	4" PL, ST or XHCI to 4" PL, ST or XHCI
3005-66	6" PL, ST or XHCI to 6" PL, ST or XHCI

3006 Series : CPR to CI, PL or ST

Part Number	Description
3006-215	2" CPR to 1.5" CI, PL, or ST
3006-32	3" CPR to 2" CI, PL or ST
3006-43	4" CPR to 3" CI

3007 Series : PL, ST or XHCI to CPR

Part Number	Description
3007-32	3" PL, ST or XHCI to 2" CPR
3007-33	3" PL, ST or XHCI to 3" CPR
3007-43	4" PL, ST or XHCI to 3" CPR
3007-44	4" PL, ST or XHCI to 4" CPR

3008 Series : PL, ST or XHCI to CI, PL or ST

Part Number	Description
3008-32	3" PL, ST or XHCI to 2" CI, PL or ST

3009 Series : Thinwall PL to Sch.40 PL

Part Number	Description
3009-33	3" Thinwall PL to 3" Sch.40 PL
3009-44	4" Thinwall PL to 4" Sch.40 PL

3010 Series: CPR to Tubular

Part Number	Description
3010-150	1.5" CPR to 1.5" Tubular
3010-215	2" CPR to 1.5" Tubular

NHCI: No-Hub Cast Iron
 PL: Sch 40. Plastic
 ST: Steel (IPS)
 XHCI: Extra-Heavy Cast Iron
 CPR: Copper



Flexible Couplings

STRONG BACK



Flexible Couplings

1000 RC Series

Technical Data

Gasket

CERTIFICATION:

Conforms to ASTM D 5926, C 1173 and CSA B602

- Hardness, Shore "A", Inst. +5...65
- Tensile Strength, Min. psi....1000
- Tear Strength, Min.....150 lbf/in
- Brittleness Temperature.....-40°F

1000 RC Series Clamps

- Clamp housing - 301 stainless steel
- Clamp Band - 301 stainless steel
- Clamp screw - 305 stainless steel
- Installation torque 60 lb/in
- High torque clamps installation torque 120 lb/in where applicable

NEW 6000 RC Series

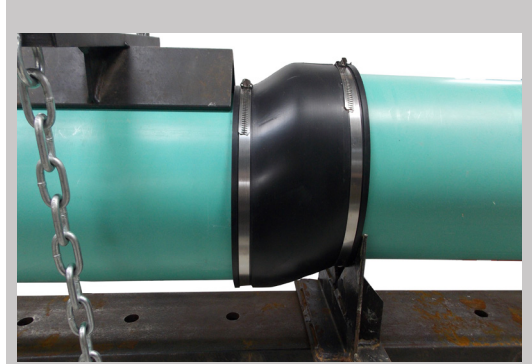
- American Iron and Steel (AIS) Compliant

Shear Ring

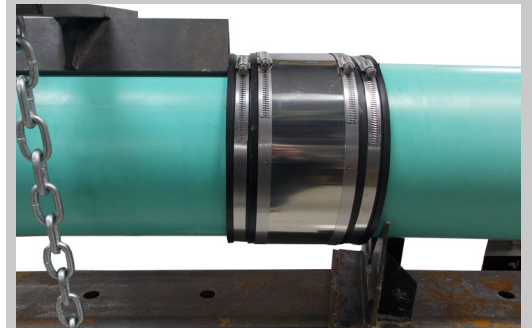
- .012" Thick, 300 Series Stainless Steel
- Width manufactured according to coupling diameter (1.5", 2.13" or 3.75")
- Length manufactured according to coupling diameter
- Clamps spot welded in place

Coupling

- 140°F maximum intermittent operating temperature
- 120°F maximum consistent operating temperature



Shear Resistance Test using an unshielded sewer coupling per ASTM C 1173 applied load 50 lbs per nominal inch of pipe diameter



Shear Resistance Test using a Fernco 1000 RC coupling per ASTM C 1173 applied load 50 lbs. per nominal inch of pipe diameter



Worm Gear Clamps

RC COUPLINGS



Nut and Bolt Clamps



5000 RC Series

Technical Data

Gasket

CERTIFICATION:

Conforms to ASTM D 5926, C 1173 and CSA B602

- Hardness, Shore "A", Inst. +5...65
- Tensile Strength, Min. psi....1000
- Tear Strength, Min.....150 lbf/in
- Brittleness Temperature.....-40°F

5000 RC Series Clamps

- Clamp Band - 316 stainless steel
- 6" and larger couplings incorporate two nut and bolt take-up points per band
- Installation torque 60 lb/in

Shear Ring

- .012" Thick, 300 Series Stainless Steel
- Width manufactured according to coupling width (1.5", 2.13" or 4")
- Length manufactured according to coupling diameter
- Clamps spot welded in place

Coupling

- 140°F maximum intermittent operating temperature
- 120°F maximum consistent operating temperature



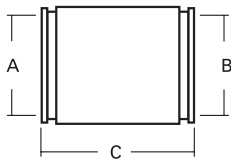
Designed to resist heavy earth loads and shear forces underground while providing improved pipe alignment.

Flexible Couplings

CUSTOM CONNECTIONS Any size, any material.

XL COUPLINGS

EXTRA Length.
EXTRA Strength.



Flexible Couplings

Technical Data

Gasket

CERTIFICATION:

Conforms to ASTM C 1173, D 5926, CSA B602

- Hardness, Shore "A", Inst. -+5..... 65
- Tensile Strength, Min. psi 1000
- Elongation at Rupture, Min. % .250
- Tear Strength, Min 150 in/lb.
- Brittleness Temperature -40°F

Clamps

- 300 Series Stainless Steel
- Installation torque60 in/lb.

Shear Ring

- .012" thick, 300 Series Stainless Steel

Coupling

CERTIFICATION:

Conforms to ASTM C 1173

Part Number	Description	A	B	C
		in.	in.	in.
*1056-1502	1 1/2" CI/PL/Steel to 1 1/2" CI/PL/Steel	1.90	1.90	6.88
*1056-1502RC	1 1/2" CI/PL/Steel to 1 1/2" CI/PL/Steel	1.90	1.90	6.88
*1056-222	2" CI/PL/Steel to 2" CI/PL/Steel	2.38	2.38	7.75
*1056-222RC	2" CI/PL/Steel to 2" CI/PL/Steel	2.38	2.38	7.75
*1056-332	3" CI/PL/Steel to 3" CI/PL/Steel	3.40	3.40	7.75
*1056-332RC	3" CI/PL/Steel to 3" CI/PL/Steel	3.40	3.40	7.75
*1056-442	4" CI/PL/Steel to 4" CI/PL/Steel	4.40	4.40	7.75
*1056-442RC	4" CI/PL/Steel to 4" CI/PL/Steel	4.40	4.40	7.75
*1056-443	4" CI/PL/Steel to 4" CI/PL/Steel	4.40	4.40	11.63
*1056-443RC	4" CI/PL/Steel to 4" CI/PL/Steel	4.40	4.40	11.63
*1056-552	5" CI/PL/Steel to 5" CI/PL/Steel	5.51	5.51	7.85
*1056-552RC	5" CI/PL/Steel to 5" CI/PL/Steel	5.51	5.51	7.85

Part Number	Description	A	B	C
		in.	in.	in.
1056-662RC	6" CI/PL to 6" CI/PL	6.63	6.63	10.00
1056-882	8" CI/PL to 8" CI/PL	8.64	8.64	10.00
1056-882RC	8" CI/PL to 8" CI/PL	8.64	8.64	10.00
1056-10102	10" CI/PL to 10" CI/PL	10.75	10.75	10.00
1056-10102RC	10" CI/PL to 10" CI/PL	10.75	10.75	10.00
1056-12122	12" CI/PL to 10" CI/PL	12.75	12.75	10.00
1056-12122RC	12" CI/PL to 10" CI/PL	12.75	12.75	10.00
1002-442RC	4" Clay to 4" PL/CI	5.40	4.50	10.00
1002-662RC	6" Clay to 6" PL/CI	7.50	6.60	10.00
1002-882RC	8" Clay to 8" PL/CI	9.65	8.65	10.25
1002-10102RC	10" Clay to 10" PL/CI	12.50	10.50	10.25
1002-12122RC	12" Clay to 12" PL/CI	14.50	12.50	10.25

*Equipped with two clamps per coupling - not including shield.

Flexible Chemical Couplings

Fernco Chemical Couplings provide a flexible and watertight connection on drainage systems that require a high chemical resistance to a wide range of chemicals. Manufactured to meet specific site requirements, Fernco Chemical Couplings withstand the widest possible range of chemicals, due to the shear band and clamping bands encasing a high-performance elastomeric sleeve with a chemically resistant one-piece Fluoropolymer (FEP) liner and PTFE seals.

- Transitions dissimilar chemical piping and sizes
- Chemical resistant drain system, connects chemical waste piping to chemical waste tanks
- One piece Fluoropolymer liner
- Suitable for above & below ground
- Max temp: 212°F consistent, 266° F intermittent
- 4.3 PSI maximum test pressure
- Custom sizes available on request



Chemical Resistance Chart Available Here

Part Number	Description	Min. Inch	Max. Inch
CC56G	1 1/2" PL/CI/GL	1.73"	2.09"
CC65G	2" PL/CI/GL or 1 1/2" DU	2.13"	2.60"
CC75G	2" DU or 2 1/2" PL	2.64"	3.11"
CC100G	3" PL/CI/GL	3.15"	3.50"
CC115G	3" DU/DI	3.54"	4.29"
CC125G	4" PL/CI/GL/DU/DI	4.33"	5.20"
CC180G	6" PL/CI/GL/DU/DI	6.22"	7.01"
CC225G	8" PL/CI/GL/DU/DI	8.35"	9.21"
CC275G	10" CI/GL	9.25"	10.59"
CC290G	10" PL/DU/DI	10.63"	12.09"
CC335G	12" PL/CI/GL	12.25"	12.75"
CC345G	12" DU/DI	12.75"	13.50"

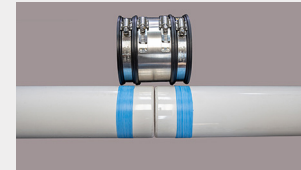
Installation Steps:



1. Chamfer and deburr both pipe ends.



2. Mark the pipes adjacent to the coupling bands.



3. Apply Ten (10) layers of PTFE tape directly over the lines on the pipe.



4. Center the FEP liner over the pipe ends and PTFE tape.



5. Use a heat gun to shrink the FEP liner to the pipe.



6. Center the coupling and tighten the bands.



7. Ensure all bands are tightened to 60 inch pound.



8. Test for leaks.

THE HULK COUPLING

Universal Connection

**Strong. Flexible.
Steel Reinforced.**



Flexible Couplings

Universal Sewer and Drain Repair Coupling Benefits

- One universal coupling connects most pipe materials
- One coupling per nominal size
- Heavy duty, multi-dimensional, non-shear sewer & drain coupling
- Protects the pipe against ground movement
- Complies with that material and performance requirements of ASTM C1173
- Corrosion resistant, high torque stainless steel clamps up to 120 in./lbs
- Embedded with Stainless Steel Rods for shear resistance

One HULK Coupling per nominal pipe size connects most common pipe materials.

Part Number	Size	Dimensional Range
HULK 4	4"	5.60" - 4.20"
HULK 5	5"	6.70" - 5.30"
HULK 6	6"	8.00" - 6.20"
HULK 8	8"	10.15" - 8.40"
HULK 10	10"	12.75" - 10.50"
HULK 12	12"	15.30 - 12.50"



Universal Couplings for Sewers & Drains

	HULK4		HULK5			HULK6			HULK8		HULK10		HULK12			
COUPLING RANGE	5.60"-4.20"		6.65"-5.30"			8.00"-6.20"			10.15"-8.40"		12.75"-10.50"		15.30"-12.50"			
CLAY	4"	5"	4"	5"	6"	4"	5"	6"	6"	8"	10"	12"	10"	12"	14"	15"
Eastern Standard Clay	5.23			6.31			6.31	7.44		9.84	11.99			14.36		
Pacific Clay	5.36		5.36					7.93		9.93			12.88	15.30		
Gladding McBean Clay	5.31		5.31					7.87			12.47			14.52		
Building Products Clay	5.20							7.75		9.80	12.40			14.40		
Can Clay Denlok						7.64			9.88				13.82			
Mission Clay	5.37		5.37	6.65			6.65	7.68		9.90	12.43			14.46		
Mission No Dig													13.50			
Logan Clay	4.92							7.52		9.70	12.08			14.36		
CAST AND DUCTILE IRON																
Ductile Iron	4.80							6.90		9.05	11.10			13.20	15.30	
Duriron	4.76				6.69			6.69		9.02	11.25			13.25		
Extra Heavy Cast Iron	4.50	5.50		5.50	6.50			6.50		8.62	10.75	12.75		12.75		
Service Weight Cast Iron	4.30	5.30		5.30	6.30			6.30		8.38	10.50	12.50		12.50		
No Hub Cast Iron	4.38	5.30		5.30	6.30			6.30		8.38	10.56	12.50		12.50		
STEEL																
Stainless Steel	4.50	5.563		5.56	6.625			6.625		8.625	10.75	12.75		12.75		
Steel	4.50	5.563		5.56	6.625			6.625		8.625	10.75	12.75		12.75	14.00	
COPPER																
Rigid Copper (TYPES K,L,M)		5.125			6.125					8.125						
PLASTIC																
SDR-35 ASTM-3034	4.22				6.28			6.28		8.40	10.50	12.50		12.50		15.30
PS-46, PS-75, PS-115 (ASTM-F679)																
Thinwall Plastic (S&D)		5.30		5.30	6.27			6.27		8.16						
Plastic Schedule 40, 80, 120	4.50	5.563		5.56	6.625			6.625		8.625	10.75	12.75		12.75	14.00	
HDPE Pipe (DIPS)	4.80							6.90		9.05	11.10			13.20	15.30	
HDPE Pipe (IPS)	4.50	5.56		5.56	6.63			6.63		8.63	10.75	12.75		12.75	14.00	
ULTRA RIB™										8.81	11.02			13.10		
ULTRA CORR™																
C900 AND C905	4.80							6.90		9.05	11.10			13.20	15.30	
CONTECH A-2000™	4.30				6.42			6.42		8.60	10.79			12.80		
Royal Kor Flo™										8.60	10.78			12.79		
ARMCO TRUSS										9.40	11.80			14.10		
ASBESTOS CEMENT (A/C)																
Asbestos Cement Sewer Class	4.81			5.90				6.92		9.02	11.12			13.20	15.30	
Asbestos Cement Sewer Class 1500, 2400, 3300, 4000, 5000 MIN/MAX Dimensions																
CONCRETE																
CONCRETE Dimensions will vary by manufacturer and class of pipe	5.50 MIN		5.50 MIN	6.50 MIN			6.50 MIN	7.75 MIN		10.00 MIN	12.45 MIN			14.50 MIN		
ORANGEBURG																
Orangeburg Bituminous Fiber (Actual sizes may be larger than stated size)	4.64			5.82				6.96		9.14						

Flexible Couplings

Puddle Flange

Ensure a Water-Tight and Pressure-Tight Seal where pipes pass through concrete walls



Flexible Couplings

The Fernco "Flexible Gasket" Puddle Flange

- Stops Water Infiltration and Exfiltration
- Stops Radon Gas
- Easy Installation and a very Cost-Effective Solution
- Good Chemical Resistance
- Suitable for All Pipe Materials
- Install in Ceilings, Floors and Walls

Notes:

- Fitted puddle flanges have an outside diameter \approx 4" larger than the pipe onto which they are installed (dependent on size)
- Concrete cover should be 2" against every surface around the puddle flange. Waterproof concrete should be used to ensure a water tight seal
- Puddle flanges do not provide axial restraint so they should not be used when axial loading on the pipe is present. The pipe has to be fully supported to withstand the concrete pouring process
- Tighten clamps to 60 in-lb torque

Fabricated Specify pipe OD when ordering

Part Number	Min. Pipe Size	Max. Pipe Size
FRK9503	11.81	15.73
FRK9504	15.74	19.67
FRK9505	19.68	23.61
FRK9506	23.62	27.54
FRK9507	27.55	31.48
FRK9508	31.49	35.42
FRK9509	35.43	39.36
FRK9510	39.37	43.29
FRK9511	43.30	47.23
FRK9512	47.24	51.00

Molded

Part Number	Min. Pipe Size	Max. Pipe Size
FRK9602	.59	.98
FRK9603	1.02	1.38
FRK9404	1.42	1.73
FRK9605	1.77	2.20
FRK9606	2.24	2.80
FRK9607	2.83	3.31
FRK9609	3.35	4.00
FRK9611	4.02	4.76
FRK9612	4.80	5.43
FRK9614	5.47	6.10
FRK9616	6.14	6.93
FRK9618	6.97	7.48
FRK9420	7.52	8.38
FRK9422	8.40	9.33
FRK9425	9.65	10.63
FRK9426	10.75	11.81
FRK9431	11.97	13.43
FRK9440	17.17	18.50

No Hub Couplings

Engineered to connect No-Hub cast iron pipe



Standard No-Hub

Part Number	Size
NH-150	1-1/2"
NH-22	2"
NH-33	3"
NH-44	4"
NH-55	5"
NH-66	6"
NH-88	8"
NH-1010	10"
NH-1212	12"
NH-1515	15"

Conforms to CISPI 301 and complies with ASTM C 1277. Gasket meets the requirements of ASTM C 564. 60 in.lbs torque, 120 in.lbs for NH-1212 and NH-1515.

Med. Duty No-Hub

Part Number	Size
MD-150	1-1/2"
MD-22	2"
MD-33	3"
MD-44	4"
MD-55	5"
MD-66	6"
MD-88	8"
MD-1010	10"

Conforms to CISPI 310, Factory Mutual CN 1680 and complies with ASTM C564, ASTM C1540, IAPMO file #3198. Gasket meets the requirements of ASTM C564. 80 in.lbs torque. Yellow color.

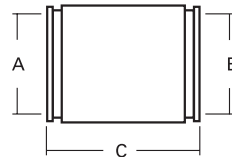
Heavy Duty No-Hub

Part Number	Size
HD-150	1-1/2"
HD-22	2"
HD-33	3"
HD-44	4"
HD-55	5"
HD-66	6"
HD-88	8"
HD-1010	10"

Conforms to CISPI 310, Factory Mutual EN 1680 and complies with ASTM C564, ASTM C1540, IAPMO file #3198. Gasket meets the requirements of ASTM C564. 80 in.lbs torque. Easily identified with green color.

Plastic Socket

Socket-to-socket and socket-to-pipe connections



Technical Data

- Compatible with plastic traps
- Shorten length to 3" or 2"
- Maximum pressure: 4.3 PSI

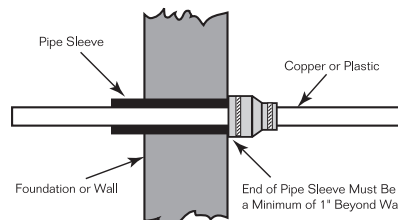
	A	B	C
Part Number	in.	in.	in.
1059-150	2.26	1.97	3.90
*1059-2/150	2.69	1.90	3.91
1059-22	2.70	2.40	3.91
*1059-32	3.99	2.38	3.99
1059-33	3.99	3.49	3.99
*1059-42	5.01	2.38	3.99
*1059-43	5.01	3.38	3.99
1059-44	5.01	4.50	3.99



	A	B	C
Part Number	in.	in.	in.
1060-150	2.26	2.26	3.92
1060-22	2.70	2.70	3.95
1060-33	3.94	3.94	3.97
1060-44	5.01	5.01	3.97

Pipe Sleeves

Seal pipe sleeves and carrier pipes



Technical Data

- Above and below ground applications
- Maximum test pressure: 4.3 PSI

Part Number	Pipe Sleeve	Carrier Pipe
DTC-110	1-1/2"	3/4", 1" plastic or 1" copper
DTC-210	2"	3/4", 1" plastic or 1" copper
1056-315	3"	1-1/2"
1056-32	3"	2"
1056-415	4"	1-1/2"
1056-42	4"	2"
1056-43	4"	3"

CERTIFICATION: Conforms to ASTM D5926, C1173 and CSA B602

Expansion Joints

Thermal expansion and contraction of vertical pipes

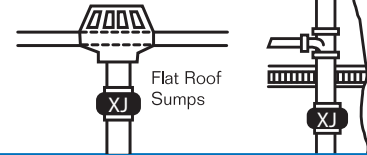


Technical Data

- Alternative for DWV offsets
- Residential and commercial applications
- Unique one-piece construction
- Positive positioning internal stops
- Applicable for drain, waste and vent stacks, and interior rain water conductor systems
- Accommodates a maximum of 1½" pipe expansion and ½" contraction from a normal position
- **Above-ground use only**

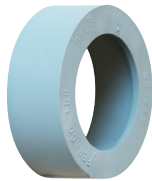


Stack installations for multi-story buildings



Part Number	Nominal Pipe Size
XJ-150	1-1/2"
XJ-2	2"
XJ-3	3"
XJ-4	4"

Qwik Tee's & Ell's



Qwik Bushing - Reducer

A

B

Extra length for 90° and tee connections



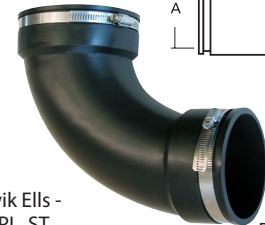
Qwik Tees - CI, PL, ST

A

B

C

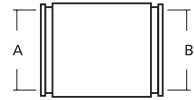
Above-ground use only



Qwik Ells - CI, PL, ST

A

B



Part Number	inch	inch
QB-150/125	1.90	1.65
QB-215	2.40	1.90
QB-32	3.50	2.40
QB-43	4.50	3.50

Part Number	inch	inch	inch
QT-150	1.90	1.90	1.90
QT-200	2.40	2.40	2.40
QT-300	3.50	3.50	3.50
QT-400	4.50	4.50	4.50

Part Number	inch	inch
QL-150	1.90	1.90
QL-200	2.40	2.40
QL-300	3.50	3.50
QL-400	4.50	4.50


CERTIFICATION: Conforms to ASTM D5926

Western Series Center Stop

Couplings

Bushings

(Bushings Continued)

Technical Data	Couplings		Bushings		(Bushings Continued)	
	Part Number	Size	Part Number	Size		
<ul style="list-style-type: none"> • Bushings available for common 4", 6" and 8" transitions - Sch. 40 PVC, ABS plastic and SDR-35 Plastic - Bead, bald and plain-end cast iron - Rough barrel and machined-end AC - Ductile iron 	1081-44	5.44" x 5.44" Clay to Clay	481-2.38	5.38" x 2.38" Clay x PECl	481-4.90	5.38" x 4.90" Clay x RBAC or CI 150 DI (B)
	1081-66	8.00" x 8.00" Clay to Clay	481-3.38	5.38" x 3.38" Clay x PECl	681-6.38	7.98" x 6.37" Clay x PECl or PVC (J)
	1081-88	10.00" x 10.00" Clay to Clay	481-3.50	5.38" x 3.50" Clay x Bead CI, PL, XHCl	681-6.63	7.98" x 6.62" Clay x ABS, Bead CI, MEAC (C)
	1085-88	9.00" x 9.00" AC x AC	481-4.25	5.38" x 4.25" Clay x SDR-35 or PVC	881-8.38	10.18" x 8.42" Clay x PECl or PVC (J)
	1086-33	3.40" x 3.40" CI or PL to CI or PL	481-4.38	5.38" x 4.39" Clay x PECl or Bald CI (J)	881-8.63	10.18" x 9.00" Clay x ABS, Bead CI, MEAC
	1086-44	4.56" x 4.56" CI or PL to CI or PL	481-4.50	5.38" x 4.50" Clay x ABS or Sch. 40	881-9.00	10.18" x 9.00" Clay x RBAC or CI 150 DI (B)
			481-4.63	5.38" x 4.63" Clay x Bead CI or MEAC (C)	885-8.38	9.00" x 8.42" AC x PECl or PVC
					885-8.63	9.00" x 8.64" Clay x ABS, Bead CI, MEAC

Corrugated Pipe Couplings

Technical Data

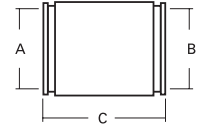
- Available in 3", 4", 6" and 8" sizes
- Connects corrugated polyethylene drainage and irrigation systems to sewer, drain or DWV plastic pipe



CERTIFICATION: Conforms to ASTM D5926

* Insert Bushing included

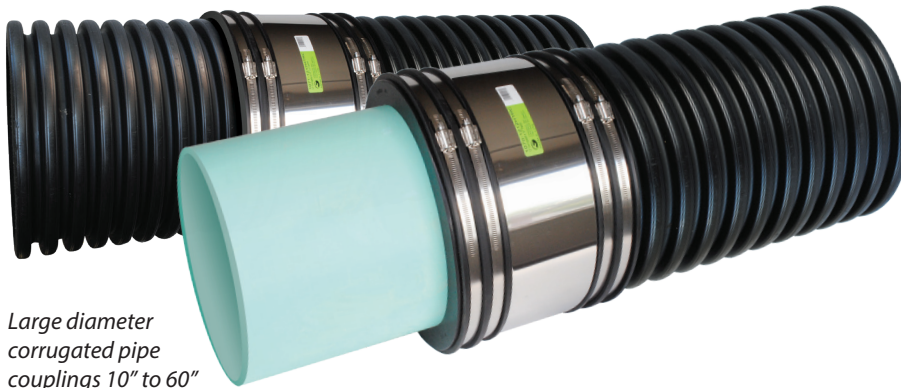
Connect ADS and Hancor corrugated polyethylene to plastic



Part Number	A in.	B in.	C in.
*1070-32	3.57	2.38	3.96
1070-33	3.57	3.44	3.96
*1070-42	4.76	2.38	3.94
*1070-43	4.76	3.38	3.94
1070-44	4.76	4.29	3.94
*1070-63	6.83	3.38	5.91
*1070-64	6.83	4.38	5.91
*1070-65	6.83	5.50	5.91
1070-66	6.83	6.50	5.91
*1070-84	9.76	4.38	5.70
*1070-86	9.76	6.38	5.70
1070-88	9.76	8.42	5.70

HTRC Corrugated Pipe Couplings

Technical Data



Large diameter corrugated pipe couplings 10" to 60"

- **Shear Resistance:** .012" (12mil) 300 series stainless steel shear ring
- **High Torque Clamps:** 301 series stainless steel high torque clamps
 - 10" couplings are 6" wide with two clamp areas
 - 12" and larger couplings are 10" wide with 4 clamp areas.
- **Sealing Gasket:** The flexible PVC gasket has a smooth inside surface to provide ultimate sealing performance, making 360° contact over its entire length.

Flexible Couplings

Greater sealing force on corrugated pipe

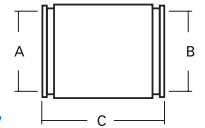
Corrugated Polyethylene to Plastic

Corrugated Polyethylene to Corrugated Polyethylene

Part Number	A in.	B in.	C in.	Part Number	A in.	B in.	C in.
*1070-10-8HTRC	11.6	8.4	6.0	1071-1010HTRC	11.6	11.6	6.0
*1070-1010HTRC	11.6	10.5	6.0	1071-1212HTRC	14.4	14.4	10.0
*1070-1210HTRC	14.4	10.5	10.0	1071-1515HTRC	17.7	17.7	10.0
*1070-1212HTRC	14.4	12.5	10.0	1071-1818HTRC	21.3	21.3	10.0
*1070-1515HTRC	17.7	15.3	10.0	1071-2424HTRC	28.1	28.1	10.0
*1070-1818HTRC	21.3	18.7	10.0	1071-3030HTRC	35.4	35.4	10.0
*1070-2424HTRC	28.1	24.8	10.0	1071-3636HTRC	41.6	41.6	10.0
*1070-3030HTRC	35.4	31.5	10.0	1071-4242HTRC	47.7	47.7	10.0
*1070-3636HTRC	41.6	39.4	10.0	1071-4848HTRC	54.1	54.1	10.0
*1070-4242HTRC	47.7	44.5	10.0	1071-5454HTRC	61.0	61.0	10.0
*1070-4848HTRC	54.1	50.8	10.0	1071-6060HTRC	66.8	66.8	10.0

* Insert Bushing included

Additional sizes available upon request.



Ultra-Rib Sewer Pipe Couplings

Efficiently connect ETI to Abestos Cement or ETI to SDR-35

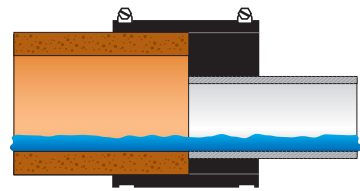


ETI to SDR-35 Plastic				ETI to Asbestos Cement or Ductile Iron			
Part Number	A in.	B in.	C in.	Part Number	A in.	B in.	C in.
1072-1212	14.00	14.00	10.00	*1073-1212	14.00	12.25	10.00
1072-1515	16.80	16.80	10.00	*1073-1515	16.80	15.30	10.00
1072-1818	20.30	20.30	10.00	*1073-1818	20.30	18.75	10.00
1072-2121	23.75	23.75	10.00	*1073-2121	23.75	21.60	10.00
1072-2424	26.75	26.75	10.00	*1073-2424	26.00	24.80	10.00

CERTIFICATION: Conforms to ASTM D5926

Eccentric Bushings & Couplings

Maintain a continuous flow-line in critical grade conditions



CERTIFICATION: Conforms to ASTM D5926 and C1173

Technical Data

- Available for all common sewer pipe
- 300 series stainless steel clamps
- Maximum test pressure 4.3 PSI
- Improves internal pipe alignment
- Improves water flow

Flexible Couplings

Large Diameter

For non-standard or special size applications

Technical Data

- 10 inches wide
- 316 stainless steel high torque clamps with multiple take up points
- Up to 120-lbs of torque for greater sealing pressure

* Where O.D. differences range from 1-1/4" - 12", a Fernco bushing system is available

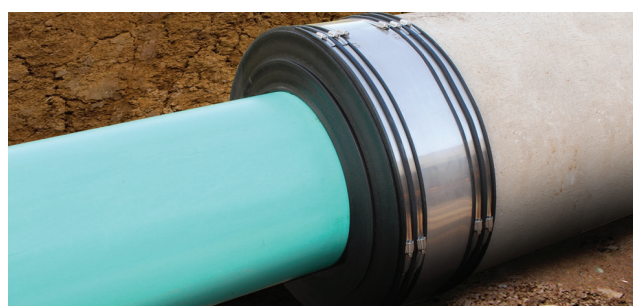


The ideal coupling for repairs, alterations or rehabilitation of large diameter sewer pipe.

Expanded Range LDC

- Connect pipe materials with O.D.'s up to 12" difference
- Reduces customer cost by utilizing one coupling and bushing configuration
- Reduces multiple couplings and intermediate pipe

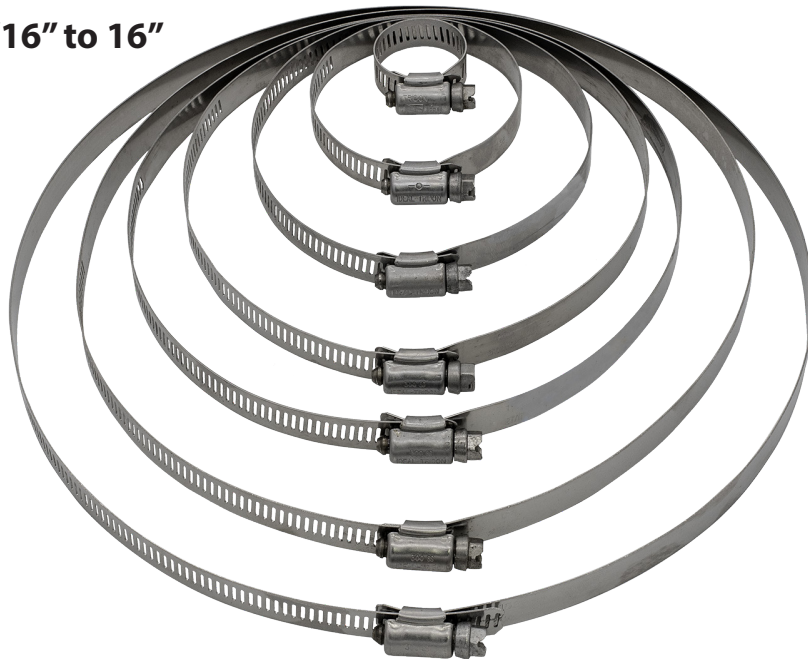
*Where O.D. differences range from 1-1/4" - 12", a Fernco bushing system is available



CUSTOM CONNECTIONS Any size, any material.

Stainless Steel Clamps

9/16" to 16"



Series 316 stainless and high torque clamps are available upon request

Interlocked housing and band design strengthens under tension to ensure a positive seal. Bands have additional slots to accommodate greater dimensional range.

Part Number	For Diameters
012-300	9/16" to 1-1/4"
020-300	3/4" to 1-3/4"
024-300	1-1/16" to 2"
028-300	1-5/16" to 2-1/4"
032-300	1-9/16" to 2-1/2"
038-300	1-15/16" to 2-7/8"
042-300	2-3/16" to 3-1/8"
044-300	2-5/16" to 3-1/4"
064-300	2-5/8" to 4-1/2"
080-300	3-5/8" to 5-1/2"
088-300	4-3/32" to 6"
096-300	4-1/2" to 6-1/2"

Part Number	For Diameters
104-300	5" to 7"
116-300	5-3/4" to 7-3/4"
128-300	6-1/2" to 8-1/2"
140-300	7" to 9-1/4"
152-300	8" to 10"
164-300	8-3/4" to 10-3/4"
184-300	10" to 12"
196-300	10-3/4" to 12-3/4"
212-300	11-3/4" to 13-3/4"
248-300	14" to 16"

Flexible Couplings

Custom Large Diameter Debris Caps

Custom fabricated for 6.50" and larger pipe OD.



Technical Data

- Reusable or permanent debris caps for pipe ends
- Designed for direct burial on non-pressurized horizontal pipe lines
- Soil tight seal
- Strong two-piece construction
 - CAP Face: Rigid durable FPVC
 - Cap Body: Flexible PVC
 - Clamps: 300 series stainless steel

NOTE: Not intended for use as a load bearing surface on vertically orientated pipe. Do not stand or step on cap surface if installed on vertically orientated pipe.

Qwik Caps

Quick, reusable caps for pipe ends, testing & cleanouts



Flexible Couplings

Qwik Caps offer a quick, easy way to cap pipe ends, cleanouts and test pipes. Made of flexible PVC, they are suitable for above-ground or underground applications for most pipe materials.

Technical Data

- Underground or above-ground applications
- 300 stainless steel clamps
- Max. operating temperature: 140°F intermittent
- Permanent seal

CERTIFICATION: Conforms to ASTM D5926

Nominal Qwik Caps

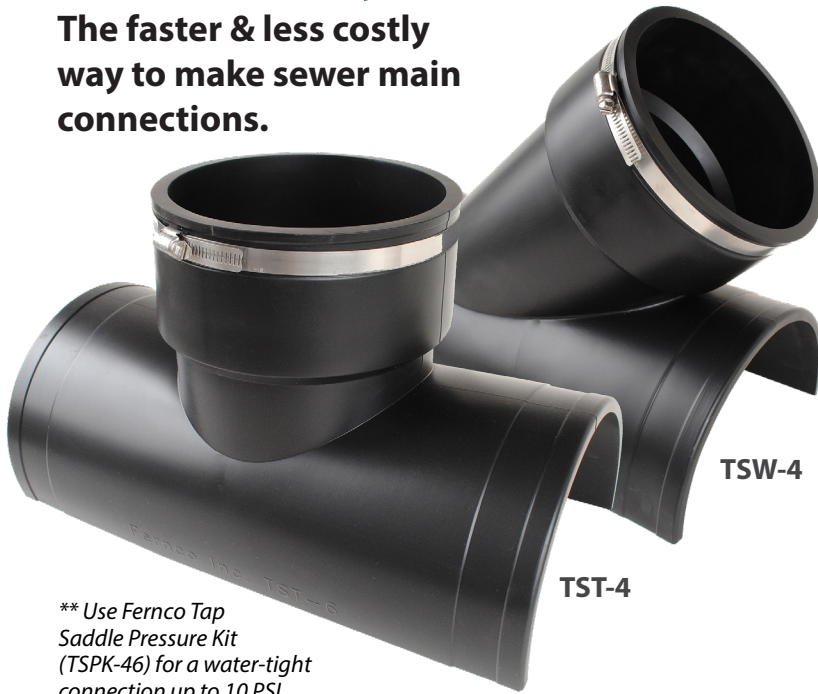
Part Number	I.D.	Min.	Max.
QC-101	1.90	1.75	2.00
QC-102	2.40	2.25	2.60
QC-103	3.50	3.25	3.70
QC-104	4.50	4.25	4.70
QC-105	5.60	5.35	5.80
QC-106	6.60	6.35	6.80
QC-108	8.50	8.25	8.70
QC-110 (TC-10)	10.47	9.88	11.00
QC-112	12.49	11.41	13.33

Specialty Qwik Caps

Part Number	I.D.	Min.	Max.
QC-0.85	0.85	0.79	0.91
QC-1.07	1.07	1.00	1.12
QC-1.38	1.37	1.22	1.50
QC-1.68	1.68	1.37	1.87
QC-2.75	2.75	2.18	2.93
QC-3.75	3.76	3.29	4.00
QC-4.75	4.82	4.32	5.05
QC-7.00	6.96	6.44	7.25
QC-9.00	9.01	8.59	9.34
QC-9.75	9.75	9.29	10.00
QC-10.75	10.74	10.22	11.15
QC-14.00	14.00	13.23	14.30

Tee & Wye Tap Saddles

The faster & less costly way to make sewer main connections.



** Use Fernco Tap Saddle Pressure Kit (TSPK-46) for a water-tight connection up to 10 PSI.

CERTIFICATION: Conforms to ASTM D5926

Technical Data

- Includes special 300 series stainless steel 'slip-lock' clamps for easy installation on any type of pipe from 6"-15"*
- Larger apron w/ locating ring fits 5" or 7" shell cutters
- Large band grooves
- Ensures a soil-tight seal **
- Available for most 4" or 6" plastic or cast iron drain pipe inlets in Tee or Wye configurations

Part Number	Description
TST-4	4" CI or PL Inlet - Tee Tap Saddle
TST-6	6" CI or PL Inlet - Tee Tap Saddle
TSW-4	4" CI or PL Inlet - Wye Tap Saddle
TSW-6	6" CI or PL Inlet - Wye Tap Saddle
* 312-300	Extension Clamps larger than 15" sewer mains

Tap Saddle Pressure Kit



Technical Data

- Bentonite tape provides a water tight seal
- Pressure tested to 10 PSI
- Stainless steel reinforcing bars apply an even sealing pressure
- Includes two special 300 series stainless steel 'slip-lock' clamps for a fast and simple installation



Part Number	Description
TSPK-46	Pressure kit for Fernco Flexible Tap Saddles - Fits models: TST-4, TST-6, TSW-4, TSW-6



Connect Service Pipe to solid wall, profile, closed profile and corrugated pipe.

Technical Data

- When tested in concrete manholes
 - Creates water-tight, compression seal up to 10 PSI
 - Withstands up to 7° of deflection
- Easy color identification - gray Sch 40 - green SDR-26 & 35
- Independent of host pipe size, type or material
- Reduced complexity



CERTIFICATION:
Conforms to ASTM C923

Lateral Connections

Part Number	Pipe Inlet	Host Pipe Size Application
QS-4	4" SDR-26 & 35	8" diameter or larger, concrete, clay or solidwall plastic pipe or 8" - 24" corrugated plastic pipe
QS-4S40	4" SCH-40	8" diameter or larger, concrete, clay or solidwall plastic pipe or 8" - 24" corrugated plastic pipe
QS-6	6" SDR-26 & 35	10" diameter or larger, concrete, clay or solidwall plastic pipe or 10" - 24" corrugated plastic pipe
QS-6S40	6" SCH-40	10" diameter or larger, concrete, clay or solidwall plastic pipe or 10" - 24" corrugated plastic pipe
QS-8	8" SDR-26 & 35	15" diameter or larger, concrete, clay or solidwall plastic pipe or 15" - 24" corrugated plastic pipe

NOTE: Not recommended for connection to metal pipe.



Hole Saws For Plastic Pipe

A perfect tool for working through a thick-wall pipe like ribbed PVC or Large Diameter corrugated HDPE.

Part Number	Description
QS-5x4HS	5" OD x 4" Deep Hole Saw with Arbor
QS-7x4HS	7" OD x 4" Deep Hole Saw with Arbor
QS-9x4HS	9" OD x 4" Deep Hole Saw with Arbor

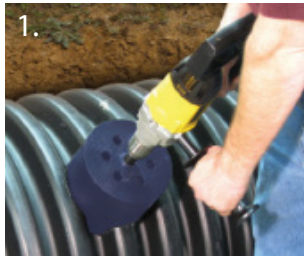


Coring Bits For Concrete or Clay Pipe

Equipped with straight diamond segments designed for drilling through medium to hard concrete with medium to high reinforcement.

Part Number	Description
QS-5x14CB	5" OD x 14" Length Abrasive Coring Bit
QS-7x14CB	7" OD x 14" Length Abrasive Coring Bit
QS-9x14CB	9" OD x 14" Length Abrasive Coring Bit

QwikSeal Installation



1. Core a perpendicular hole to the main line:
 - 5" hole for 4" pipe inlet
 - 7" hole for 6" pipe inlet
 - 9" hole for 8" pipe inlet



2. Use sand paper or a file, clean and remove any burrs from opening.



3. Remove band clamp from QwikSeal, fold and insert into opening. Unfold.



4. Pull up on QwikSeal until it stops against the inside of the pipe.



5. Measure the depth of the QwikSeal, from the pipe stop to the top edge.



6. Measure the depth of the fitting to be attached pipe stub. See *alternative method below*.



7. Add the dimensions of the QwikSeal and the fitting and cut a stub to that length.



8. Bevel the leading edge of the pipe stub for easier insertion into the QwikSeal.



9. Lubricate the QwikSeal and pipe stub.



10. Start the pipe stub into the QwikSeal by hand.



11. Using a hammer and block of wood, drive the pipe stub to the QwikSeal pipe stop.



12. Install the band clamp at 60 in-lbs. torque.



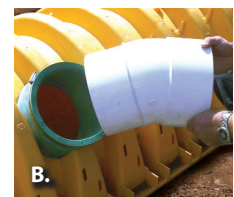
13. Install pipe fitting. Fitting should sit flush with the surface of the QwikSeal.



14. Fitting and QwikSeal should be flush

Alternative Methods to Stub and Fitting

Bell End Pipe: You may also use the bell end of a piece of SDR-35 or SCH 40 instead of the stub and fitting method. After measuring the depth of the QwikSeal in step 5, transfer this measurement to the bell end of your inlet pipe, measuring from the bell. (Figure A) Proceed with steps 8 - 12. **Street Fittings:** Street fittings may also be used with QwikSeal. (Figure B)



ICON Pushfit

Internal Pushfit Connector - 4" & 6" Sewer Pipe and DWV



Internal Seals



1) Clean and measure pipe I.D.



2) Lubricate gasket O.D. with soap & water solution



3) Push in place up to the pipe stop

Ensure that the tapered edge on the rubber sleeve does not fold back when inserting into the pipe.



4) Lubricate gasket and install 2nd pipe

Benefits & Characteristics

- No tools required
- Can be removed and re-used
- Watertight connection on any pipe material
- Connects pipes of differing or irregular O.D.
- Rigid ABS Body provides excellent shear resistance
- Ideal for the connection of plastic (SDR 35, Sch 40), Cast Iron and Copper. Does not work for SDR-26.



Product Code	Nominal Dia. (inch)	Description
IC44P	4	Connects two pipes having an I.D. range of: 3.90"-4.06"
IC66P	6	Connects two pipes having an I.D. range of: 5.83"-6.02"

Fernco Donuts

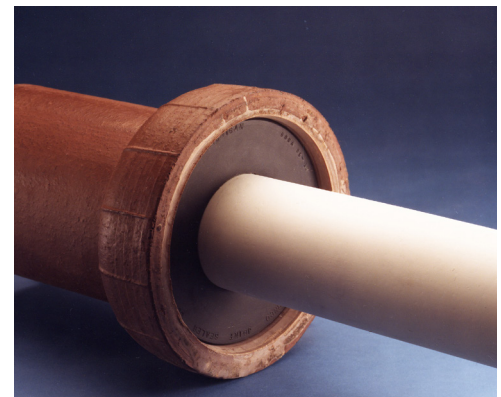
Sewer pipe compression joint seal



Fernco Donuts are flexible PVC donut-shaped rings for the compression sealing of sewer pipe joints and DWV connections such as sockets, hubs, bells and spigots.

Fernco Donuts are available in hundreds of sizes and configurations to use with most brands and types of piping material.

Give us a call. Our sales associates are trained to assist you in making the right part selection.



Internal Seals

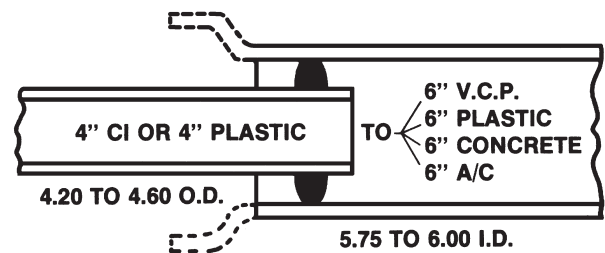
Fernco O-Rings

Connects 4" house pipe to 6" sewer pipe



O-rings provide a quick, simple solution to create secure connections between most 4" house pipe and 6" sewer pipe.

CERTIFICATION: Conforms to ASTM C443 and C425



Technical Data

- Installs quickly and easily
- Connects CI or plastic house pipe to clay, plastic, concrete or A/C sewer pipe

Part Number	Description
BR-64	Rolling style rubber O-Ring

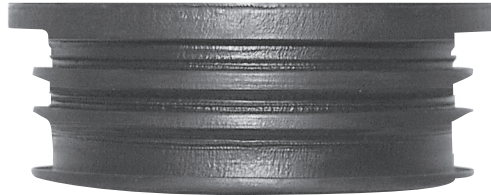
Multi-Tite Pipe Gaskets

Pipe gasket for service weight cast iron pipe

Technical Data

- Multi rings on the outside create an easy installation
- Seals sewer pipe joints and connections such as sockets, hubs, bells and spigots

CERTIFICATION:
Conforms to ASTM C564



Part Number	Description
SVG-2	2" service weight cast iron
SVG-3	3" service weight cast iron
SVG-4	4" service weight cast iron
SVG-5	5" service weight cast iron
SVG-6	6" service weight cast iron
SVG-8	8" service weight cast iron
SVG-10	10" service weight cast iron
SVG-12	12" service weight cast iron
SVG-15	15" service weight cast iron

Concrete Manhole Adapters

Eliminate leaks around pipes entering manhole walls

CMA's are flexible enough to permit lateral pipe movement without destroying seal integrity. It is particularly useful for pipe to which concrete will not adhere, such as plastic pipe.



** Due to the factors that can influence the CMA's effectiveness as a seal, Fernco does not warrant this product as a positive seal.*

Part Number	Description
4CMA	4" I.D. Pipe
6CMA	6" I.D. Pipe
8CMA	8" I.D. Pipe
10CMA	10" I.D. Pipe
12CMA	12" I.D. Pipe

Large Diameter CMA's

For sewer pipes that are 8" and larger

LDCMA's are flexible enough to permit lateral pipe movement without destroying seal integrity. It is particularly useful for pipe to which concrete will not adhere, such as plastic pipe.



Order by specifying the pipe O.D. of the pipe which is to receive the waterstop. Minimum size: 8.5 inches O.D.

** Due to the factors that can influence the CMA's effectiveness as a seal, Fernco does not warrant this product as a positive seal.*

Wax Free Toilet Seal

Residential and commercial applications in three ideal sizes



Technical Data

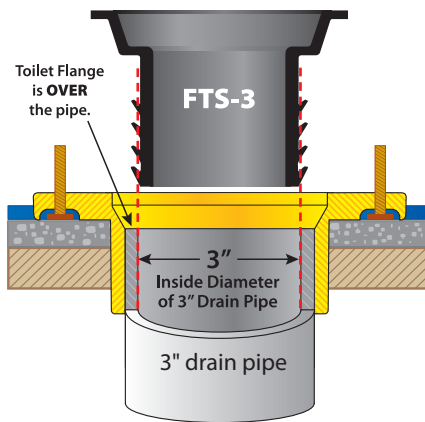
- Strong and flexible to sustain a seal
- Accommodates floors above the toilet flange to 3/4"
- Impervious to mold and mildew
- Centers itself and the toilet to drain
- Ideal for in-floor radiant heat systems

CERTIFICATION: Conforms to ASTM A1045

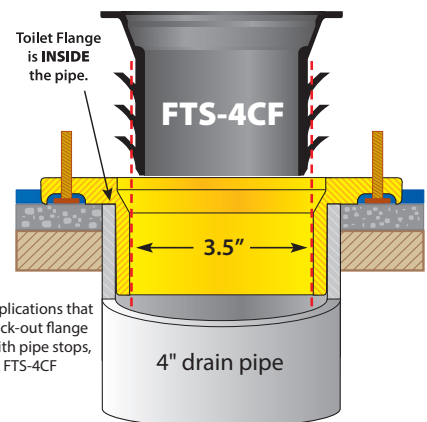
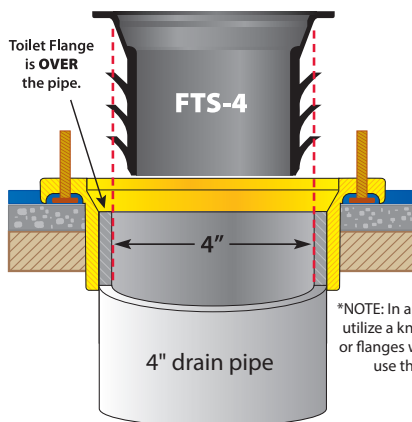


Part Number	Description
FTS-3	Wax Free Toilet Seal for 3" Drain Pipe
FTS-4	Wax Free Toilet Seal for 4" Drain Pipe
FTS-4CF	Wax Free Toilet Seal for 3.5" Flange and 4" Drain Pipe

The FTS-3 Wax Free Toilet Seal



The FTS-4 Wax Free Toilet Seal

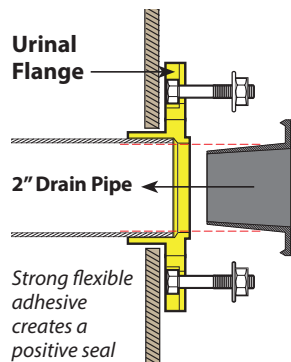


*NOTE: In applications that utilize a knock-out flange or flanges with pipe stops, use the FTS-4CF

Internal Seals

Wax Free Urinal Seal

Fast, reliable & leak-free



Technical Data

- Strong and flexible to sustain a positive seal
- Ideal for new installations and replacements
- Maintains a gas, water and odor tight seal
- Fast, easy installation for a long-term seal
- Impervious to mold and mildew
- Reusable on the same urinal



CERTIFICATION: Conforms to ASTM A1045

Part Number	Description
FUS-2	Wax Free Urinal Seal for 2" Drain Pipe



Ideal for driveways, patios, swimming pools, sports courts, gardens and more!

StormDrain Plus ensures a long-lasting, permanent solution to the collection and dispersal of standing surface water.



Water Management



FSDP-CHGG

FSDP-QUAD

FSDP-EC

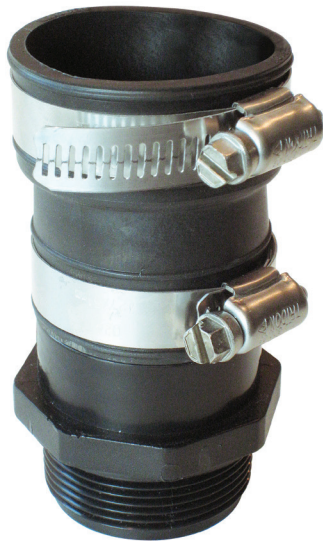
FSDP-EO

Technical Data

- Designed to withstand automotive weight for Class B (loads of 61-175 psi), medium-duty pneumatic tire traffic, autos and light trucks at speeds less than 20 mph.
- All products are "UV" inhibited
- Grates are ADA and heel guard compliant
- Grates have a non-slip textured surface
- Clips or screws are not required to assemble
- Concave grates trap and transfer water

Part Number	Description
FSDP-CHGG	39.5" grey Channel with grate
FSDP-GP3G	Three pieces of grey Channel with grate, one End Cap and one End Outlet
FSDP-QUAD	Four-way connector
FSDP-EC	End Cap
FSDP-EO	End Outlet

Replacement Part Number	Description
FSDP-CH	Grey Channel ONLY
FSDP-GG	Grey grate ONLY



Sump Pump Check Valve

Reduces sump pump wear and tear

Sump Pump Check Valves allow unrestricted water to flow through the pipes.

Technical Data

- Full-flow, flapper design
- Eliminates back-flow and wear on pump
- Durable thermoplastic body

Part Number	Description
CV-125T	1-1/4" male pipe thread x 1-1/2" or 1-1/4"
CV-150T	1-1/2" male pipe thread x 1-1/2" or 1-1/4"
CV-150	1-1/4" or 1-1/2" x 1-1/4" or 1-1/2"
CV-200	2" x 2"

Water Well Debris Traps

Prevents loose debris from plugging pump suction area



Technical Data

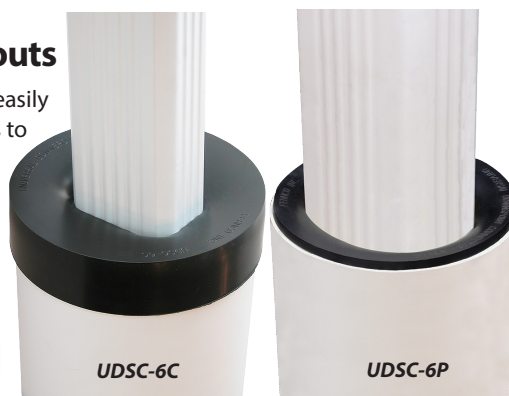
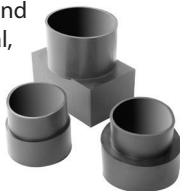
- Eliminates debris in the water well pump suction area
- Will not crack or become brittle
- Made of flexible PVC
- Conforms to drilled well irregularities

Part Number	Description
WC500-238	2" casing x 5" well
WC600-350	3" casing x 6" well
WC600-450	4" casing x 6" well
WC700-450	4" casing x 7" well
WC700-562	5" casing x 7" well
WC800-550	5" casing x 8" well
WC900-550	5" casing x 9" well
WC800-662	6" casing x 8" well
WC1000-662	6" casing x 10" well

Downspout Connectors

Seal out debris by connecting downspouts

Downspout Connectors stretch easily over most common downspouts to seal out debris. Ideal for aluminum, steel or plastic downspouts and cast iron, spiral, corrugated or plastic drain pipe.



Part Number	Drain Pipe	Downspout
DSC-43	4"	3" x 2" rectangular, 3" round
DSC-33	3"	2-1/2" square
DSC-534	4"	5" x 3" rectangular

Part Number	Description
UDSC-6C	6" Cap for DWV pipe exposed above ground, fitting the O.D. of PVC and CI and a 6" or less downspout
UDSC-6P	6" Plug for DWV pipe cut off at grade level, fitting any 6" I.D. sewer pipe and a 5.75" or less downspout



15-Minute Repair Kit.
Easy to apply.
No tools needed!



Pow-R Patch is a complete repair kit that includes a pre-coated fiberglass cloth in a self-contained mixing pouch, and a pair of protective gloves.

Technical Data

- Holds up to 100 PSI
- Heat resistant to 425°F

Part Number Description

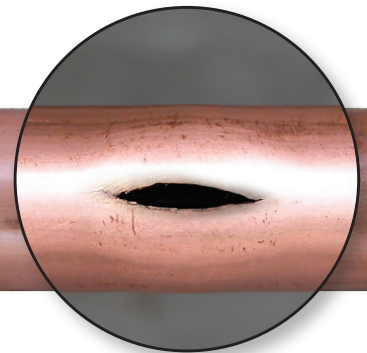
FP-P46	4" x 6" fiberglass and epoxy patch
--------	------------------------------------



Pow-R Wrap is a water activated fiberglass wrap that permanently repairs wet or dry pipe and hose. Pow-R Wrap is a self-contained kit including everything you need to repair a magnitude of applications.

Technical Data

- Water activated
- Fiberglass wrap
- Heat resistant to 425°F
- Conforms to standard water main pressure test
- Cures in 30-60 minutes



Part Number	Description	Pipe Diameter
FPW248CS	2" x 48" wrap	Up to 1"
FPW3132CS	3" x 132" wrap	1-1/4" to 3"
FPW4252CS	4" x 252"	3" to 6"

Sealants



Pow-R Wrap Industrial with Pow-R Belt is a permanent solution for large diameter pipes from 8"-50".

Technical Data

- Heat resistant to 425°F
- Conforms to standard water main pressure test
- Cures in 60-90 minutes at 55°-75°F
- Safe for drinking water systems
- Repairs up to 1/4" W x 4" L
- Impervious to water, oil, and most chemicals, solvents and acids when cured

FPW8540S-1		1 KIT 8" X 540" Pow-R Wrap				
Pipe Outside Diameter	8"-18"	20"-24"	26"-34"	36"-42"	44"-50"	
Number of Kits REQUIRED	1 KITS	2 KITS	3 KITS	4 KITS	5 KITS	

Hose Bibbs

Reusable cap with hose bib for pipe ends and testing DWV systems



Technical Data

- Permanent or temporary cap
- Convex shape allows the cap to withstand pressure and minimizes ballooning

Part Number	Nominal Pipe Size
HBC-1	1-1/2"
HBC-2	2"
HBC-3	3"
HBC-4	4"
HBC-5	5"
HBC-6	6"

Flexible Qwik Traps

Replace plastic or metal drain traps

- * 200 Series Stainless Steel
- * Hand tighten only



Qwik Traps replace 1-1/4" or 1-1/2" plastic or metal drain traps. The PVC material adjusts to the pipes misalignment and installs securely, creating a leak-free connection. To clean, simply squeeze the product!

1-1/4" or cut for 1-1/2" sink drain

Part Number	Description
FT-150	1-1/4" or 1-1/2" drain trap

Drain & Trap Connectors



Connect tubular traps to common household drain pipe

- * 200 Series Stainless Steel
- * Hand tighten only



Drain & Trap Connectors are ideal for new installations, repairs and alterations. Eliminating traditional methods, this product has a quick installation that will leave drain & trap systems leak-free.

Part Number	Description
DTC-150	1-1/2" pipe x 1-1/2" or 1-1/4" tubular traps (use for 2" copper)
DTC-215	2" pipe x 1-1/2" or 1-1/4" tubular traps

Tubular Drain Pipe Connectors



* 200 Series
Stainless Steel.
Hand tighten only

Repair or alter tubular drain pipe

Fernco Tubular Drain Pipe Connectors offer a quick solution to extend, alter or repair any combination of 1-1/2" or 1-1/4" brass or plastic drain pipe. Whether connecting brass or plastic, the PVC material is formulated to provide a reliable connection that can be installed in minutes.

Part Number	Description
TC-150	1-1/4" or 1-1/2" tubular drain pipe

Dishwasher Drain Connector



Connect dishwasher hoses to sink drain or garbage disposals

Fernco Dishwasher Drain Connector connects a dishwasher hose to sink drains and garbage disposals.

* 200 Series Stainless Steel. Hand tighten only

Part Number	Description
DWC-100	1/2" x 3/4" dishwasher drain connector

Flexible Connectors

Shower Drain Connector

Connect drain pipe to shower drain pipes

Fernco Shower Drain Connectors connect 2" DWV plastic, sch. 40 steel, or XHCI pipe to shower drain bodies.



Part Number	Shower Drain Body
SD-200	American Brass & Aluminum, Armstrong (requires cutting to 3/4" height), Casper Model 101-101P, Casper Model 101 BR, Garvin Model 475, Intercon, Kohler, Schual Mfg. Brass Model 1524
SD-210	Mustee 1-piece molded shower base, Owens Corning 1-piece molded shower base

Fix-A-Flange

Repair broken toilet flanges



Fix-A-Flange eliminates the need to replace broken toilet flanges. Suitable for cast iron, plastic, copper and brass flanges, Fix-A-Flange offers a long-term solution to stop wobbly and leaky toilets.

Part Number	Description
SF-100	Fix-A-Flange toilet flange repair

Utility Connectors

Connect small drain lines to DWV plastic sockets



Fernco Utility Connectors are a one-piece connector with a simple press-fit installation.

Part Number	Description
UC-1550	1/2" CPVC or copper to 1-1/2" DWV plastic socket
UC-1575	3/4" CPVC or copper to 1-1/2" DWV plastic socket
UC-1510	1" CPVC or copper to 1-1/2" DWV plastic socket

Note: The Utility Connector is engineered to function in non pressure applications. DO NOT USE in pressure water systems.

Hose Grip Washer Connector

Prevent accidental washer hose spills

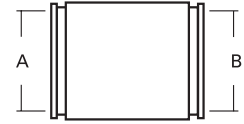


The Fernco Hose Grip Washer Connector holds washing machine hoses securely in their standpipe drains.

Part Number	Description
HG-1	Fits 2" or 1-1/2" standpipe to 1" - 1-7/16" washer hose

1001 & 5001 Series Couplings

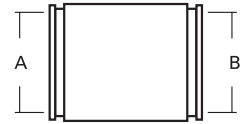
Clay to Clay



NOMINAL PIPE SIZE (INCHES)	STANDARD RANGE "A" x "B"	1000 RC SERIES RANGE "A" x "B"	5000 RC SERIES RANGE "A" x "B"	ECCENTRIC RANGE "A" x "B"
4 x 4	1001-44 5.55 - 4.85 x 5.55 - 4.85	1001-44RC 5.55 - 4.85 x 5.55 - 4.85	5001-44RC 5.30 - 5.06 x 5.30 - 5.06	
4 x 4 WC	1001-44WC 5.85 - 5.15 x 5.85 - 5.15	1001-44WCRC 5.85 - 5.15 x 5.85 - 5.15	5001-44WCRC 5.60 - 5.36 x 5.60 - 5.36	
5 x 4	use 1002-55			
5 x 5	1001-55 6.35 - 5.65 x 6.35 - 5.65	1001-55RC 6.35 - 5.65 x 6.35 - 5.65		
6 x 4	1001-64* 7.60 - 7.00 x 5.80 - 5.10	1001-64RC* 7.75 - 7.00 x 5.75 - 5.00	5001-64RC 7.50 - 7.03 x 5.50 - 5.03	1001-64EB* 7.75 - 7.00 x 5.25 - 4.90
6 x 4 WC	1001-64WC* 8.25 - 7.50 x 5.65 - 5.05			
6 x 5	use 1002-66			
6 x 6	1001-66 7.75 - 7.00 x 7.75 - 7.05	1001-66RC 7.75 - 7.00 x 7.75 - 7.05	5001-66RC 7.50 - 7.03 x 7.50 - 7.03	
6 x 6 WC	1001-66WC 8.25 - 7.50 x 8.25 - 7.50	1001-66WCRC 8.25 - 7.50 x 8.25 - 7.50	5001-66WCRC 8.00 - 7.53 x 8.00 - 7.53	
8 x 4	1001-84* 10.05 - 9.30 x 5.30 - 4.90			
8 x 6	1001-86* 10.05 - 9.30 x 7.30 - 6.75	1001-86RC* 9.85 - 9.20 x 7.40 - 6.90		1001-86EB* 9.85 - 9.20 x 7.40 - 6.90
8 x 6 WC	1001-86WC 10.20 - 9.55 x 7.85 - 7.20	1001-86WCRC* 10.20 - 9.55 x 7.85 - 7.20		
8 x 8	1001-88 9.85 - 9.20 x 9.85 - 9.10	1001-88RC 9.85 - 9.20 x 9.85 - 9.10	5001-88RC 9.65 - 9.18 x 9.65 - 9.18	
8 x 8 WC	1001-88WC 10.20 - 9.55 x 10.20 - 9.55	1001-88WCRC 10.20 - 9.55 x 10.20 - 9.55	5001-88WCRC 10.00 - 9.53 x 10.00 - 9.53	
10 x 8	1001-10-8* 12.70 - 12.00 x 9.75 - 9.25	1001-10-8RC* 12.70 - 12.00 x 9.80 - 9.25		1001-10-8EB* 12.70 - 12.00 x 9.80 - 9.25
10 x 10	1001-1010 12.70 - 12.00 x 12.70 - 12.00	1001-1010RC 12.70 - 12.00 x 12.70 - 12.00	5001-1010RC 12.50 - 12.03 x 12.50 - 12.03	
10 x 10 WC	use 1001-1010	1001-1010WCRC 12.70 - 12.00 x 12.70 - 12.00	5001-1010WCRC 12.50 - 12.03 x 12.50 - 12.03	
12 x 10	use 1002-1212			
12 x 12	1001-1212 14.70 - 13.75 x 14.70 - 13.75	1001-1212RC 14.70 - 13.75 x 14.70 - 13.75	5001-1212RC 14.50 - 14.03 x 14.50 - 14.03	
12 x 12 WC	use 1004-1212	1001-1212WCRC 15.45 - 14.50 x 15.45 - 14.50	5001-1212WCRC 15.25 - 14.78 x 15.25 - 14.78	
15 x 10	1001-1510* 18.65 - 17.00 x 12.65 - 12.20	1001-1510RC* 18.65 - 17.15 x 12.65 - 12.20		
15 x 12	1001-1512* 18.30 - 17.00 x 14.50 - 13.60	1001-1512RC* 18.65 - 17.00 x 14.45 - 13.90		1001-1512EB* 18.65 - 17.00 x 14.45 - 13.90
15 x 15	1001-1515 18.65 - 17.15 x 18.65 - 17.15	1001-1515RC 18.65 - 17.15 x 18.65 - 17.15	5001-1515RC 18.15 - 17.68 x 18.15 - 17.68	
18 x 18	1001-1818 22.50 - 20.85 x 22.50 - 20.85	1001-1818RC 22.50 - 20.85 x 22.50 - 20.85	5001-1818RC 22.00 - 21.53 x 22.00 - 21.53	
21 x 21	1001-2121 25.25 - 23.00 x 25.25 - 23.00	1001-2121RC 25.25 - 23.00 x 25.25 - 23.00		
24 x 24	1001-2424 29.75 - 27.50 x 29.75 - 27.50	1001-2424RC 29.75 - 27.50 x 29.75 - 27.50		
27 x 27	1001-2727 33.15 - 30.90 x 33.15 - 30.90	1001-2727RC 33.15 - 30.90 x 33.15 - 30.90		

NOMINAL PIPE SIZE (INCHES)	STANDARD RANGE "A" x "B"	1000 RC SERIES RANGE "A" x "B"	5000 RC SERIES RANGE "A" x "B"	ECCENTRIC RANGE "A" x "B"
4 x 3	1002-43 5.40 - 4.75 x 3.50 - 3.20	1002-43RC* 5.55 - 4.85 x 3.55 - 3.30	5002-43RC* 5.55 - 4.85 x 3.55 - 3.30	1002-43EB* 5.55 - 4.85 x 3.55 - 3.30
4 x 4	1002-44 5.40 - 4.75 x 4.65 - 4.00	1002-44RC 5.55 - 5.00 x 4.60 - 4.00	5002-44RC 5.40 - 5.16 x 4.50 - 4.26	1002-44EB 5.40 - 4.75 x 4.55 - 3.95
4 x 4 WC	1002-44WC 5.60 - 5.00 x 4.60 - 4.10	1002-44WCRC 5.60 - 5.00 x 4.60 - 4.10	5002-44WCRC* 5.40 - 5.16 x 4.55 - 4.31	
4 x 4 SDR			5002-44SDRRC* 5.40 - 5.16 x 4.30 - 4.06	
4 x 6	1002-46 5.50 - 5.00 x 6.60 - 6.00	1002-46RC* 5.25 - 4.90 x 6.80 - 6.30	5002-46RC* 5.15 - 4.68 x 6.65 - 6.18	1002-46EB* 5.25 - 4.90 x 6.80 - 6.30
5 x 4	1002-54* 6.30 - 5.60 x 4.55 - 3.95	1002-54RC* 6.80 - 6.30 x 4.60 - 4.15		1002-54EB* 6.80 - 6.30 x 4.60 - 4.15
5 x 5	1002-55 6.30 - 5.60 x 5.70 - 5.30	1002-55RC* 6.80 - 6.30 x 5.65 - 5.20	5002-55RC 6.65 - 6.41 x 5.50 - 5.26	1002-55EB* 6.80 - 6.30 x 5.65 - 5.20
6 x 4	1002-64 7.50 - 6.90 x 4.50 - 3.85	1002-64RC* 7.75 - 7.00 x 4.70 - 4.15	5002-64RC* 7.50 - 7.03 x 4.50 - 4.03	1002-64EC 7.85 - 6.90 x 4.69 - 3.95
6 x 4 SDR		1002-64SDRRC* 7.75 - 7.00 x 4.70 - 4.05	5002-64SDRRC* 7.50 - 7.03 x 4.25 - 3.78	
6 x 4 WC	1002-64WC* 8.15 - 7.60 x 4.60 - 4.15	1002-64WCRC* 8.25 - 7.50 x 4.55 - 4.20	5002-64WCRC* 8.00 - 7.53 x 4.50 - 4.03	1002-64WCEB* 8.25 - 7.50 x 4.55 - 4.20
6 x 5	1002-65 7.60 - 7.00 x 5.80 - 5.10	1002-65RC* 7.75 - 7.00 x 5.70 - 5.30		1002-65EB* 7.75 - 7.00 x 5.70 - 5.30
6 x 6	1002-66 7.75 - 7.05 x 6.80 - 6.25	1002-66RC 7.75 - 8.05 x 6.80 - 7.25	5002-66RC 7.50 - 7.03 x 6.65 - 6.18	1002-66EB* 7.75 - 7.00 x 6.75 - 6.50
6 x 6 SDR		1002-66SDRRC* 7.75 - 7.00 x 6.50 - 6.00	5002-66SDRRC* 7.50 - 7.03 x 6.40 - 5.93	
6 x 6 WC	1002-66WC 8.15 - 7.45 x 6.80 - 6.10	1002-66WCRC 8.15 - 8.45 x 6.80 - 7.10	5002-66WCRC 8.00 - 7.53 x 6.65 - 6.18	
8 x 4	1002-84* 9.50 - 8.80 x 4.60 - 4.20	1002-84RC* 9.80 - 9.25 x 4.60 - 4.35		1002-84EB* 9.80 - 9.25 x 4.60 - 4.15
8 x 6	1002-86 9.50 - 8.80 x 6.35 - 5.70	1002-86RC* 9.75 - 9.25 x 6.75 - 6.50	5002-86RC* 9.65 - 9.18 x 6.65 - 6.18	1002-86EB* 9.80 - 9.25 x 6.75 - 6.50
8 x 6 WC	1002-86WC* 10.15 - 9.35 x 6.70 - 6.20	1002-86WCRC* 10.20 - 9.55 x 6.40 - 6.20		
8 x 8	1002-88 9.90 - 9.10 x 8.75 - 7.87	1002-88RC 10.00 - 8.95 x 8.66 - 7.94	5002-88RC 9.75 - 9.28 x 8.60 - 8.13	1002-88EB* 9.75 - 9.25 x 8.85 - 8.30
8 x 8 SDR			5002-88SDRRC* 9.65 - 9.18 x 8.65 - 8.18	
8 x 8 WC	1002-88WC 10.15 - 9.35 x 8.90 - 8.00	1002-88WCRC 9.90 - 9.30 x 8.40 - 8.15	5002-88WCRC 10.00 - 9.53 x 8.65 - 8.18	
10 x 8	1002-10-8* 12.70 - 12.00 x 8.85 - 8.30	1002-10-8RC* 12.70 - 12.00 x 8.85 - 8.30		1002-10-8EB* 12.70 - 12.00 x 8.85 - 8.30
10 x 10	1002-1010 12.70 - 12.00 x 10.75 - 9.75	1002-1010RC* 12.70 - 12.00 x 10.90 - 10.25	5002-1010RC* 12.50 - 12.03 x 10.75 - 10.28	1002-1010EB* 12.70 - 12.00 x 10.75 - 10.25
10 x 10 WC	use 1006-1010	1002-1010WCRC* 12.70 - 12.00 x 11.00 - 10.25	5002-1010WCRC* 12.50 - 12.03 x 10.75 - 10.28	
12 x 10	1002-1210* 14.70 - 13.75 x 11.00 - 10.30	1002-1210RC* 14.70 - 13.75 x 10.75 - 10.15		1002-1210EB* 14.70 - 13.75 x 10.75 - 10.15
12 x 12	1002-1212 14.70 - 13.75 x 12.75 - 11.75	1002-1212RC 14.70 - 13.75 x 12.75 - 11.95	5002-1212RC 14.50 - 14.03 x 12.60 - 12.13	1002-1212EB* 14.70 - 13.75 x 12.75 - 11.95
12 x 12 WC	use 1006-1212	1002-1212WCRC* 15.45 - 14.50 x 12.70 - 11.52	5002-1212WCRC* 15.25 - 14.78 x 12.35 - 11.88	
15 x 10	1002-1510* 18.30 - 17.00 x 10.75 - 10.10	1002-1510RC* 18.65 - 17.00 x 10.75 - 10.10		
15 x 12	1002-1512* 18.30 - 17.00 x 12.70 - 12.10	1002-1512RC* 18.65 - 17.00 x 12.70 - 12.10		1002-1512EB* 18.65 - 17.00 x 12.70 - 12.10
15 x 15	1002-1515 18.30 - 17.00 x 15.60 - 14.30	1002-1515RC* 18.65 - 17.00 x 15.55 - 15.00	5002-1515RC* 18.15 - 17.68 x 15.40 - 14.93	1002-1515EB* 18.65 - 17.00 x 15.55 - 15.00

(Continued from previous page)



**1002 & 5002
Series Couplings**

Clay to Cast Iron, Plastic or Steel

NOMINAL PIPE SIZE (INCHES)	STANDARD RANGE "A" x "B"	1000 RC SERIES RANGE "A" x "B"	5000 RC SERIES RANGE "A" x "B"	ECCENTRIC RANGE "A" x "B"
18 x 18	1002-1818 22.20 - 21.50 x 19.00 - 18.30	1002-1818RC* 22.50 - 20.85 x 18.90 - 18.35	5002-1818RC* 22.00 - 21.53 x 18.80 - 18.33	
21 x 21	1002-2121* 24.80 - 23.30 x 22.40 - 21.80	1002-2121RC* 24.80 - 23.30 x 22.40 - 21.80		
24 x 24	1002-2424* 29.75 - 27.50 x 25.10 - 24.50	1002-2424RC* 29.75 - 27.50 x 25.10 - 24.50		
27 x 27	1002-2727* 32.90 - 31.40 x 28.35 - 27.75	1002-2727RC* 32.90 - 31.40 x 28.35 - 27.75	5002-2727RC* 32.40 - 31.93 x 28.25 - 27.78	

**1003 & 5003
Series Couplings**

Clay to Asbestos, Cement or Ductile Iron

* Insert bushing included.

Red high torque clamps included.

NOMINAL PIPE SIZE (INCHES)	STANDARD RANGE "A" x "B"	1000 RC SERIES RANGE "A" x "B"	5000 RC SERIES RANGE "A" x "B"	ECCENTRIC RANGE "A" x "B"
4 x 4	1003-44 5.45 - 4.90 x 4.90 - 4.40	1003-44RC 5.50 - 4.90 x 5.00 - 4.50	5003-44RC 5.30 - 5.06 x 4.85 - 4.61	
4 x 4 WC	1003-44WC* 5.85 - 5.15 x 5.15 - 4.50	1003-44WCRC* 5.85 - 5.15 x 5.15 - 4.50	5003-44WCRC* 5.60 - 5.36 x 4.95 - 4.71	
4 x 6	use 1051-65	1003-46RC* 5.25 - 4.95 x 7.10 - 6.35		
5 x 4	1003-54* 6.20 - 5.80 x 5.15 - 4.80	1003-54RC* 6.80 - 6.30 x 4.90 - 4.30		
5 x 5	1003-55 6.20 - 5.40 x 6.05 - 5.35			
6 x 4	1003-64 7.60 - 7.00 x 5.80 - 5.10	1003-64RC* 7.75 - 7.00 x 5.20 - 4.70		1003-64EB* 7.75 - 7.00 x 5.20 - 4.70
6 x 4 WC	1003-64WC* 8.25 - 7.50 x 5.10 - 4.65			
6 x 5	1003-65* 7.75 - 7.05 x 7.20 - 6.55			
6 x 6	1003-66 7.45 - 6.75 x 7.05 - 6.45	1003-66RC 7.50 - 6.85 x 6.05 - 6.60	5003-66RC 7.35 - 6.88 x 6.95 - 6.48	
6 x 6 WC	1003-66WC* 8.25 - 7.50 x 7.20 - 6.55	1003-66WCRC 8.25 - 7.50 x 7.20 - 6.55	5003-66WCRC 8.00 - 7.53 x 6.90 - 6.43	
8 x 4	1003-84* 9.90 - 9.10 x 5.05 - 4.60			
8 x 6	1003-86* 9.90 - 9.10 x 7.40 - 6.70	1003-86RC* 9.85 - 9.20 x 7.40 - 6.70		
8 x 6 WC	1003-86WC* 10.15 - 9.35 x 7.50 - 6.70	1003-86WCRC* 10.20 - 9.55 x 7.25 - 6.85		
8 x 8	1003-88 9.75 - 9.10 x 9.25 - 8.60	1003-88RC 9.80 - 9.05 x 9.20 - 8.50	5003-88RC 9.60 - 9.13 x 9.05 - 8.58	
8 x 8 WC	1003-88WC* 10.20 - 9.55 x 9.15 - 8.35	1003-88WCRC* 10.20 - 9.55 x 9.15 - 8.35		
10 x 8	1003-10-8* 12.70 - 12.00 x 9.15 - 8.60	1003-10-8RC* 12.70 - 12.00 x 9.20 - 8.85		1003-10-8EB* 12.70 - 12.00 x 9.20 - 8.85
10 x 10	1003-1010* 12.70 - 12.00 x 11.30 - 10.45	1003-1010RC* 12.70 - 12.00 x 11.30 - 10.45	5003-1010RC* 12.50 - 12.03 x 11.10 - 10.63	
10 x 10 WC	1003-1010WC* 12.70 - 12.00 x 11.30 - 10.45	1003-1010WCRC* 12.70 - 12.00 x 11.30 - 10.45	5003-1010WCRC* 12.50 - 12.03 x 11.10 - 10.63	
12 x 10	1003-1210* 14.70 - 13.75 x 11.30 - 10.45	1003-1210RC* 14.70 - 13.75 x 11.30 - 10.45		
12 x 12	1003-1212 15.00 - 14.00 x 13.50 - 12.60	1003-1212RC* 14.70 - 13.75 x 13.40 - 12.50	5003-1212RC* 14.50 - 14.03 x 13.20 - 12.73	

**1003 & 5003
Series Couplings**
Clay to Asbestos, Cement or Ductile Iron

* Insert bushing included. Red high torque clamps included.

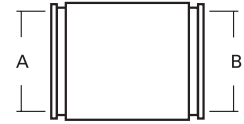
NOMINAL PIPE SIZE (INCHES)	STANDARD RANGE "A" x "B"	1000 RC SERIES RANGE "A" x "B"	5000 RC SERIES RANGE "A" x "B"	ECCENTRIC RANGE "A" x "B"
12 x 12 WC	1003-1212WC* 15.45 - 14.50 x 13.50 - 12.50	1003-1212WCRC* 15.45 - 14.50 x 13.50 - 12.50		
15 x 10	1003-1510* 18.30 - 17.00 x 11.25 - 10.60	1003-1510RC* 18.65 - 17.00 x 11.30 - 10.85		1003-1510EB* 18.65 - 17.00 x 11.30 - 10.85
15 x 12	1003-1512* 18.30 - 17.00 x 13.50 - 12.50	1003-1512RC* 18.65 - 17.00 x 13.40 - 13.00		1003-1512EB* 18.65 - 17.00 x 13.40 - 13.00
15 x 15	1003-1515* 18.65 - 17.00 x 16.75 - 16.10	1003-1515RC* 18.65 - 17.00 x 16.75 - 16.10		
15 x 16	1003-1516 18.65 - 17.15 x 18.65 - 17.15	1003-1516RC 18.65 - 17.15 x 18.65 - 17.15	5003-1516RC 17.50 - 17.03 x 17.50 - 17.03	
18 x 18	1003-1818* 22.50 - 20.85 x 20.00 - 18.50	1003-1818RC* 22.50 - 20.85 x 20.00 - 18.50		
24 x 24	1003-2424* 29.75 - 27.50 x 26.30 - 24.80	1003-2424RC* 29.75 - 27.50 x 26.30 - 24.80		

1004 & 5004 Series Couplings
Concrete to Concrete

NOMINAL PIPE SIZE (INCHES)	STANDARD RANGE "A" x "B"	1000 RC SERIES RANGE "A" x "B"	5000 RC SERIES RANGE "A" x "B"	ECCENTRIC RANGE "A" x "B"
4 x 4	1004-44 5.85 - 5.15 x 5.85 - 5.15	1004-44RC 5.85 - 5.15 x 5.85 - 5.15	5004-44RC 5.60 - 5.36 x 5.60 - 5.36	
6 x 4	1004-64* 8.00 - 7.30 x 5.80 - 5.10			
6 x 6	1004-66 7.90 - 7.30 x 7.90 - 7.30	1004-66RC 7.90 - 7.30 x 7.90 - 7.30	5004-66RC 7.65 - 7.18 x 7.65 - 7.18	
8 x 6	1004-86* 10.50 - 9.75 x 7.90 - 7.20			
8 x 8	1004-88 10.65 - 9.90 x 10.65 - 9.90	1004-88RC 10.65 - 9.90 x 10.65 - 9.90	5004-88RC 10.40 - 9.93 x 10.40 - 9.93	
10 x 8	use 1056-1210			
10 x 10	use 1001-1010	1004-1010RC 12.70 - 12.00 x 12.70 - 12.00	5004-1010RC 12.50 - 12.03 x 12.50 - 12.03	
10 x 10	1004-1010LC 14.50 - 13.00 x 14.50 - 13.00	1004-1010LCRC 14.50 - 13.00 x 14.50 - 13.00		
12 x 10	1004-1210* 15.45 - 14.50 x 12.65 - 11.70			1004-1210EB* 15.45 - 14.50 x 12.65 - 11.70
12 x 12	1004-1212 15.45 - 14.50 x 15.45 - 14.50	1004-1212RC 15.45 - 14.50 x 15.45 - 14.50	5004-1212RC 15.25 - 14.78 x 15.25 - 14.78	
12 x 12 LC	1004-1212LC 16.00 - 15.10 x 16.00 - 15.10	1004-1212LCRC 16.00 - 15.10 x 16.00 - 15.10	5004-1212LCRC 15.80 - 15.33 x 15.80 - 15.33	
15 x 15	1004-1515 20.20 - 18.90 x 20.20 - 18.90	1004-1515RC 20.20 - 18.90 x 20.20 - 18.90		
18 x 18	1004-1818 22.50 - 21.00 x 22.50 - 21.00	1004-1818RC 22.50 - 21.00 x 22.50 - 21.00		
21 x 21	1004-2121 26.60 - 25.10 x 26.60 - 25.10	1004-2121RC 26.60 - 25.10 x 26.60 - 25.10		
24 x 24	1004-2424 30.50 - 29.00 x 30.50 - 29.00	1004-2424RC 30.50 - 29.00 x 30.50 - 29.00		
27 x 27	1004-2727 33.90 - 32.00 x 33.90 - 32.00	1004-2727RC 33.90 - 32.00 x 33.90 - 32.00		

1005 Series Couplings

Concrete to Clay



NOMINAL PIPE SIZE (INCHES)	STANDARD RANGE "A" x "B"	1000 RC SERIES RANGE "A" x "B"	5000 RC SERIES RANGE "A" x "B"	ECCENTRIC RANGE "A" x "B"
4 x 4	1005-44* 5.85 - 5.15 x 5.15 - 4.50	1005-44RC* 5.85 - 5.15 x 5.15 - 4.50		
6 x 4	1005-64* 7.90 - 7.30 x 5.10 - 4.65			1005-64EB* 7.90 - 7.30 x 5.10 - 4.65
6 x 6	1005-66* 7.90 - 7.30 x 7.35 - 6.75			
8 x 6	1005-86* 10.65 - 9.90 x 7.25 - 6.85			
8 x 8	1005-88* 10.65 - 9.90 x 9.80 - 9.15	1005-88RC* 10.65 - 9.90 x 9.80 - 9.15		
10 x 10	use 1001-1010			
12 x 10	1005-1210* 15.45 - 14.50 x 12.65 - 11.70			1005-1210EB* 15.45 - 14.50 x 12.65 - 11.70
12 x 12	1005-1212* 15.45 - 14.50 x 14.50 - 13.60			
15 x 15	1005-1515* 20.20 - 18.90 x 17.55 - 17.30	1005-1515RC* 20.20 - 18.90 x 17.55 - 17.30		

1006 & 5006 Series Couplings

Concrete to Cast Iron, Plastic, or Steel

* Insert bushing included.
Red high torque clamps included.

NOMINAL PIPE SIZE (INCHES)	STANDARD RANGE "A" x "B"	1000 RC SERIES RANGE "A" x "B"	5000 RC SERIES RANGE "A" x "B"	ECCENTRIC RANGE "A" x "B"
4 x 4	1006-44 5.75 - 5.25 x 4.50 - 4.00	1006-44RC 5.80 - 5.25 x 4.60 - 4.30	5006-44RC 5.90 - 5.66 x 4.50 - 4.26	1006-44EB* 5.85 - 5.40 x 4.60 - 4.05
4 x 4 SDR			5006-44SDRRC* 5.90 - 5.66 x 4.35 - 4.11	
4 x 4 LC	1006-44LC 6.10 - 5.60 x 4.70 - 4.20	1006-44LCRC 6.10 - 5.60 x 4.70 - 4.20	5006-44LCRC 5.90 - 5.43 x 4.50 - 4.03	
5 x 4	use 1051-54			
6 x 4	1006-64 7.95 - 7.25 x 4.50 - 4.00	1006-64RC* 7.90 - 7.30 x 4.60 - 4.15	5006-64RC* 7.65 - 7.18 x 4.50 - 4.03	1006-64EB* 7.90 - 7.30 x 4.60 - 4.15
6 x 4			5006-64SDRRC* 7.50 - 7.03 x 4.35 - 3.88	
6 x 5	1006-65* 8.00 - 7.30 x 5.60 - 5.10			1006-65EB* 7.90 - 7.30 x 5.80 - 5.20
6 x 6	1006-66 8.00 - 7.30 x 6.70 - 6.00	1006-66RC 7.65 - 7.05 x 6.60 - 6.40	5006-66RC 7.55 - 7.08 x 6.50 - 6.03	1006-66EB* 7.90 - 7.30 x 6.75 - 6.50
6 x 6 LC		1006-66LCRC 7.90 - 7.30 x 6.55 - 6.30	5006-66LCRC 8.00 - 7.53 x 6.65 - 6.18	
8 x 4	1006-84* 10.50 - 9.75 x 4.60 - 4.15			1006-84EB* 10.65 - 9.90 x 4.55 - 4.40
8 x 6	1006-86* 10.50 - 9.75 x 6.75 - 6.50	1006-86RC* 10.65 - 9.90 x 6.75 - 6.50	5006-86RC* 10.40 - 9.93 x 6.25 - 5.78	1006-86EB* 10.65 - 9.90 x 6.75 - 6.50
8 x 8	1006-88 10.50 - 9.75 x 8.70 - 7.95	1006-88RC 10.75 - 9.90 x 8.75 - 8.50	5006-88RC 10.50 - 10.03 x 8.65 - 8.18	1006-88EB* 10.65 - 9.90 x 8.85 - 8.30
8 x 8 LC	1006-88LC* 12.75 - 11.85 x 8.85 - 8.30			
10 x 8	1006-10-8* 12.75 - 11.85 x 8.85 - 8.30			1006-10-8EB* 12.70 - 12.00 x 8.85 - 8.30
10 x 10	1006-1010 12.85 - 12.00 x 10.75 - 9.85	1006-1010RC* 12.70 - 12.00 x 11.00 - 10.25	5006-1010RC* 12.50 - 12.03 x 10.75 - 10.28	

1006 & 5006 Series Couplings

Concrete to Cast Iron, Plastic, or Steel

NOMINAL PIPE SIZE (INCHES)	STANDARD RANGE "A" x "B"	1000 RC SERIES RANGE "A" x "B"	5000 RC SERIES RANGE "A" x "B"	ECCENTRIC RANGE "A" x "B"
10 x 10 LC	1006-1010LC* 14.50 - 13.53 x 10.75 - 10.13	1006-1010LCRC* 14.50 - 13.53 x 10.75 - 10.13	5006-1010LCRC* 14.00 - 13.53 x 10.60 - 10.13	
12 x 10	1006-1210* 16.50 - 15.50 x 11.00 - 10.25	1006-1210RC* 15.45 - 14.50 x 10.75 - 10.30	5006-1210RC* 15.25 - 14.78 x 10.60 - 10.13	1006-1210EB* 15.45 - 14.50 x 10.75 - 10.10
12 x 10	1006-1210LC* 16.00 - 15.10 x 10.75 - 10.30			
12 x 12	1006-1212 16.50 - 15.50 x 12.60 - 11.75	1006-1212RC* 15.45 - 14.50 x 12.65 - 11.70	5006-1212RC* 15.25 - 14.78 x 12.35 - 11.88	1006-1212EB* 15.45 - 14.50 x 12.65 - 11.70
12 x 12 LC	1006-1212LC* 16.00 - 15.10 x 12.65 - 12.25	1006-1212LCRC* 16.00 - 15.10 x 12.65 - 12.25	5006-1212LCRC* 15.80 - 15.33 x 12.45 - 11.98	1006-1212LCEB* 16.00 - 15.10 x 12.65 - 12.25
15 x 10	1006-1510* 20.25 - 18.75 x 10.75 - 10.10	1006-1510RC* 20.20 - 18.90 x 10.75 - 10.30		
15 x 12	1006-1512* 20.25 - 18.75 x 12.65 - 11.70	1006-1512RC* 20.20 - 18.90 x 12.65 - 12.25		1006-1512EB* 20.20 - 18.90 x 12.65 - 12.25
15 x 15	1006-1515 20.25 - 18.75 x 16.00 - 14.75	1006-1515RC 20.20 - 18.90 x 15.40 - 15.15	5006-1515RC* 19.70 - 19.23 x 15.25 - 14.78	
18 x 18	1006-1818* 22.50 - 21.00 x 20.00 - 18.50	1006-1818RC* 22.50 - 21.00 x 20.00 - 18.50	5006-1818RC* 22.00 - 21.53 x 19.50 - 19.03	
21 x 21	1006-2121* 26.60 - 25.10 x 22.50 - 21.80	1006-2121RC* 26.60 - 25.10 x 22.50 - 21.80		
24 x 24	1006-2424* 30.50 - 29.00 x 25.50 - 24.00	1006-2424RC* 30.50 - 29.00 x 25.50 - 24.00		
27 x 27	1006-2727* 33.90 - 32.00 x 28.25 - 27.50	1006-2727RC* 33.90 - 32.00 x 28.25 - 27.50		

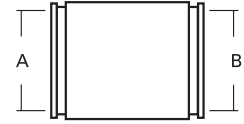
1051 & 5051 Series Couplings

AC, DI to CI, Plastic, or Steel

* Insert bushing included. Red high torque clamps included.

NOMINAL PIPE SIZE (INCHES)	STANDARD RANGE "A" x "B"	1000 RC SERIES RANGE "A" x "B"	5000 RC SERIES RANGE "A" x "B"	ECCENTRIC RANGE "A" x "B"
4 x 4	1051-44 5.00 - 4.35 x 4.60 - 4.00	1051-44RC 5.00 - 4.40 x 4.50 - 4.00	5051-44RC 4.85 - 4.61 x 4.40 - 4.16	1051-44EB* 4.90 - 4.50 x 4.50 - 4.00
4 x 5	1051-45* 5.15 - 4.50 x 5.70 - 5.20	1051-45RC* 5.15 - 4.50 x 5.70 - 5.20		
4 x 6	1051-46* 4.90 - 4.30 x 6.80 - 6.30	1051-46RC* 4.90 - 4.30 x 6.80 - 6.30	5051-46RC* 6.65 - 6.18 x 4.75 - 4.28	1051-46EB* 5.05 - 4.75 x 6.80 - 6.30
5 x 4	1051-54 5.95 - 5.25 x 4.75 - 4.00			1051-54EB* 6.15 - 5.50 x 4.55 - 3.95
5 x 5	1051-55* 6.30 - 5.60 x 5.70 - 5.25	1051-55RC* 6.15 - 5.50 x 5.50 - 5.20		
6 x 4	1051-64* 7.10 - 6.45 x 4.50 - 4.00	1051-64RC* 7.10 - 6.35 x 4.60 - 4.15	5051-64RC* 6.95 - 6.48 x 4.60 - 4.15	1051-64EB* 6.80 - 6.30 x 4.60 - 4.15
6 x 5	1051-65* 7.00 - 6.35 x 5.35 - 4.70	1051-65RC* 7.10 - 6.35 x 5.70 - 5.20		1051-65EB* 6.80 - 6.30 x 5.70 - 5.20
6 x 6	1051-66 7.00 - 6.35 x 6.60 - 6.00	1051-66RC 7.20 - 6.50 x 6.90 - 6.20	5051-66RC 7.00 - 6.53 x 6.70 - 6.23	
8 x 4	1051-84* 9.25 - 8.60 x 4.60 - 4.15	1051-84RC* 9.25 - 8.55 x 4.70 - 4.40	5051-84RC* 9.05 - 8.58 x 4.55 - 4.08	1051-84EB* 9.25 - 8.80 x 4.60 - 4.15
8 x 6	1051-86* 9.25 - 8.60 x 6.75 - 6.50	1051-86RC* 9.25 - 8.55 x 6.75 - 6.50		1051-86EB* 9.25 - 8.55 x 6.75 - 6.50
8 x 8	1051-88 9.25 - 8.60 x 8.70 - 8.00	1051-88RC 9.40 - 8.75 x 8.65 - 7.95	5051-88RC 9.25 - 8.78 x 8.45 - 7.98	
10 x 8	1051-10-8* 11.15 - 10.25 x 8.85 - 8.30	1051-10-8RC* 10.95 - 10.05 x 8.85 - 8.30		
10 x 10	1051-1010 11.15 - 10.25 x 10.75 - 9.90	1051-1010RC 10.95 - 10.05 x 10.70 - 9.80	5051-1010RC 10.75 - 10.28 x 10.50 - 10.03	
12 x 10	1051-1210* 13.20 - 12.25 x 11.00 - 10.25	1051-1210RC* 13.30 - 12.55 x 10.85 - 10.15		1051-1210EB* 13.30 - 12.55 x 10.85 - 10.15

(Continued from previous page)



1051 & 5051 Series Couplings *AC, DI to CI, Plastic, or Steel*

NOMINAL PIPE SIZE (INCHES)	STANDARD RANGE "A" x "B"	1000 RC SERIES RANGE "A" x "B"	5000 RC SERIES RANGE "A" x "B"	ECCENTRIC RANGE "A" x "B"
12 x 12	1051-1212 13.20 - 12.25 x 12.60 - 11.75	1051-1212RC* 13.30 - 12.55 x 12.70 - 11.60	5051-1212RC* 13.05 - 12.58 x 12.35 - 11.88	
12 x 15	1051-1215* 13.50 - 12.50 x 15.75 - 14.50	1051-1215RC* 13.50 - 12.50 x 15.75 - 14.50	5051-1215RC* 13.20 - 12.73 x 15.40 - 14.93	
15 x 10	1051-1510* 16.00 - 14.90 x 10.75 - 10.30			1051-1510EB* 16.00 - 14.90 x 10.75 - 10.30
15 x 12	1051-1512* 16.00 - 14.90 x 12.65 - 12.25			
15 x 15	1051-1515 16.00 - 14.90 x 16.00 - 14.90	1051-1515RC* 16.00 - 14.90 x 16.00 - 14.90		
18 x 18	1051-1818* 20.10 - 19.00 x 19.00 - 18.00	1051-1818RC* 20.10 - 19.00 x 19.00 - 18.00		
24 x 24	1051-2424* 26.30 - 24.30 x 25.30 - 23.30	1051-2424RC* 26.30 - 24.30 x 25.30 - 23.30		

1055 & 5055 Series Couplings *AC or DI to AC or DI*

* Insert bushing included.
Red high torque clamps included.

NOMINAL PIPE SIZE (INCHES)	STANDARD RANGE "A" x "B"	1000 RC SERIES RANGE "A" x "B"	5000 RC SERIES RANGE "A" x "B"	ECCENTRIC RANGE "A" x "B"
4 x 4	1055-44 4.90 - 4.50 x 4.90 - 4.50	1055-44RC 4.90 - 4.50 x 4.90 - 4.50	5055-44RC 4.75 - 4.28 x 4.75 - 4.28	
5 x 4	1055-54* 6.30 - 5.60 x 5.15 - 4.50			
5 x 5	1055-55 6.20 - 5.40 x 6.05 - 5.35			
6 x 4	1055-64 7.00 - 6.15 x 4.90 - 4.30	1055-64RC* 7.10 - 6.35 x 5.10 - 4.80		1055-64EB* 7.10 - 6.35 x 5.10 - 4.80
6 x 5	1055-65 6.95 - 6.20 x 5.90 - 5.30			1055-65EB* 7.10 - 6.35 x 6.10 - 5.60
6 x 6	1055-66 7.10 - 6.35 x 7.10 - 6.35	1055-66RC 7.10 - 6.35 x 7.10 - 6.35	5055-66RC 6.95 - 6.48 x 6.95 - 6.48	
8 x 4	1055-84* 9.25 - 8.60 x 5.05 - 4.60			1055-84EB* 9.25 - 8.55 x 5.15 - 4.75
8 x 6	1055-86* 9.25 - 8.60 x 6.90 - 6.25	1055-86RC* 9.25 - 8.55 x 6.85 - 6.50	5055-86RC* 9.10 - 8.63 x 6.70 - 6.23	1055-86EB* 9.25 - 8.55 x 6.85 - 6.50
8 x 8	1055-88 9.25 - 8.55 x 9.25 - 8.55	1055-88RC 9.25 - 8.55 x 9.25 - 8.55	5055-88RC 9.05 - 8.58 x 9.05 - 8.58	
10 x 8	1055-10-8* 11.15 - 10.25 x 9.15 - 8.60			1055-10-8EB* 10.95 - 10.25 x 9.15 - 8.60
10 x 10	1055-1010 10.95 - 10.25 x 10.95 - 10.25	1055-1010RC 10.95 - 10.25 x 10.95 - 10.25	5055-1010RC 10.75 - 10.28 x 10.75 - 10.28	
12 x 8	1055-12-8* 13.20 - 12.25 x 9.20 - 8.85			
12 x 10	1055-1210* 13.20 - 12.25 x 11.30 - 10.45	1055-1210RC* 13.30 - 12.55 x 11.35 - 10.65		1055-1210EB* 13.30 - 12.55 x 11.35 - 10.65
12 x 12	1055-1212 13.30 - 12.55 x 13.30 - 12.55	1055-1212RC 13.30 - 12.55 x 13.30 - 12.55	5055-1212RC 13.05 - 12.58 x 13.05 - 12.58	
15 x 10	1055-1510* 16.60 - 15.35 x 11.30 - 10.85			
15 x 12	1055-1512* 16.60 - 15.35 x 13.25 - 12.70	1055-1512RC* 16.60 - 15.35 x 13.40 - 13.00		1055-1512EB* 16.60 - 15.35 x 13.40 - 13.00
15 x 15	1055-1515 16.60 - 15.35 x 16.60 - 15.35	1055-1515RC 16.60 - 15.35 x 16.60 - 15.35		
18 x 18	1055-1818 19.60 - 18.10 x 19.60 - 18.10	1055-1818RC 19.60 - 18.10 x 19.60 - 18.10		
24 x 24	1055-2424 26.30 - 24.30 x 26.30 - 24.30	1055-2424RC 26.30 - 24.30 x 26.30 - 24.30		

* Insert bushing included. Red high torque clamps included.

1056 & 5056 Series Couplings *CI, Plastic, Steel to CI, Plastic, Steel*

NOMINAL PIPE SIZE (INCHES)	STANDARD RANGE "A" x "B"	1000 RC SERIES RANGE "A" x "B"	5000 RC SERIES RANGE "A" x "B"	ECCENTRIC RANGE "A" x "B"
0.75 x 0.75	1056-075 1.10 - 0.80 x 1.10 - 0.80			
1 x 1	1056-100 1.35 - 1.05 x 1.35 - 1.05			
1.25 x 1.25	1056-125 1.70 - 1.40 x 1.70 - 1.40			
1.50 x 1.25	1056-150/125 2.05 - 1.70 x 1.70 - 1.40			
1.50 x 1.50	1056-150 2.00 - 1.65 x 2.00 - 1.65	1056-150RC 2.00 - 1.65 x 2.00 - 1.65		
2 x 1.50	1056-215 2.50 - 2.15 x 1.95 - 1.70	1056-215RC* 2.50 - 2.15 x 1.95 - 1.80		
2 x 2	1056-22 2.50 - 2.15 x 2.50 - 2.15	1056-22RC 2.50 - 2.15 x 2.50 - 2.15		
2.50 x 1.25	1056-250/125 3.10 - 2.50 x 1.75 - 1.40	1056-250/125RC* 3.10 - 2.50 x 1.75 - 1.40		
2.50 x 1.50	1056-250/150 3.10 - 2.50 x 2.00 - 1.65	1056-250/150RC* 3.10 - 2.50 x 2.00 - 1.65		
2.50 x 2	1056-250/22 3.00 - 2.70 x 2.50 - 2.25	1056-250/22RC* 3.00 - 2.70 x 2.50 - 2.25		
2.50 x 2.50	1056-250 3.10 - 2.50 x 3.10 - 2.50	1056-250RC 3.00 - 2.70 x 3.00 - 2.70		
3 x 1.50	1056-315 3.50 - 3.15 x 1.95 - 1.65			1056-315EB* 3.70 - 3.15 x 1.95 - 1.80
3 x 2	1056-32 3.65 - 3.15 x 2.50 - 2.20	1056-32RC* 3.70 - 3.15 x 2.50 - 2.25		1056-32EB* 3.70 - 3.15 x 2.50 - 2.25
3 x 2.50	1056-3/250* 3.70 - 3.15 x 3.00 - 2.75	1056-3/250RC* 3.70 - 3.15 x 3.00 - 2.75		
3 x 3	1056-33 3.70 - 3.15 x 3.70 - 3.10	1056-33RC 3.70 - 3.15 x 3.70 - 3.10	5056-33RC 3.50 - 3.26 x 3.50 - 3.26	
4 x 1.50	1056-415 4.50 - 4.00 x 1.95 - 1.75			
4 x 2	1056-42 4.50 - 4.00 x 2.50 - 2.25	1056-42RC* 4.60 - 4.10 x 2.50 - 2.30		1056-42EB* 4.60 - 4.10 x 2.50 - 2.30
4 x 3	1056-43 4.65 - 4.25 x 3.65 - 3.25	1056-43RC* 4.65 - 4.25 x 3.50 - 3.30	5056-43RC* 4.50 - 4.26 x 3.50 - 3.26	1056-43EB* 4.65 - 4.25 x 3.50 - 3.30
4 x 4	1056-44 4.65 - 4.10 x 4.65 - 4.10	1056-44RC 4.65 - 4.10 x 4.65 - 4.10	5056-44RC 4.50 - 4.26 x 4.50 - 4.26	
5 x 4	1056-54 5.65 - 5.25 x 4.50 - 4.00	1056-54RC* 5.70 - 5.10 x 4.55 - 3.95	5056-54RC* 5.50 - 5.03 x 4.40 - 3.93	1056-54EB* 5.70 - 5.10 x 4.60 - 4.05
5 x 5	1056-55 5.70 - 5.10 x 5.70 - 5.10	1056-55RC 5.70 - 5.10 x 5.70 - 5.10		
6 x 4	1056-64 6.85 - 6.25 x 4.60 - 4.10	1056-64RC* 6.85 - 6.25 x 4.55 - 4.40	5056-64RC* 6.65 - 6.18 x 4.50 - 4.03	1056-64EB* 6.80 - 6.30 x 4.60 - 4.15
6 x 5	1056-65 6.65 - 6.10 x 5.65 - 5.15	1056-65RC* 6.80 - 6.30 x 5.70 - 5.10	5056-65RC* 6.65 - 6.18 x 5.50 - 5.03	1056-65EB* 6.80 - 6.30 x 5.70 - 5.10
6 x 6	1056-66 6.80 - 6.30 x 6.80 - 6.30	1056-66RC 6.80 - 6.30 x 6.80 - 6.30	5056-66RC 6.65 - 6.18 x 6.65 - 6.18	
8 x 4	1056-84* 8.60 - 8.05 x 4.55 - 4.20	1056-84RC* 8.75 - 8.00 x 4.65 - 4.25		1056-84EB* 8.75 - 8.00 x 4.65 - 4.25
8 x 6	1056-86 8.60 - 8.05 x 6.50 - 6.10	1056-86RC* 8.75 - 8.00 x 6.75 - 6.50	5056-86RC* 8.65 - 8.18 x 6.35 - 5.88	1056-86EB* 8.75 - 8.00 x 6.75 - 6.50
8 x 8	1056-88 8.75 - 8.00 x 8.75 - 8.00	1056-88RC 8.75 - 8.00 x 8.75 - 8.00	5056-88RC 8.65 - 8.18 x 8.65 - 8.18	

(Continued from previous page)

**1056 & 5056
Series Couplings**

CI, Plastic, Steel to CI, Plastic, Steel



NOMINAL PIPE SIZE (INCHES)	STANDARD RANGE "A" x "B"	1000 RC SERIES RANGE "A" x "B"	5000 RC SERIES RANGE "A" x "B"	ECCENTRIC RANGE "A" x "B"
10 x 8	1056-10-8 10.60 - 9.60 x 8.65 - 7.85	1056-10-8RC* 10.80 - 10.10 x 8.85 - 8.30	5056-10-8RC* 10.65 - 10.18 x 8.65 - 8.18	1056-10-8EB* 10.80 - 10.10 x 8.85 - 8.30
10 x 10	1056-1010 10.80 - 10.10 x 10.80 - 10.10	1056-1010RC 10.80 - 10.10 x 10.80 - 10.10	5056-1010RC 10.65 - 10.18 x 10.65 - 10.18	
12 x 10	1056-1210 12.75 - 11.85 x 10.80 - 10.00	1056-1210RC* 12.75 - 12.00 x 11.00 - 10.25	5056-1210RC* 12.55 - 12.08 x 10.75 - 10.28	1056-1210EB* 12.75 - 12.00 x 10.75 - 10.25
12 x 12	1056-1212 12.75 - 12.00 x 12.75 - 12.00	1056-1212RC 12.75 - 12.00 x 12.75 - 12.00	5056-1212RC 12.55 - 12.08 x 12.55 - 12.08	
15 x 10	1056-1510* 15.75 - 15.40 x 11.00 - 10.25			1056-1510EB* 15.75 - 14.50 x 10.75 - 10.10
15 x 12	1056-1512* 16.35 - 15.50 x 12.60 - 11.75	1056-1512RC* 15.75 - 14.50 x 12.65 - 11.70		1056-1512EB* 15.75 - 14.50 x 12.65 - 11.70
15 x 15	1056-1515 15.75 - 14.50 x 15.75 - 14.50	1056-1515RC 15.75 - 14.50 x 15.75 - 14.50	5056-1515RC 15.40 - 14.93 x 15.40 - 14.93	
18 x 18	1056-1818 19.00 - 17.50 x 19.00 - 17.50	1056-1818RC 19.00 - 17.50 x 19.00 - 17.50	5056-1818RC 18.50 - 18.03 x 18.50 - 18.03	
21 x 21	1056-2121 22.50 - 20.50 x 22.50 - 20.50	1056-2121RC 22.50 - 20.50 x 22.50 - 20.50		
24 x 24	1056-2424 25.00 - 23.00 x 25.00 - 23.00	1056-2424RC 25.00 - 23.00 x 25.00 - 23.00	5056-2424RC 24.50 - 24.03 x 24.50 - 24.03	
27 x 27	1056-2727 28.20 - 26.20 x 28.20 - 26.20	1056-2727RC 28.20 - 26.20 x 28.20 - 26.20		

* Insert bushing included.
Red high torque clamps included.

CUSTOM CONNECTIONS Any size, any material.

Resources

* Insert bushing included.
Red high torque clamps included.

1057 & 5057 Series Couplings

Concrete to DI

NOMINAL PIPE SIZE (INCHES)	STANDARD RANGE "A" x "B"	1000 RC SERIES RANGE "A" x "B"	5000 RC SERIES RANGE "A" x "B"	ECCENTRIC RANGE "A" x "B"
4 x 4	1057-44* 5.85 - 5.15 x 5.15 - 4.50	1057-44RC* 5.85 - 5.15 x 5.15 - 4.50		
6 x 4	1057-64* 7.90 - 7.30 x 5.15 - 4.50			1057-64EB* 7.90 - 7.30 x 5.15 - 4.50
6 x 6	1057-66* 7.90 - 7.30 x 6.90 - 6.25	1057-66RC* 7.90 - 7.30 x 6.90 - 6.25		
6 x 8	1057-68* 9.25 - 8.55 x 7.85 - 7.20	1057-68RC* 9.25 - 8.55 x 7.85 - 7.20		1057-68EBRC* 9.25 - 8.55 x 7.85 - 7.20
8 x 6	1057-86* 10.20 - 9.50 x 6.90 - 6.25	1057-86RC* 10.65 - 9.90 x 6.90 - 6.25		
8 x 8	1057-88 10.20 - 9.50 x 9.00 - 8.45	1057-88RC* 10.65 - 9.90 x 9.15 - 8.60		
10 x 10	1057-1010* 12.70 - 12.00 x 11.30 - 10.45	1057-1010RC* 12.70 - 12.00 x 11.30 - 10.45		
10 x 10 LC			5057-1010LCRC* 14.00 - 13.53 x 11.10 - 10.63	
12 x 6	1057-12-6* 15.45 - 14.50 x 6.90 - 6.25			1057-12-6EB* 15.45 - 14.50 x 6.90 - 6.25
12 x 8	1057-12-8* 16.50 - 15.50 x 9.20 - 8.85			1057-12-8EB* 15.75 - 14.50 x 9.20 - 8.85
12 x 10	1057-1210* 16.50 - 15.50 x 11.30 - 10.45			
12 x 10 LC	1057-1210LC* 16.00 - 15.10 x 11.30 - 10.45			
12 x 12	1057-1212* 15.45 - 14.50 x 13.50 - 12.50	1057-1212RC* 15.45 - 14.50 x 13.50 - 12.50		
12 x 12 LC	1057-1212LC* 16.00 - 15.10 x 13.50 - 12.50	1057-1212LCRC* 16.00 - 15.10 x 13.50 - 12.50		
15 x 8	1057-15-8* 20.25 - 18.75 x 9.20 - 8.85			1057-15-8EB* 20.25 - 18.75 x 9.20 - 8.85
15 x 10	1057-1510* 20.25 - 18.75 x 11.30 - 10.45			
15 x 12	1057-1512* 20.25 - 18.75 x 13.50 - 12.50	1057-1512RC* 20.20 - 18.90 x 13.50 - 12.50		
15 x 15	1057-1515* 20.20 - 18.90 x 16.75 - 16.10	1057-1515RC* 20.20 - 18.90 x 16.75 - 16.10		
18 x 18	1057-1818* 22.50 - 21.00 x 19.80 - 19.35	1057-1818RC* 22.50 - 21.00 x 19.80 - 19.35		
24 x 24	1057-2424* 30.50 - 29.00 x 25.90 - 25.45	1057-2424RC* 30.50 - 29.00 x 25.90 - 25.45		

CUSTOM CONNECTIONS Any size, any material.

Plumbing Market Sales Reps

USA

1. David Gooding, Inc.
Brockton, MA
(508) 894-2000
ME, NH, VT, MA, RI, CT

2. Empire State Assoc.
Ballston Spa, NY
(518) 602-0271
NY

3. Altherm, Inc.
Englewood, NJ
(201) 871-0500
New York City, Long Island,
Northern New Jersey

4. Rich-Tomkins Company, Inc.
Aston, PA
(610) 859-3552
E. PA, Southern NJ, DE

5. Fehr & Cuda Sales, Inc.
Greensburg, PA
(724) 838-9394
West PA & WV

6. Lowder Sales
Lewis Center, OH
(800) 221-5650
OH

7. Lozuaway & Assoc.
Grand Blanc, MI
(810) 234-1635
MI

8. Ashworth—Train Assoc.
Indianapolis, IN
(317) 722-1950
IN

9. Kast Marketing, Inc.
Bensonville, IL
(630) 227-0600
N. IL

10. McCullough & Assoc.
Edina, MN
(952) 946-0126
MN, WI, ND, SD, Upper MI

11. I and N Marketing Group
Earlham, IA
(515) 758-2956
IA, NE

12. Mack McClain & Assoc.
Olathe, KS
(913) 339-6677
KS, W. MO

13. T.M. Sales
Denver, CO
(303) 375-1515
CO, MT, WY

14. McGregor & Assoc.
West Jordan, UT
(801) 566-8225
UT, ID

15. Gordon & Assoc.
Vancouver, WA
(360) 566-1470
WA, OR, AK

16. RD/Kincaide & Assoc.
Benicia, CA
(707) 745-3655
N. CA & N. NV

17. Carrhill Company
City of Commerce, CA
(323) 724-6087
S. CA, Clark County, NV, HI

18. New Horizon Sales, Inc.
Phoenix, AZ
(602) 437-4795
AZ

19. Stan Roberts & Assoc., Inc.
Houston, TX
(713) 224-9845
South TX

Dallas, TX
(214) 637-2816
North TX

20. PSA
Little Rock, AR
(501) 312-8700
AR

21. OK! Sales
Broken Arrow, OK
(405) 794-5200
Tulsa, OK

22. Mack McClain
St. Louis, MO
(314) 894-8188
S. IL, E. MO

23. Billingsley BWC
Kenner, LA
(504) 602-8100
LA, MS

24. Wm. M. McClain Co, Inc.
Nashville, TN
(615) 226-9601
TN

25. Wiggs-Haun & Bohan
Nashville, TN
(615) 350-8334
AL, Panhandle FL

26. United Sales Agency
Marietta, GA
(770) 514-7444
GA

27. Carr Company
Boca Raton, FL
(561) 997-0999
FL, except Panhandle

28. Carolina Sales
Charlotte, NC
(803) 831-7227
NC, SC

29. Barger & Assoc.
Yorktown, MD
(888) 697-3755
VA, D.C., MD

30. Pinnacle Marketing
Albuquerque, NM
(502) 345-2700
NM

31. Kemper Sales & Assoc.
Nicholasville, KY
(859) 881-8624
KY

PUERTO RICO

33. Inter American Builders
Agencies
Carolina, PR
(787) 752-0200
Puerto Rico

MEXICO

34. Ardent Sales
Long Beach, CA
(562) 552-4169
Mexico

CANADA

40. Barclay Sales LTD.
Port Coquitlam, BC
(604) 945-1010

41. Spectrum Sales Agencies
1982 LTD.
Calgary, Alberta
(403) 255-8332

Edmonton, Alberta
(780) 486-2525

42. Jones Goodridge
Winnipeg, Manitoba
(204) 632-6221
Regina, Sask
(306) 585-2854

Saskatoon, Sask
(306) 933-4377

43. Showerline Sales LTD.
London, Ontario
(519) 657-2694
Waterloo, Ontario
(519) 885-1578

44. Armco Agencies LTD.
Mississauga, Ontario
(905) 238-8448

45. Ventes Bergeron Sales
Russell, Ontario
(613) 445-4170

46. Northern Mechanical Sales
Garson, Ontario
(705) 693-2715

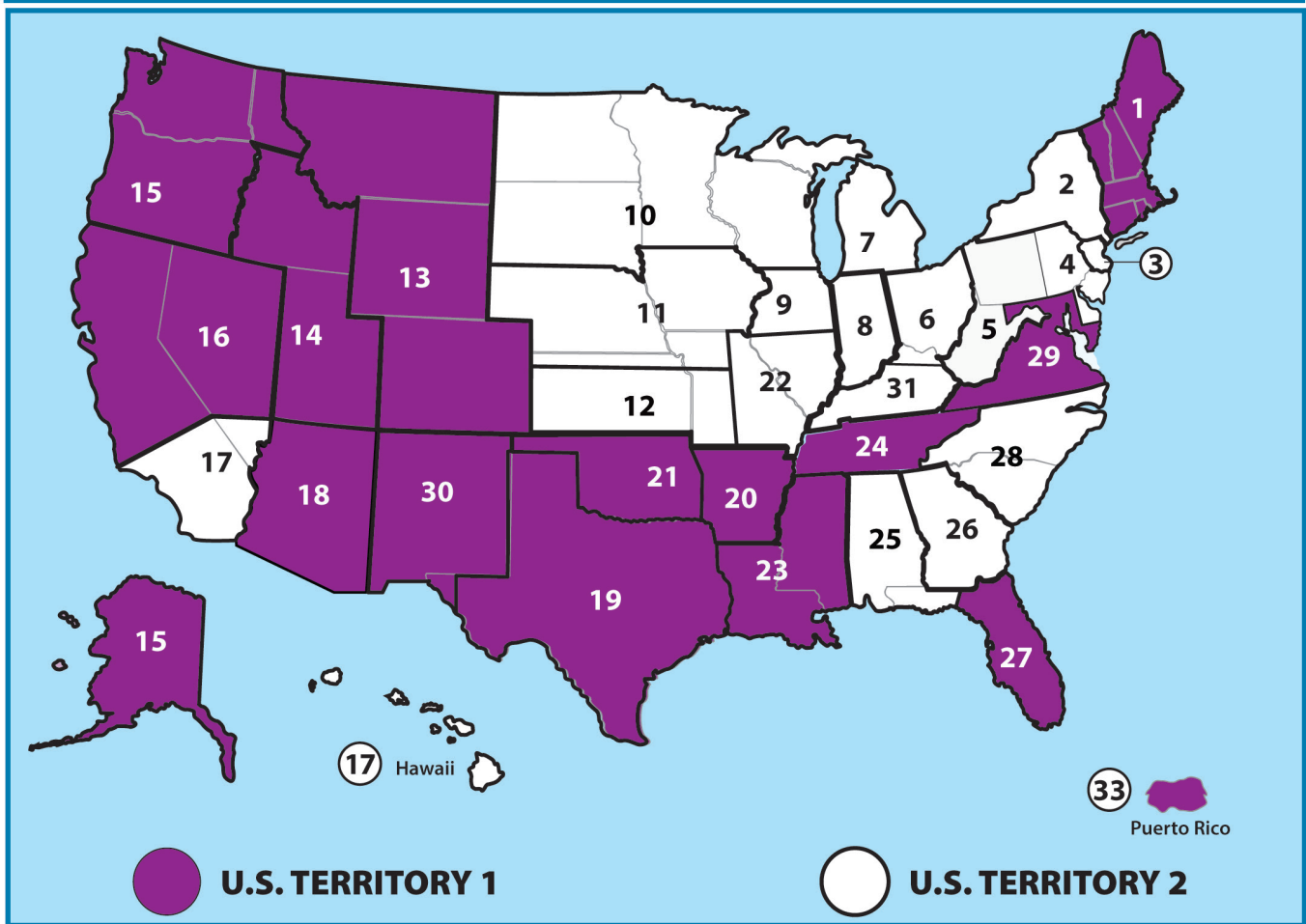
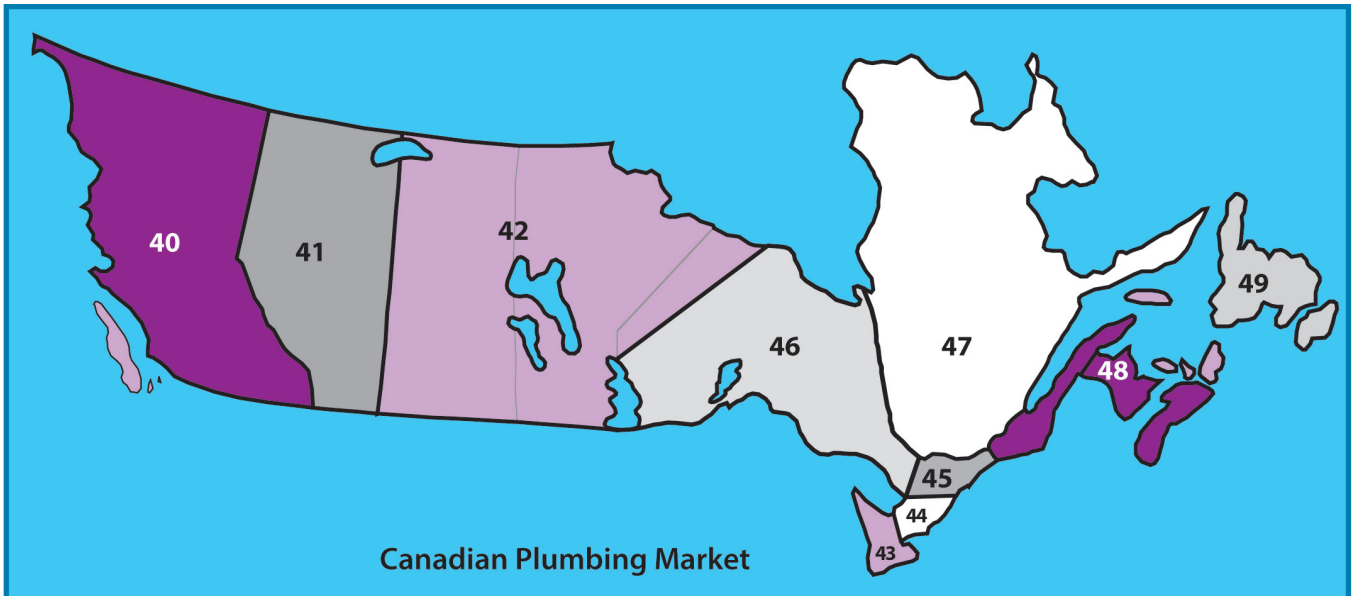
47. Agencies J. Pierre
Sylvain, Inc.
Boucherville, Que.
(450) 655-9588

Quebec, PQ
(418) 570-0703

48. CBA Sales Agency
Moncton, NB
(506) 874-1124

49. CBA Sales Agency
Moncton, NB
(506) 874-1124

Plumbing Market Sales Reps



Resources

WaterWorks Market Sales Map

USA

- 1. David Gooding, Inc.**
Brockton, MA
(508) 894-2000
ME, NH, VT, MA, RI, CT
- 2. Empire State Assoc.**
Ballston Spa, NY
(518) 602-0271
NY
- 3. Saga Sales, Inc.**
Englewood, NJ
(908) 505-9990
New York City, Long Island,
Northern New Jersey
- 4. Charles Morrow & Assoc.**
Center Valley, PA
(304) 472-9005
E. PA, S. NJ, DE, VA, D.C., MD
- 5. Fehr & Cuda Sales, Inc.**
Greensburg, PA
(724) 838-9394
West PA & WV
- 6. Hydrosource**
Chagrin Falls, OH
(440) 247-9150
IN, OH, Lower MI
- 7. Eaton Mechanical Sales**
Prairie View, IL
(847) 980-7253
N. IL
- 8. Mack McClain & Assoc.**
Olathe, KS
(913) 339-6677
KS, W. MO

St. Louis, MO
(314) 894-8188
S. IL, E. MO
- 9. I and N Marketing Group**
Earlham, IA
(515) 758-2956
IA, NE
- 10. McCullough & Assoc.**
Edina, MN
(952) 946-0126
MN, WI, ND, SD, Upper MI

- 11. Repmasters, Inc.**
Commerce City, CO
(303) 286-7575
CO, MT, WY
- 12. McGregor & Assoc.**
West Jordan, UT
(801) 566-8225
UT, ID
- 13. Gordon & Assoc.**
Vancouver, WA
(360) 566-1470
WA, OR, AK, HI
- 14. RD/Kincaide & Assoc.**
Benicia, CA
(707) 745-3655
N. CA & N. NV
- 15. Stan Roberts & Assoc., Inc.**
Houston, TX
(713) 224-9845
South TX

Dallas, TX
(214) 637-2816
North TX
- 16. PSA**
Little Rock, AR
(501) 312-8700
AR
- 17. OK! Sales**
Broken Arrow, OK
(405) 794-5200
OK
- 18. Billingsley BWC**
Kenner, LA
(504) 602-8100
LA, MS
- 19. Wm. M. McClain Co, Inc.**
Nashville, TN
(615) 226-9601
TN
- 20. Wiggs-Haun & Bohan**
Nashville, TN
(615) 350-8334
AL

- 21. Aqualine Sales**
Buford, GA
(770) 932-9001
GA
- 22. Infratech Group LLC**
Orlando, FL
(407) 291-2341
FL
- 23. Ultratech Water Resources**
Shelby, NC
(704) 445-0220
NC, SC
- 24. Pinnacle Marketing**
Albuquerque, NM
(502) 345-2700
NM, El Paso, TX
- 25. Kemper Sales & Assoc.**
Nicholasville, KY
(859) 881-8624
KY
- 26. New Horizon Sales, Inc.**
Phoenix, AZ
(602) 437-4795
Clark County, NV, AZ
- 27. W4 (Westcoast Water Works Warehouse)**
Corona, CA
(951) 279-4444
S. CA
- 28. JT Sales Company**
Temecula, CA
(951) 501-6859
S. CA

PUERTO RICO

- 29. Inter American Builders Agencies**
Carolina, PR
(787) 752-0200
Puerto Rico

MEXICO

- 40. Ardent Sales**
Long Beach, CA
(562) 552-4169
Mexico

CANADA

- 30. Barclay Sales LTD.**
Port Coquitlam, BC
(604) 945-1010
- 31. Spectrum Sales Agencies 1982 LTD.**
Calgary, Alberta
(403) 255-8332

Edmonton, Alberta
(780) 486-2525
- 32. Jones Goodridge**
Winnipeg, Manitoba
(204) 632-6221

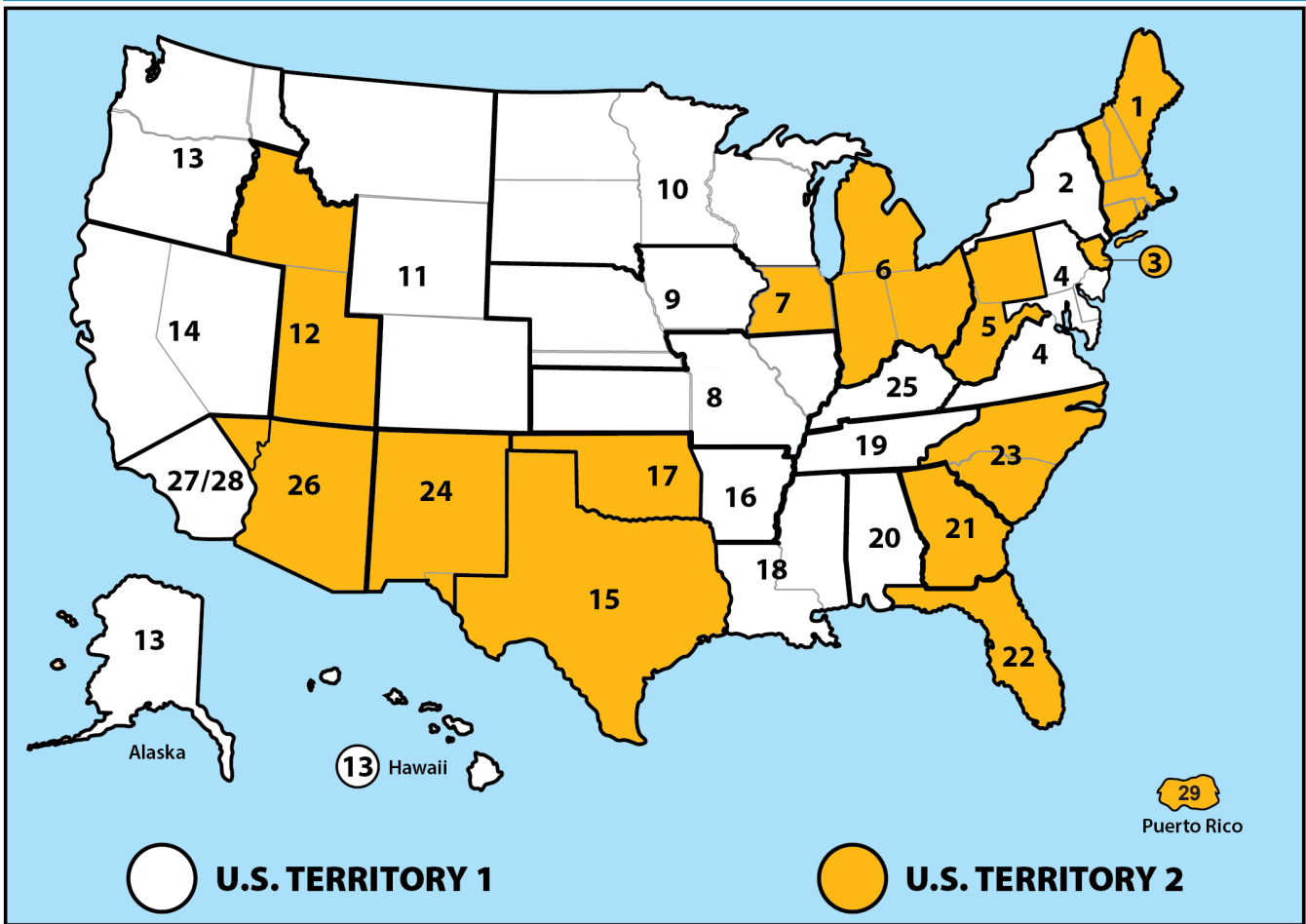
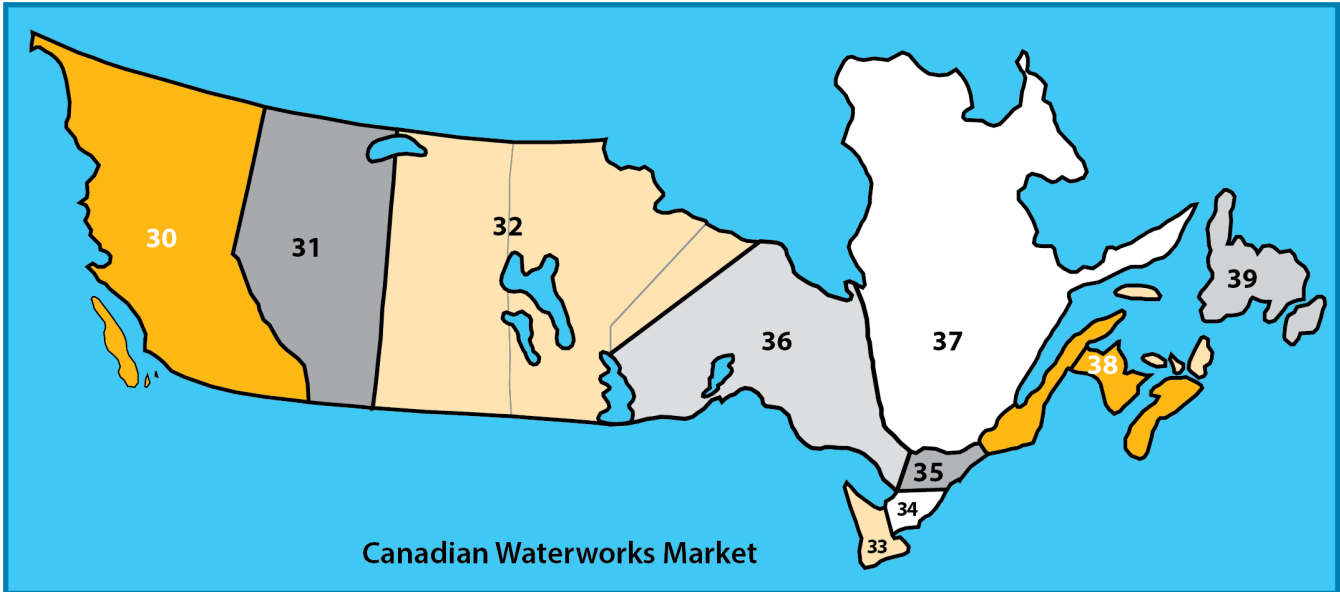
Regina, Sask
(306) 585-2854

Saskatoon, Sask
(306) 933-4377
- 33. Showerline Sales LTD.**
London, Ontario
(519) 657-2694

Waterloo, Ontario
(519) 885-1578
- 34. Armco Agencies LTD.**
Mississauga, Ontario
(905) 238-8448
- 35. Ventes Bergeron Sales**
Russell, Ontario
(613) 445-4170
- 36. Northern Mechanical Sales**
Garson, Ontario
(705) 693-2715
- 37. Agencies J. Pierre Sylvain, Inc.**
Boucherville, Que.
(450) 655-9588

Quebec, PQ
(418) 570-0703
- 38. CBA Sales Agency**
Moncton, NB
(506) 874-1124
- 39. CBA Sales Agency**
Moncton, NB
(506) 874-1124

WaterWorks Market Sales Reps



Resources

Acid Resistance Chart

Maximum test pressure: 4.3 PSI (29.6 KPA)

Maximum operating temperature: 140° F non-consistent

Reagent	Flexible Coupling 70°F	Proflex 70°F	Reagent	Flexible Coupling 70°F	Proflex 70°F	Reagent	Flexible Coupling 70°F	Proflex 70°F
Acetic Acid 20%	R	R	Disodium Phosphate	N	N	Silver Cyanide	R	R
Acetic Acid 80%	N	N	Distilled Water	R	R	Silver Nitrate	R	R
Acetone	N	N	Ethers	N	N	Silver Sulfate	R	R
Alcohol (Methyl or Ethyl)	R	R	Ethyl Acetate	N	N	Sodium Bicarbonate	R	R
Aluminum Chloride	R	R	Ethylene Chloride	N	N	Sodium Bisulfite	R	R
Aluminum Sulfate	R	R	Ethylene Glycol	R	R	Sodium Carbonate	R	R
Alums	R	R	Fatty Acids (C6)	R	R	Sodium Cyanide	R	R
Ammonia Gas (Dry)	R	R	Ferric Chloride	R	R	Sodium Ferrocyanide	R	R
Ammonium Chloride	R	R	Ferric Sulfate	R	R	Sodium Hydroxide	R	R
Ammonium Hydroxide	R	R	Fluorine (Gas Wet)	N	N	Sodium Hypochlorite	R	N
Ammonium Nitrate	R	R	Formaldehyde (20%)	R	R	Sodium Sulfate	R	R
Ammonium Phosphate	R	R	Formic Acid (10%)	R	R	Sodium Sulfide	R	R
Ammonium Sulfate	R	R	Freon 12 Dry	N	R	Sodium Sulfite	R	R
Ammonium Sulfide	R	R	Fruit Juices & Pulp	R	R	Sodium Thiosulfate	R	N
Amyl Chloride	N	N	Furfural	N	N	Stannic Chloride	R	N
Aniline	N	N	Gasoline (Refined)	N	N	Stannous Chloride	R	R
Aqua Regia	N	N	Glucose	R	R	Stearic Acid	R	R
Barium Chloride	R	R	Glycerine	R	R	Sulfite Liquor	R	R
Barium Hydroxide	R	R	Hydrobromic Acid (20%)	R	N	Sulfur	R	N
Barium Sulfate	R	R	Hydrochloric Acid	R	N	Sulfur Dioxide (Dry)	R	N
Barium Sulfide	R	R	Hydrocyanic Acid	R	R	Sulfur Dioxide (Wet)	R	N
Beer	R	R	Hydroquinone	R	N	Sulfuric Acid 50%	R	R
Beet Sugar Liquors	R	R	Hypochlorous Acid	R	N	Sulfuric Acid 70%	N	N
Benzene	N	N	Iodine	N	N	Sulfuric Acid 93%	N	N
Benzoic Acid	R	N	Kerosene	N	N	Sulfurous Acid	R	N
Black Liquor	R	R	Lactic Acid 25%	R	R	Tannic Acid	R	R
Bleach 12.5% active Cl ₂	R	N	Linseed Oil	R	R	Tanning Liquors	R	R
Boric Acid	R	R	Liquors	N	N	Tartaric Acid	R	R
Bromic Acid	R	N	Machine Oil	N	N	Toluene	N	N
Bromine Water	N	N	Magnesium Chloride	R	R	Trichloroethylene	N	N
Butane	N	R	Magnesium Sulfate	R	R	Triethanolamine	N	N
Butyric Acid	N	N	Maleic Acid	N	N	Trisodium Phosphate	R	R
Calcium Carbonate	R	R	Methyl Chloride	N	N	Turpentine	N	N
Calcium Chloride	R	R	Methyl Ethyl Ketone	N	N	Urea	R	R
Calcium Hydroxide	R	R	Milk	R	R	Urine	R	R
Calcium Hypochlorite	R	N	Mineral Oils	N	R	Vinegar	R	R
Calcium Sulfate	R	R	Muriatic Acid	R	N	Water (Fresh)	R	R
Cane Sugar Liquors	R	R	Nickel Chloride	R	R	Water (Salt)	R	R
Carbon Bisulfide	N	N	Nickel Sulfate	R	R	Whiskey	R	R
Carbon Dioxide	R	R	Nitric Acid 0-40%	R	N	Wines	R	R
Carbon Monoxide	R	R	Nitric Acid 41-100%	N	N	Xylene	N	N
Carbon Tetrachloride	N	N	Oleic Acid	N	N	Zinc Chloride	R	R
Carbon Acid	R	R	Oleum	N	N	Zinc Sulfate	R	R
Caustic Soda	R	N	Oxalic Acid	R	R			
Caustic Soda 50%	R	R	Palmitic Acid 10%	R	R			
Caustic Potash	R	R	Perchloric Acid	N	N			
Chloride (Dry)	N	N	Petroleum Oils (Sour)	N	N			
Chloride (Wet)	N	N	Phenol 5%	N	N			
Chloroacetic Acid	N	N	Phosphorous Trichloride	N	N			
Chlorobenzene	N	N	Photographic Solutions	R	R			
Chloroform	N	N	Picric Acid	N	N			
Chromic Acid 10%	R	N	Plating Solution	R	R			
Chromic Acid 50%	N	N	Potassium Carbonate	R	R			
Citric Acid	R	R	Potassium Chlorate	R	R			
Copper Chloride	R	R	Potassium Chloride	R	R			
Copper Cyanide	R	R	Potassium Cyanide	R	R			
Copper Nitrate	R	R	Potassium Dichromate	R	R			
Copper Sulfate	R	R	Potassium Hydroxide	R	R			
Cottonseed Oil	R	R	Potassium Permanganate 10%	R	R			
Cresol	N	N	Potassium Sulfate	R	R			
Cyclohexanol	N	R	Propane Gas	R	R			
Cyclohexanone	N	N	Propyl Alcohol	R	R			
Dimethylamine	N	N	Sea Water	R	R			
Diocetyl Pthalate	N	N	Sewerage	R	R			

NOTE: The data listed in this table is only to give information in regard to general use and does not constitute a guarantee. Materials should be tested under actual service to determine suitability for a particular purpose.

R - Recommended N - Not Recommended

TERMS

All prices shown are Trade/List, stated in U.S. currency and subject to change without notice

MINIMUM INVOICE - None

PAYMENT TERMS - 1% 10th prox. NET 30 days unless otherwise stated. Shortage claims must be made to Fernco within 15 days after delivery

FREIGHT TERMS - Prepaid and allowed on net order of \$750.00 or more unless otherwise stated. All others will be prepaid and billed. Claims for loss or damage must be filed with the freight carrier

SALES POLICY - Fernco products are available to any legitimate wholesaler, pipe manufacturer or distributor with approved credit

RETURN POLICY - All returns must be preceded by factory authorization. Minimum 15% restocking charge will apply to all standard Fernco products. All materials returned to Fernco should be in original cartons and be in resalable condition. This amount is subject to change depending on condition of items returned to Fernco

- Fernco Custom Parts are Non-Refundable
- Freight must be prepaid on all return shipments
- Returns will not be allowed after 90 days of invoice date

LIMITED WARRANTY

Fernco warrants its product(s) against defects in workmanship or materials for one (1) year from date of original purchase (unless a shorter period is expressly provided with respect to a particular product). Fernco's total liability under any warranty, or any other claim arising in any way from the product or its use, is limited, at Fernco's option, to refund or replacement of any such product returned to Fernco within the one-year warranty period and determined by Fernco to be defective. To the extent permitted by law, Fernco disclaims and excludes any and all other warranties, express or implied, including without limitation any implied warranty of merchantability or fitness for a particular purpose, and in no event shall Fernco be liable for special, incidental or consequential damages. Failure to follow the installation instructions provided by Fernco will void this warranty. To make a warranty claim, purchaser should have the original receipt and contact Fernco, Inc. Customer Service Department, 810-503-9000. Purchaser is responsible for any shipping charges.

If state law preserves implied warranties, including implied warranties of merchantability and fitness for a particular purpose, such warranties are limited to one-year from the date of the original purchase and as otherwise set forth above. Some states do not allow limitations on how long an implied warranty lasts, or the exclusion of incidental or consequential damages, so such limitation(s) or exclusion(s) may not apply to you.

This written warranty gives you specific legal rights, and you may also have other rights which vary from state to state.



Fernco, Inc.

300 S. Dayton St.
Davison, MI 48423
fernco.com
P: (810) 503-9000
F: (810) 503-1015

Fernco West

855 Linda Way
Sparks, NV 89431
fernco.com
P: (810) 503-9000
F: (810) 503-1015

Fernco Connectors LTD

850 Philip Street E.
Sarnia, Ontario N7T 1Z6
fernco.ca
P: (519) 332-6711
F: (519) 332-8610



Fernco
Inc.

Certified Product Quick Reference Sheet

Coupling Certifications

Standard Flexible Couplings

ABOVE & BELOW GROUND

FEATURES:

- Connects pipes of same or different materials and sizes
- Leak-proof, root-proof and resistant to many chemicals, ultra violet rays, fungus growth and normal sewer gas

CERTIFICATIONS:

- Conforms to **ASTM D 5926, C 1173** and **CSA B602**

*Verify with local code officials



1000RC / 5000RC Series Couplings

BELOW GROUND

FEATURES:

- High torque clamps spot welded in place
- Designed for resistance to heavy earth loads and shear forces
- Mechanical coupling for drain, waste, vent and sewer pipe

CERTIFICATIONS:

- Gasket conforms to **ASTM D 5926, C 1173** and **CSA B602**



Specialty Couplings **PROFLEX**

ABOVE GROUND

FEATURES:

- Shielded transition coupling
- Creates rigid, long-lasting pipe joints
- Connects cast iron, plastic, steel, copper and tubular pipe

CERTIFICATIONS:

- Gasket conforms to **ASTM C 564**
- Shielded Coupling conforms to **ASTM C 1460** and **CSA B602**



Universal Coupling **HULK**

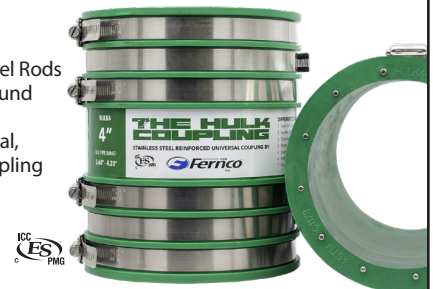
BELOW GROUND

FEATURES:

- Embedded with Stainless Steel Rods
- Protects the pipe against ground movement
- Heavy duty, multi-dimensional, non-shear sewer & drain coupling

CERTIFICATIONS:

- Conforms to **ASTM C 1173** and **CSA B602**



Flexible Chemical Couplings

ABOVE & BELOW GROUND

FEATURES:

- Provide flexible & watertight, highly chemical resistant, connections on drainage system
- Transitions dissimilar chemical piping and sizes
- Chemical resistant drain system, connects chemical waste piping to waste tanks

CERTIFICATIONS:

- Conforms to **ASTM C 1173**



Corrugated Pipe Couplings

BELOW GROUND

FEATURES:

- Connects corrugated polyethylene drainage and irrigation systems to sewer, drain or DWV plastic pipe
- Connect ADS and Hancor corrugated polyethylene to plastic
- Ideal for use in storm and sub-soil drainage systems, farm irrigation systems and residential

CERTIFICATIONS:

- Conforms to **ASTM D 5926**



Expansion Joint Couplings

ABOVE GROUND

FEATURES:

- Residential and commercial applications
- Applicable for drain, waste and vent stacks, and interior rain water conductor systems
- Unique one-piece construction

CERTIFICATIONS:

- Conforms to **CSA B602**



ICON Pushfit Coupling

ABOVE & BELOW GROUND

FEATURES:

- Internal Pushfit Connector - 4" & 6" Sewer Pipe and DWV
- Ideal for the connection of plastic (SDR 35, Sch 40), Cast Iron and Copper
- Can be removed and re-used / No Tools
- Watertight connection on any pipe material

CERTIFICATIONS:

- Conforms to **ASTM C 1173**



Connection Solutions

THE HULK COUPLING



**Strong. Flexible.
Steel Reinforced
Universal Coupling**



Certifications:
Conforms to **ASTM C 1173** and **CSA B602**

HULK Coupling Benefits

- One universal coupling connects most pipe materials
- One coupling per nominal size
- Heavy duty, multi-dimensional, non-shear sewer & drain coupling
- Protects the pipe against ground movement
- Embedded with Stainless Steel Rods for shear resistance

Part Number	Size	Dimensional Range
HULK 4	4"	5.60" - 4.20"
HULK 5	5"	6.70" - 5.30"
HULK 6	6"	8.00" - 6.20"
HULK 8	8"	10.15" - 8.40"
HULK 10	10"	12.75" - 10.50"
HULK 12	12"	15.30 - 12.50"

ICON Pushfit

**Internal Pushfit Connector -
4" & 6" Sewer Pipe and DWV**

ICON Coupling Benefits

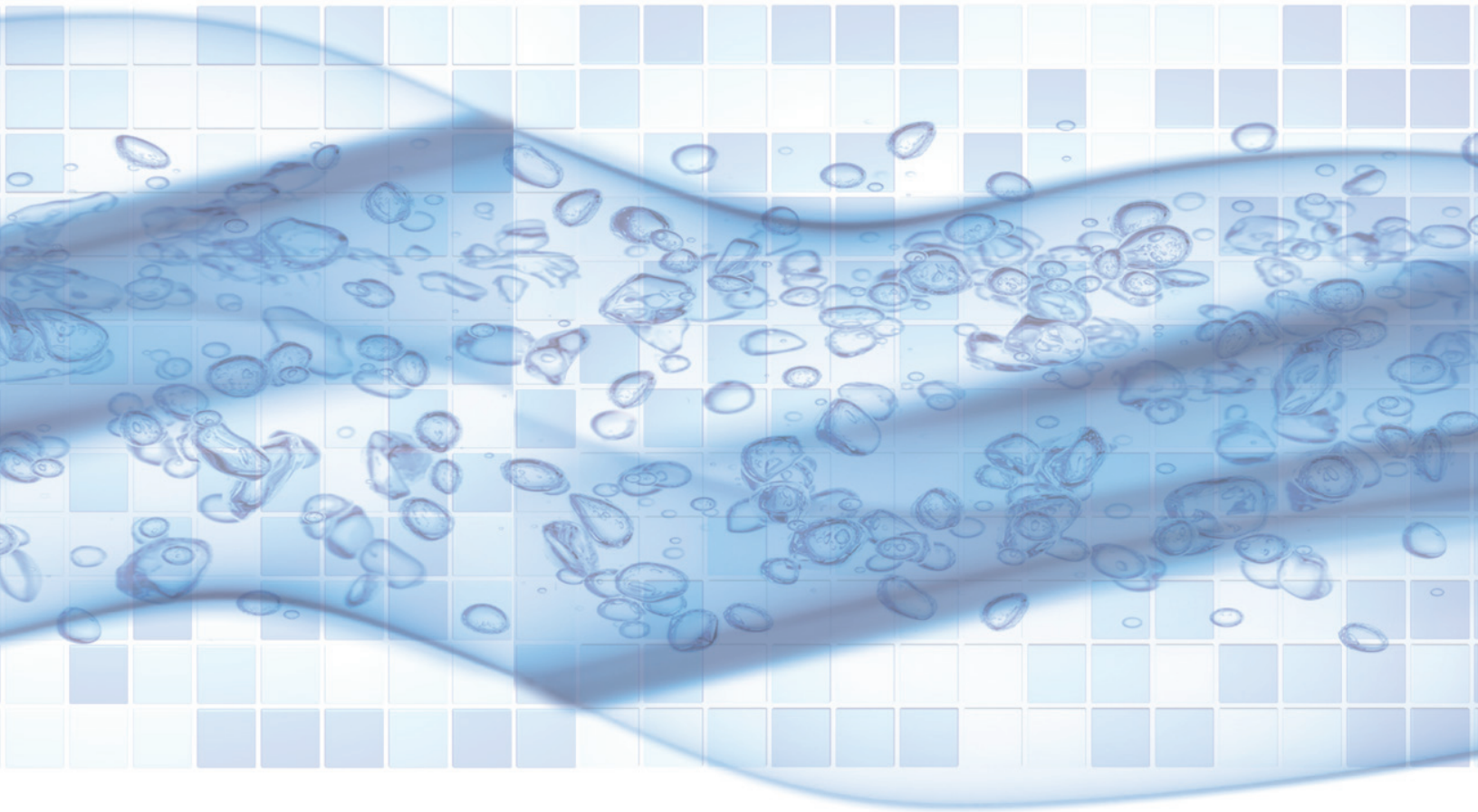
- No tools required
- Use where standard couplings cannot be used
- No need to expose external surface of pipe
- Watertight connection on any pipe material
- Can be removed and re-used



Certifications:
Conforms to **ASTM C 1173**

Product Code	Nominal Dia. (inch)	Description
IC44P	4	Connects two pipes having an I.D. range of: 3.90"-4.06"
IC66P	6	Connects two pipes having an I.D. range of: 5.83"-6.02"

World-Wide Manufacturer Of Flexible Couplings



**PROVEN.
PREFERRED.
PROFESSIONAL.**

(810) 503-9000 www.fernco.com