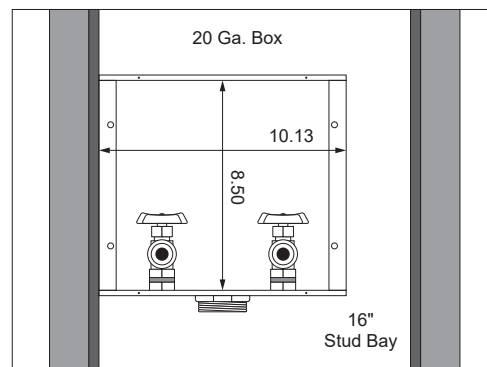
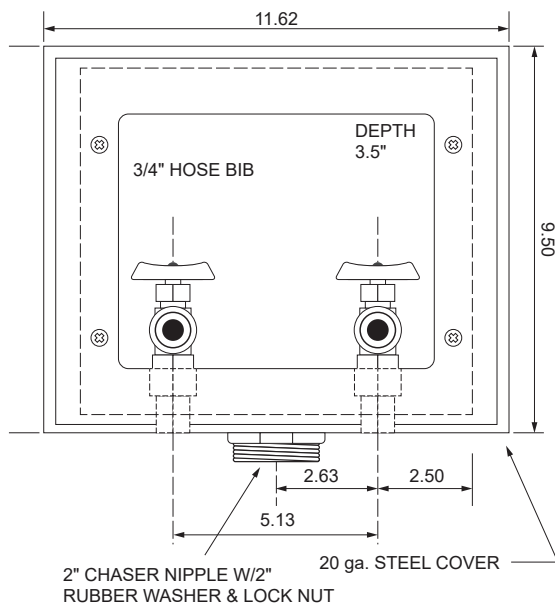


Top-mount 1/2" MIP/Sweat Conx. Valves, 2" Threaded Drain Fitting



Ice Maker Box Installation Instructions for Model BIM875AB

- 1) Remove faceplate that is attached to the washing machine outlet box and save for future installation once sheet rock has been completed.
- 2) Using either nails or screws, mount the box to the stud.
- 3) Box can be mounted on either side of the stud bay.
- 4) Make sure washer box drain is above the water level of the washing machine, approximately 42".
- 5) Connect threaded pipe nipple or male adapter (PVC or ABS) to the drain hole in the box using the provided Drain Kit. Connect appropriate pipe to the drain fitting used. All piping systems should be made to local codes which require a P-trap installation below washer box.
- 6) Connect the water supply piping to the washing machine box valves using appropriate piping for valve connections. Check all local codes.
- 7) Test all piping joints for leaks. Test drain line if required by local code.
- 8) After sheet rock has been installed, screw the faceplate onto the washing machine box.
- 9) Attach washing machine water supply hoses to the 3/4 hose bibb outlets on the front of the appropriate valves and insert the washing machine drain hose into opening of the 2" drain line from inside the washer box. Make sure drain hose is secured so it does not push out of the box due to the water being forced out of the hose from the washing machine.
- 10) Check all local codes for appropriate approvals and requirements.

Part #	Replacement Component Description	Qty
82036	Description	Qty
88235	Domestic Valve - Blue Handle	1
88556	Domestic Valve - Red Handle	1
97028	Brass Valve Connectors	2
97030	1/2" Locknut for Valve	2
97031	7/8" Rubber Washers for Valve	2

Part #	Replacement Component Description	Qty
97032	3/4" & 1/2" Reducing Washers for Valve	2
97036	2" Rubber Gaskets for Drain	1
97038	CN200 2" Chase Nipple for Drain	1
97046	2" Flange Nuts for Drain	1
97091	Faceplate	1
90067	Faceplate Screws	4

Item #	Replacement Component Description	Model #	Case Qty	Packaging
82036	Top-mount 1/2" MIP/Sweat Conx. Valves, 2" Threaded Drain Fitting	BB200TS	6	Standard Pack