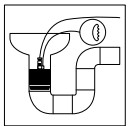




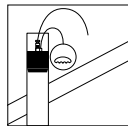
## Single Size Pneumatic Pipe Plugs

### Specifications:

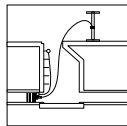
The Single Size Pneumatic Pipe Plug is designed for the testing of pipelines or to temporarily stop the flow. Each size is designed for one specific pipe size. These plugs can be used in a variety of fitting applications and are suitable for most pipe materials. Because they are pneumatic they conform to irregular pipe shapes and seal effectively. Manufactured from a durable natural rubber compound these plugs are flexible yet rugged. Plugs up through 150mm come with a 300mm chain and a ring assembly attached to a molded inflation valve. Larger plugs come with a replaceable tank valve and an eyebolt for tethering. A metal cap/core tool is also included.



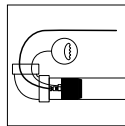
Floor  
Drain



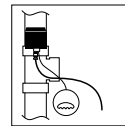
Roof  
Vent



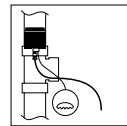
Municipal  
Storm  
Drain



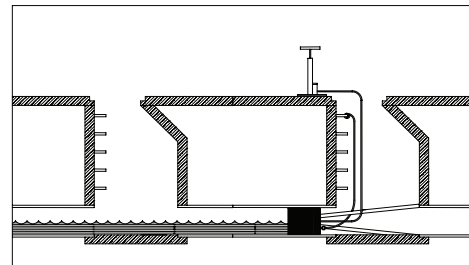
Closet  
Bend



Test  
Tee



Sanitary  
Tee



Nominal Size	Product Code	Plug Use Range		Plug Diameter (inches)	Plug Length (inches)	Overall Plug Length (inches)	Inflation Pressure	Maximum Back Pressure		Shipping Weight
		Minimum Pipe Diameter (inches)	Maximum Pipe Diameter (inches)					Water Head (feet)	Air (psig)	
3/4 - 1 1/4"	83620	0.75	1.25	0.73	3.25	3.50	45	40	17	0.2
1 1/4 - 1 1/2"	83621	1.18	1.75	1.13	3.75	5.25	40	30	17	0.3
2"	83622	1.85	2.25	1.75	1.50	3.00	40	30	13	0.3
3"	83623	2.63	3.25	2.5	3.25	4.75	35	30	13	0.5
4"	83624	3.41	4.25	3.25	4.25	5.75	30	30	13	0.7
5"	83625	4.46	5.25	4.25	5.75	7.25	30	30	13	1.5
6"	83626	5.25	6.25	5.25	7.25	8.75	30	30	13	2.7
8"	83628	7.09	8.25	6.75	9.50	11.50	25	40	17	4.7
10"	83630	8.92	10.25	8.50	11.50	13.50	25	40	17	7.8
12"	83632	11.02	12.25	10.50	13.50	15.75	25	40	17	11.0
15"	83635	13.39	16.25	12.75	18.00	21.50	25	40	17	24.8



500 Distribution Parkway, Collierville, TN 38017 • Phone: 800-888-8312 • Fax: 901-853-5008 • [www.ipscorp.com](http://www.ipscorp.com)