

S/E





SMART ELECTRIC COMPONENTS

Smart Electric offers several types of electrical replacement parts to help mechanics, maintenance personnel, contractors and electricians complete and repair HVAC systems. Relays, Capacitors, Contactors and many other electrical parts are found in many industries. Smart Electric is your one stop solution for all your electrical needs.

table of contents

MINI-SPLIT CAPACITORS	30	PTC OVERLOAD.....	48
OVAL RUN CAPACITORS	31	RELAY & OVERLOAD	48
DUAL SECTION MOTOR OVAL RUN CAPACITOR	32-33	SCG SERIES RELAYS	49
MOTOR ROUND RUN CAPACITORS	34	¾" MOTOR PROTECTOR	49
DUAL SECTION MOTOR ROUND CAPACITORS	35	FOOT MOUNT TRANSFORMER.....	50
START CAPACITORS	36-37	MULTI-MOUNTED END BELL TRANSFORMER.....	51
SUPER STARTER RELAYS.....	38	GENERAL PURPOSE THERMOSTAT	52
CONTACTOR SERIES	40-41	LIMIT THERMOSTAT	52
TIME DELAYS.....	42	COIL KIT FOR ELECTRIC HEAT	52
GENERAL PURPOSE FAN RELAYS	43	DEFROST SWITCHES	53
GENERAL PURPOSE FAN RELAYS HEAVY DUTY	44	SEQUENCERS	54
GENERAL PURPOSE SWITCHING RELAYS.....	45	AIR CONDITIONING WHIPS.....	55
POTENTIAL RELAYS.....	46	SMART DISCONNECTS.....	56-57
EMBRACO-DANFOSS SHORT RELAYS ..	47	SCREW ON WIRE CONNECTORS	58
CURRENT RELAYS.....	47	WINGED WIRE CONNECTORS.....	58
SOLID STATE RELAYS.....	48	NYLON TIES	58
		NYLON WIRE TIES	59



QUALITY CONTROLLED BY AN AMERICAN COMPANY



MINI-SPLIT CAPACITORS

FLAME-RETARDANT PLASTIC CASE COMPOSITION.
SPADE TERMINALS. FILLED WITH EPOXY RESIN.

MAIN APPLICATIONS:

- 50/60Hz AC Motors
- Air Conditioner and Heat Pump Motors, Ventilation Motors, etc.

FEATURES:

- Self-recovery after overheating
- Small sizes fit most mini-splits, ptacs and portable units
- Stable capacitance
- Long life span

TECHNICAL DATA

Certification	UL810
Capacitance Range	1 μ F to 24 μ F
Capacitance Deviation	\pm 5%
Rated Voltage	250VAC, 450VAC
Rated Frequency	50/60 Hz
Operating Temperature	-40 F to 158 F (-40 C to 70 C)

CAPACITORS

PART NO.	MICROFARAD	VOLT 1	VOLT 2
S1x450	1 μ F	250	450
S1.5x450	1.5 μ F	250	450
S2x450	2 μ F	250	450
S2.5x450	2.5 μ F	250	450
S3x450	3 μ F	250	450
S4x450	4 μ F	250	450

PART NO.	MICROFARAD	VOLT 1	VOLT 2
S5x450	5 μ F	250	450
S6x450	6 μ F	250	450
S7x450	7 μ F	250	450
S8x450	8 μ F	250	450
S9x450	9 μ F	250	450

UL 810 c  US
LISTED

OVAL RUN CAPACITORS

FEATURES:

- Available round or oval
- The widest selection of ratings in the industry
- Perfect for general replacements, small dimensions available
- Non-PCB capacitors
- Medium: Polypropylene Film
- Electrode: Metalized Film
- Aluminum case, metal cap (in accordance with UL)
- Filling material: Plant oil (in accordance with UL)
- Expected Life 60,000 Hours
- Rated Voltage: 370 Vac or 440 Vac
- Max permit temperature: 85° C/185° F
- Terminal material, ignition time not to exceed 10 seconds
- UL 810, IEC 60252-1, EIA456-A



OVAL RUN

370V OVAL CAPACITOR

PART NO.	DESCRIPTION
SE337-0	3
SE437-0	4
SE537-0	5
SE637-0	6
SE7537-0	7.5
SE1037-0	10
SE12537-0	12.5
SE1537-0	15
SE17537-0	17.5
SE2037-0	20
SE2537-0	25
SE3037-0	30
SE3537-0	35
SE4037-0	40
SE4537-0	45
SE5037-0	50
SE5537-0	55
SE6037-0	60
SE7037-0	70
SE8037-0	80

440V OVAL CAPACITOR

PART NO.	DESCRIPTION
SE340-0	3
SE440-0	4
SE540-0	5
SE640-0	6
SE7540-0	7.5
SE1040-0	10
SE12540-0	12.5
SE1540-0	15
SE17540-0	17.5
SE2040-0	20
SE2540-0	25
SE3040-0	30
SE3540-0	35
SE4040-0	40
SE4540-0	45
SE5040-0	50
SE5540-0	55
SE6040-0	60
SE7040-0	70
SE8040-0	80

UL 810



DUAL SECTION MOTOR OVAL RUN CAPACITORS



UL 810

FEATURES:

- Available round or oval
- The widest selection of ratings in the industry
- Perfect for general replacements
- Small dimensions available
- Non-PCB capacitors
- Medium: Polypropylene Film
- Electrode: Metalized Film
- Aluminum case, metal cap (in accordance with UL)
- Filling material: Plant oil (in accordance with UL)
- Expected Life 60,000 Hours
- Rated Voltage: 370 Vac or 440 Vac
- Max permit temperature: 85° C/185° F
- Terminal material, ignition time not to exceed 10 seconds
- UL 810, IEC 60252-1, EIA456-A

370V OVAL DUAL CAPACITORS

PART NO.	DESCRIPTION	PART NO.	DESCRIPTION
SE41-0	15/3	SE71-1	35/4
SE561-0	15/4	SE72-0	35/5
SE570-0	15/5	SE49-0	35/7.5
SE58-0	15/10	SE50-0	35/10
SE59-0	17.5/4	SE51-0	40/3
SE60-0	17.5/5	SE52-0	40/4
SE62-0	20/4	SE711-0	40/5
SE631-0	20/5	SE521-0	40/7.5
SE632-0	20/10	SE731-0	40/10
SE641-0	20/15	SE74-0	45/5
SE42-0	25/3	SE53-0	45/7.5
SE651-0	25/4	SE531-0	50/5
SE661-0	25/5	SE54-0	55/5
SE43-0	25/7.5	SE551-0	55/7.5
SE671-0	25/10	SE320-0	55/10
SE44-0	30/3	SE630-0	60/5
SE45-0	30/4	SE562-0	60/7.5
SE69-0	30/5	SE57-0	60/10
SE46-0	30/7.5	SE581-0	65/5
SE47-0	30/10	SE591-0	75/5
SE48-0	35/3	SE807-0	80/7.5

DUAL SECTION MOTOR OVAL RUN CAPACITORS

FEATURES:

- Non-PCB capacitors
- The widest selections of ratings
- Individually boxed
- Medium: Polypropylene Film
- Electrode: Metalized Film
- Aluminum case, metal cap (in accordance with UL)
- Filling material: Plant oil (in accordance with UL)
- Expected Life 60,000 Hours
- Rated Voltage: 370 Vac or 440 Vac
- Max permit temperature: 85° C/185° F
- Terminal material, ignition time not to exceed 10 seconds
- UL 810, IEC 60252-1, EIA456-A



440V OVAL DUAL CAPACITORS



PART NO.	DESCRIPTION	PART NO.	DESCRIPTION
SE70-0	15/4	SE81-0	40/10
SE712-0	20/5	SE82-0	45/5
SE722-0	20/15	SE83-0	45/7.5
SE73-0	25/5	SE97-0	50/5
SE742-0	30/5	SE84-0	55/5
SE75-0	35/3	SE85-0	55/10
SE76-0	35/5	SE105-0	70/10
SE77-0	35/7.5	SE115-0	80/5
SE78-0	35/10	SE119-0	80/7.5
SE79-0	40/5	SE120-0	80/10
SE80-0	40/7.5		

MOTOR RUN CAPACITORS

MOTOR ROUND RUN CAPACITORS



FEATURES:

- Non-PCB capacitors
- The widest selections of ratings
- Individually boxed
- Medium: Polypropylene Film
- Electrode: Metalized Film
- Aluminum case, metal cap (in accordance with UL)
- Filling material: Plant oil (in accordance with UL)
- Expected Life 60,000 Hours
- Rated Voltage: 370 Vac or 440 Vac
- Max permit temperature: 85° C/185° F
- Terminal material, ignition time not to exceed 10 seconds
- UL 810, IEC 60252-1, EIA456-A

UL 810  **LISTED**

370V ROUND CAPACITORS

PART NO.	DESCRIPTION	SMART NO.	DESCRIPTION
SE237	2	SE3037	30
SE337	3	SE3537	35
SE437	4	SE4037	40
SE537	5	SE4537	45
SE637	6	SE5037	50
SE7537	7.5	SE5537	55
SE1037	10	SE6037	60
SE12537	12.5	SE6537	65
SE1537	15	SE7037	70
SE17537	17.5	SE8037	80
SE2037	20	SE8537	85
SE2537	25		

440V ROUND CAPACITORS

PART NO.	DESCRIPTION	SMART #	DESCRIPTION
SE240	2	SE2540	25
SE340	3	SE3040	30
SE440	4	SE3540	35
SE540	5	SE4040	40
SE640	6	SE4540	45
SE7540	7.5	SE5040	50
SE1040	10	SE5540	55
SE12540	12.5	SE6040	60
SE1540	15	SE7040	70
SE17540	17.5	SE7540	75
SE2040	20	SE8040	80

MOTOR RUN CAPACITORS

DUAL SECTION MOTOR ROUND RUN CAPACITORS

FEATURES:

- Non-PCB capacitors
- The widest selections of ratings
- Individually boxed
- Medium: Polypropylene Film
- Electrode: Metalized Film
- Aluminum case, metal cap (in accordance with UL)
- Filling material: Plant oil (in accordance with UL)
- Expected Life 60,000 Hours
- Rated Voltage: 370 Vac or 440 Vac
- Max permit temperature: 85° C/185° F
- Terminal material, ignition time not to exceed 10 seconds
- UL 810, IEC 60252-1, EIA456-A



UL 810  LISTED

370V DUAL ROUND CAPACITOR

PART NO.	DESCRIPTION	PART NO.	DESCRIPTION
SE41	15/3	SE72	35/5
SE561	15/4	SE49	35/7.5
SE570	15/5	SE50	35/10
SE58	15/10	SE51	40/3
SE59	17.5/4	SE52	40/4
SE60	17.5/5	SE711	40/5
SE62	20/4	SE521	40/7.5
SE631	20/5	SE731	40/10
SE632	20/10	SE74	45/5
SE641	20/15	SE53	45/7.5
SE42	25/3	SE532	45/10
SE651	25/4	SE531	50/5
SE661	25/5	SE514	50/10
SE43	25/7.5	SE54	55/5
SE671	25/10	SE551	55/7.5
SE44	30/3	SE552	55/10
SE45	30/4	SE553	60/5
SE669	30/5	SE562	60/7.5
SE46	30/7.5	SE57	60/10
SE47	30/10	SE598	75/5
SE473	30/15	SE805	80/5
SE48	35/3	SE807	80/7.5
SE71	35/4		

440V DUAL ROUND CAPACITOR

PART NO.	DESCRIPTION	PART NO.	DESCRIPTION
SE86	25/5	SE97	50/5
SE87	25/7.5	SE98	50/7.5
SE88	30/5	SE99	55/5
SE89	30/7.5	SE100	55/7.5
SE891	35/4	SE101	60/5
SE90	35/5	SE102	60/7.5
SE91	35/7.5	SE103	60/10
SE92	40/4	SE5700	65/10
SE93	40/5	SE8055	80/5
SE94	40/7.5	SE115	80/5
SE95	45/5	SE119	80/7.5
SE96	45/7.5	SE120	80/10
SE892	45/10		



START CAPACITORS 110V

ELECTROLYTIC CAPACITORS FOR MOTOR STARTING APPLICATIONS

FEATURES:

- Bakelite case
- Non-polarized aluminum electrolytic
- Quick connect terminals
- Capacitance Range: 21 to 1280 μF
- Voltage Range: 110 to 330 VAC
- Operating Temperature: -40°C to $+65^{\circ}\text{C}$
- Operating Frequency: 50 to 60 Hz
- Power Factor: 10% max. (12% 30 μF)
- Compact Size for Easy mounting
- Meets EIA RS-463 Type 2



PART NO.	TYPE	MFD	VOLTAGE 110 V
72-86-110V	Plastic/Rnd.	72-86	110VAC
88-108-110V	Plastic/Rnd.	88-108	110VAC
108-130-110V	Plastic/Rnd.	108-130	110VAC
124-149-110V	Plastic/Rnd.	124-149	110VAC
130-156-110V	Plastic/Rnd.	130-156	110VAC
145-175-110V	Plastic/Rnd.	145-175	110VAC
161-193-110V	Plastic/Rnd.	161-193	110VAC
189-227-110V	Plastic/Rnd.	189-227	110VAC
216-259-110V	Plastic/Rnd.	216-259	110VAC
220-240-110V	Plastic/Rnd.	220-240	110VAC
233-280-110V	Plastic/Rnd.	233-280	110VAC
243-292-110V	Plastic/Rnd.	243-292	110VAC
270-324-110V	Plastic/Rnd.	270-324	110VAC
300-340-110V	Plastic/Rnd.	300-340	110VAC

PART NO.	TYPE	MFD	VOLTAGE 110 V
324-389-110V	Plastic/Rnd.	324-389	110VAC
340-408-110V	Plastic/Rnd.	340-408	110VAC
378-490-110V	Plastic/Rnd.	378-490	110VAC
400-480-110V	Plastic/Rnd.	400-480	110VAC
430-516-110V	Plastic/Rnd.	430-516	110VAC
460-552-110V	Plastic/Rnd.	460-552	110VAC
540-648-110V	Plastic/Rnd.	540-648	110VAC
590-708-110V	Plastic/Rnd.	590-708	110VAC
708-850-110V	Plastic/Rnd.	708-850	110VAC
815-970-110V	Plastic/Rnd.	815-970	110VAC
829-995-110V	Plastic/Rnd.	829-995	110VAC
850-1020-110V	Plastic/Rnd.	850-1020	110VAC
1000-1200-110V	Plastic/Rnd.	1000-1200	110VAC

START CAPACITORS 220V AND 330V

ELECTROLYTIC CAPACITORS FOR MOTOR
STARTING APPLICATIONS

FEATURES:

- Bakelite case
- Non-polarized aluminum electrolytic
- Quick connect terminals
- Capacitance Range: 21 to 1280 μ F
- Voltage Range: 110 to 330 VAC
- Operating Temperature: -40°C to $+65^{\circ}\text{C}$
- Operating Frequency: 50 to 60 Hz
- Power Factor: 10% max. (12% 30 μ F)
- Compact Size for Easy mounting
- Meets EIA RS-463 Type 2



PART NO.	TYPE	MFD	VOLTAGE 220V
21-25-220V	Plastic/Rnd.	21-25	220VAC
56-72-220V	Plastic/Rnd.	56-72	220VAC
72-86-220V	Plastic/Rnd.	72-86	220VAC
88-108-220V	Plastic/Rnd.	88-108	220VAC
108-130-220	Plastic/Rnd.	108-130	220VAC
124-149-220V	Plastic/Rnd.	124-149	220VAC
130-156-220V	Plastic/Rnd.	130-156	220VAC
145-175-220V	Plastic/Rnd.	145-175	220VAC
189-227-220V	Plastic/Rnd.	189-227	220VAC
216-259-220V	Plastic/Rnd.	216-259	220VAC
233-280-220V	Plastic/Rnd.	233-280A	220VAC
243-292-220V	Plastic/Rnd.	243-292	220VAC
270-324-220V	Plastic/Rnd.	270-324	220VAC

PART NO.	TYPE	MFD	VOLTAGE 330V
21-25-330V	Plastic/Rnd.	21-25B	330VAC
88-108-330V	Plastic/Rnd.	88-108B	330VAC
108-130-330V	Plastic/Rnd.	108-130B	330VAC
124-149-330V	Plastic/Rnd.	124-149B	330VAC
130-156-330V	Plastic/Rnd.	130-156B	330VAC
145-175-330V	Plastic/Rnd.	145-175B	330VAC
189-227-330V	Plastic/Rnd.	189-227B	330VAC
216-259-330V	Plastic/Rnd.	216-259B	330VAC
270-324-330V	Plastic/Rnd.	270-324B	330VAC

SMART ELECTRIC SUPER STARTER (Hard Start Kit): Reduces the amount of time for compressor to start. Protects compressor from potentially damaging start-up current, and protects internal components.



STARTING
TORQUE UP TO
300%

SES5 SUPER STARTER

INCREASES STARTING TORQUE UP TO 300

FEATURES:

- Contains relay and start capacitor for extra starting torque
- Installs in seconds across run capacitor terminal

APPLICATIONS:

- For all PSC A/C units from 4,000 thru 120,000 BTU's (1/2 thru 10 HP)
- Residential and commercial PSC A/C units and heat pumps
- Can be used on 120 thru 288 VAC units
- For low voltage and hard starting compressors
- Room A/C units



STARTING
TORQUE UP TO
500%

SES6 SUPER STARTER

INCREASES STARTING TORQUE UP TO 500%

FEATURES:

- Contains specially designed relay and large start capacitor for severe hard start problems
- Installs in seconds across run capacitor terminals

APPLICATIONS:

- For all PSC A/C units from 4,000 thru 120,000 BTU's (1/2 thru 10 HP)
- Can be used on 120 thru 288 starting
- Room A/C units
- Residential and commercial PSC A/C units and heat pumps
- For severe low voltage or hard starting compressors

SEI® US

PART NO.	VOLTAGE	INCREASES	REPLACES	
		TORQUE	MARS	SUPCO
SES5	115-230	300%	35701	SPP5
SES6	115-230	500%	35702	SPP6

SEC N'1 START RELAY

FEATURES:

- Installs quickly and easily by simply pushing on 3 female pin terminals
- Completely pre-wired

APPLICATIONS:

- All 3 electrical components relay, overload and start capacitor, on all capillary systems



HIGH STARTING TORQUE



PART NO.	HORSEPOWER	VOLTAGE
SEC810	1/12 THRU 1/5	115
SEC410	1/12 THRU 1/3	115

SMART ELECTRIC START RELAY (Refrigeration Hard Starts): principle of Hard Start for A/C systems, this component provides high starting torque to prevent compressor damage due to start-up current.

SMART ELECTRIC CONTACTORS: These compact universal designs are commonly used in HVAC&R systems. Available in 1, 2 and 3 pole configurations, from 20A to 90A, offering a wide range of replacement options for Air Conditioning and Refrigeration applications.

FIG. 1



FIG. 2



CONTACTOR SERIES

FEATURES:

- 1, 2 Poles
- 24V, 120V, 240V Coil Voltage
- 20 to 90 Full Load Amps
- 25 to 100 Resistive Amps
- Lug Terminals
- Protective Cover

**DESIGNED
FOR A/C, REFRIGERATION
& HEATING EQUIPMENT**

SINGLE POLE CONTACTORS

PART NO.	FULL LOAD AMPS	RESISTIVE AMPS	LOCKED ROTOR AMPS@240	FIG	COIL VOLTAGE
SE6968M	40	50	240	1	24
SE2727M	30	40	180	1	240
SE2728M	30	40	180	1	120
SE2729M	30	40	180	1	24

2 POLE CONTACTORS

SE2701M	20	25	120	2	120
SE2702M	20	25	120	2	240
SE2725M	25	30	150	2	120
SE2726M	25	30	150	2	24
SE2730M	30	40	180	2	24
SE2735M	30	40	180	2	120
SE2736M	30	40	180	2	240
SE2740M	40	50	240	2	24
SE2741M	40	50	240	2	120
SE2742M	40	50	240	2	240

CONTACTOR SERIES

FEATURES:

- 3 Poles
- 24V, 120V, 240V Coil Voltage
- 20 to 90 Full Load Amps
- 25 to 100 Resistive Amps
- Lug Terminals
- Protective Cover



FIG. 3

DESIGNED FOR A/C, REFRIGERATION & HEATING EQUIPMENT

3 POLE CONTACTORS



PART NO.	FULL LOAD AMPS	RESISTIVE AMPS	LOCKED ROTOR AMPS@240	FIG	COIL VOLTAGE
SE3701M	25	30	150	3	24
SE3702M	25	30	150	3	120
SE3703M	25	30	150	3	240
SE3704M	30	40	180	3	24
SE3705M	30	40	180	3	120
SE3706M	30	40	180	3	240
SE3707M	40	50	240	3	24
SE3708M	40	50	240	3	120
SE3709M	40	50	240	3	240
SE3710M	50	60	24	3	24
SE3711M	50	60	120	3	120
SE3712M	50	60	240	3	240
SE3713M	60	70	240	3	240

SAM8



The logo for RU US, consisting of the letters 'RU' in a stylized font with a registered trademark symbol, followed by 'US'.

DELAY ON MAKE TIMER

FEATURES:

- Delay on Make timer
- 18-240 VAC/VDC, 2 Wire compressor
- Staging startup delay timer
- Knob-adjustable from .03-10 minutes
- Works with anticipator thermostats

SPECIFICATIONS:

- Line Voltage: 18-240 VAC/VDC
- Line frequency: 50/60 Hz
- OUTPUT
Output Ratings: max: 1.5 amps
min: 40 mA
Inrush: 15 amps
- Time Delay: .03-10 mins. adjustable

SAB8



The logo for RU US, consisting of the letters 'RU' in a stylized font with a registered trademark symbol, followed by 'US'.

DELAY ON BREAK TIMER

FEATURES:

- Delay on Break timer
- 18-240 VAC/VDC, 2 Wire, Anti Short Cycle
- Lockout timer
- Knob-adjustable from .03-10 minutes
- Works with anticipator thermostats

SPECIFICATIONS:

- Line Voltage: 18-240 VAC/VDC
- Line frequency: 50/60 Hz
- OUTPUT
Output Ratings: max: 1.5 amps
min: 40 mA
Inrush: 15 amps
- Time Delay: .03-10 mins. adjustable

SMART ELECTRIC FAN RELAYS: Single pole single throw (SPST) and single pole double throw (SPDT) fan relays are ideal for switching solenoids, fan motors and other applications. These general purpose fan relays have universal mounting brackets.

Available coil voltages are 24v, 110/120v, 208-240v.

GENERAL PURPOSE FAN RELAYS - SPST AND SPDT FAN RELAYS

REPLACE THE WR/ESSEX/RBM TYPE 84
(90-290 THRU 90-295) QUICK CONNECT.

FEATURES:

- Universal mounting bracket
- Replace 90-290 thru 90-295
- Individually boxed
- Dimensions: 2.38 x 1.63 x 1.50 in.
- UL recognized component
- SPST and SPDT configurations
- 1/4" Quick-Connect Terminals
- 24V, 110/120V, 208/240V Coil Voltage



SPST NO.	SPDT NO.	COIL VOLTAGE
SE90290	SE90293	24
SE90291	SE90294	110/120
SE90292	SE90295	208/240

CONTACT RATING

FULL LOAD	LOCKED ROTOR	RESISTIVE	VOLTAGE
12	60	18	120
8	48	18	240
7	42	18	277

CROSS REFERENCE

SMART ELECTRIC NO.	WR/RBM NO.	SMART ELECTRIC NO.	WR/RBM NO.
SE90290	90-290Q	SE90293	90-293Q
SE90291	90-291Q	SE90294	90-294Q
SE90292	90-292Q	SE90295	90-295Q



GENERAL PURPOSE FAN RELAYS HEAVY DUTY

USED ON HEATING AND AIR CONDITIONING EQUIPMENT TO PROVIDE SWITCHING OF HEAVIER LOADS WITH A COMPACT SIZE RELAY.

FEATURES:

- Universal mounting bracket
- Replaces WR/Essex/RBM type 184
- 1/4" Quick-Connect Terminals
- Individually boxed
- UL recognized component

**PROVIDES SWITCHING
OF HEAVIER LOADS
- COMPACT SIZE -**



HEAVY DUTY FAN RELAYS

SPST NO.	SPDT NO.	SPNO-SPNC NO.	COIL VOLTAGE
SE90360	SE90370	SE90380	24
SE90362	SE90372	SE90382	110/120
SE90364	SE90374	SE90384	208/240

CONTACT RATING

FULL LOAD	LOCKED ROTOR	RESISTIVE	VOLTAGE
12	60	18	120
8	48	18	240
7	42	18	277

CROSS REFERENCE

SMART ELECTRIC NO.	WR/RBM NO.	SMART ELECTRIC NO.	WR/RBM NO.
SE90360	90-360	SE90374	90-374
SE90362	90-362	SE90380	90-380
SE90364	90-364	SE90382	90-382
SE90370	90-370	SE90384	90-384
SE90372	90-372	-	-

SMART ELECTRIC GENERAL PURPOSE SWITCHING RELAYS:

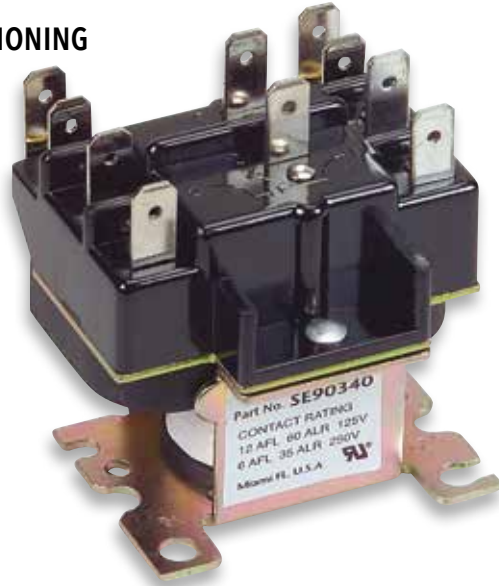
Switching relays receive and control electrical signals. They are mainly used in the following applications: Air Conditioning, Refrigeration, Heating Appliances, Fan Controls and Vending Machines.

GENERAL PURPOSE SWITCHING RELAYS

FEATURES:

- Open coil to ensure cooler operation
- Magnet is laminated for higher efficiency
- Quick-connect coil terminals
- Base support designed for easy replacement
- Terminal numbers and circuit diagrams are molded on the case for easy installation and servicing
- Individually boxed

2-POLE AIR CONDITIONING RELAYS



SWITCHING RELAYS



PART NO.	COIL VOLTAGE	TERMINALS 1-2-3	TERMINALS 4-5-6
SE90340	24	Power	Power
SE90341	110/120	Power	Power
SE90342	208/240	Power	Power

CONTACT RATING

	POWER		PILOT	
	120V	208/240V	120	208/240V
Full Load Amps	12	6	-	-
Resisting Amps*	15	15	3	3
Locked Rotor Amps	60	35	-	-
Horsepower	3/4	3/4	1/10	1/10

*277 VAC

CROSS REFERENCE

SMART ELECTRIC NO.	WR/RBM NO.	HONEYWELL NO.
SE90340	90-340	R8222D1014
SE90341	90-341	R4222D1013
SE90342	90-342	R4222D1021

COIL DATA: 24-240 VAC @ 50/60 HZ; 21.5 VA MAX. INRUSH; 9.5 VA MAX. SEALED

SMART ELECTRIC POTENTIAL RELAYS: Provides additional starting torque to mechanical components such as motors or compressors. Potential relays protect start winding from overloading during a locked rotor condition by removing it from the circuit. Mainly used on residential and commercial air conditioning units, heat pumps, room air conditioners and refrigeration compressors.



POTENTIAL RELAYS

UNIVERSAL REPLACEMENT

FEATURES:

- Universal Replacement: replaces thousands of OEM potential relays
- Totally enclosed
- Universal break-off bracket
- 50/60 Hz
- Used with capacitor type motors
- Individually boxed



PART NO.	CONTINUOUS COIL VOLTAGE	PICK-UP		DROP-OUT MAX.
		MIN.	MAX.	
SE63	170	139	153	55
SE64	395	260	275	120
SE65	332	168	182	90
SE66	395	215	225	120
SE67	420	295	315	125
SE68	502	325	345	135
SE69	332	180	193	105

CROSS REFERENCE

SMART ELECTRIC NO.	JARD MODEL	MARS	STEVECO	3ARR3 G.E. GROUPS
SE63	JPR-63	19002	90-63	2J,2,2L,2M,5,7J,7K,7L,7M,7N,8L,8M,8N
SE64	JPR-64	19003	90-64	3A,3B,3AV,3AU,4A,4B,6A,6B,6AV,10A,10B,10AU,10AV
SE65	JPR-65	19004	90-65	3P,3R,3AP,5P,5R,5S,5T,22S
SE66	JPR-66	19005	90-66	3U,3V,3AT,6U,6V,6W
SE67	JPR-67	19006	90-67	3C,3D,3AA,4C,4D,4B,6C,6D,6AA,10C,10D,26A,26B,26C,26D
SE68	JPR-68	19007	90-68	3E,3F,3AB,3AC,4E,4F,4G,6E,6F,6G,10H,10AB,10AC,26E,26F,26G,26H,27E,27F,27G
SE69	JPR-69	19008	90-26	3S,3T,10S,10T,25S,25T,10AS

EMBRACO TYPE SHORT STARTER RELAY - 110V

FEATURES:

- Available from 1/8 - 1/2HP
- Sealed
- Voltage Relay
- 110/220V - 50/60HZ



PART NO.	DESCRIPTION
SREM 1/8	1/8HP
SREM 1/6	1/6HP
SREM 1/5	1/5HP

PART NO.	DESCRIPTION
SREM 1/4	1/4HP
SREM 1/3	1/3HP
SREM 1/2	1/2HP

DANFOSS TYPE SHORT STARTER RELAY - 110V

FEATURES:

- Available from 1/8 - 1/2HP
- Sealed
- Voltage Relay
- 110/220V - 50/60HZ



PART NO.	DESCRIPTION
SRDM 1/8	1/8HP
SRDM 1/6	1/6HP
SRDM 1/5	1/5HP

PART NO.	DESCRIPTION
SRDM 1/4	1/4HP
SRDM 1/3	1/3HP
SRDM 1/2	1/2HP

SMART ELECTRIC RELAYS: Replaces almost any current relay found in refrigerators, freezers, water cooler, pumps and vending machines.



CURRENT RELAYS

FEATURES:

- Covers replacement needs 1/8 HP 115V to 2 HP 230V
- Replace plug-on, bracket type, split-phase, and capacitor-start current relays

PART NO.	MAX. PICK-UP	MIN. PICK-UP	SIZE	VOLTAGE
SE1/8R	5.2	4.4	1/8 HP	115
SE1/6R	6.8	5.8	1/6 HP	115
SE1/5R	8.3	7.1	1/5 HP	115
SE1/4R	10.5	8.7	1/4 HP	115
SE1/3R	11.8	9.8	1/3 HP	115
SE1/2R	13.8	11.5	1/2 HP	115
SE3/4R	25.4	20.3	3/4 HP	115
SE1R	35	31	1 HP	230
SE1 1/2R	40	35	1 1/2 HP	230
SE2R	50	42	2 HP	230

SOLID STATE RELAYS - 110V

FEATURES

- 4 pin relay
- 5-20A
- 1/8 - 1/2HP
- For refrigeration compressors



PART NO.	DESCRIPTION
SEE 1/4-4	1/8HP
SEE 1/6-4	1/6HP
SEE 1/5-4	1/5HP
SEE 1/4-4	1/4HP
SEE 1/3-4	1/3HP
SEE 1/2-4	1/2HP

PTC OVERLOAD PROTECTOR - 110V

FEATURES

- 1/8 - 1/2HP
- Water proof and heat resistant
- High precision
- Steady performance



PART NO.	DESCRIPTION
SPTC1/8	1/8HP
SPTC1/6	1/6HP
SPTC1/5	1/5HP
SPTC1/4	1/4HP
SPTC1/3	1/3HP
SPTC1/2	1/2HP

RELAY AND OVERLOAD COMBINATION

FEATURES:

- cULs
- SC Series replaces all
- Relay and Overload combination from 1/12 HP thru 1/3 HP



SMART ELECTRIC NO.	HP	VOLTS	REPLACES
SR013	1/4, 1/3	115	Supco R041 MARS 21310 GEM IC13
SR015	1/2, 1/5	115	Supco R081 MARS 21305 GEM IC15

SCG SERIES RELAYS

APPLICATIONS: ONE SIZE FOR ALL COMPRESSORS FROM 1/12 HP THRU 1/2 HP

FEATURES:

- Can be used with or without a start capacitor
- Easy to install. Can be mounted on the fence of the compressor with quick "snap-on-bracket" or installed in any convenient location by using screws through the mounting holes



PART NO.	HORSEPOWER	VOLTAGE
SCG1	1/12 THRU 1/2	115
SCG2	1/12 THRU 1/2	230



3/4" MOTOR PROTECTORS

FEATURES:

- Each overload has six-inch leads and two wire nuts for simple installation
- Used in refrigeration, room air conditioners, heating, appliances and electric motors
- UL recognized component



PART NO.	SIZE	VOLTAGE
SE01/8	1/8 HP	115
SE01/6	1/6 HP	115
SE01/5	1/5 HP	115
SE01/4	1/4 HP	115
SE01/3	1/3 HP	115
SE01/2	1/2 HP	115
SE03/4	3/4 HP	115
SE01	1 HP	220
SE01 1/2	1 1/2 HP	220
SE02	2 HP	220



TRANSFORMERS FOOT MOUNT

FEATURES:

- Primary color coded list
- UL recognized component

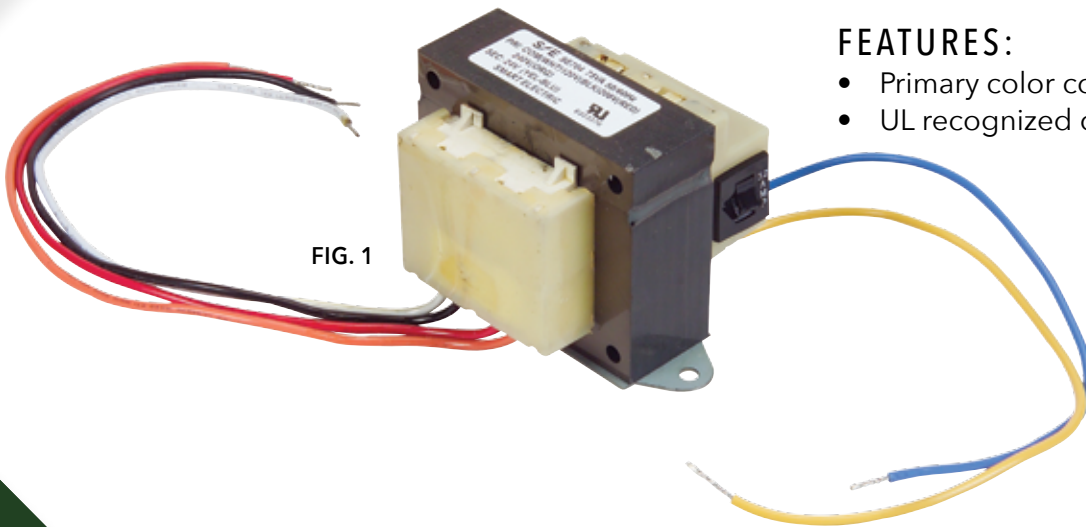


FIG. 1

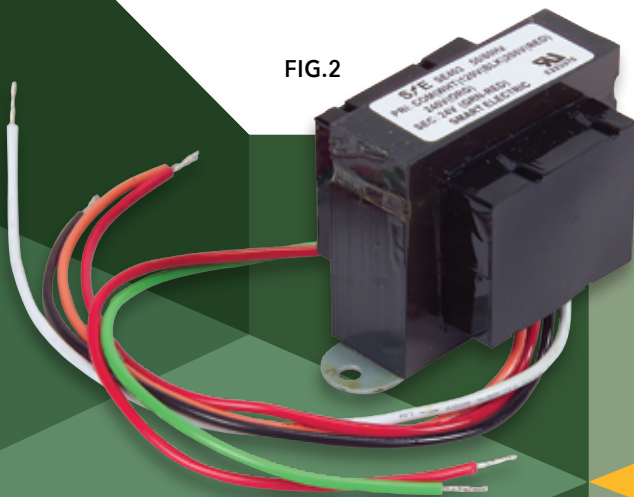


FIG. 2

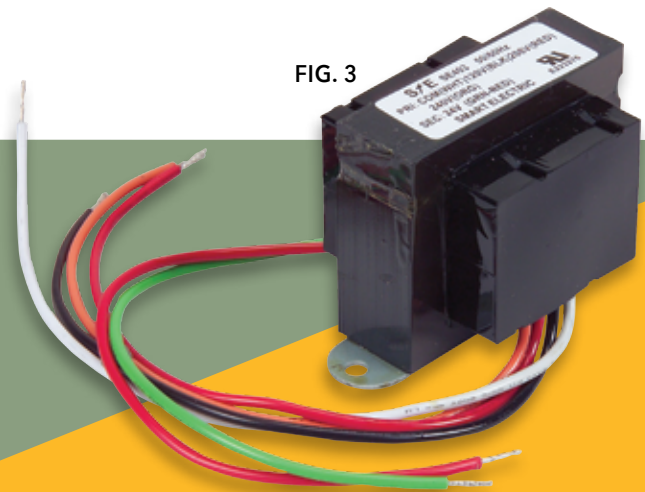


FIG. 3

PART NO.	PRIMARY VOLTAGE	VA RATING	SECONDARY VOLTAGE	FIG.
SE200	120V	20	24	Fig. 1
SE403	120/208/240V	40	24	Fig. 1
SE503	120/208/240V	50	24	Fig. 1
SE602	208/240V	60	24	Fig. 3
SE704	120/208/240V	75	24	Fig. 2
SE751*	120/208/240/480V	75	24	Fig. 2
SE754	480V	75	24	Fig. 3
SE1000	120/208/240/480V	100	24	Fig. 2

* FUSE PROTECTION

TRANSFORMERS MULTI-MOUNTED END BELL

FEATURES:

- Optional 3-way mounting
- 4 x 4 plates
- Closed construction

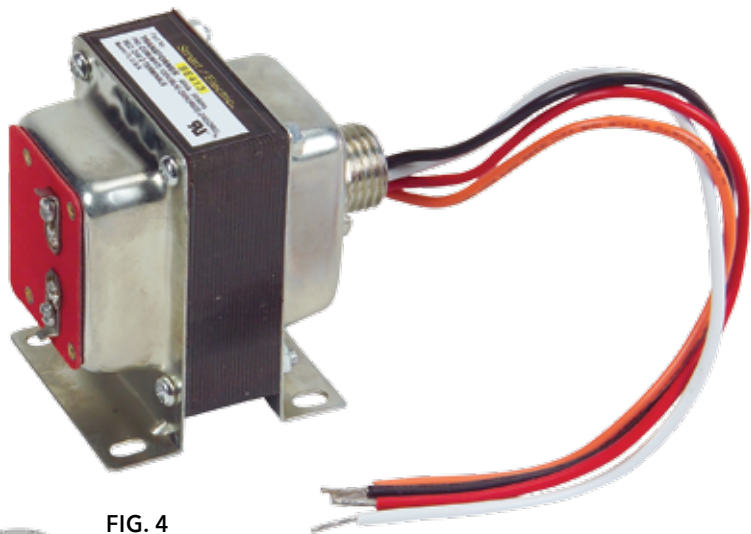


FIG. 4



PART NO.	PRIMARY VOLTAGE	VA RATING	SECONDARY VOLTAGE	FIG.
SE413	120/208/240V	40	24	Fig. 4
SE513	120/208/240V	50	24	Fig. 4
SE480	120/208/240V	48	24	Fig. 4

GENERAL PURPOSE THERMOSTAT

FEATURES:

- Open and rise
- Fan and limit applications



PART NO.	DESCRIPTION
SD135	135 - 15F
SD140	140 - 20F
SD145	145 - 20F
SD190	190 - 20F
SD240	240 - 40F



SD135

LIMIT THERMOSTAT

FEATURES:

- SPST
- Flush mount
- 1/4" quick disconnect terminals are provided
- Open on Rise
- Used in most laundry dryers



SLT140



PART NO.	DESCRIPTION
SLT140	140 - 40F
SLT160	160 - 40F
SLT180	180 - 40F
SLT250	250 - 40F

COIL KIT FOR ELECTRIC HEAT



FEATURES:

- Used in duct heaters
- Electric furnaces
- Air curtains
- Strip heaters

PART NO.	DESCRIPTION	FIG.
SRC601	5Kw @ 240V Fused Links & Hardware	1
SCT291	Open Temp. 291°F	2
SCT306	Open Temp. 306°F	2
SCT333	Open Temp. 333°F	2

SET SERIES

FEATURES:

- Defrost termination switches
- Auto reset

PART NO.	DESCRIPTION	REPLACES MARS
SET45	45 Degrees	33008
SET50	50 Degrees	33009
SET55	55 Degrees	33010
SET60	60 Degrees	33011
SET70	70 Degrees	33012



SET708



FEATURES:

- 120/240 VAC
- 75°F -40°F, 2 wire heater limit
- SPST
- Resistive Amps : 25
- Surface Mount
- Replaces: Bohn®, Larkin®, Chandler®
- Climate Control® 5708L & 4752C

SET9002



FEATURES:

- 120/240 VAC
- 55°F - 35°F, 3 wire defrost control
- SPDT
- Resistive Amps : 25
- Tube Mount
- Replaces: Russell® 103079002

SET709



FEATURES:

- 120/240 VAC
- 55°F - 35°F, 3 wire fan & defrost terminator
- SPDT
- Resistive Amps : 25
- Surface Mount
- Replaces: Bohn®, Larkin®, Chandler®
- Climate Control® 5709L & 4751C

SET9005



FEATURES:

- 120/240 VAC
- 45°F - 30°F, 3 wire defrost control
- SPDT
- Resistive Amps : 25
- Surface Mount
- Replaces: Russell® 103079005

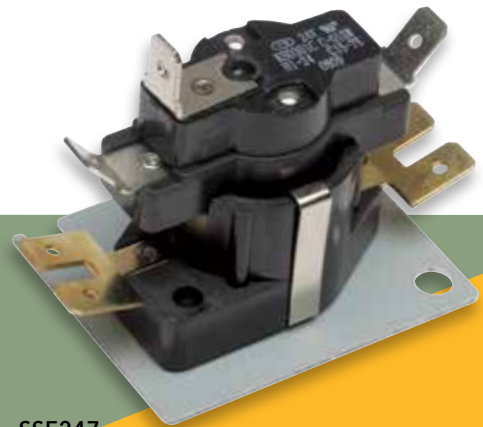
SMART ELECTRIC SEQUENCERS:

These components are designed to delay motor rotation time either at start-up or after cut-off, allowing to take advantage of the cooling or heating state in the system. Classified as SPST or DPST, they are widely used in air conditioners and heat pump applications.

SSE34-4



SSE244B



SSE247

SEQUENCERS

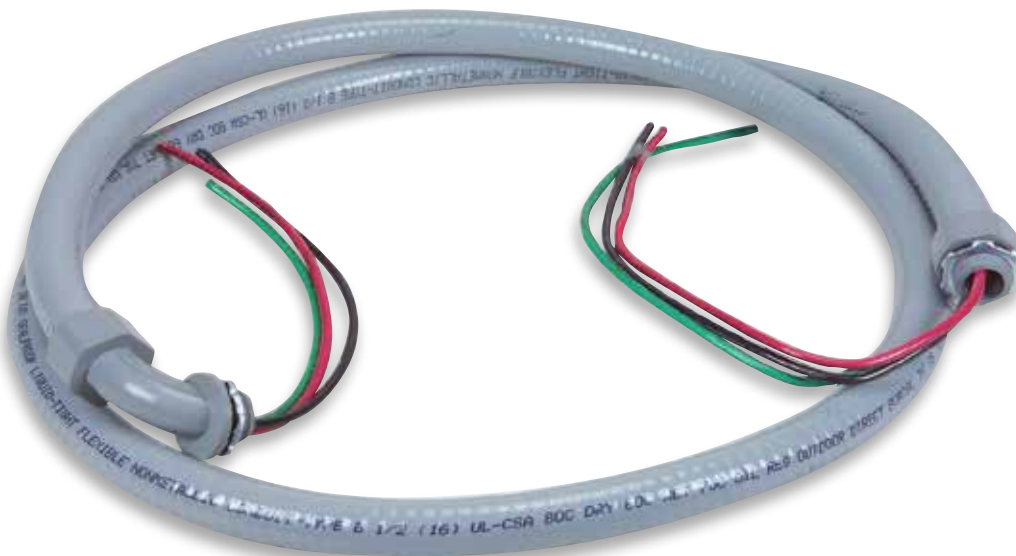
FEATURES:

- 24V c
- Full load rated auxiliary contacts
- ON and OFF delay
- Individually packed

PART NO.	SWITCH	ON	OFF
SSE232	SPST/DPST N.O.	1-24	45-75
SSE233	DPST N.O.	1-24	45-75
SSE241B	SPST N.O.	1-24	45-75
SSE244B	DPST N.O.	1-24	45-75
SSE245	DPST N.O.	30-75	1-40
SSE246	DPST N.O.	1-60	1-45
SSE247	SPDT N.O.	1-24	15-75
SSEA34	SPST N.O.	1-20	40-110
SSE34-2	SPST N.O.	30-90	1-30
SSE34-3	DPST N.O.	1-20	40-110
SSE34-4	DPST N.O.	30-90	1-30
SSE34-5	DPST/SPST N.O.	1-110	1-110
SSE34-6	DPST N.O.	1-110	1-110

AIR CONDITIONING WHIPS

LIQUID-TIGHT CONDUIT, ONE 90° FITTING AND ONE STRAIGHT FITTING



PART NO.	SIZE	LENGTH	GAUGE
SWP 1/2X4	1/2"	4'	10
SWP 1/2X6	1/2"	6'	10
SWP 3/4X4	3/4"	4'	10
SWP 3/4X6	3/4"	6'	10

PVC FITTINGS NON-METALLIC

PART NO.	DESCRIPTION	PACK QTY
SFF 1/2-S	1/2" Straight Connector	25
SFF 1/2-90	1/2" 90° Connector	10
SFF 3/4-S	3/4" Straight Connector	25
SFF 3/4-90	3/4" 90° Connector	10



SDB30F



SMART ELECTRIC DISCONNECTS

FEATURES FOR SDB30F

- 30 Amp. fusible
- For use with aluminum or copper conductors
- Easy On easy OFF disconnect pullout
- Knockouts provided on the back, bottom and side for all applications
- Lift-up cover with lockable latch
- Powder painting finish on steel construction
- NEMA 3R rainproof enclosure for outdoor use
- UL listed
- Individually packed
- 7 1/2" H x 5 1/4" W x 3 3/8" D



SDB60F

FEATURES FOR SDB60F

- 60 Amp. fusible
- For use with copper conductors
- Easy On easy OFF disconnect pullout
- Knockouts provided on the bottom and side
- Lift-up cover with lockable latch
- Powder painting finish on steel construction
- NEMA 3R rainproof enclosure for outdoor use
- UL listed
- Individually packed
- 7 1/2" H x 5 1/4" W x 3 3/8" D

SMART ELECTRIC DISCONNECTS

FEATURES FOR SDB60NF

- 60 Amp. Non-fusible
- For use with aluminum or copper conductors
- Easy On easy OFF disconnect pullout
- Knockouts provided on the back, bottom and side for all applications
- Lift-up cover with lockable latch
- Powder painting finish on steel construction
- NEMA 3R rainproof enclosure for outdoor use
- UL listed
- Individually packed
- 7 1/2" H x 5 1/4" W x 2 3/4" D



SDB60NF



PART NO.	AMPS
SDB30F	30
SDB60F	60
SDB60NF	60



SCREW ON WIRE CONNECTORS

FEATURES:

- Color coded
- High-dielectric thermoplastic shell
- Individually boxed



PART NO.	DESCRIPTION	STANDARD PACK
S-001	71b #22 To #16 Awg-300v Max Gray Color	100
S-002	72b #22 To #16 Awg-300v Max Blue Color	100
S-003	73b #22 To #14 Awg-600v Max Orange Color	100
S-004	74b #18 To 10 Awg-600v Max Yellow Color	100
S-005	76b #18 To #10 Awg-600v Max Red Color	100



WINGED WIRE CONNECTORS

FEATURES:

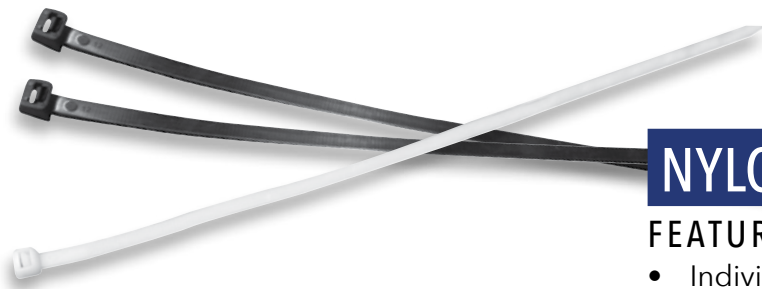
- Great twisting leverage
- Color coded

PART NO.	DESCRIPTION	STANDARD PACK
S-000	78b #14 To #8 Awg-600v Max Gray Color	50
S-006	84 #22 To #10 Awg-600v Max Yellow Color	100
S-007	86 #18 To #10 Awg-600v Max Red Color	100
S-008	88 #10 To #6 Awg-600v Max Blue Color	50



NYLON TIES ASSORTMENT PACK

PART NO.	DESCRIPTION	PACK QUANTITY
S7-711W	7", 11" White Assorted Ties	150
S7-711B	7", 11" Black Assorted Ties	150
S7-5811W	6", 8", 11" White Assorted Ties	450
S7-581B	6", 8", 11" Black Assorted Ties	450



NYLON WIRE TIES

FEATURES:

- Individually bagged



WHITE TIES

PART NO.	DESCRIPTION	STANDARD PACK
SWT04	4" Wire Ties	40
SWT04B	4" Wire Ties	100
SWT05	5" Wire Ties	35
SWT05B	5" Wire Ties	100
SWT07	7" Wire Ties	30
SWT07B	7" Wire Ties	100
SWT11	11" Wire Ties	15
SWT11B	11" Wire Ties	100
SWT15	15" Wire Ties	12
SWT15B	15" Wire Ties	100
SWTA1	4", 7", 11" Wire Ties	30

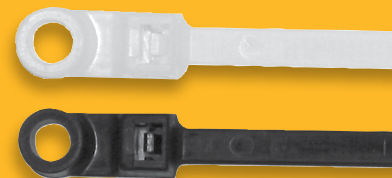
BLACK TIES

PART NO.	DESCRIPTION	STANDARD PACK
SWTB05	5" Wire Ties	35
SWTB05B	5" Wire Ties	100
SWTB07	7" Wire Ties	30
SWTB07B	7" Wire Ties	100
SWTB11	11" Wire Ties	15
SWTB11B	11" Wire Ties	100
SWTB15	15" Wire Ties	12
SWTB15B	15" Wire Ties	100
SWTB1A	4", 7", 11" Wire Ties	28

NYLON WIRE TIES

FEATURES:

- Mounting holes



WHITE TIES

PART NO.	DESCRIPTION	STANDARD PACK
SWTM05	5" Wire Ties	13
SWTM05B	5" Wire Ties	100
SWTM07	7" Wire Ties	11
SWTM07B	7" Wire Ties	100

BLACK TIES

PART NO.	DESCRIPTION	STANDARD PACK
SWTMB05	5" Wire Ties	12
SWTMB05B	5" Wire Ties	100
SWTMB07	7" Wire Ties	10
SWTMB07B	7" Wire Ties	100

