



Symmons®

Tub and Shower Assembly S-96-500-B30-L-V-X

Installation Brief



Need Help?

Contact Symmons customer service at
(800) 796-6667, (781) 848-2250
Email: customerservice@symmons.com
Monday - Friday 8:00 am - 7:30 pm EST

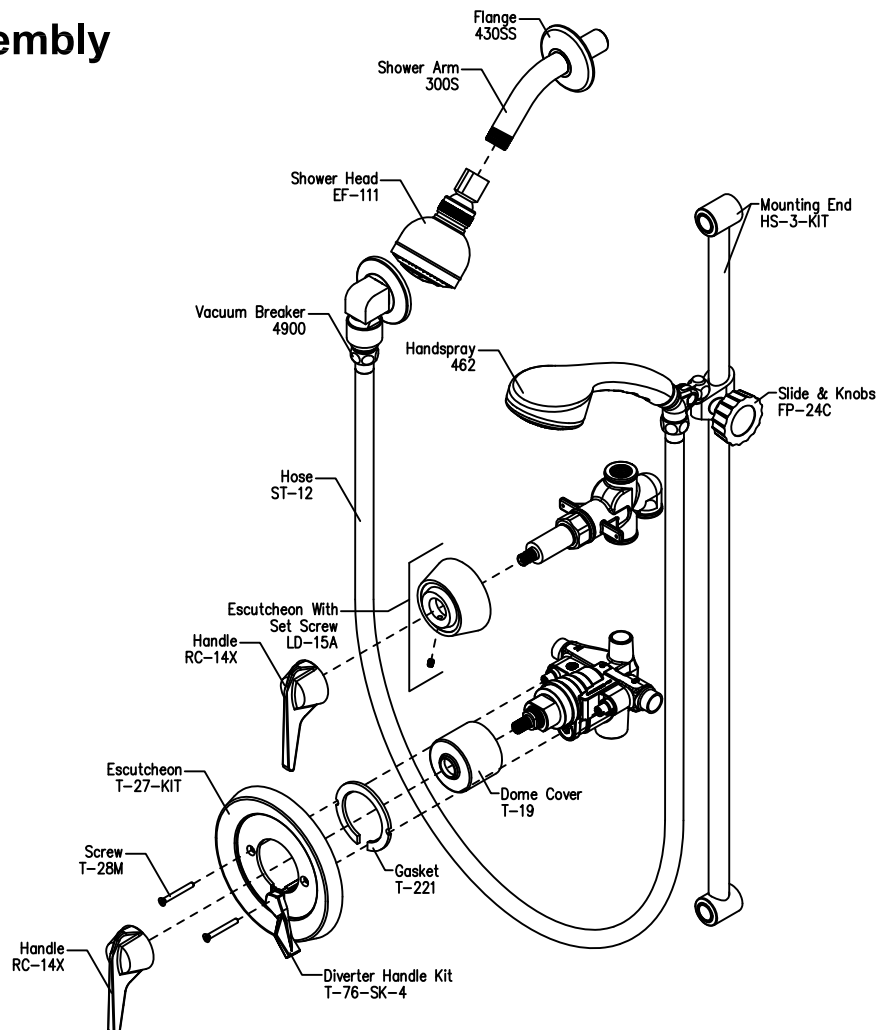


Please check Symmons website for technical help,
the latest product information and warranty policy.
Website: www.symmons.com/service

Product Highlights

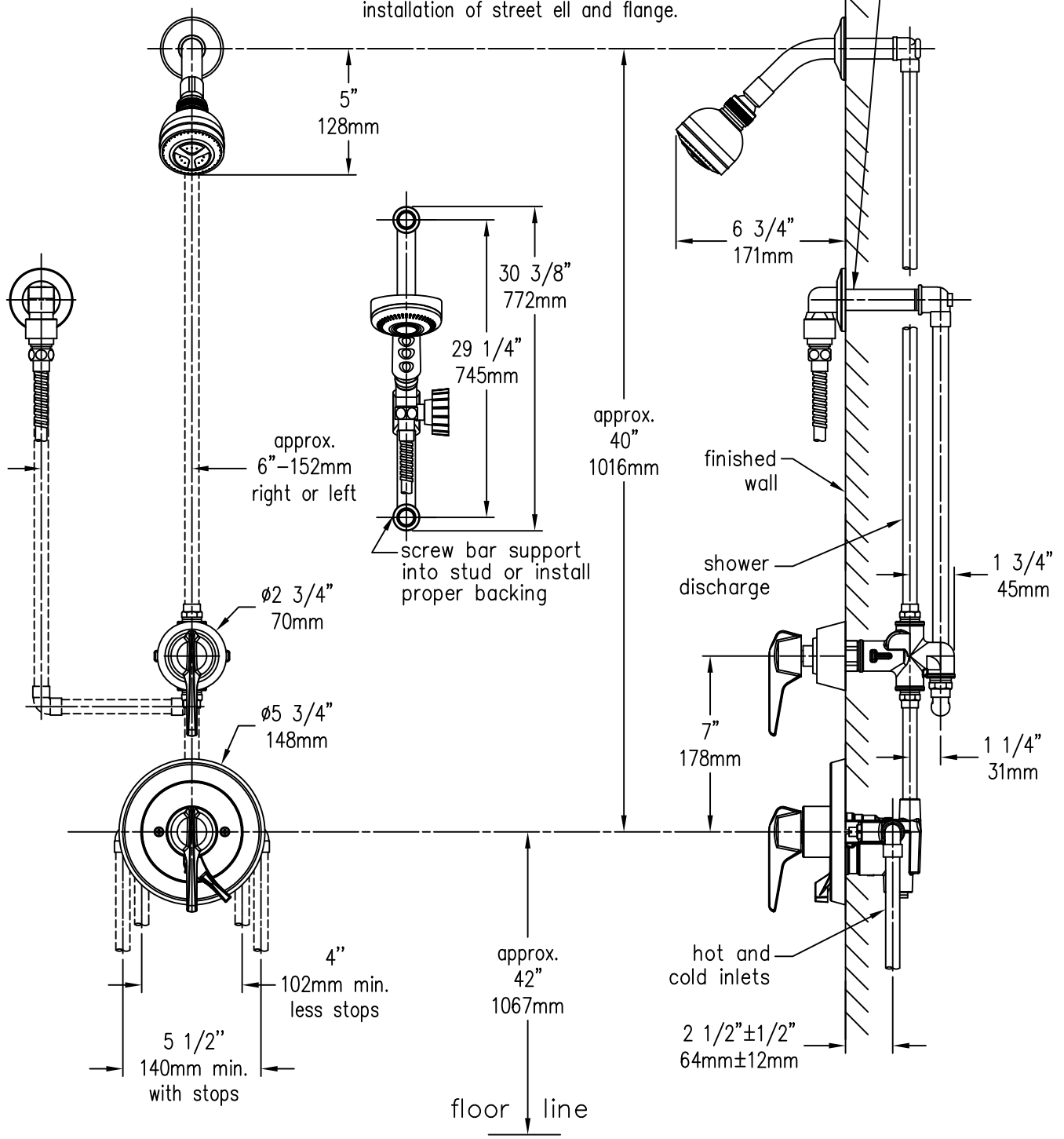
- Pressure balancing mixing valve
- Adjustable stop screw to limit handle turn
- Integral service stops to allow water shut-off at valve for service
- Integral diverter
- Polished chrome finish

Parts Assembly



Dimensions

Male 1/2" I.P.S. thread must be recessed 1/4" (6mm) from finished wall for proper installation of street ell and flange.



Note: Dimensions and product structure are subject to change without notice.

Symmons Industries, Inc. ■ 31 Brooks Drive ■ Braintree, MA 02184
 (800) 796-6667, (781) 848-2250 ■ Fax (800) 961-9621, (781) 843-3849
 Website: www.symmons.com ■ Email: customerservice@symmons.com

Symmons®