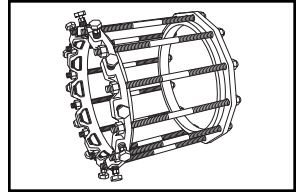


SUBMITTAL INFORMATION

Uni-Flange Retainer (UFR1450-D-x-RB-I style)

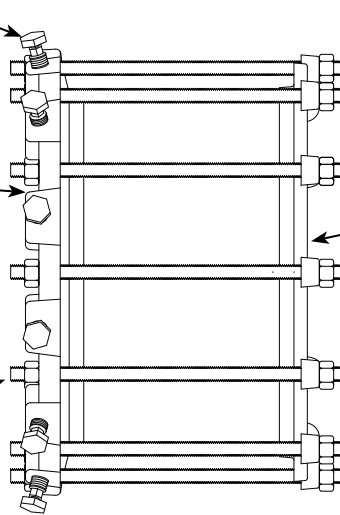


WEDGE ACTION SERIES 1450-D RESTRAINT ASSEMBLY (WITH BLUE FLUOROCARBON-COATED ACCESSORIES) FOR DUCTILE IRON PUSH-ON CONNECTIONS

Auto-Tork Set Screw
Ductile Iron per ASTM A536 Grade 65-45-12
ANSI/AWWA C111/A21.11

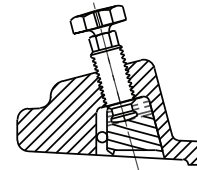
Series 1400
Ductile Iron per ASTM A536 Grade 65-45-12
ANSI/AWWA C111/A21.11

Tie Rod and Nuts
High strength, low alloy steel per ANSI/AWWA C111/A21.11 or high strength steel per ASTM A193, grade B7 (blue fluorocarbon-coated)

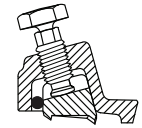


Back-Up Ring
Ductile Iron per ASTM A536 Grade 65-45-12
ANSI/AWWA C111/A21.11 or Carbon Steel per ASTM A36
(Assembled on bell end)

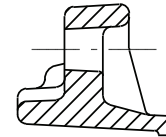
1400 PROFILE



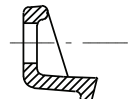
30" - 48"



3" - 24"



30" - 48"



3" - 24"

NOM. PIPE SIZE	PIPE O.D.	RODS No.	ROD LENGTH	ROD DIA.	PRESSURE RATING (PSI)	**MAX BELL DIA.	APPROX. WT. (LBS.)	CATALOG NUMBER	✓ SUBMITTED ITEM(S)
3"	3.96	4	14"	5/8"	350	5.50"	12	UFR1450-D-3-RB-I	
4"	4.80	4	17"	3/4"	350	6.62"	20	UFR1450-D-4-RB-I	
6"	6.90	6	17"	3/4"	350	8.62"	29	UFR1450-D-6-RB-I	
8"	9.05	6	17"	3/4"	350	10.88"	35	UFR1450-D-8-RB-I	
10"	11.10	8	24"	3/4"	350	13.12"	56	UFR1450-D-10-RB-I	
12"	13.20	8	24"	3/4"	350	15.38"	62	UFR1450-D-12-RB-I	
14"	15.30	10	24"	3/4"	350	17.88"	90	UFR1450-D-14-RB-I	
16"	17.40	12	24"	3/4"	350	20.12"	113	UFR1450-D-16-RB-I	
18"	19.50	12	24"	3/4"	250	22.38"	132	UFR1450-D-18-RB-I	
20"	21.60	14	24"	3/4"	250	24.62"	160	UFR1450-D-20-RB-I	
24"	25.80	16	24"	3/4"	250	29.12"	181	UFR1450-D-24-RB-I	
30"	32.00	10	24"	1"	250	35.80"	341	* UFR1450-D-30-RB-I	
36"	38.30	12	24"	1"	250	42.60"	430	* UFR1450-D-36-RB-I	
42"	44.50	28	52"	1-1/4"	250	49.25"	1350	UFR1450-D-42-RB-I	
48"	50.80	32	52"	1-1/4"	250	56.125"	1570	UFR1450-D-48-RB-I	

* Backup ring is painted steel for 30" and 36"

** Connecting rods WILL NOT CLEAR a pipe bell with a maximum diameter larger than the listed measurement.

FEATURES

- Back-up ring: Ductile iron per ASTM A536 grade 65-45-12 or carbon steel per ASTM A36
- Wedge activating screw: Ductile iron per ASTM A536 grade 65-45-12
- Gland: Ductile iron per ASTM A536 grade 65-45-12
- Wedge: Ductile iron per ASTM A536 heat treated to hardness of 370 BHN minimum
- Restraining rods & nuts: High strength, low alloy steel per ANSI/AWWA C111/A21.11 or high strength steel per ASTM A193, grade B7, blue fluorocarbon coated
- Coating: E-coat epoxy
- New installations only

The Ford Meter Box Company considers the information in this submittal form to be correct at the time of publication. Item and option availability, including specifications, are subject to change without notice. Please verify that your product information is current.



The Ford Meter Box Company, Inc.

P.O. Box 443, Wabash, Indiana U.S.A. 46992-0443

Phone: 260-563-3171 / Fax: 800-826-3487

Overseas Fax: 260-563-0167

www.fordmeterbox.com

01/30/18

Submitted By: