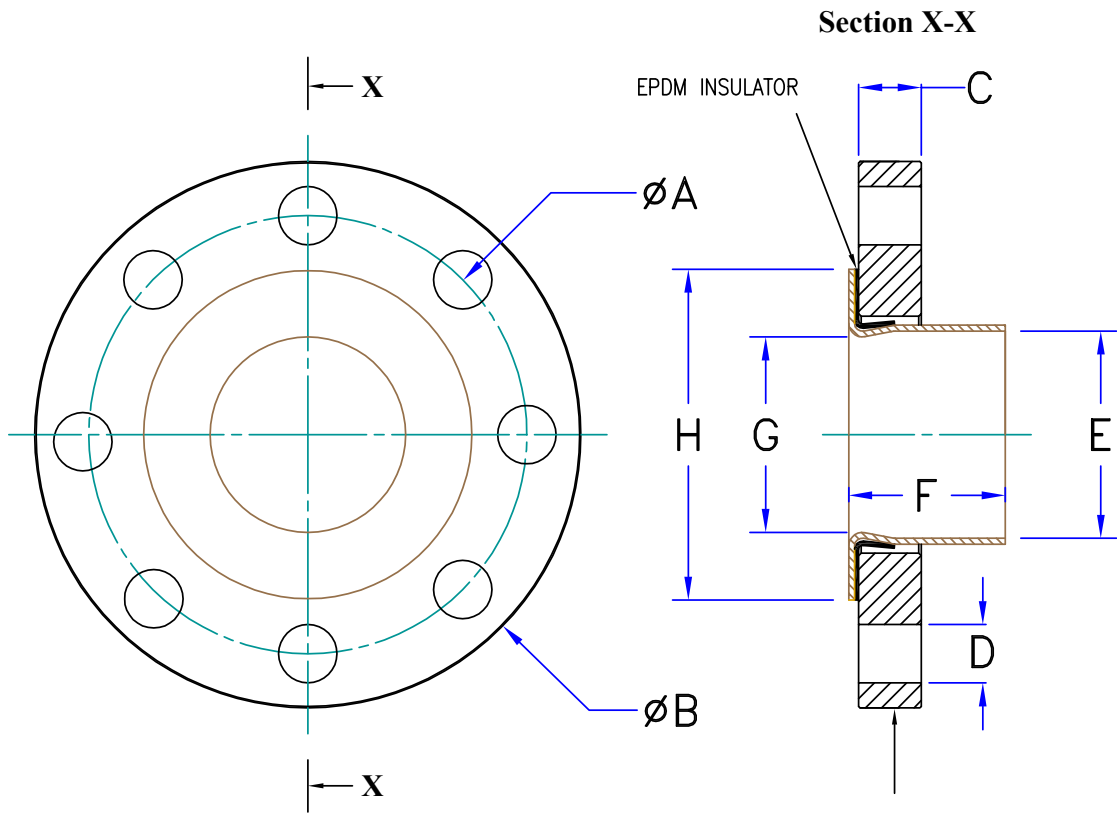


JOB NAME \_\_\_\_\_ CONTRACTOR \_\_\_\_\_  
 LOCATION \_\_\_\_\_ APPROVAL \_\_\_\_\_  
 ENGINEER \_\_\_\_\_ CONT. P.O. NO. \_\_\_\_\_  
 APPROVAL \_\_\_\_\_ REPRESENTATIVE \_\_\_\_\_

### 300lb Copper Flange



EDGE OF FLANGE MARKED WITH  
 CTS (Size) INCH 300LB - ANSI B16.5 (Heat Number\*)  
 EG: CTS 3 INCH 300LB - ANSI B16.5 13J3857  
 (\*If Specified)

	1.5 INCH	2 INCH	2.5 INCH	3 INCH	4 INCH	5 INCH	6 INCH	8 INCH
Code	WBG3015	WBG3020	WBG3025	WBG3030	WBG3040	WBG3050	WBG3060	WBG3080
A. Bolt Circle Diam	4.50	5.00	5.88	6.62	7.88	9.25	10.62	13.0
B. Flange Diameter	6.12	6.50	7.50	8.25	10.0	11.0	12.5	15.0
C. Flange Thickness	0.71	0.79	0.87	0.95	1.06	1.14	1.18	1.38
No. Bolt Holes	4	8	8	8	8	8	12	12
D. Bolt Hole Diam	0.87	0.75	0.87	0.87	0.87	0.87	0.87	1.00
E. Tube End Nom ID	1.63	2.13	2.63	3.13	4.13	5.13	6.13	8.13
F. Cu Piece Length	1.60	1.85	1.95	2.35	2.85	3.85	4.35	5.50
G. Cu Piece Min ID	1.47	1.94	2.42	2.89	3.84	4.70	5.72	7.80
H. Cu Flange OD	3.15	3.70	4.25	5.00	6.22	7.28	8.35	10.6

Spec sheet measurements accurate at time of printing