

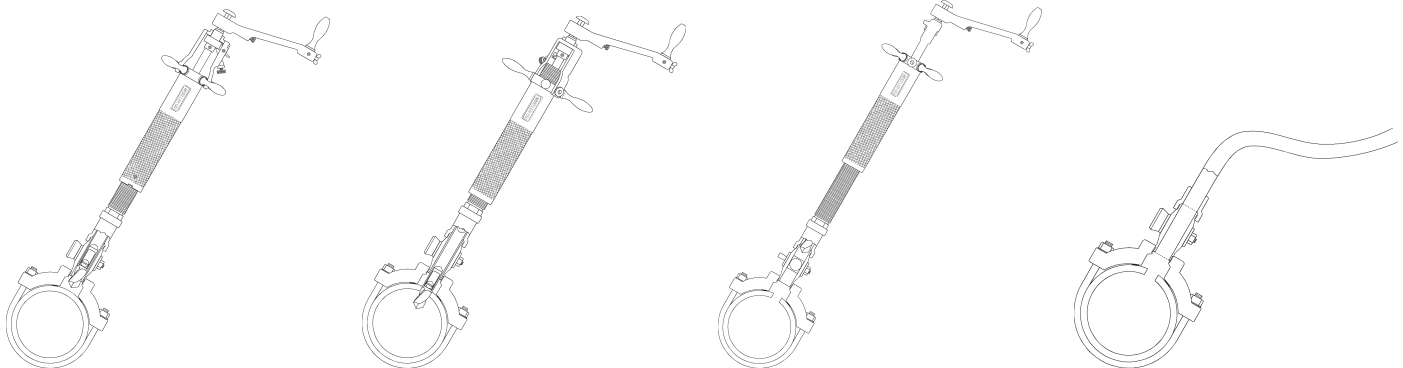
MUELLER Co. manufactures several different small drilling machines for drilling holes from 7/16" to 2" in all types of pipe. Machines are available in hand or power operated models with a selection of drills and shell cutters for the type of pipe you are using. Small drilling machines are primarily used with service clamps and corporation stops to make service connections on mains under pressure. This method of making service connections is especially recommended for use where the main is too small, thin or weak to permit direct tapping. MUELLER® Small Drilling Machines can also be used to drill through any valve or fitting to which they can be attached.

MUELLER Co. has built these machines to take the rough handling such equipment usually receives dur-

ing normal use. They are designed to provide years of service with a minimum of maintenance. Another important advantage of MUELLER machines is the similarity in basic design and operating procedures for each machine. This makes it easier to train personnel in the use of the various drilling machine models.

These machines are part of a complete system of equipment, products and methods developed by MUELLER Co. to perform the variety of operations needed to install, extend and maintain today's water systems. The **designed-in** compatibility of each part of this system helps everything go together efficiently for strong, leak-tight installations.

The MUELLER method of making a main to service connection using the MUELLER E-5™ Small Drilling Machine



- ❑ With the service saddle attached to the main, the corporation stop is threaded into the clamp. The machine is then mounted on the corporation stop using an adapter nipple, and the stop is opened.
- ❑ The main is drilled out under pressure.
- ❑ The boring bar of the machine is retracted and the corporation stop is closed to control the water. The machine is removed.
- ❑ The service line is attached to the outlet of the corporation stop and the stop is opened to activate service.

Small drilling machine selection guide

Machine	Drill or cutter capacity	Maximum pressure	Operation	Type of pipe	Recommended uses
E-5™	7/16" - 1-7/8"	500 psig (3450 kPa)	Hand or power	Cast iron, cement-lined cast iron, ductile iron, cement-lined ductile iron, A-C, concrete, steel, and PVC	Making main to service connections in pressurized mains
D-5™	5/8" - 2"				
Mega-Cut™	7/16" - 1-7/8"	200 psig (1380 kPa)	Hand		
Tru-Cut™	11/16" - 7/8"	200 psig (1380 kPa)	Hand	PVC	
PL-2™	11/16" and 7/8"				

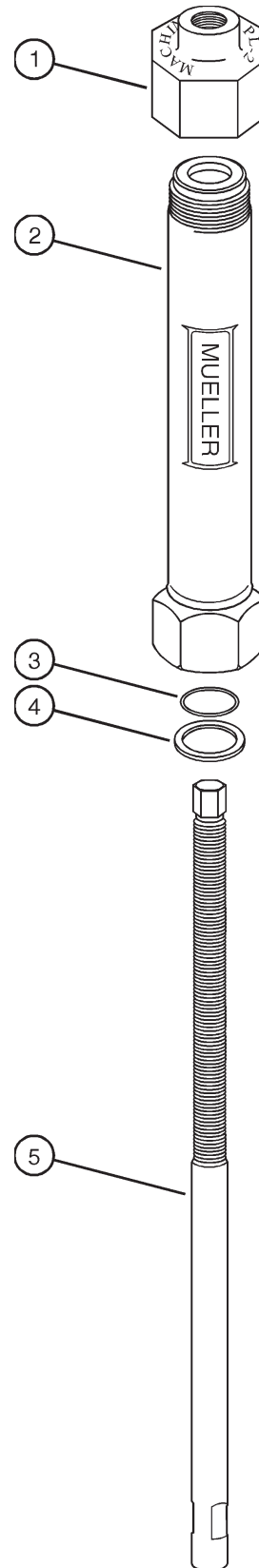
Rev. 8-04 Shaded area indicates change

Repair Kit

Item No.	Part Number	Part Name
	681847	Complete Kit; includes following:
1	507144	Disengagement nut
3	79344	O-ring
4	58733	Body washer
	88366	Cutting Grease

Body Extension

Part Number	Part Name
506363	1-15/16" Long Body Extension



NOTE: These illustrations are for parts identification only. DO NOT use these illustrations for assembly or disassembly of machine. MUELLER CO. offers a machine repair service. Contact MUELLER® Customer Service Center for details.

**TO ORDER SPECIFY QUANTITY, PART NUMBER AND PART NAME
(include catalog number and model number of machine)**

MUELLER PL-2 Drilling Machine tools



Shell cutters for the MUELLER PL-2 Machine are specially designed to direct the pipe chips inside the cutter where they are retained by the pipe coupon. An optional coupon removal tool is available to aid in the quick, safe removal of the coupon from the shell cutter. The use of this removal tool is recommended.

Shell cutters

Size of corporation stop thread	Shell cutter size	Maximum plastic pipe wall thickness	Shell cutter part number*	Optional coupon removal tool part no.
3/4"	11/16"	1.125"	681919	681242
1"	7/8"	1.125"	681920	681242

*Shell cutters furnished with lock washer.

Machine adapter nipples



Drilling machine adapter nipples are used to adapt a drill to the outlet end of a corporation stop. Each adapter fits a specific machine to a specific size and type of corporation stop outlet. Some corporation stop outlets require a gasket to be used between the outlet and adapter. Gaskets are ordered separately from the adapter (see below).

*For type "K" copper service tubing or plastic tubing having the same O.D. (PE or PB).
 **These adapters can be used with corporation stops having a copper flare outlet, CTS O.D. MUELLER 110 Conductive Compression Connection or CTS Pack Joint connection outlet.
 ***For PE plastic pipe meeting specifications ASTM D-2239 (SDR-7) 160 psig.
 ****IPS Polyvinylchloride (PVC) Per ASTM D-1785
 Δ Adapters furnished with gaskets

Type adapter thread-corporation stop outlet thread	Maximum pressure and temperature rating	Plastic pipe maximum wall thickness	Size of corporation stop outlet connection		
			3/4"	1"	1-1/4"
Inside thread-copper flare Connection	200 psig @ 100F	1.125"	507632**	507633**	682032
Inside thread-CTS MUELLER 110® Conductive Compression Connection*		1.125"	507632**	507633**	-
Inside thread-CTS MUELLER Pack Joint Connection*		1.125"	507632**	507633**	-
Inside thread-CTS MUELLER 110® Compression Connection*		1.125"	509050	509051	-
Inside thread-Plastic Pack Joint - Compression connection - PVC****		1.125"	509050	682290	-
Inside Thread-IPS-PE Pack Joint - Compression Connection***		1.125"	509050	682290	-
Inside thread-I.P. thread outlet		1.125"	570630	570631	-

Machine adapter nipple gaskets



Several types of machine adapter nipples require a gasket to seal the adapter to the outlet of the corporation stop. These gaskets are ordered separately from the following chart.

Machine adapter nipple part number	507632	507633	509050	509051
Gasket part number	69549	1" H-15053	1" H-15053	500846

PL-2 Machine optional equipment



- Ratchet handle complete with socket—PART NUMBER: 581536
- 3/8" square drive reversible ratchet handle only—PART NUMBER: 507095
- 7/16"x3/8" square drive socket-fits 7/16" hex on PL-2 Drilling machine boring bar—PART NUMBER: 507096

Note: Mueller recommended cutting grease is available in pints (88366).

Rev. 9-09

MUELLER PL-2 Machine for drilling operations under pressure on plastic pipe---11/16" and 7/8" cutters inclusive.

- Catalog number PL-2 (Part number 39502)
- Hand operation
- 7/16" drive hex
- Designed for use on pressurized or dry mains
- Used to drill through 3/4" and 1" corporation stops and service saddles
- 7" (178 mm) boring bar travel
- Used to cut PVC pipe only
- 200 psig (1379 kPa) maximum working pressure
- 150 F (66 C) maximum temperature rating

NOTE: The working pressure or temperature rating is reduced accordingly if any attachment, valve, or fitting subjected to pressure or temperature during the drilling operation has a maximum working pressure or temperature rating less than that specified above.



Equipment furnished with each PL-2 machine:

- Body gasket #58733
- Operating instructions (Form #10292)

Equipment to be selected:

- Shell cutters—page 2.23
- Drilling machine adapters—page 2.23
- Ratchet handle and socket—2.23

Weight	
Machine only shipping weight	3 lbs. (1.4kg)

Mueller PL-2 Machine Tool Kit - 682295

Description	Part No.
PL-2	39502
3/4" Equipment	
11/16" Shell Cutter for PVC	681919
3/4" Corp Adapter†	507632
1" Equipment	
7/8" Shell Cutter for PVC	681920
1" Corp Adapter†	507633

†Adapter fit Flare, CTS 110, CTS Pack Joint

MUELLER® TRU-CUT™ DRILLING MACHINE REPAIR PARTS AND REPAIR KIT

Mueller Co.

2.21

Shaded area indicates change Rev. 9-09

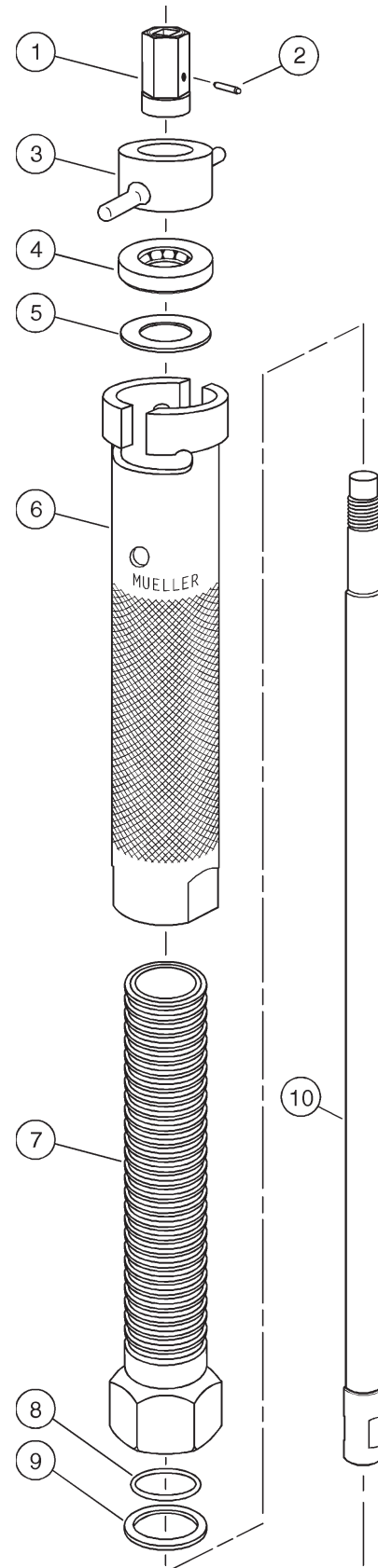
Item No.	Part Number	Part Name
	039431	Machine Complete
1	528716	Drive nut
2	507143	Pin
3	89073	Connector
4	78855	Bearing
5	78856	Collar
6	528725	Feed sleeve
7	528717	Body
8	78858	O-ring
9	58733	Gasket
10	528718	Boring bar

Repair Kit

Item No.	Part Number	Part Name
	682296	Machine Complete
1	528716	Drive nut
2	507143	Pin
3	89073	Connector
5	78856	Collar
6	528725	Feed sleeve
7	528717	Body
8	78858	O-ring
9	58733	Gasket
10	528718	Boring bar
	528571	Thrust bearing
	681919	Shell cutter
	505825	Lock washer
	507632	Machine Adapter

Body Extension

Part Number	Part Name
506363	1-15/16" Ling Body Extension



NOTE: These illustrations are for parts identification only. DO NOT use these illustrations for assembly or disassembly of machine. MUELLER CO. offers a machine repair service. Contact MUELLER® Customer Service Center for details.

**TO ORDER SPECIFY QUANTITY, PART NUMBER AND PART NAME
(include catalog number and model number of machine)**

MUELLER TRU-CUT Drilling Machine tools



Shell cutters for the MUELLER TRU-CUT Machine are specially designed to direct the pipe chips inside the cutter where they are retained by the pipe coupon .

An optional coupon removal tool is available to aid in the quick, safe removal of the coupon from the shell cutter. The use of this removal tool is recommended.

Shell cutters

Size of corporation stop thread	Shell cutter size	Maximum plastic pipe wall thickness	Shell cutter part number*	Optional coupon removal tool part no.
3/4"	11/16"	1.125"	681919	681242
1"	7/8"	1.125"	681920	681242

*Shell cutters furnished with lock washer.

Machine adapter nipples

Drilling machine adapter nipples are used to adapt a drill to the outlet end of a corporation stop. Each adapter fits a specific machine to a specific size and type of corporation stop outlet. Some corporation stop outlets require a gasket to be used between the outlet and adapter. Gaskets are ordered separately from the adapter (see below).



Type adapter thread-corporation stop outlet thread	Maximum pressure and temperature rating	Plastic pipe maximum wall thickness	Size of corporation stop outlet connection		
			3/4"	1"	1-1/4"
Inside thread-copper flare Connection	200 psig @ 100F	1.125"	507632**	507633**	682032
Inside thread-CTS MUELLER 110® Conductive Compression Connection*		1.125"	507632**	507633**	-
Inside thread-CTS MUELLER Pack Joint Connection*		1.125"	507632**	507633**	-
Inside thread-CTS MUELLER 110® Compression Connection*		1.125"	509050	509051	-
Inside thread-Plastic Pack Joint - Compression connection - PVC****		1.125"	509050	682290	-
Inside Thread-IPS-PE Pack Joint - Compression Connection***		1.125"	509050	682290	-
Inside thread-I.P. thread outlet		1.125"	570630	570631	-

*For type "K" copper service tubing or plastic tubing having the same O.D. (PE or PB).

**These adapters can be used with corporation stops having a copper flare outlet, CTS O.D. MUELLER 110 Conductive Compression Connection or CTS Pack Joint connection outlet.

***For PE plastic pipe meeting specifications ASTM D-2239 (SDR-7) 160 psig.

****IPS Polyvinylchloride (PVC) Per ASTM D-1785

Δ Adapters furnished with gaskets

Machine adapter nipple gaskets

Several types of machine adapter nipples require a gasket to seal the adapter to the outlet of the corporation stop. These gaskets are ordered separately from the following chart.



Machine adapter nipple part number	507632	507633	509050	509051
Gasket part number	69549	1" H-15053	1" H-15053	500846



TRU-CUT Machine optional equipment

- 3/8" square drive reversible ratchet handle only—PART NUMBER: 507095

MUELLER® TRU-CUT™ DRILLING MACHINE

Mueller Co.

2.19

Rev. 9-09

MUELLER Tru-Cut Machine for drilling operations under pressure on PVC pipe - 1 1/16" and 7/8" inclusive

- Catalog number TRU-CUT (Part number 39431)
- Hand operation
- Drive nut accepts both a standard 3/8" ratchet and a 3/4" socket/box wrench
- Designed for use on pressurized or dry mains
- Used to drill through 3/4" and 1" corporation stops and service saddles
- 7" (178 mm) boring bar travel
- Two retaining arms on feed sleeve connector retain the boring bar and help prevent line pressure from pushing the boring bar up once the cut is complete
- Used to cut PVC pipe only
- 200 psig (1379 kPa) maximum working pressure
- 150 F (66 C) maximum temperature rating

NOTE: The working pressure or temperature rating is reduced accordingly if any attachment, valve, or fitting subjected to pressure or temperature during the drilling operation has a maximum working pressure or temperature rating less than that specified above.



Equipment furnished with each Tru-Cut machine:

- Body gasket #58733
- Operating instructions (Form #11941)

Equipment to be selected:

- Shell cutters – page 2.20
- Drilling machine adapters – page 2.20
- Accepts both a standard 3/8" ratchet and a 3/4" socket/box wrench

Mueller Tru-Cut Machine Tool Kit - 682296

Description	Part No.
Tru-Cut Machine	39431
3/4" Equipment	
1 1/16" Shell Cutter for PVC	681919
3/4" Corp Adapter†	507632
1" Equipment	
7/8" Shell Cutter for PVC	681920
1" Corp Adapter†	507633

†Adapter fit Flare, CTS 110, CTS Pack Joint

	Tru-Cut
Machine only shipping weight	5 lbs. (2.3kg.)

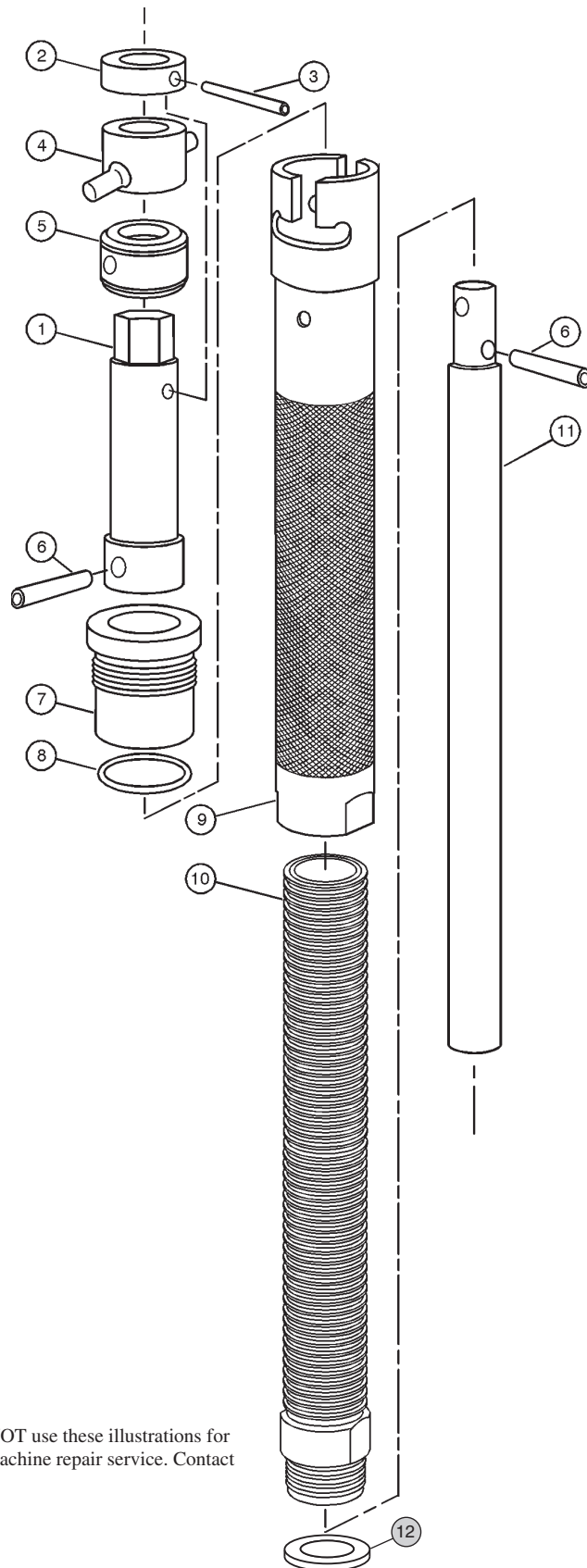
2.18



MUELLER® MEGA-CUT™ DRILLING MACHINE REPAIR PARTS AND REPAIR KIT

Rev. 9-09 Shaded area indicates change

Item No.	Part Number	Part Name
	039432	Machine Complete
1	528094	Handle extension
2	52809	Retaining collar
3	48130	Pin
4	682091	Connector assembly
5	580610	Bearing assembly
6	503158	Pin
7	51432	Packing gland
8	46726	O-ring
9	528095	Feed sleeve
10	503159	Body
11	503161	Boring bar tool end
12	47756	Body gasket



NOTE: These illustrations are for parts identification only. DO NOT use these illustrations for assembly or disassembly of machine. MUELLER CO. offers a machine repair service. Contact MUELLER® Customer Service Center for details.

TO ORDER SPECIFY QUANTITY, PART NUMBER AND PART NAME (include catalog number and model number of machine)

MUELLER® MEGA-CUT™ DRILLING MACHINE

Mueller Co.

2.17

Shaded area indicates change Rev. 9-09

MUELLER MEGA-CUT Drilling Machine adapter nipples

Drilling machine adapter nipples are used to adapt a drilling machine to the outlet of a corporation stop. Each adapter fits a specific machine to a specific size and type of corporation stop outlet. Some corporation stop outlets require a gasket to be used between the outlet and adapter. Gaskets are ordered separately (see below).

Machine end



Inside thread

Outside thread

Type adapter thread - corporation stop outlet thread	Maximum press . & temp. rating	Size of corporation stop outlet connection						
		1/2"	5/8"	3/4"	1"	1-1/4"	1-1/2"	2"
Inside thread-copper flare connection	200 psig @ 100 F	63796	-	52019**	36750**	682256Δ	501947	508201
Inside thread-CTS MUELLER 110® Conductive Compression Connection*		-	-	52019**	36750**	-	501949	508199
Inside thread-CTS MUELLER Pack Joint Connection*		-	-	52019**	36750**	-	501949	508199
Inside thread-PVC Plastic Pack Joint Compression Connection****		-	-	508919	682256Δ	-	682257Δ	682258Δ
Inside thread-IPS PE Pack Joint Compression Connection***		-	-	508919	682256Δ	-	508199	682258Δ
Inside thread-IPS PE MUELLER 110 Compression Connection***		-	-	508919	508920	-	-	-
Inside thread-MUELLER Coupling thread		75493	75494	75495	75496	-	-	-
Inside thread-F.I.P. copper flare connection		-	-	43900	43870	-	-	-
Inside thread-Insulated end (fits union end on valve body) must be used with 502938		-	-	528723	528724	-	-	-
Inside thread-M.I.P. thread outlet	1200 psig @ 100 F	36967	-	36919	36917	36928	501948	508200
Outside thread-F.I.P. thread outlet	1000 psig @ 100 F	36967	-	36920	36918	36733	503435	78907

*For type "K" copper service tubing or plastic tubing having the same O.D.

** These tools can be used with corporation stops having either copper service thread outlet, CTS O.D. MUELLER 110 Conductive Compression Connection or CTS O.D. Pack Joint Connection outlet.

***For PE plastic pipe, meeting specifications ASTM D-2239.

****IPS Polyvinylchloride (PVC) Per ASTM D-1785

Δ Adapters Furnished with Gaskets

Note: PN 502938 Adapters D-5 Machine Adapter to E-5 Machine

Machine adapter nipple gaskets

Several types of machine adapter nipples require a gasket to seal the adapter to the outlet of the corporation stop. These gaskets are ordered separately from the following chart.



Machine adapter nipple part no.	36750	43870	43900	45385	52019	63796
Gasket part no.	1"H-15053	1"H-15053	3/4" - 15053	1-1/4"H-15053	3/4"H15053	1/2"H15053
Machine adapter nipple part no.	501947	501949	508199	508201	508919	508920
Gasket part no.	1-1/2"H15053	507646	507647	2"H-15053	1"H15053	500846



Optional coupon removal tool



Shell cutter



Holder

Shell cutters for PVC pipe

Shell cutter size	Maximum plastic pipe wall thickness	Shell cutter	Shell cutter holder	Shell cutter with holder**	Optional coupon removal tool
1 1/16"	1.125"	681919**	507634	581760	681242
7/8"	1.125"	681920**	507634	581761	681242
1-7/16"	1.125"	528087	508198	-	681243
1-3/4"	1.125"	528088	508198	-	681243

** Shell cutters furnished with lock washer.



Shell Cutter Complete



Boring Bar Adapter



Holder

Shell cutters for cement lined, cast iron , ductile iron, A-C and steel pipe

Shell cutter size	Shell cutter	Arbor	Pilot drill	Set screw	Shell cutter complete	Shell cutter holder
1-7/16"	528157	528156	501641	37802	682287	502900
1-3/4"	528158	528156	501641	37802	682288	502900
1-7/8"	528159	528156	501641	37802	682289	502900

Note: Mueller recommended cutting grease is available in pints (88366).

MUELLER® MEGA-CUT™ DRILLING MACHINE TOOL KIT AND DRILLS

Mueller Co.

2.15

Rev. 9-09

MUELLER MEGA-CUT Drilling Machine

Maximum drill size is specified for each corporation stop in section 5. Smaller drills may be used if desired.

Mueller E-5/Mega-Cut Machine Tool Kit for PVC 682297

Description	Part No.	Description	Part No.	Description	Part No.	Description	Part No.
3/4" PVC Equipment		1" PVC Equipment		1-1/2" PVC Equipment		2" PVC Equipment	
11/16" Shell Cutter	681919	7/8" Shell Cutter	681920	1-7/16" Shell Cutter	528087	1-3/4" Shell cutter complete	528088
Holder for 681919	507634*	Holder for 681920	507634*	Holder for 528087	508198*	Holder for 528088	508198*
3/4" Corp Adapter†	52019	1" Corp Adapter†	36750	1-1/2" Flare Corp Adapter	501947	2" Flare Corp Adapter	508201
				1-1/2" 110 Corp Adapter	501949	2" 110 Corp Adapter	508199

†Adapter fit Flare, CTS 110, CTS Pack Joint *Only 1 of each is provided in kit

Mueller E-5/Mega-Cut Machine Tool Kit for DI 682298

Description	Part No.	Description	Part No.	Description	Part No.	Description	Part No.
3/4" DI Equipment		1" DI Equipment		1-1/2" DI Equipment		2" DI Equipment	
11/16" Drill Bit	36037	7/8" Drill Bit	33253	1-7/16" Shell cutter complete	682287	2" Shell cutter complete	682289
Holder for 36037	61981	Holder for 33253	61993	Holder for 682287	502900*	Holder for 682289	502900*
3/4" Corp Adapter†	52019	1" Corp Adapter†	36750	1-1/2" Flare Corp Adapter	501947	2" Flare Corp Adapter	508201
				1-1/2" 110 Corp Adapter	501949	2" 110 Corp Adapter	508199

†Adapter fit Flare, CTS 110, CTS Pack Joint *Only 1 of each is provided in kit



Combined drill and holder

Drill Size	Drill type and part number					Drill Holder
	Regular† (used on Steel Pipe)	CEM-REW (used on A-C, and Cement Lined Cast or Ductile Iron Pipe)	Tungsten carbide tipped (used on Concrete or A-C Pipe)	Insert	Torx Screw	
7/16"	61879*	79175*	-	-	-	-
9/16"	62011*	-	-	-	-	-
11/16"	37030*	-	-	-	-	-
11/16"	61992	36037	83142**	31270	312722	61981
13/16"	61991	-	-	-	-	61789
7/8"	61990	33253	-	-	-	61993
15/16"	61989	36039	83143**	312711	312723	61993
15/16"	-	-	83147**(**)	312711	312723	-
5/8"	61982	-	83436**	312709	312722	61981
3/4"	61790	36038	-	-	-	61789
1"	61968	36040	-	-	-	61969

† Using regular drills on A/C or cement lined pipe will void the warranty.

*Combined drill and holder.

**These pilot drills have tungsten carbide tips held securely in place with screws. Tips are available as replacement parts.



WARNING: Use on A-C pipe, which contains a known carcinogen, requires appropriate protective equipment and procedures be employed.

Rev. 9-09

MUELLER MEGA-CUT Drilling Machine - for drilling operations under pressure - 7/16" to 1-7/8" inclusive

- Catalog number MEGA-CUT (Part number 39432)
- Hand operation
- Drive nut accepts a standard 7/8" socket wrench
- Designed for use on pressurized or dry mains
- Used to drill through 1/2" to 2" corporation stops and service saddles
- 12-1/8" (308 mm) boring bar travel
- Two retaining arms on feed sleeve safely retain the boring bar and help prevent line pressure from pushing the boring bar up once the cut is complete
- Use on cast iron O.D. PVC pipe, as well as cast iron or ductile iron pipe • cement lined cast iron or ductile iron pipe • A-C pipe • steel pipe • concrete pipe
- 200 psig (1380 kPa) maximum working pressure
- 150F (66C) maximum temperature rating

NOTE: The working pressure or temperature rating is reduced accordingly if any attachment, valve, or fitting subjected to pressure or temperature during the drilling operation has a maximum working pressure or temperature rating less than that specified above.



	Mega-Cut
Total shipping weight	29 lbs. (13 kg)
Machine only weight	19 lbs.(9 kg)

Equipment furnished with each Mega-Cut machine:

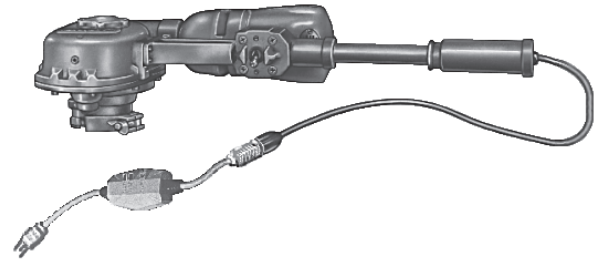
- Wooden storage container #311841
- Body gasket #47756
- Operating instructions (Form #12092)

Equipment to be selected :

- Drills and drill holders—page 2.15
- Shell cutters, cutter holders and pilot drills—page 2.15-2.16
- Drilling machine adapters—page 2.17

H-603 electric power operator

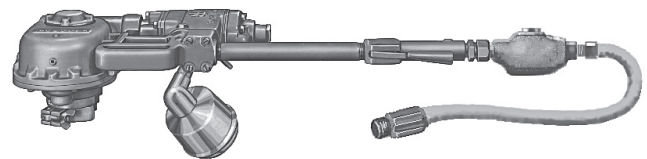
- ❑ **Catalog number H-603**
- ❑ Ground fault interrupter included
- ❑ Mounts directly to B-100/B-101, A-3 and E-5/D-5 machines without special adapters
- ❑ Can be set to automatically advance boring yoke assembly bar while drilling
- ❑ Reversible 35 RPM maximum free speed
- ❑ Reversible 3/4 horsepower electric motor
- ❑ Ground fault interrupter complies with NEC article 305-6(a) and OSHA article 1926.404bii
- ❑ 115 volts A.C. or D.C., 10 amps
- ❑ Power supply required: 1500 watts minimum at 110 - 120 volts A.C. or D.C., 10 amps minimum capacity
- ❑ Total shipping weight 41 lbs. (19 kg)
- ❑ Machine only weight 35 lbs. (16 kg)
- ❑ Shipped in a sturdy wooden storage chest #311793
- ❑ Operating instructions form #11758



H-603 electric power operator

H-604 air power operator

- ❑ **Catalog number H-604**
- ❑ Mounts directly to B-100/B-101, A-3 and E-5/D-5 machines without special adapters
- ❑ Can be set to automatically advance boring bar yoke assembly while drilling
- ❑ Reversible air motor-can withdraw tool under power
- ❑ Constant feed lubricator (shipped loose)
- ❑ 35 RPM maximum free speed
- ❑ Air supply: 55 cubic feet of free air per minute at 90 psig
- ❑ Total shipping weight 42 lbs. (19 kg)
- ❑ Machine only weight 37 lbs. (17 kg)
- ❑ Shipped in a sturdy wooden storage chest #311794
- ❑ Operating instructions form #11758



H-604 air power operator

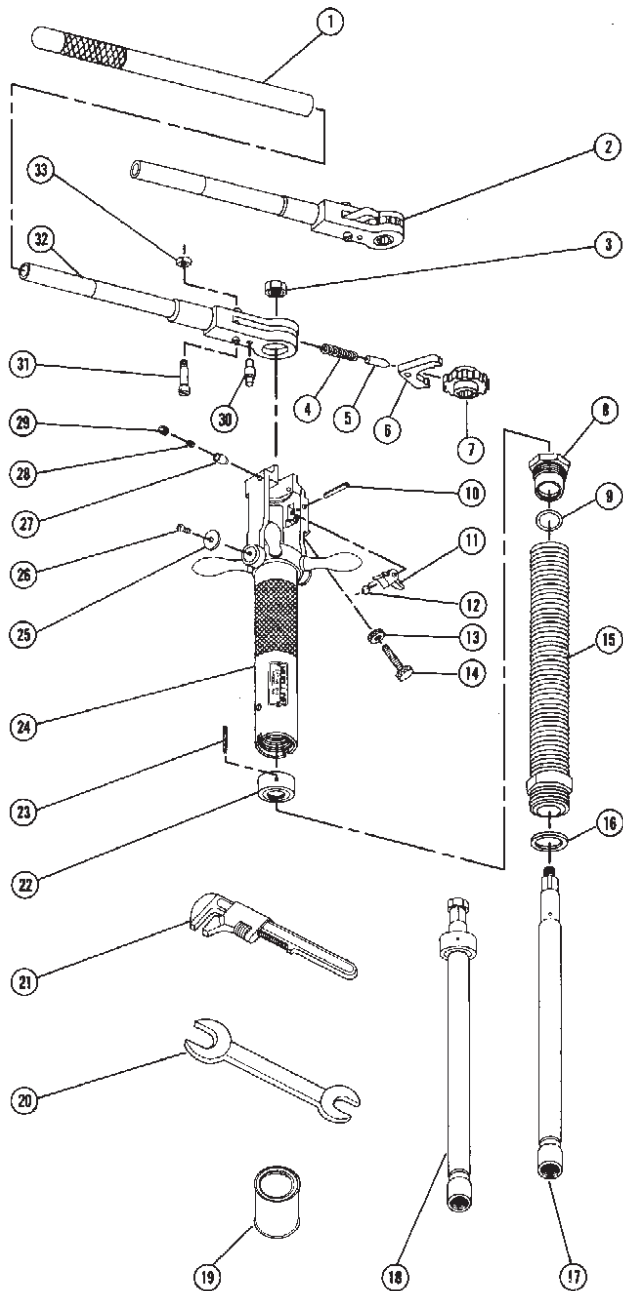
IMPORTANT: MAINTAIN PRESSURE OF 90 PSIG - THE USE OF A GAGE AT THE THROTTLE TO DETERMINE THE ACTUAL PRESSURE OF AIR AT THE POWER OPERATOR IS RECOMMENDED. PROPER USE OF OILER IS REQUIRED TO MAINTAIN OPERATOR WARRANTY.

H-704 hydraulic power operator

- ❑ **Catalog number H-704**
- ❑ Reversible operation.
- ❑ Use with Mueller® D-5, E-5 Drilling Machines, and Mueller® B-101 and A-3 Drilling and Tapping Machines.
- ❑ Removable handle for efficient storage in its sturdy container.
- ❑ Preset safety relief valve prevents over torque conditions.



Item No.	Part Number	Part Name
	039305	Machine Complete
1	86391	Handle extension
2	85308	Ratchet handle
3	46029	Retaining nut
4	40007	Spring
5	40006	Spring pin
6	40004	Ratchet dog
7	40137	Ratchet wheel
8	51377	Packing gland
9	51458	O-ring
10	502027	Rollpin
11	502025	Pivot arm
12	502026	Pivot arm spring
13	502029	Lock nut
14	502028	Operating screw
15	36758	Body
16	33278	Body gasket
17	503141	Boring bar
18	580945	Boring bar complete
19	88366	Cutting grease
20	58196	Wrench
21	91664	Wrench
22	580610	Friction collar
23	48130	Friction collar rollpin
24	580946	Feed tube & yoke complete
25	537126	Washer
26	312443	Retaining screw
27	500851	Detent
28	59810	Detent spring
29	305006	Detent screw
30	40139	Stud
31	40138	Bolt*
32	40177	Handle bar
33	46255	Nut



*Order both parts when replacing either one
(Operating instruction manual form number 9335)

Repair Kit

Item No.	Part Number	Part Name
	681845	Complete Kit; includes following:
09	51458	O-ring
16	33278	Body gasket
19	88366	Cutting grease
22	580610	Friction collar
23	48130	Friction collar pin

Storage chest 580969
(not illustrated)

NOTE: These illustrations are for parts identification only. DO NOT use these illustrations for assembly or disassembly of machine. MUELLER CO. offers a machine repair service. Contact MUELLER® Customer Service Center for details.

**TO ORDER SPECIFY QUANTITY, PART NUMBER AND PART NAME
(include catalog number and model number of machine)**

MUELLER® D-5™ DRILLING MACHINE ADAPTER NIPPLES

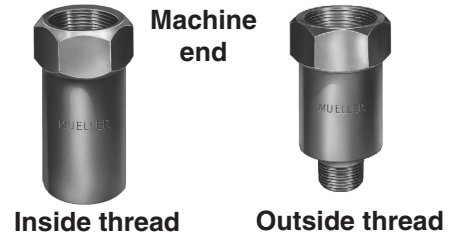
Mueller Co.

2.11

Rev. 9-09

MUELLER D-5 Drilling Machine adapter nipples

Drilling machine adapter nipples are used to adapt a drilling machine to the outlet of a corporation stop. Each adapter fits a specific machine to a specific size and type of corporation stop outlet. Some corporation stop outlets require a gasket to be used between the outlet and adapter. Gaskets are ordered separately (see below).



Type adapter thread - corporation stop outlet thread	Maximum press . & temp. rating	Size of corporation stop outlet connection					
		3/4"	1"	1-1/4"	1-1/2"	2"	2-1/2"
Inside thread-copper flare connection	200 psig @ 100 F	37902**	37903**	682259Δ	37905	37906	-
Inside thread-CTS MUELLER 110® Conductive Compression Connection*		37902**	37903**	-	507644	507645	-
Inside thread-CTS MUELLER Pack Joint Connection*		37902**	37903**	-	507644	507645	-
Inside thread-PVC Plastic Pack Joint Compression Connection****		508917	682259Δ	-	682033Δ	682034	-
Inside thread-IPS PE Pack Joint Compression Connection***		508917	682259Δ	-	507645 Δ	682034	-
Inside thread-IPS PE MUELLER 110 Compression Connection***		508917	508918	-	-	-	-
Inside thread-MUELLER Coupling thread		61165	77375	-	-	-	-
Inside thread-F.I.P. copper flare connection		-	51104	-	-	-	-
Inside thread-Insulated end (fits union end on valve body)		528723	528724	-	-	682649	-
Inside thread-M.I.P. thread outlet	1200 psig @ 100 F	36910	36911	36912	36913	36525	36526
Outside thread-F.I.P. thread outlet	1000 psig @ 100 F	33556	36323	36195	36196	36188	36975

*For type "K" copper service tubing or plastic tubing having the same O.D.

** These tools can be used with corporation stops having either copper service thread outlet, CTS O.D. MUELLER 110 Conductive Compression Connection or CTS

O.D. Pack Joint Connection outlet.

***For PE plastic pipe, meeting specifications ASTM D-2239.

****IPS Polyvinylchloride (PVC) Per ASTM D-1785

NOTE: PN 502938 Adapter, adapts D-5 machine adapters to E-5 machine.

Δ Adapters furnished with gaskets

Machine adapter nipple gaskets

Several types of machine adapter nipples require a gasket to seal the adapter to the outlet of the corporation stop. These gaskets are ordered separately from the following chart.



Machine adapter nipple part no.	37902	37903	37904	37905	37906
Gasket part no.	3/4"H-15053	1"H-15053	1-1/4"H-15053	1-1/2"H-15053	2"H-15053
Machine adapter nipple part no.	51104	507644	507645	508917	508918
Gasket part no.	1"H-15053	507646	507647	1"H-15053	500846

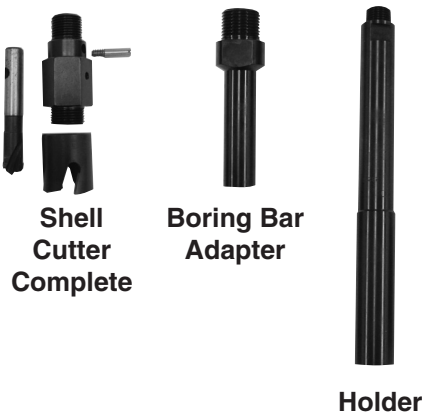
D-5 Boring Bar Extensions	
6" Long	50885
5" Long	64297



Shell cutters for cast iron O.D. PVC plastic pipe – AWWA C-900

Shell cutter size	Plastic pipe wall thickness	Shell cutter	Shell cutter holder	Boring Bar Adapter	Shell Cutter with Holder **	Optional coupon removal tool
1 1/16"	1.125"	681919 **	507634	40438	581760	681242
7/8"	1.125"	681920 **	507634	40438	581761	681242
1-7/16"	1.125"	528087	508198	40438	-	681243
1-3/4"	1.125"	528088	508198	40438	-	681243

** Shell cutters furnished with lock washer.



Shell cutters for cement lined, cast iron , ductile iron, A-C and steel pipe

Shell cutter size	Shell cutter	Arbor	Pilot drill	Set screw	Shell cutter complete	Shell cutter holder
1-7/16"	528157	528156	501641	37802	682287	502900***
1-3/4"	528158	528155	501641	37802	682285	33314
	528158	528156	501641	37802	682288	502900***
1-7/8"	528159	528155	501641	37802	682286	33314
	528159	528156	501641	37802	682289	502900***
2"	79280*	-	37896	33509	80516	33314

*Use 2" 79280 shell cutter on steel pipe only (with wall thickness less than 3/8").

*** Boring bar adapter 40438 must be used with this shell cutter holder.

Note: Mueller recommended cutting grease is available in pints (88366).

MUELLER® D-5™ DRILLING MACHINE TOOL KITS AND DRILLS

Mueller Co.

2.9

Shaded area indicates change Rev. 10-10

MUELLER D-5 Drilling Machine tools

Maximum drill size is specified for each corporation stop in section 5. Smaller drills may be used if desired.

Mueller D-5 Machine tool Kit for DI - 682299

Description	Part No.	Description	Part No.	Description	Part No.	Description	Part No.
3/4" DI Equipment		1" DI Equipment		1-1/2" DI Equipment		2" DI Equipment	
11/16" Drill Bit	36037	7/8" Drill Bit	33253	1-7/16" Shell Cutter Complete	682287	1-7/8" Shell Cutter Complete	682286
Holder for 36037	36998	Holder for 33253	37032	Holder for 682284	33314*	Holder for 682286	33314*
3/4" Corp Adapter†	37902	1" Corp Adapter†	37903	1-1/2" Flare Corp Adapter	37905	2" Flare Corp Adapter	37906
				1-1/2" 110 Corp Adapter	507644	2" 110 Corp Adapter	507645

†Adapter fit Flare, CTS 110, CTS Pack Joint

*Only 1 of each is provided in kit

Mueller D-5 Machine tool Kit for PVC - 682300

Description	Part No.	Description	Part No.	Description	Part No.	Description	Part No.
3/4" PVC Equipment		1" PVC Equipment		1-1/2" PVC Equipment		2" PVC Equipment	
11/16" Shell Cutter	681919	7/8" Shell Cutter	681920	1-7/16" Shell Cutter	528087	1-3/4" Shell Cutter	528088
Holder for 681919	507634*	Holder for 681920	507634*	Holder for 528087	508198*	Holder for 682286	508198*
3/4" Corp Adapter†	37902	Boring Bar Adapter	40438*	Boring Bar Adapter	40438*	Boring Bar Adapter	40438*
Boring Bar Adapter	40438*	1" Corp Adapter†	37903	1-1/2" Flare Corp Adapter	37905	2" Flare Corp Adapter	37906
				1-1/2" 110 Corp Adapter	507644	2" 110 Corp Adapter	507645

†Adapter fit Flare, CTS 110, CTS Pack Joint

*Only 1 of each is provided in kit



Drill

Holder

Adapters E-5 to D-5 Machine

5-1/2" Long	40438
9-3/4" Long	36324

† Using regular drills on A/C or cement lined pipe will void the warranty.

* When using these tools, operate machine by hand only. For power operation use shell cutters listed at the bottom of this page.

**These pilot drills have tungsten carbide tips held securely in place with screws. Tips are available as replacement parts.

Drills

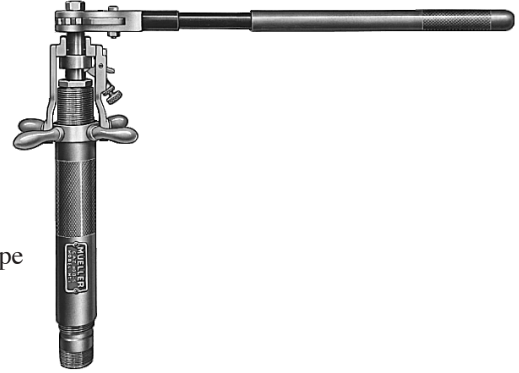
Drill size	Drill type and part number					Drill Holder
	Regular† (used on Steel Pipe)	CEM-RES (used on A-C and Cement Lined Cast or Ductile Iron)	Tungsten carbide tipped (used on Concrete or A-C Pipe)	Insert	Torx Screw	
11/16"	61992	36037	83142**	312710	312722	36998
7/8"	61990	33253	-	-	-	37032
15/16"	61989	36039	83143**	312711	312723	37032
1-1/16"	33530	-	-	-	-	33555
1-1/8"	33531	33254	-	-	-	33555
1-3/16"	33532	74878	83192**	312714	537021	33555
1-5/16"	33534	-	-	-	-	33316
1-3/8"	33535	33274	-	-	-	33316
1-7/16"	33536	36056	83144**	312716	312547	33316
1-5/8"	33538*	-	-	-	-	33314
1-3/4"	33539*	33275*	83145**(**)	312720	312547	33314
1-7/8"	33540*	36069*	83193**(**)	312721	312547	33314
CAUTION: The following drills should not be used to install corporation stops.						
5/8"	61982	-	83436**	312709	312722	36998
3/4"	61790	36038	-	-	-	36915
1"	33529	36229	83163**	312712	537021	33555
1-1/4"	33533	36041	-	-	-	33316
1-1/2"	33537*	33904*	-	-	-	33316
2"	33541*	36407*	-	-	-	33314

WARNING: Use on A-C pipe, which contains a known carcinogen, requires appropriate protective equipment and procedures be employed.

Rev. 9-09

MUELLER D-5 Drilling Machine - for drilling operations under pressure - 5/8" to 2" inclusive

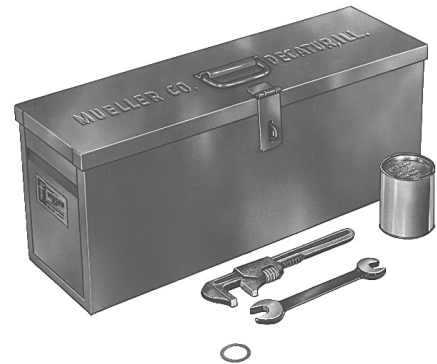
- Catalog number D-5 (Part number 39305)
- Hand or power operation
- Designed for use on pressurized or dry mains
- Used to drill through 3/4" to 2" corporation stops and service saddles
- 14"(356 mm) boring bar travel
- Has boring bar locking mechanism
- Use on cast iron or ductile iron pipe • cement lined cast iron or ductile iron pipe
• A-C pipe • PVC pipe • steel pipe • concrete pipe
- 500 psig (3447 kPa) maximum working pressure at 100 F (38 C)
- 250 F (121 C) maximum working temperature at 375 psig (2586 kPa)



NOTE: The working pressure or temperature rating is reduced accordingly if any attachment, valve, or fitting subjected to pressure or temperature during the drilling operation has a maximum working pressure or temperature rating less than that specified above.

Equipment furnished with each D-5 machine:

- Metal storage case
- Ratchet handle (85308)
- Body gasket (33278)
- Adjustable wrench (91664)
- Two double open end wrenches (58196)
- Cutting grease (88366)
- Instruction manual (Form #9335)



Equipment to be selected:

- Drills and drill holders – page 2.9
- Shell cutters, cutter holders and pilot drills – page 2.10
- Drilling machine adapter nipples – page 2.11
- Power operators – page 2.13

	D-5
Total shipping weight	60.5 lbs. (27 kg)
Machine weight only	35 lbs. (16 kg)

MUELLER® E-5™ DRILLING AND MACHINE REPAIR PARTS AND REPAIR KIT

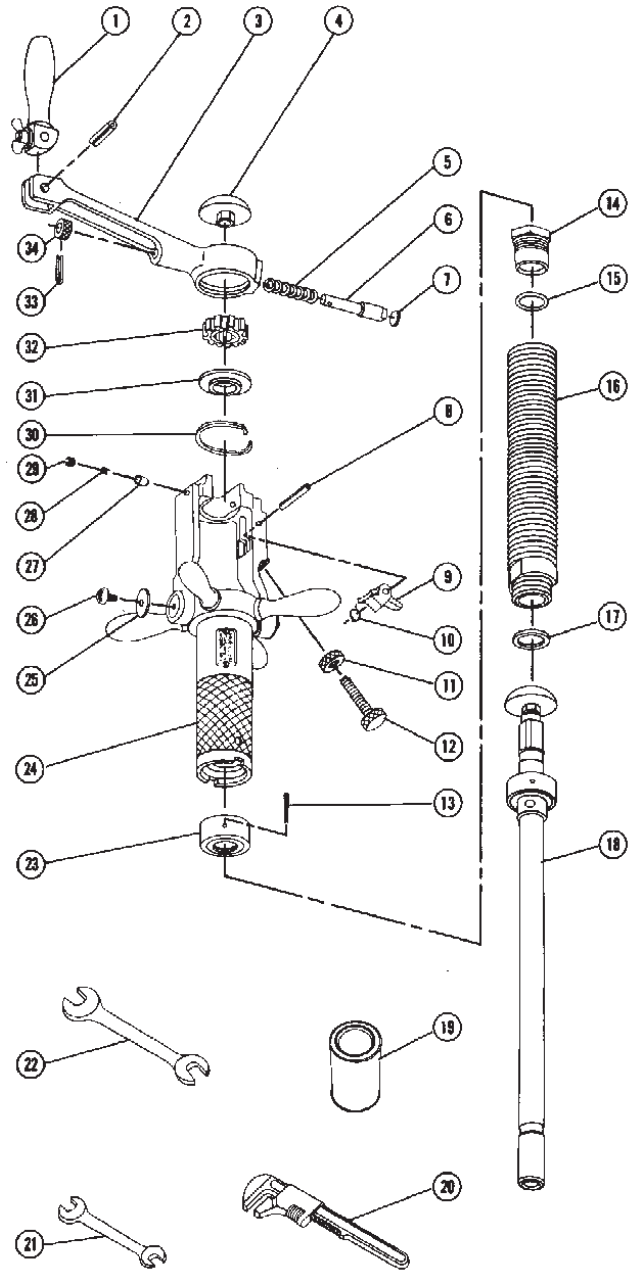
Mueller Co.

2.7

Rev. 8-04

Item No.	Part Number	Part Name
1	80085	Crank handle
2	500635	Handle pin
3	51484	Handle
4	83431	Knob
5	37883	Spring
6	51426	Ratchet dog
7	51427	Plug
8	502027	Pivot arm pin
9	502025	Pivot arm
10	502026	Pivot arm spring
11	502029	Lock nut
12	502028	Operating screw
13	48130	Friction collar pin
14	51432	Packing gland
15	46726	O-ring
16	503159	Body
17	47756	Body gasket
18	580999	Boring bar complete
19	88366	Cutting grease
20	91664	Wrench
21	59787	Wrench
22	96536	Wrench
23	580610	Friction collar
24	580895	Feed tube and yoke
25	50133	Washer
26	79745	Retaining screw
27	500851	Detent pin
28	59810	Spring
29	305006	Screw
30	51428	Retaining ring
31	503163	Wheel bushing
32	503162	Ratchet wheel
33	500803	Operating pin
34	37863	Detent knob

Operating instruction manual form number 9335; page 2.3



Repair Kit

Item No.	Part Number	Part Name
	681846	Complete Kit; includes following:
13	48130	Friction collar pin (1)
15	46726	O-ring (1)
17	47756	Body gasket (1)
19	88366	Cutting grease (1)
23	580610	Friction collar (1)

Storage chest 580971
(not illustrated)

NOTE: These illustrations are for parts identification only. DO NOT use these illustrations for assembly or disassembly of machine. MUELLER CO. offers a machine repair service. Contact MUELLER® Customer Service Center for details.

**TO ORDER SPECIFY QUANTITY, PART NUMBER AND PART NAME
(include catalog number and model number of machine)**

2.6

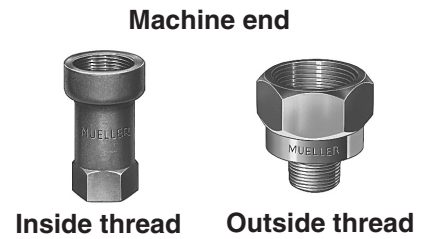


MUELLER® E-5™ DRILLING MACHINE ADAPTER NIPPLES

Rev. 9-09 Shaded area indicates change

MUELLER E-5 Drilling Machine adapter nipples

Drilling machine adapter nipples are used to adapt a drilling machine to the outlet of a corporation stop. Each adapter fits a specific machine to a specific size and type of corporation stop outlet. Some corporation stop outlets require a gasket to be used between the outlet and adapter. Gaskets are ordered separately (see below).



Type adapter thread-corporation stop outlet thread	Maximum press. & temp. rating	Size of corporation stop outlet connection						
		1/2"	5/8"	3/4"	1"	1-1/4"	1-1/2"	2"
Inside thread-copper flare connection	200 psig @ 100 F	63796	-	52019**	36750**	682256Δ	501947	508201
Inside thread-CTS MUELLER 110® Conductive Compression*		-	-	52019**	36750**	-	501949	508199
Inside thread-CTS Mueller Pack Joint Connection*		-	-	52019**	36750**	-	501949	508199
Inside thread-PVC Plastic Pack Joint Compression Connection***		-	-	508919	682256Δ	-	682257Δ	682258Δ
Inside thread-IPS PE Pack Joint Compression Connection***		-	-	508919	682256Δ	-	508199	682258Δ
Inside thread-IPS PE MUELLER 110 Compression Connection***		-	-	508919	508920	-	-	-
Inside thread-MUELLER Coupling thread		75493	75494	75495	75496	-	-	-
Inside thread-IP copper flare connection		-	-	43900	43870	-	-	-
Inside thread-Insulated end (fits union end on valve body) must be used with 502938		-	-	528723	528724	-	-	-
Inside thread-MIP thread outlet	1200 psig @ 100 F	36966	-	36919	36917	36928	501948	508200
Outside thread-FIP thread outlet	1000 psig @ 500 F	36967	-	36920	36918	36733	503435	78907
Inside thread-Insulated Outside thread		-	-	-	682649			502938

*For type "K" copper service tubing or plastic tubing having the same O.D.

** These tools can be used with corporation stops having copper service thread outlet, CTS O.D. MUELLER 110 Conductive Compression Connection or CTS O.D. Pack Joint Connection outlet.

***For PE plastic pipe, meeting specifications ASTM D-2239.

****IPS Polyvinylchloride (PVC) Per ASTM D-1785

Δ Adapters Furnished with Gaskets

NOTE: PN 502938 Adapter, adapts D-5 machine adapters to E-5 machine.

Machine adapter nipple gaskets

Several types of machine adapter nipples require a gasket to seal the adapter to the outlet of the corporation stop. These gaskets are ordered separately from the following chart.



Machine adapter nipple part no.	36750	43870	43900	45385	52019	63796
Gasket part no.	1"H-15053	1"H-15053	3/4"-15053	1-1/4"H-15053	3/4"H15053	1/2"H15053
Machine adapter nipple part no.	501947	501949	508199	508201	508919	508920
Gasket part no.	1-1/2"H15053	507646	507647	2"H-15053	1"H15053	500846

MUELLER® E-5™ DRILLING MACHINE SHELL CUTTERS

Mueller Co.

2.5

Rev. 9-09



Optional coupon removal tool



Shell cutter



Holder

Shell cutters for PVC pipe

Shell cutter size	Maximum plastic pipe wall thickness	Shell cutter	Shell cutter holder	Shell cutter with holder**	Optional coupon removal tool
1 1/16"	1.125"	681919**	507634	581760	681242
7/8"	1.125"	681920**	507634	581761	681242
1-7/16"	1.125"	528087	508198	-	681243
1-3/4"	1.125"	528088	508198	-	681243

** Shell cutters furnished with lock washer.



Shell Cutter Complete



Boring Bar Adapter



Holder

Shell cutters for cement lined, cast iron , ductile iron, A-C and steel pipe

Shell cutter size	Shell cutter	Arbor	Pilot drill	Set screw	Shell cutter complete	Shell cutter holder
1-7/16"	528157	528156	501641	37802	682287	502900
1-3/4"	528158	528156	501641	37802	682288	502900
1-7/8"	528159	528156	501641	37802	682289	502900

Note: Mueller recommended cutting grease is available in pints (88366).



WARNING: Use on A-C pipe, which contains a known carcinogen, requires appropriate protective equipment and procedures be employed.

Rev. 9-09 Shaded area indicates change

MUELLER E-5 Drilling Machine tools

Maximum drill size is specified for each corporation stop in section 5. Smaller drills may be used if desired.

Mueller E-5/Mega-Cut Machine Tool Kit for PVC 682297

Description	Part No.	Description	Part No.	Description	Part No.	Description	Part No.
3/4" PVC Equipment		1" PVC Equipment		1-1/2" PVC Equipment		2" PVC Equipment	
11/16" Shell Cutter	681919	7/8" Shell Cutter	681920	1-7/16" Shell Cutter	528087	1-3/4" Shell cutter complete	528088
Holder for 681919	507634*	Holder for 681920	507634*	Holder for 528087	508198*	Holder for 528088	508198*
3/4" Corp Adapter†	52019	1" Corp Adapter†	36750	1-1/2" Flare Corp Adapter	501947	2" Flare Corp Adapter	508201
				1-1/2" 110 Corp Adapter	501949	2" 110 Corp Adapter	508199

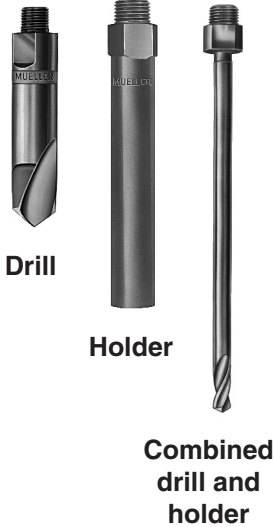
†Adapter fit Flare, CTS 110, CTS Pack Joint *Only 1 of each is provided in kit

Mueller E-5/Mega-Cut Machine Tool Kit for DI 682298

Description	Part No.	Description	Part No.	Description	Part No.	Description	Part No.
3/4" DI Equipment		1" DI Equipment		1-1/2" DI Equipment		2" DI Equipment	
11/16" Drill Bit	36037	7/8" Drill Bit	33253	1-7/16" Shell cutter complete	682287	2" Shell cutter complete	682289
Holder for 36037	61981	Holder for 33253	61993	Holder for 682287	502900*	Holder for 682289	502900*
3/4" Corp Adapter†	52019	1" Corp Adapter†	36750	1-1/2" Flare Corp Adapter	501947	2" Flare Corp Adapter	508201
				1-1/2" 110 Corp Adapter	501949	2" 110 Corp Adapter	508199

†Adapter fit Flare, CTS 110, CTS Pack Joint *Only 1 of each is provided in kit

Drills



Drill Size	Drill type and part number					Drill Holder
	Regular† (used on Steel Pipe)	CEM-REW (used on A-C, and Cement Lined Cast or Ductile Iron Pipe)	Tungsten carbide tipped (used on Concrete or A-C Pipe)	Insert	Torx Screw	
7/16"	61879*	79175*	-	-	-	-
9/16"	62011*	-	-	-	-	-
11/16"	37030*	-	-	-	-	-
11/16"	61992	36037	83142**	31270	312722	61981
13/16"	61991	-	-	-	-	61789
7/8"	61990	33253	-	-	-	61993
15/16"	61989	36039	83143**	312711	312723	61993
15/16"	-	-	83147**(**)	312711	312723	-
CAUTION: The following drills should not be used install corporation stops.						
1/2"	61788*	68315*	-	-	-	-
5/8"	49955*	-	-	-	-	-
5/8"	61982	-	83436**	312709	312722	61981
3/4"	61790	36038	-	-	-	61789
1"	61968	36040	-	-	-	61969

† Using regular drills on A/C or cement lined pipe will void the warranty.

*Combined drill and holder.

**These pilot drills have tungsten carbide tips held securely in place with screws. Tips are available as replacement parts.

Adapters E-5 Drills to D-5 Machine	
5-1/2" Long	40438
9-3/4" Long	36324

Note: Mueller recommended cutting grease is available in pints (88366).

WARNING: Use on A-C pipe, which contains a known carcinogen, requires appropriate protective equipment and procedures be employed.

MUELLER E-5 Drilling Machine - for drilling operations under pressure - 7/16" to 1-7/8" inclusive

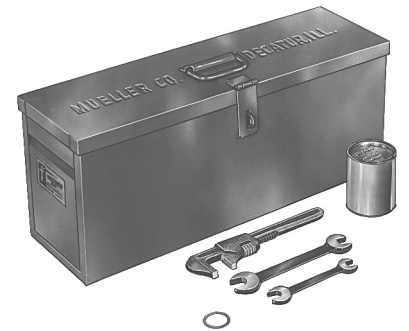
- Catalog number E-5 (Part number 39330)
- Hand or power operation
- Designed for use on pressurized or dry mains
- Used to drill through 1/2" to 2" corporation stops and service saddles
- 12-1/8" (308 mm) boring bar travel
- Has boring bar locking mechanism
- Use on cast iron or ductile iron pipe • cement lined cast iron or ductile iron pipe
• A-C pipe • cast iron O.D. PVC pipe • steel pipe • concrete pipe
- 500 psig (3447 kPa) maximum working pressure at 100 F (38 C)
- 250 F (121 C) maximum working temperature at 375 psig (2586 kPa)

NOTE: The working pressure or temperature rating is reduced accordingly if any attachment, valve, or fitting subjected to pressure or temperature during the drilling operation has a maximum working pressure or temperature rating less than that specified above.



Equipment furnished with each E-5 machine:

- Metal storage case
- Reversible ratchet handle
- Body gasket
- Adjustable wrench
- Two double open end wrenches
- Cutting grease
- Instruction manual (Form #9335)



Equipment to be selected :

- Drills and drill holders – page 2.4
- Shell cutters, cutter holders and pilot drills – page 2.5
- Drilling machine adapters – page 2.6
- Power operators – page 2.13

	E-5
Total shipping weight	59.5 lbs. (27kg)
Machine only weight	25 lbs. (11kg)



WARNING: Use on A-C pipe, which contains a known carcinogen, requires appropriate protective equipment and procedures be employed.

Rev. 4-01

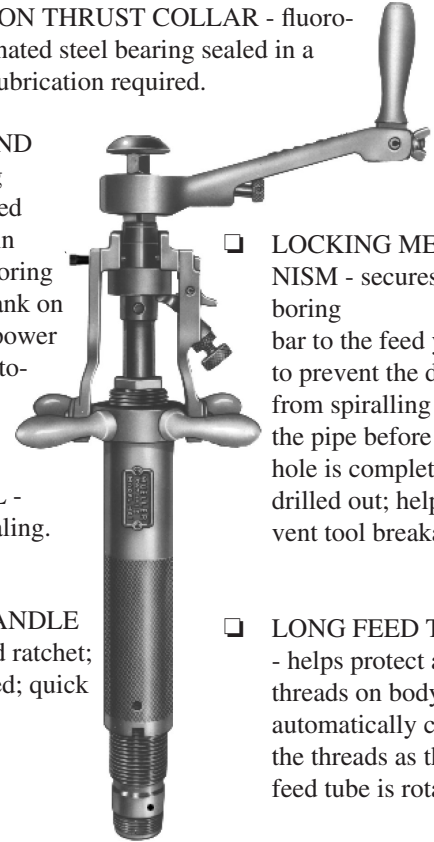
MUELLER® Mega-Cut™ Machine features

- ❑ INDEPENDENT TOOL FEED & CUTTING SPEED manual feed yoke allows independent control for smooth cutting.
- ❑ FEED SLEEVE CONNECTOR - permits the boring bar to be positioned in either its forward or rearmost position quickly and easily.
- ❑ O-RING SEAL - for positive sealing.
- ❑ COMPACT DESIGN - robust yet lightweight for easy use.
- ❑ 2" CAPACITY— makes cuts through corporation valves up to 2".
- ❑ STANDARD SIZE DRIVE NUT - use any 7/8" socket wrench.
- ❑ ANTI-FRICTION THRUST COLLAR fluorocarbon impregnated steel bearing sealed in a steel case; no lubrication required.
- ❑ E-5™ TOOL COMPATIBILITY for use on PVC as well as ductile iron, cast iron, steel, & A/C pipe materials.
- ❑ LONG FEED SLEEVE - helps protect acme threads on body and automatically cleans the threads as the feed sleeve is rotated.



MUELLER® E-5™ and D-5™ Machine features

- ❑ ANTI-FRICTION THRUST COLLAR - fluorocarbon impregnated steel bearing sealed in a steel case; no lubrication required.
- ❑ FEED NUT AND YOKE - spring detents hold feed yoke securely in place around boring bar. Square shank on feed yoke fits power operator for automatic feed.
- ❑ O-RING SEAL - for positive sealing.
- ❑ RATCHET HANDLE - fully enclosed ratchet; easily lubricated; quick reverse button.
- ❑ LOCKING MECHANISM - secures the boring bar to the feed yoke to prevent the drill from spiralling into the pipe before the hole is completely drilled out; helps prevent tool breakage.
- ❑ LONG FEED TUBE - helps protect acme threads on body and automatically cleans the threads as the feed tube is rotated.



MUELLER® Tru-Cut™ Machine features

- ❑ INDEPENDENT TOOL FEED & CUTTING SPEED manual feed yoke allows independent control for smooth cutting.
- ❑ FEED SLEEVE CONNECTOR permits the boring bar to be positioned in either its forward or rearmost position quickly and easily.
- ❑ O-RING SEAL - for positive sealing.
- ❑ WRENCH FLATS aid in attachment and removal of shell cutters.
- ❑ ANTI-FRICTION THRUST COLLAR fluorocarbon impregnated steel bearing sealed in a steel case; no lubrication required.
- ❑ LONG FEED SLEEVE helps protect acme threads on body and automatically cleans the threads as the feed sleeve is rotated.
- ❑ COMPACT DESIGN robust yet lightweight for easy use.
- ❑ PL-2 Compatibility.



MUELLER® PL-2™ Machine features

- ❑ CONTROLLED FEED - threaded boring bar provides positive controlled feed.
- ❑ O-RING SEAL - for positive sealing.
- ❑ DISENGAGEMENT NUT - permits the boring bar to be positioned in either its forward or rearmost position quickly and easily.
- ❑ TRU-CUT - tool Compatibility.
- ❑ BORING BAR DRIVE HEX - permits operation with a standard 3/8" drive ratchet handle and 7/16" socket.
- ❑ WRENCH FLATS - aid in attachment and removal of shell cutters.
- ❑ ECONOMICAL - compact, lightweight design makes this an ideal machine for contractors.



NOTE: Machines not shown to size.