



## Fernco QwikSeal

Part Number	Pipe Inlet	Host Pipe Size Application
QS-4	4" SDR	8" diameter and larger pipe
QS-4S40	4" SCH-40	8" diameter and larger pipe
QS-6	6" SDR-35	10" diameter and larger pipe
QS-6S40	6" SCH-40	10" diameter and larger pipe
QS-8	8" SDR-35	15" diameter and larger pipe



Corrugated



Concrete



Clay



SDR-35

### NOTE Corrugated Applications

- QS-4 and QS-4S40: 8" to 24" pipe diameter
- QS-6 and QS-6S40: 10" to 24" pipe diameter
- QS-8: 15" to 24" pipe diameter

## Fernco Hole Saws

Part Number	Description
QS-5x4HS	5" OD x 4" Deep Hole Saw with Arbor
QS-7x4HS	7" OD x 4" Deep Hole Saw with Arbor
QS-9x4HS	9" OD x 4" Deep Hole Saw with Arbor
QS-SAW5S	5" OD x 4" Deep Hole Saw
QS-SAW7S	7" OD x 4" Deep Hole Saw
QS-SAW9S	9" OD x 4" Deep Hole Saw
QS-ARBOR-S	3/8" x 6" Drill with 1/2" Arbor
QS-ADAPTER	1 1/4" x 3/4" Coring Machine Adapter



## Fernco Coring Bits

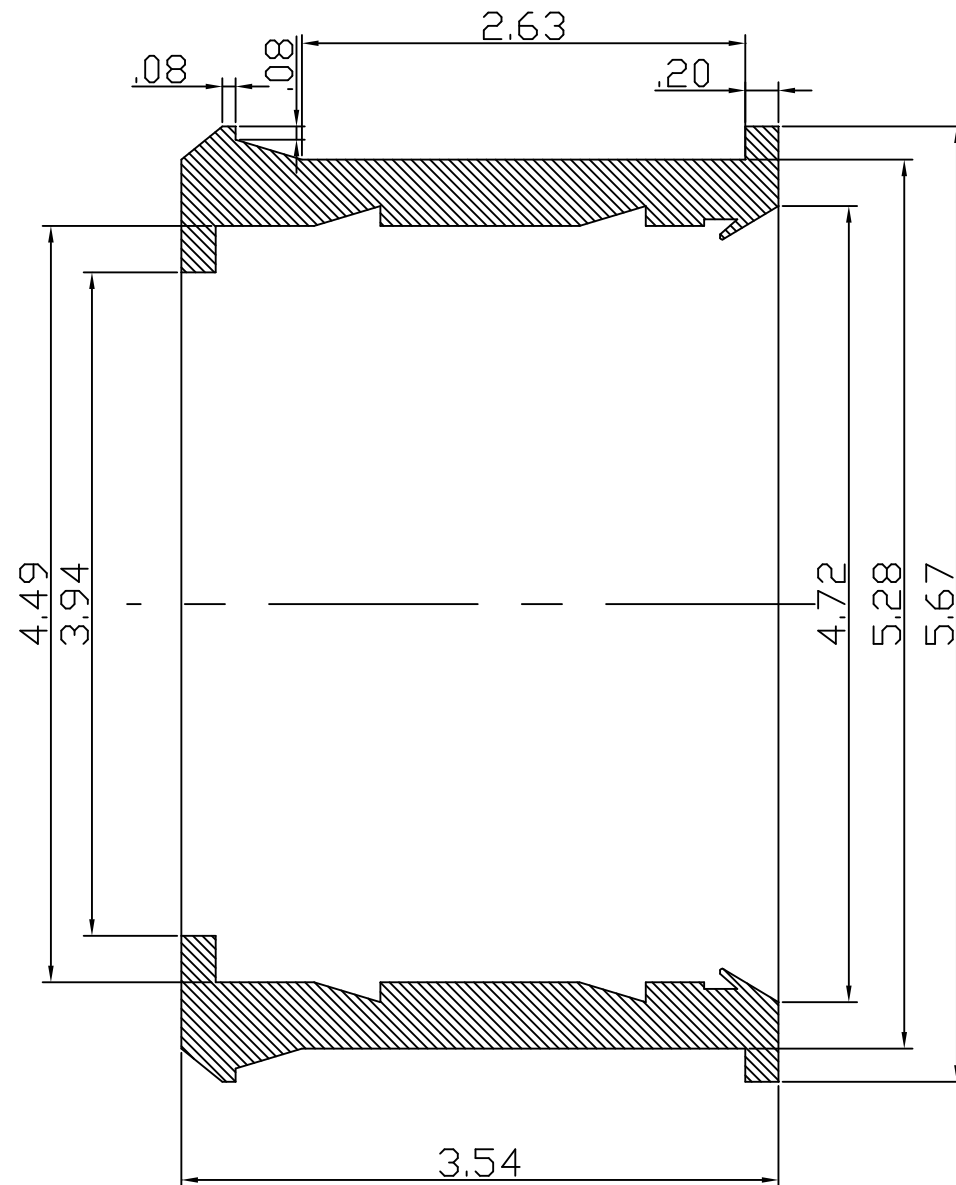
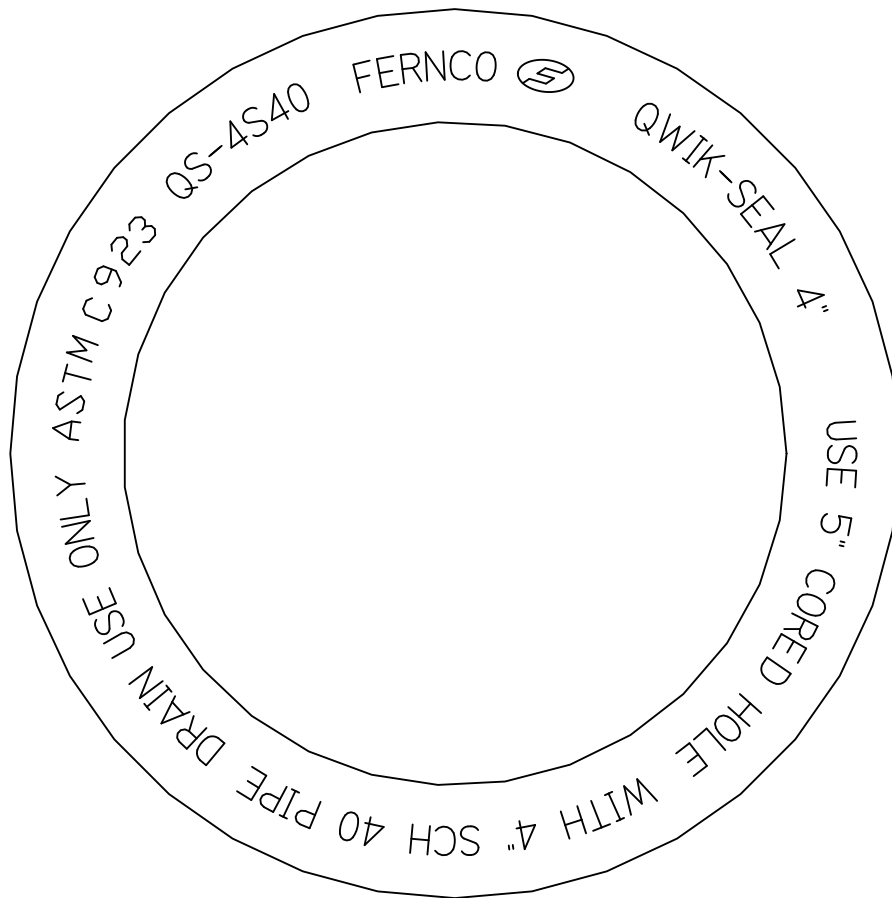
Part Number	Description
QS-5x14CB	5" OD x 14" Length Abrasive Coring Bit
QS-7x14CB	7" OD x 14" Length Abrasive Coring Bit
QS-9x14CB	9" OD x 14" Length Abrasive Coring Bit

## Technical Data

- Meets ASTM C 923
- When tested in concrete manholes
  - Creates water-tight, compression seal up to 10 PSI
  - Withstands up to 7° of deflection
- Easy color identification - gray Sch 40 - green SDR-26 & 35
- Independent of host pipe size, type or material
- Reduced complexity, many solutions with one QwikSeal
- Less inventory and more turns

Connect service pipe to solid wall, profile, closed profile and corrugated pipe with QwikSeal

REVISIONS				
ZONE	REV	DESCRIPTION	DATE	APPROVED



1. GASKET MATERIAL: GREY VIRGIN RUBBER, 50 DURO SHORE A CONFORMING TO ASTM C 923
2. CLAMP: 1 PIECE 550-316HT
3. LABEL: 1 PIECE, TAG QS-4S40

UNLESS OTHERWISE SPECIFIED:  
 DIMENSIONS ARE IN INCHES  
 TOLERANCES

DECIMALS	ANGULAR
.XX ± .06	± 0.5°
.XXX ± .03	
DO NOT SCALE DRAWING	
DRAWN	DATE
AJD	08Aug07
CHECKED	
	NTS

<b>FERNCO</b>			
4" QwikSeal SCH 40			
SIZE	FSCM NO.	DWG NO.	REV
A		QS-4S40	