

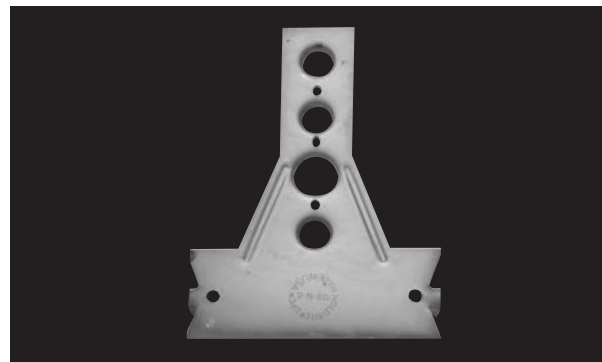
PFCSB6

Stub-out Mounting Bracket



Product Features

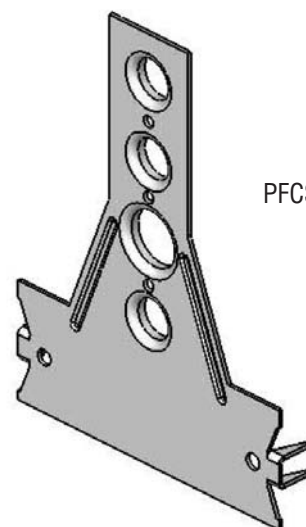
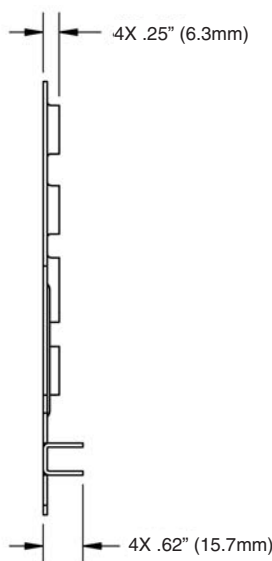
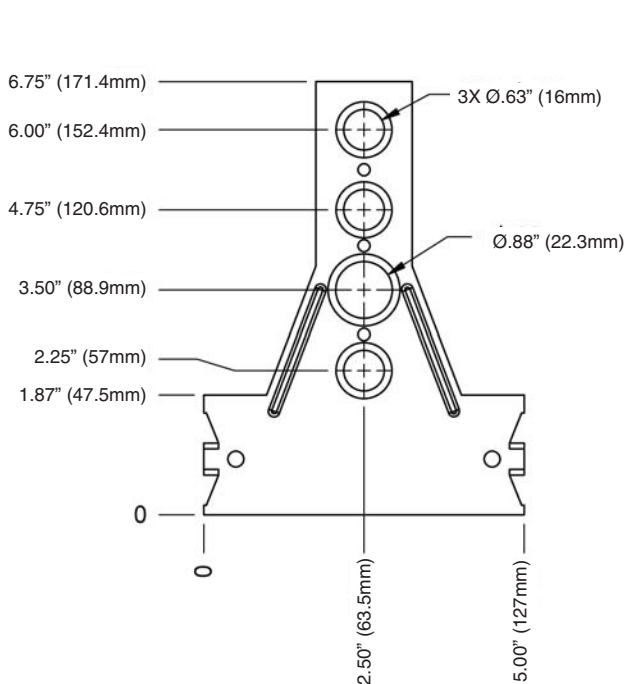
- 16 gauge copper bonded steel
- Positions 1/2" (12.7mm) or 3/4" (17.7mm) copper tube
- Mounts 1/2" (12.7mm) stub-outs exactly 6" (152.4mm) from the floor
- Additional 5/8" (17.4mm) holes at 2 1/4" (54.3mm) and 4 3/4" (119mm)
- Single 7/8" (19.8mm) hole at 3 1/2" (88.9mm) for hose bib, etc.
- Bracket also functions as a nail plate



PFCSB6

No.	Description	Box Qty.
PFCSB6	Stub-out mounting bracket	50

Product Specifications



PFCSB6

